





36RD - Hazelnut with Washed Maple

THE DIESEL ALL OTHERS FALL IN LINE BEHIND.

Every fleet has a flagship. A ship that's the standard-bearer for tradition and ongoing excellence. Winnebago's is the 2005 Vectra.

You'll find that excellence in the Evolution™ Chassis, a Winnebago Industries exclusive. Our engineers worked closely with Freightliner® to create a chassis with one-piece formed steel chassis rails, which provide increased mid-section storage, better weight distribution and improved floorplan flexibility. This chassis is fitted with a 350-hp Caterpillar® C7 turbo-charged, after-cooled 7.2L electronic diesel engine. An Allison® 3000 MH six-speed electronic transmission and advanced suspension systems offer ultra-smooth driving and handling. Available on the 40-foot models is a 400-hp Cummins® ISL turbo-charged, after-cooled 8.9L electronic diesel engine.

Put yourself in the captain's seat. Take the 2005 Vectra for a test-drive today.



KICK BACK IN STYLE.

The 2005 Vectra is a picture of comfort. Smart Space™, our innovative design philosophy, makes the most of interior living areas by maximizing functionality and focusing on user-friendly features. Sink into the premium Stitchcraft furniture, with available leather upgrades. Or relax in the hoop-base lounge chair next to the wainscoting with chair rail. A Euro Chair from Flexsteel® is standard on the 36RD (available on 36GD, 40FD and 40AD). The new legless dining table allows plenty of legroom and can comfortably accommodate four. An elegant, residential-style buffet (40AD only) includes ample storage.

Five floorplans, including three triple flat-floor slideouts and two spacious quad slideouts, offer an amazing amount of storage, both inside and out. Comfort-enhancing amenities include solid-surface countertops, ceramic tile floorcovering, plus your choice of four types of wood and three different interiors. The available Stainless Steel Package includes stainless steel appliances, brushed nickel lighting fixtures, and decorative bath and cabinet hardware throughout the coach. Superior interior climate comfort is maintained with floor-ducted, forced-air heating and ceiling-ducted TrueAir® residential central air conditioning. A standard heat pump provides warmth on cool mornings without running the furnace.

Solid wood cabinet faces, doors and drawers feature a catalyzed protective topcoat process that provides a durable, luxurious satin finish. Flush-mounted, dual-glazed windows and available window awnings offer increased thermal efficiency, while standard day/night pleated shades in the lounge, dinette and bedroom offer variable levels of light and privacy.



40KD - Terrace View Taupe with Washed Maple



SPEND MORE TIME IN THE SHOWER.

Upscale bath features include a skylight, residential-height porcelain toilet, Corian® solid-surface countertops with backsplash, molded sink, one-piece fiberglass shower, textured glass shower door and a ceramic tile floor. The single-control shower faucet has a shut-off valve and a Moen® Posi-Temp® feature for consistent water temperature, even when water pressure suddenly changes. A variable-speed water pump provides consistent pressure without surging. The 10-gallon water heater can operate on 120-volt AC or LP gas. For added convenience, choose an available shower package upgrade with a hand-held shower head and a fold-down seat (fold-down seat not available on 40KD).

A BEDROOM THAT OFFERS MORE.

The standard rear slideouts create a spacious bedroom. Sleep tight and adjust the mattress firmness to your ideal level of support with the available queen-size Sleep Number® Bed by Select Comfort.® A king-size Sleep Number is available on the 40KD only. Or, stay up and watch the 20" Sony® flat-screen TV. It comes with remote extenders and is mounted in the corner for optimum viewing. The 36RD comes with the 20" Sharp® LCD flat-screen TV. A rear stereo system is also available.





A CHEF'S TOUCH.

The galley features Corian solid-surface sink covers, countertops and range cover; a large Swanstone™ double sink; beautifully crafted cabinet frames and doors; a galley island (not available on 36GD or 40KD); ceramic tile floorcovering; recessed fluorescent lighting; and a separate faucet for the Everpure® water filtration system.

A) A double-door refrigerator with icemaker and a pullout pantry cabinet are standard. A larger, four-door refrigerator is available. The standard 2,000-watt inverter/charger lets you make ice while you drive.

B) Choose the available under-counter dishwasher on the 40KD or a drawer style (shown here) on the 36RD, 40AD and 40FD.

C) The 30" residential microwave convection oven with vented range fan is standard, or choose the available G.E. Advantium™ Speedcook microwave shown here in stainless steel. A Stainless Steel Package is available on all models. It includes stainless steel door panels on the refrigerator, range, and microwave; brushed nickel lighting fixtures; and decorative bath and cabinet hardware throughout.

A



B



C



A



B



C



D



E



F



G



H



THE COMFORTS OF HOME.

A) You're ready for the big game or your favorite movie with this hardwood entertainment center that features a 27" Sony flat-screen TV on the 40AD or the 40FD. The 2,000-watt inverter/charger lets you enjoy your favorite programs even when you're not connected to shoreline or generator power.

B) The BenchMark™ full comfort dinette features innerspring seat cushions and contemporary styling, giving you the look and feel of residential furniture. Flip up the seats to access the large storage spaces or fold down the table to quickly convert the dinette into a comfortable bed. For greater seating flexibility and safety while traveling, a child seat tether anchor is located in the forward-facing dinette seat.

C) The hoop-base lounge chair is a cozy rocker and a comfortable recliner with footrest. Best of all, it can be easily moved to your favorite spot when you're not traveling. Standard or available on most models.

D) The Rest Easy® multi-position lounge, shown with available leather, offers seating flexibility, comfort and a convenient beverage holder. At the touch of a button, the sofa becomes a relaxing recliner with ottoman. Touch the button again and it's a comfortable, contoured bed.

E) The new legless dining table design provides spacious dining for two and easily expands to accommodate four place settings for entertaining guests.

F) The available multi-function table seats two, but can expand to accommodate four. It also functions as a handy computer desk.

G) The residential-style buffet in the 40AD gives you ample storage. The table expands when you extend the StoreMore® slideout for even more room.

H) The available built-in combination washer-dryer features multiple wash, time and temperature cycles for a wide variety of fabrics.

IT'S THE LITTLE THINGS.

A) The ergonomically designed dash area places driving controls at your fingertips. The steering wheel is sized for responsive handling and features tilt and telescoping functions. The electronic transmission controls are located on the left-side driver's panel for easy visual reference and operation. Get your bearings or the outside temperature with the electronic compass/thermometer. Bus-style power driver and passenger sunvisors cut the glare at the touch of a button. The 36GD, 36RD and 40KD offer a center-mounted visor. Other Vectra extras include the sliding driver and passenger dual-glazed windows, driver and passenger map lights and the Sony rearview color monitor system with one-way audio that simplifies backing and maneuvering. Select the available Alpine® GPS mapping system to plan your route and stay on course anywhere in North America.

B) High-back, custom-designed Stitchcraft driver and passenger cab seats provide a perfect fit. A convenient footrest comes with the passenger seat. The power stepwell cover closes at the touch of a button to create a flat floor in front of the passenger seat. Popular upgrades include leather and a six-way power assist.

C) The available TripTek™ computer collects, analyzes and saves vehicle data while displaying trip information on the rear vision Sony color monitor. Displays include distance, time to destination, time traveled, fuel economy and a handy pre-trip checklist.

D) No more fumbling for the right key, thanks to the innovative KeyOne™ lock system. A single, double-bitted key opens most exterior compartments and doors so you won't have to go through a pocket full of keys. When unlocking doors, the exterior porch light and interior map lights stay on for 20 seconds. A power door lock with keyless remote is standard, as is the keyless entry with touch pad.

E) The RV Radio® with AM/FM, cassette and CD player features large control knobs and easy-to-operate buttons. Tune in the RV Radio with the new, convenient steering wheel remote. When you're parked, use the new hand-held remote.

F) Anti-lock air brakes deliver impressive stopping power. The automotive-style brake and accelerator pedals are adjustable at the push of a button to put them in the position that's just right for you.

G) Upgrade your listening choices with one free year of Sirius® Satellite Radio programming when you select the available Kenwood® Sirius Satellite receiver, shown here. High-altitude satellites deliver 100 channels of crystal clear programming anywhere in the United States, with no signal fades.

H) The four available two-way radios have up to a five-mile range and recharge at their built-in charging station.

A



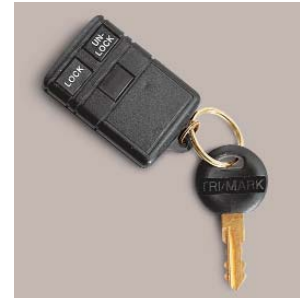
B



C



D



E



F



G



H



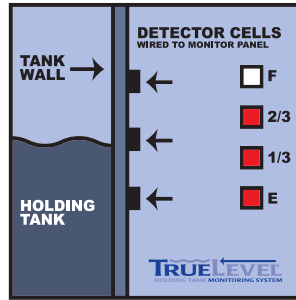
A



B



C



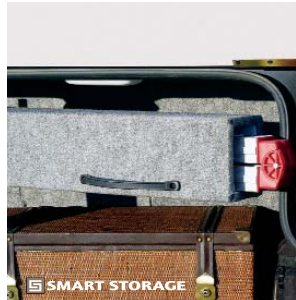
D



E



F



G



H



WORTH A CLOSER LOOK.

A) Smart Storage™ makes better use of storage space. The standard exterior entertainment center features a large slide-out storage box with an upper shelf and a fold-down front door.

B) Upgrade your exterior entertainment options with the available 24" flat-screen TV (shown) with DVD (20" TV on the 36RD and 40FD).

C) Winnebago Industries' exclusive TrueLevel™ holding tank monitoring system incorporates Mirus™ detector cells to ensure accurate fresh and wastewater tank level readings. Mirus detector cells produce a microelectric field that detects liquid levels from outside the tank. No more probes to corrode or clog. Just true, accurate readings time after time.

D) The OnePlace® systems center puts vital switches, gauges, levels and controls in one convenient location, so you can check them at a glance. Keep your electrical system running smoothly, even when operating your central air conditioning on a 30-amp. shoreline, with the PowerLine® energy management system. It monitors onboard electrical usage and automatically minimizes the nuisance of campground circuit breaker tripping by controlling the operation of "postponable" electrical loads during heavy power usage. As demand decreases, PowerLine automatically returns power to the secondary appliances and systems.

Interior climate control has never been more precise, thanks to Winnebago Industries TrueAir residential central air conditioning. It utilizes superior cooling technology to supply optimum comfort to every part of the coach. At the heart of the system is a Coleman®-Mach® cooling unit, located below the floor line of the coach. The unit provides a low vehicle profile and center of gravity, plus reduced interior noise and easy access for service. On cool days, the available heat pump provides warmth, minimizing the need to use LP.

E,F) Choose the available folding step ladder (not available on the 36RD) to make window washing a snap. The ladder fits securely in the storage box, making the best use of storage space.

G,H) Rinse off muddy or sandy gear outside at the exterior wash station. This heated compartment houses major plumbing and service points. The QuickPort™ service connection hatch features a convenient opening for the electrical cords and hoses to pass through. This unique design allows you to close your compartment doors even when connected to the electrical and sewer hookups at the campground. The sewer hose has a QuickConnect™ coupling valve and holster for easy storage.

EXTERIORS



Canyon Mist



Taupe



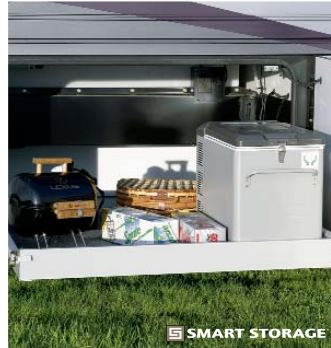
Water Cress



Full Body Paint



StoreMore features large, well-lit exterior storage compartments that are designed to accommodate bulky and odd-shaped items. Straps and attachment points keep the auxiliary air hose, tire and awning tools neatly tucked away. The compartments extend along with the slideroom for easy access without crawling under the slideroom. Compartment doors open easily, thanks to single-paddle latches and gas struts. The doors lock with a remote-controlled power lock and KeyOne. StoreMore is on the front driver side on all models, plus the front passenger side on 36RD and 40FD.



Thanks in part to the new Evolution Chassis, you'll have 40 percent more exterior storage than a typical diesel pusher. The optional slideout tray, shown here, with the available combination refrigerator/freezer (shown) is just the spot for additional picnic items and cold storage.

INTERIORS



Barcelona



Hazelnut



Terrace View Taupe



Available Stainless Steel Package



Concert Cherry



Honey Cherry



Portsmouth Oak

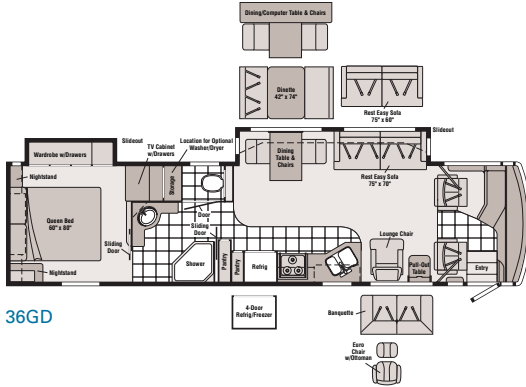


Washed Maple

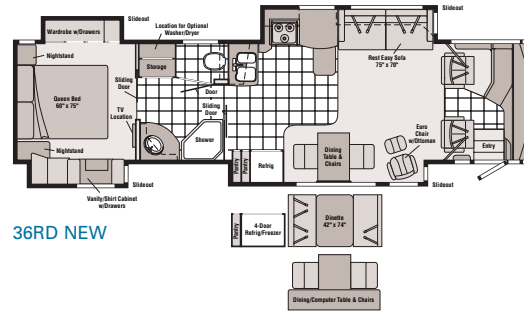
THE SAME STANDARDS INSIDE AND OUT.

We believe the same high standards we apply to construction should apply to interior design. That's why we design efficient floorplans based on customer input, why we look for durable fabrics in pleasing colors, and why we handcraft our own cabinets using traditional panel and rail construction.

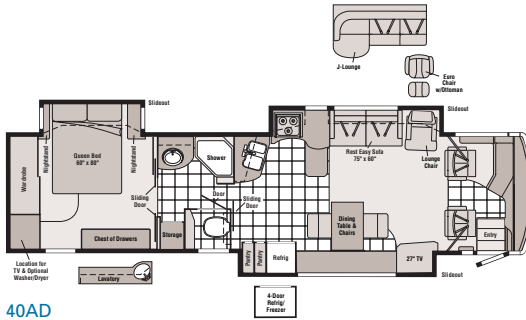
FLOORPLANS



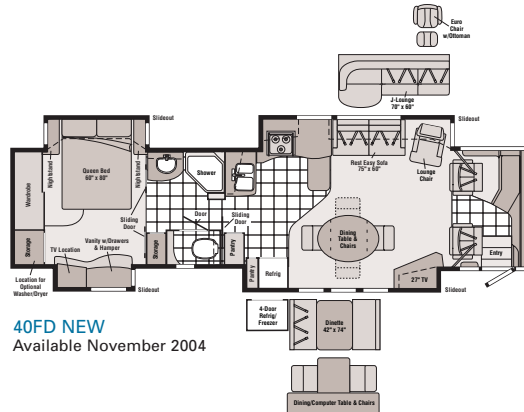
36GD



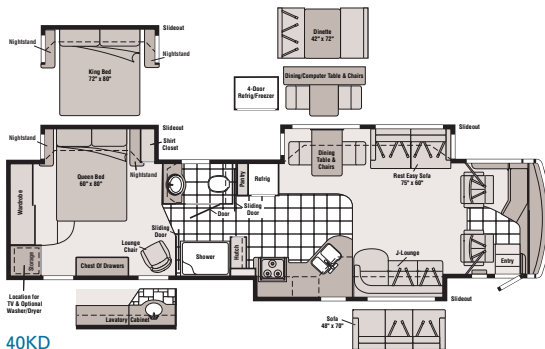
36RD NEW



40AD



40FD NEW
Available November 2004



40KD

 Ceramic Tile Floorcovering

 Seat Belts

Note: Dimensions shown are for sleeping space only and may vary due to styling differences. Dashed lines denote overhead storage areas.

EVOLUTION CHASSIS

The Winnebago Vectra is built on the exclusive Evolution Chassis. This chassis was specifically designed and created by Winnebago Industries and Freightliner for its intended RV application. Freightliner has a well-known reputation for providing top-quality chassis and vehicles. This reputation and expertise is evident as you take the wheel of a Vectra and experience the driving comfort, responsive handling and smooth ride. The independent front suspension (IFS) on the Vectra can make any road seem like a newly paved highway. IFS provides greater lateral stability, eliminates bump steer and lets each wheel move independently through its range of motion. Each tire maintains better contact with the road and you get a smooth ride comparable to that of a luxury sedan. On top of that, you'll have access to a network of more than 350 Freightliner chassis service centers, many open 24 hours a day, seven days a week.



2005 WINNEBAGO VECTRA® SPECIFICATIONS

| | 36RD NEW | 36GD | 40FD NEW | 40KD | 40AD |
|--|----------|---------|----------|---------|---------|
| Length | 36'5" | 36'5" | 39'8" | 39'8" | 39'8" |
| Exterior Height^a | 11'8" | 11'8" | 11'9" | 11'10" | 11'9" |
| Exterior Width^b | 8'5.5" | 8'5.5" | 8'5.5" | 8'5.5" | 8'5.5" |
| Exterior Storage^c (cu. ft.) | 127 | 140.7 | 136.4 | 179.8 | 181.2 |
| Interior Height | 6'8" | 6'8" | 6'8" | 6'8" | 6'8" |
| Interior Width | 8'0.5" | 8'0.5" | 8'0.5" | 8'0.5" | 8'0.5" |
| Fresh Water Capacity w/Heater^d (gal.) | 109 | 89 | 109 | 89 | 89 |
| Holding Tank Capacity – Black/Gray^e (gal.) | 55 / 54 | 54 / 55 | 62 / 55 | 54 / 55 | 62 / 55 |
| LP Capacity^f (gal.) | 31 | 31 | 31 | 31 | 31 |
| Fuel Capacity (gal.) | 100 | 100 | 100 | 100 | 100 |
| GCWR^g (lbs.) | 39,410 | 37,910 | 42,000 | 42,000 | 42,000 |
| GVWR (lbs.) | 29,410 | 27,910 | 32,000 | 32,000 | 32,000 |
| GAWR – Front (lbs.) | 10,410 | 10,410 | 12,000 | 12,000 | 12,000 |
| GAWR – Rear (lbs.) | 19,000 | 17,500 | 20,000 | 20,000 | 20,000 |
| Wheelbase | 228" | 228" | 267" | 267" | 267" |

Standard - S Optional - O

36RD 36GD 40FD 40KD 40AD

AUTOMOTIVE

| | 36RD | 36GD | 40FD | 40KD | 40AD |
|---|------|------|------|------|------|
| Chassis – EVOLUTIONSM Freightliner, Caterpillar 7.2L turbo-charged diesel, 350-hp, rear radiator, Allison 6-speed electronic 3000 MH transmission, ZF-IFS front air suspension, NeWay [®] rear air suspension, 160-amp. alternator, 4-wheel ABS, exhaust brake | S | S | | | |
| Chassis – EVOLUTIONSM Freightliner, Caterpillar 7.2L turbo-charged diesel, 350-hp, side radiator, Allison 6-speed electronic 3000 MH transmission, ZF-IFS front air suspension, NeWay rear air suspension, 160-amp. alternator, 4-wheel ABS, exhaust brake | | | S | S | S |
| Chassis – EVOLUTIONSM Freightliner, Cummins ISL 8.9L turbo-charged diesel, 400-hp, side radiator, Allison 6-speed electronic 3000 MH transmission, ZF-IFS front air suspension, NeWay rear air suspension, 160-amp. alternator, 4-wheel ABS, engine compression brake | | | O | O | O |
| Air Accessory Manifold quick connect, 50' air hose, pressure gauge, manual air shutoff, Leveling Jacks HWH [®] hydraulic, manual control, Tire Tools wrench & leverage bar, Trailer Hitch[®] 10,000-lbs. drawbar/500-lbs. maximum vertical tongue weight & wiring, 7-pin connector, Wheels stylized aluminum | S | S | S | S | S |
| Leveling Jacks hydraulic, automatic controls | O | O | O | O | O |

CAB AREA & DRIVER CONVENIENCES

| | 36RD | 36GD | 40FD | 40KD | 40AD |
|--|------|------|------|------|------|
| Cab Seats (Fabric) w/3-point adjustable seat belts, armrests, footrest (passenger), lumbar support, multi-adjustable slide/recline & swivel, Compass electronic w/outdoor thermometer, Console Center Cabinet, Cruise Control, Defroster Fans (2) auxiliary 2-speed w/instrument panel switch, Exhaust Brake Control, Floor Mat driver, carpet, Freightliner Information Center (see Freightliner owner's manual), Map Lights (2), Monitor System rearview, color, single camera & 1-way audio, Sony, Power Door Locks keyless entry w/remote, Powerpoints (3) 12-volt DC, Shades (front) wraparound, pleated w/pull cords, light filtering, cab windows, Steering Wheel custom, SmartWheel [™] w/power assist, tilt, Sunvisors (2) powered, Trim Panel driver & passenger sides, Window (driver) full slider w/screen, dual-glazed, Window (passenger) partial slider w/screen, dual-glazed, Windshield Wipers intermittent | S | S | S | S | S |
| Cab Seats (Leather w/vinyl surround), Cab Seats 6-way power-assist, driver & passenger, Cab Seats 6-way power-assist, driver, GPS Navigation System, Spotlight roof-mounted w/wireless remote, Trip Computer TripTek | O | O | O | O | O |
| Sunvisor center mounted | S | S | S | | |

ENTERTAINMENT

| | 36RD | 36GD | 40FD | 40KD | 40AD |
|---|------|------|------|------|------|
| CB Prep antenna, antenna lead, 12-volt DC power supply, Entertainment Center (Exterior) AM/FM radio, CD player w/remote, DC receptacle, AC duplex receptacle, TV jack, radio antenna, speakers (2), lockable compartment, Media (Cab) AM/FM/stereo cassette/CD, remotes, roof-mounted flexible rubber antenna, speakers (4), weather band, Radio Power Switch main/auxiliary battery, Satellite System Ready, Deluxe Sound System w/5-channel QSurrround [™] sound, amplifier, cube speakers (5), bass speakers (2), Telephone input & interior jacks, TV Enhancement Package antenna (amplified), interior jacks), coax wiring, cable input, exterior jack, reminder light, VCR/DVD w/remote [®] Video Selection System | S | S | S | S | S |
| CB Radio, Compact Multi-Disc Changer w/remote & 10-disc changer, Radios (4) 2-way, Satellite Dish Antenna RV digital, manual, elevation sensing unit, Satellite Dish Antenna RV digital, power, Satellite Dish RV digital, in-motion, Satellite Radio Kenwood, antenna, docking port, receiver, Sirius, Stereo System (Bedroom) AM/FM/CD player, Audiovox [®] recessed cube, speakers (2), bass speaker | O | O | O | O | O |

36RD 36GD 40FD 40KD 40AD

| | 36RD | 36GD | 40FD | 40KD | 40AD |
|--|------|------|------|------|------|
| Entertainment Center (Exterior) w/TV & DVD[®] AM/FM radio, DVD w/remote, DC receptacle, AC duplex receptacle, TV AC color, stereo w/remote, 20" flat-screen RCA (36RD and 40FD), 24" flat-screen Sony (40AD and 40KD), speakers (2), bass speaker, storage compartment | O | | O | O | O |
| TV 20" AC color, bedroom, flat-screen, LCD, stereo w/remote, remote extenders, Sharp | S | | | | |
| TV 20" AC color, bedroom, flat-screen, stereo w/remote, remote extenders, Sony | | S | S | S | S |
| TV 24" AC color front cabinet, flat-screen, stereo w/remote, Sony | S | S | | S | |
| TV 27" AC color front slideout entertainment center, flat-screen, stereo w/remote, Sony | | | S | | S |

INTERIOR

| | 36RD | 36GD | 40FD | 40KD | 40AD |
|--|------|------|------|------|------|
| Accessory Package rechargeable flashlight, rechargeable hand-held vacuum cleaner, Ceiling vinyl, Curtain front wraparound, pleated w/pull cords, Light wall lamp, Lights ceiling w/wall switches, incandescent, Lights fluorescent, recessed, galley, dinette, lounge w/2-way wall switches, Lights reading, auxiliary, Shades pleated, day/night, Sliding Stepwell | S | S | S | S | S |
| Cover Panel powered, Wainscoting w/chair rail, Windows dual-glazed/thermo-insulated | | | | | |
| Fan Ceiling bedroom | O | O | | | |
| Picture(s) | S | | | S | |

CABINETRY

| | 36RD | 36GD | 40FD | 40KD | 40AD |
|---|------|------|------|------|------|
| Concert Cherry stile-and-rail construction w/raised-panel inserts, Honey Cherry stile-and-rail construction w/raised-panel inserts, Portsmouth Oak stile-and-rail construction w/raised-panel inserts, Washed Maple stile-and-rail construction w/raised-panel inserts, | O | O | O | O | O |

COINTERTOPS

| | 36RD | 36GD | 40FD | 40KD | 40AD |
|--|------|------|------|------|------|
| Solid-Surface galley & bath, Corian | S | S | S | S | S |

FLOORCOVERING

| | 36RD | 36GD | 40FD | 40KD | 40AD |
|--|------|------|------|------|------|
| Carpeting w/pad, Ceramic Tile galley, bath & cab | S | S | S | S | S |

FURNITURE

| | 36RD | 36GD | 40FD | 40KD | 40AD |
|---|------|------|------|------|------|
| Banquette[®] (Fabric) w/throw pillows, access to storage below, Banquette[®] (Leather) w/throw pillows, access to storage below | | O | | | |
| BenchMark Full Comfort Dinette (Fabric) w/access to storage below, child seat tether anchor | O | O | O | O | |
| Buffet cabinet w/wood top | | | | | S |
| Buffet cabinet w/solid-surface top, Corian | | | | | O |
| Chair (Fabric) lounge, hoop-base | | | S | | S |
| Chair (Fabric) lounge, hoop-base, cabinet w/table | | S | | | |
| Chair (Leather) lounge, hoop-base | | O | O | | O |
| Dining Table & Chairs (2) free standing, (2) folding | S | S | S | S | S |
| J-Lounge (Fabric) | | | | | S |
| J-Lounge (Leather) | | | | | O |
| Lounge Chair[®] (Leather) Euro w/ottoman | S | O | O | | O |

2005 WINNEBAGO VECTRA® SPECIFICATIONS

| Standard - S | Optional - O | 36RD | 36GD | 40FD | 40KD | 40AD |
|---|--------------|------|------|------|------|------|
| Multi-Function Table & Chairs (2) free standing, (2) folding (solid-surface top) | | O | O | O | O | |
| Refr. Easy Multi-Position Lounge (Fabric 75 x 60) | | | | S | S | S |
| Refr. Easy Multi-Position Lounge (Fabric 75 x 70) | | S | S | | | |
| Refr. Easy Multi-Position Lounge (Leather 75 x 60) | | | | O | O | O |
| Refr. Easy Multi-Position Lounge (Leather 75 x 70) | | O | O | | | |
| Refr. Easy Multi-Position Lounge (Fabric or Leather 75 x 60) dual recliners | | O | O | O | O | O |
| Refr. Easy J-Lounge Style (Fabric or Leather 70 x 60) | | | | O | O | O |
| Sofa (Fabric) access to storage below, throw pillows, Sofa (Leather) access to storage below, throw pillows | | | | | O | |

GALLEY

| | | | | | | |
|--|---|---|---|---|---|---|
| Countertop w/backsplash, Corian, Faucet single-control w/pullout sprayer, Moen, Lights fluorescent on ceiling & under cabinet, Microwave/Convection Oven w/exterior vent range fan, residential 30", Sharp, Mirror(s) , Pantry, Range Cover flush-mounted (countertop material), Range Top 3-burner w/storage below, recessed, sealed burners, Amana® | S | S | S | S | S | S |
| Refrigerator/Freezer large double-door w/ice maker, Norcold® Roof Vent insulated, powered ventilator fan, Silverware Tray, Sink double-bowl, molded, w/sink covers (countertop material), Towel Rack wire, Wastepaper Basket, Water Purification System Everpure | | | | | | |
| Counter Extension flip-up, Cutting Board slideout | | S | | | | |
| Dishwasher under-counter, built-in style | | | | | O | |
| Dishwasher drawer-style | O | | O | | O | |
| Island Cabinet w/solid-surface countertop | S | | S | | S | |
| Island Storage Bin large roll-out | | | | S | | |
| Microwave/Speedcook Oven w/range fan, residential 30", G.E. Advantium, Range 3-burner w/large oven, glass door w/storage below, recessed, sealed burners, Amana, Refrigerator/Freezer 4-door w/ice maker, Norcold, Stainless Steel Package w/stainless steel appliances, brushed nickel light fixtures, decorative bath and cabinet hardware throughout | O | O | O | O | O | O |

BATH

| | | | | | | |
|--|---|---|---|---|---|---|
| Cabinet lavatory, Cabinet linen, Cabinet medicine, Countertop w/backsplash, Corian, Faucet(s) (lavatory) single-control, Faucet (shower) single-control w/flexible showerhead, Light shower, Light fluorescent, recessed, Lights makeup, Robe Hook, Roof Vent insulated, power, private toilet room, Shower w/wall surround, Shower Door textured glass, Skylight, Sink oval, Tissue Holder, Toilet porcelain w/foot pedal & sprayer | S | S | S | S | S | S |
| Magazine Rack | | | S | | S | |
| Shower Head hand-held | | | | O | | |
| Shower Package fold-down shower seat, hand-held showerhead | O | O | O | O | O | |
| Towel Bar | S | | S | S | S | |
| Towel Ring | | S | S | S | S | |

BEDROOM

| | | | | | | |
|---|---|---|---|---|---|---|
| Bed queen, Serta® innerspring w/underbed storage, bedspread, pillows, throw pillows, Cabinet wardrobe, carpeted floor, Headboard, Lights reading, Light decorative ceiling w/dimmer, Nightstand(s) , Powerpoint 12-volt DC receptacle | S | S | S | S | S | S |
| Bed Sleep Number queen-size mattress by Select Comfort | O | O | O | O | O | O |
| Bed Sleep Number king-size mattress by Select Comfort | | | | O | | |
| Cabinet lavatory, Cabinet medicine, Faucet (lavatory) single-control, Moen, Lights makeup, Sink oval | | | | O | O | |
| Chair (Fabric) lounge, swivel w/ottoman, Flexsteel | | | | S | | |
| Chest of Drawers | S | S | S | S | S | |
| Light(s) decorative wall lamp(s) | S | S | S | S | | |
| Mirror(s) | S | S | | | | |
| Vanity Cabinet | S | | S | | | |

EXTERIOR

| | | | | | | |
|---|---|---|---|---|---|---|
| Air Horns roof-mounted, Awning slideroom cover, Awning ® patio, entrance door, electric, Awning Rails w/rain gutters, Door entrance w/moveable separate screen door, deadbolt lock, remote & touch-pad entry, Entrance Door Step double, electric w/doorjamb switch | S | S | S | S | S | S |
|---|---|---|---|---|---|---|

a The height of each model is measured to the top of the tallest standard feature and is based on the curb weight of a typically equipped unit. The actual height of your vehicle may vary by several inches depending on chassis or equipment variations. Please check with your dealer for further information.

b Vectra floorplans feature a wide-body design — over 96". In making your purchase decision, you should be aware that some states restrict access on some or all state roads to 96" in body width. Before making your purchase decision, you should confirm the road usage laws in the states of interest to you.

c The load capacity of your motor home is designated by weight, not by volume, so you cannot necessarily use all available space when loading your motor home. d Capacities are based on measurements prior to tank installation. Slight capacity variations can result due to installation applications.

e Not all items available in combination. See dealer for details.

| | 36RD | 36GD | 40FD | 40KD | 40AD |
|---|------|------|------|------|------|
| Full Body Paint Options Taupe, Canyon Mist, Water Cress, Ladder, Lights fog lamps, Light porch w/interior switch, Light under hood, Lights compartment, Light service, driver-side, Lights auxiliary docking lamps, Locking Fuel-fill Doors, Mirrors electric remote w/defrost, full body paint color, Mudflaps (2) rear, Receptacle AC duplex, Sidewall Skin 1-piece smooth fiberglass, high-gloss, Storage Compartments smooth valance panels, trunk liner, gas cylinders, TriMark® KeyOne System, paddle latch, lights | S | S | S | S | S |
| Awning ® windows, Compartment Tray slideout, Mud Guard full-width, Spotlight w/wireless remote, Undercoating, Front Exterior Protective Mask | O | O | O | O | O |
| Refrigerator/Freezer portable, requires slideout tray option | O | | O | O | O |
| Storage Box ® slide-out, upper shelf & fold-down door, Step Ladder folding | | O | O | O | O |

SYSTEMS

| | | | | | |
|--|---|---|---|---|---|
| Automotive Heater/Air Conditioner, Auxiliary Start Circuit, Batteries (Coach) (3) ® deep cycle, Battery (Coach) disconnect system, Battery Digital Voltmeter, Battery Charge Control automatic dual, Central Air Heat Pump, Drain 1 1/2" water tank, Electrical Distribution System AC & DC breaker panels, 50-amp. electronic converter/charger® Furnace 40,000 BTU, low-profile, Generator 7,500-watt, Onan® Quiet Diesel™, Generator/Shoreline Automatic Changeover Switch, Converter/Inverter/Charger ® DC/AC, 2,000-watt w/remote panel, ONEPLACE ® Systems Center wall-mounted, POWERLINE ® Energy Management Display, courtesy light, generator hourmeter gauge, generator start/stop switch, heating and A/C thermostat, holding tank levels, LP tank level, solar panel/battery charger light, water heater switch, water heater on light & pilot indicator light, water pump switch, water tank level, Power Cord 50-amp., Service Center (Drainage/Water) drainage valves, holding tank flushing system, city water hookup/tank diverter fill, drain for fresh water system, exterior wash station w/pump switch, soap dispenser, QuickPort ® service connection hatch, paper towel holder, portable satellite hookup, 20' sewer hose w/ QuickConnect ® coupling valve, Service Center (Electrical) cable inputs, power cord, QuickPort service connection hatch, shoreline/generator automatic changeover switch, telephone input, Solar Panel 10-watt battery charger, Tank flushing system, black tank only, Tank holding, heated compartment, Tank LP , permanent mount w/gauge, TRUEATR Residential Central Air Conditioning System, TRUELEVEL holding tank monitoring system, Water Heater 10-gallon electronic ignition, LP gas/120 vac w/motoraid, Water System Winterization Package water heater bypass valve & siphon tube, Water Hookup city, Water Pump demand, variable speed, Washer/Dryer Prep, Water Tank Fill pressurized city hookup w/diverter valve, Water Tank Fill door, locking, gravity | S | S | S | S | S |
| Furnace 25,000 BTU, low-profile, secondary | | | S | S | S |
| Power Cord Reel powered, 12V, Vacuum Cleaner central, Dirt Devil®, Vacuum Cleaner portable, Black & Decker®, Washer/Dryer Combination | O | O | O | O | O |

SLIDEOUT

| | | | | | |
|--|---|---|---|---|---|
| Slideout Room rear RH w/slideroom cover | S | | S | | |
| Slideout Room rear LH w/slideroom cover | S | S | S | S | S |
| Slideout Room front LH, sofa/galley, STOREMORE | S | | S | | S |
| Slideout Room front LH, sofa/dining, STOREMORE | | S | S | | S |
| Slideout Room front RH, refrig/dining, STOREMORE | S | | | | |
| Slideout Room front RH, J-Lounge/galley | | | | S | |
| Slideout Room front RH, TV/dining/refrig | | | | | S |
| Slideout Room front RH, TV/dining/refrig, STOREMORE | | | S | | |

SAFETY

| | | | | | |
|--|---|---|---|---|---|
| Assist Bar(s) interior, Assist Handle exterior, lighted, acrylic w/logo, Bumpers front & rear, Child Seat tether anchor, Detectors/Alarms LP leak, smoke, carbon monoxide, Fire Extinguisher 10 B.C., Ground Fault Interrupter, Light center high-mount brake lamp, Light(s) courtesy w/wall switch(es), Seat Belts cab, 3-point, Seat Belts lap (in selected areas), Window escape, Windshield laminated safety glass | S | S | S | S | S |
| Security Vault (bedroom) key lockable | O | O | O | O | O |

WARRANTY^h

| | | | | | |
|--|---|---|---|---|---|
| 12-month/15,000-mile basic limited warranty, 36-month/36,000-mile warranty on structure, 10-year limited parts & labor warranty on roof skin ⁱ | S | S | S | S | S |
|--|---|---|---|---|---|

f Capacities shown are tank manufacturer's listed water capacity (W.C.). Actual filled LP capacity is 80% of listing due to overfilling prevention device on tank.

g Actual towing capacity is dependent on your particular loading and towing circumstances, which includes the GVWR, GAWR and GCWR, as well as adequate trailer brakes. Please refer to the Operator's Manual of your vehicle for further towing information.

h See separate chassis warranty details provided in owner's manual.

i See your dealer for complete warranty information.

Winnebago Industries' continuing program of product improvement makes specifications, equipment, model availability and prices subject to change without notice. Comparisons to other motor homes are based on the most recent information available.

NOT ALL MOTOR HOMES ARE CREATED EQUAL. As you take a closer look, you'll see that there is much more to the Winnebago Vectra than a long list of standard features and compelling floorplans. Beneath it all you'll find a SuperStructure® foundation of strength and durability, and Winnebago Industries' recognized service and warranty support.



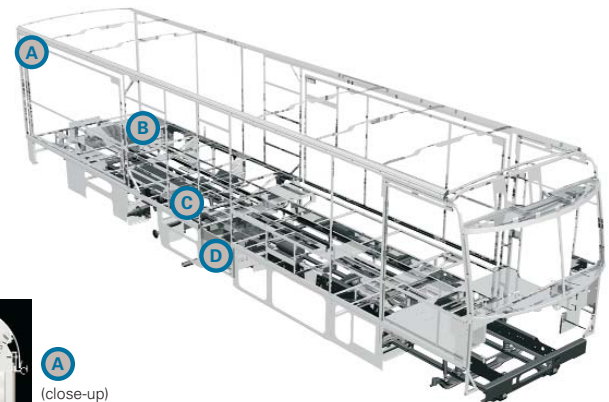
WE ARE COMMITTED TO SERVICE. We back our motor homes with the best after-the-sale service in the industry. This includes a 12-month/15,000-mile basic limited warranty; 36-month/36,000-mile warranty on structure; standard 10-year limited parts-and-labor roof skin warranty; and complimentary 24-hour Roadside Assistance Program. TripSaver Fast Track Parts guarantees that in-stock warranty parts ship directly to your dealer within 24 hours. Winnebago Industries has a nationwide dealer service network.



CERTIFIED QUALITY. Recreation Vehicle Dealer Association members annually rate RV manufacturers on the quality of their products, and on their sales and service support. Winnebago Industries has achieved the coveted Quality Circle Award every year since its inception, the only RV manufacturer to do so.



WARNING: JOINING WIT HAS BEEN KNOWN TO CAUSE EXCESSIVE FUN. Winnebago-Itasca Travelers (WIT) is a club for owners of Winnebago Industries motor homes. WIT is a great way to meet people and offers you caravans and rallies, local and state group activities, and other benefits for RVers.



A
(close-up)

SUPERSTRUCTURE is the term given to Winnebago Industries' structural motor home design and construction. Rather than a single component, it is the culmination of design integration that incorporates steel and aluminum substructures; composite-design laminated floor risers; interlocking joint technology; and Thermo-Panel® floor, roof and sidewalls to form a high-strength, durable vehicle body.

Thermo-Panel manufacturing combines a durable exterior panel with welded aluminum support substructures. The substructures are embedded in a high-density, block-foam insulation core to create a strong, durable, yet lightweight sidewall. Just another Winnebago Industries' invention.

A Interlocking joint construction utilizes advanced extruded aluminum structural components to create integrated floor-to-sidewall and sidewall-to-roof joints. This design effectively distributes the weight of the walls and roof, making a stronger and more durable body than competitor designs that rely on screws to carry the weight.

B The foundation substructure assembly is precision-aligned to maximize strength and cross-coach support as well as durability.

C Laminated risers feature a welded aluminum core for superior strength and provide a stable base for the floor structure and storage compartments.

D Critical steel components are treated using an advanced electrodeposition coating process that provides superior corrosion protection.



One-year-old competitor's rubber roof



One-year-old Winnebago Industries fiberglass roof

BUILT TO A HIGHER STANDARD.

The Vectra features a crowned, one-piece fiberglass roof skin backed with a 10-year limited parts-and-labor roof skin warranty. Fiberglass offers superior strength, attractiveness and durability compared to rubber roofs found on many competitive models. Over time, rubber roofs are susceptible to chalking, streaking and degradation, and have less puncture and tear resistance than fiberglass.



©2004 Winnebago Industries, Inc., Forest City, IA 50436. Printed in USA.

Seat belts are your most important hookup. Always buckle up.

NYSE listing: WGO

Visit us at www.winnebagoind.com