



DANGER

Danger of electrical shock, burns or death. Always remove all power sources before attempting any repair, service or diagnostic work. Power can be present from shore power, generator, inverter or battery. All power sources must be disabled and secured before performing any service.

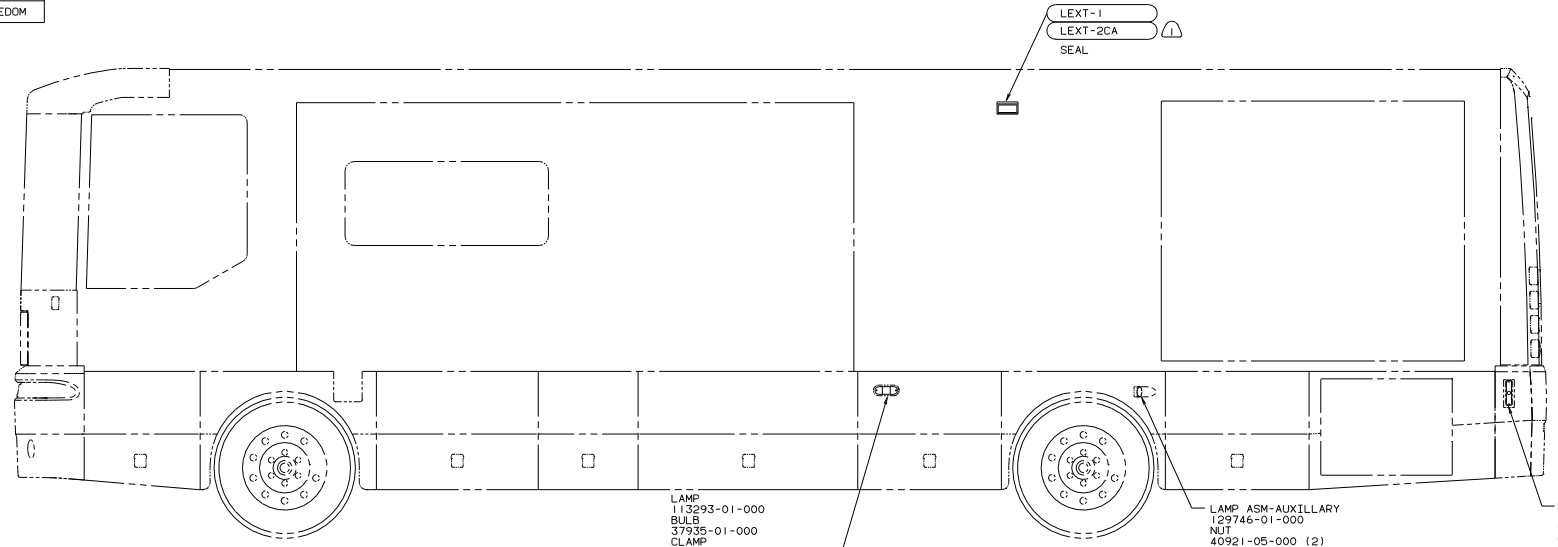


CAUTION

If you lack the skills, tools or equipment to perform diagnostic or repair work leave such work to an authorized Winnebago Industries dealer or other qualified shop.

DWG NO	MODEL
137741-01	ADVANTAGE
137741-02	FREEDOM

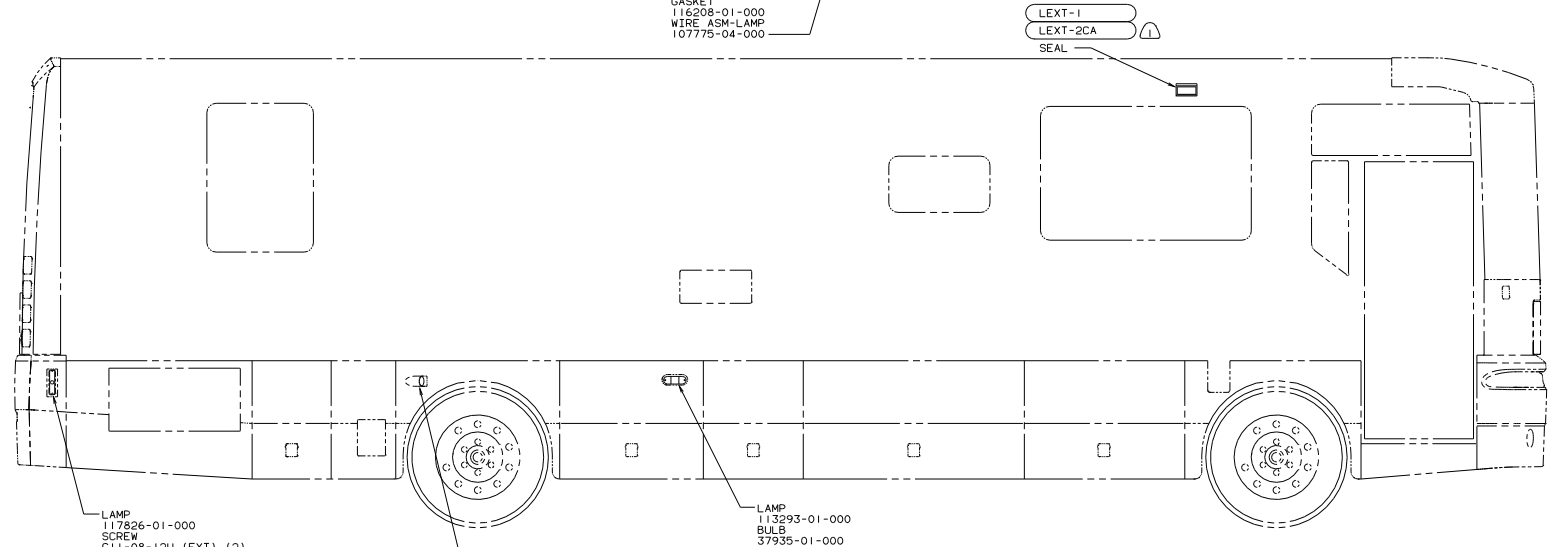
RELEASE	REV	DATE	OF	REV	NO	137741
REV	NO	REVISION	RECORD	DATE	BY	CHK



- LAMP 113293-01-000
- BULB 37935-01-000
- CLAMP 10495-01-000
- SCREW G67-10-12U (EXT)
- SCREW G11-08-16U (EXT) (2)
- NUT 40921-05-000 (2)
- GASKET 116208-01-000
- WIRE ASM-LAMP 107775-04-000

- LAMP ASM-AUXILLARY 129746-01-000
- NUT 40921-05-000 (2)
- SCREW G39-08-10U (EXT) (3)
- SHIM-STRIKER 120494-03-CHT (A/R)

- LAMP 117826-01-000
- SCREW G11-08-12U (EXT) (2)
- BULB 36196-01-000
- GASKET 117826-03-000



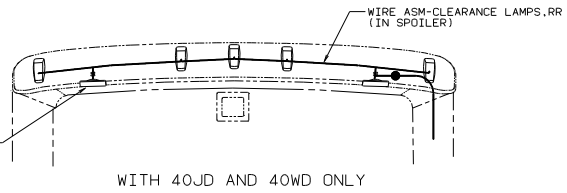
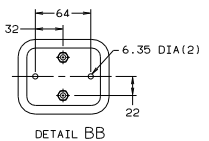
- LAMP 117826-01-000
- SCREW G11-08-12U (EXT) (2)
- BULB 36196-01-000
- GASKET 117826-03-000

- LAMP ASM-AUXILLARY 129746-01-000
- NUT 40921-05-000 (2)
- SCREW G39-08-10U (EXT) (3)
- SHIM-STRIKER 120494-03-CHT (A/R)

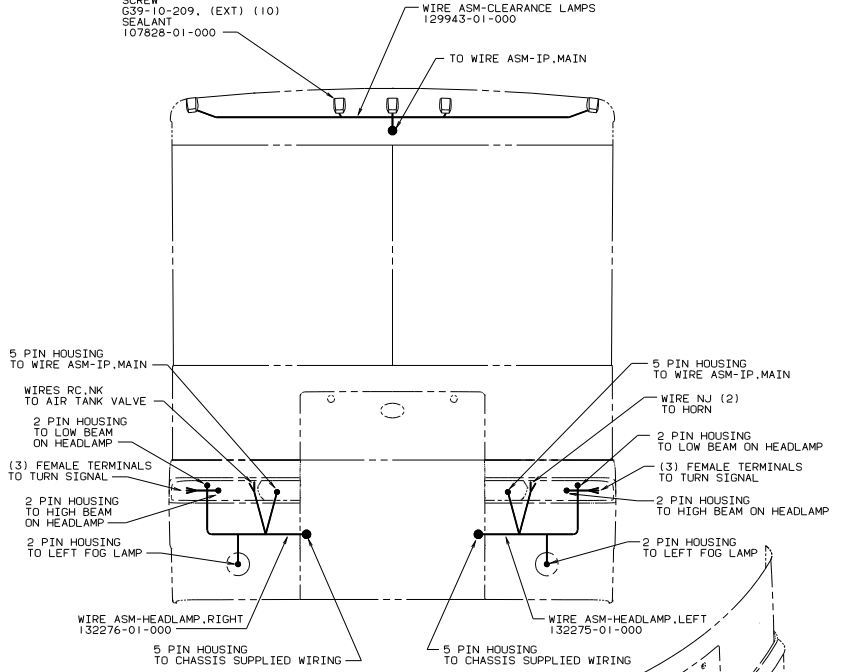
- LAMP 113293-01-000
- BULB 37935-01-000
- CLAMP 10495-01-000
- SCREW G67-10-12U (EXT)
- SCREW G11-08-16U (EXT) (2)
- NUT 40921-05-000 (2)
- GASKET 116208-01-000
- WIRE ASM-LAMP 107775-04-000

NOTES:
 1. INSTALL WITH WIRES TOWARDS ROOF.

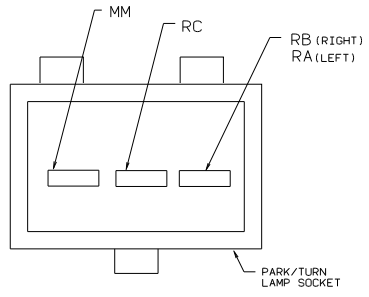
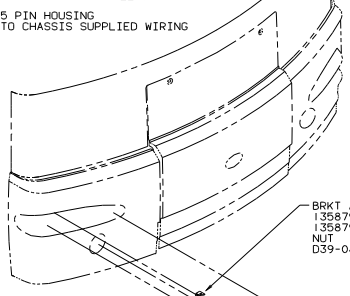
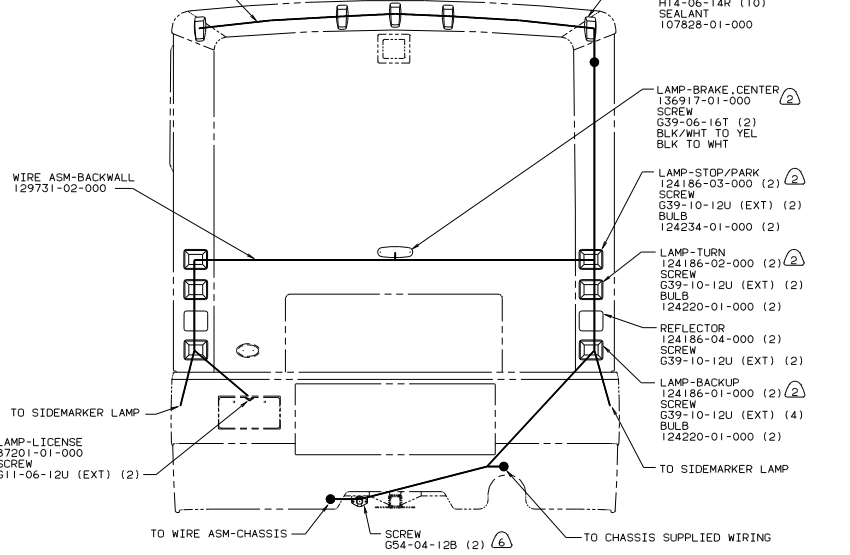
		WINNEBAGO		02 O-SERIES	
DATE	DATE	UNSPECIFIED TOLERANCES ARE:	MATERIAL:		
DATE	DATE	FR. 1/16	FR. 1/16		
DATE	DATE	2ND PL. 1/32	2ND PL. 1/32		
DATE	DATE	3RD PL. 1/64	3RD PL. 1/64		
DATE	DATE	THIRD ANGLE PROJECTION			
DATE	DATE				
LAMP NO	TITLE	WIRING INSTL-EXTERIOR LAMPS			
SCALE	SCALE	NO	DO NOT SCALE DIMENSIONS	SHEET	NO
1	2	1	2	1	2
				137741	
				PAGE 180	



- ③ LAMP-CLEARANCE AMBER 129942-01-000 (5)
- SCREW G39-10-209, (EXT) (10)
- SEALANT 107828-01-000



- WIRE ASM-CLEARANCE LAMPS, RR 129365-02-000



- ⑥ CONNECTOR-PLUG, TRAILER (113589-01-000) TO BE SUPPLIED IN COACH.
- ⑤ CONNECT WIRES FROM WIRE ASM-HEADLAMP AS SHOWN TO PARK TURN LAMP SOCKET, THEN FILL WITH HOT MELT GLUE.
- ④ MOUNT TO PARKLAMP LOOSE. WHEN LIGHT IS POSITIONED PROPERLY IN OPENING TIGHTEN ALL FASTENERS.
- ③ THE LIGHT MUST BE POSITIONED WITH THE WORD "REAR" ON THE BASE FACING REARWARD.
- ② REMOVE EXISTING NUTS FROM LAMP ASM AND DO NOT USE. DRILL TWO PILOT HOLES IN BASE OF LAMP. USE NEW SCREWS TO ATTACH. SEE DETAIL BB.
- ① THE LIGHT MUST BE POSITIONED WITH THE WORD "REAR" ON THE BASE FACING FORWARD.

- LAMP ASM-FOG 130051-01-000 (RH), 130051-02-000 (LH)
- BOLT G26-06-12B (4)
- NUT D39-06-00B (4)
- HEADLAMP ASM W/HALOGEN BULB 129927-01-000 (RH), 129927-02-000 (LH)
- CLIP 124163-01-000 (6)
- LAMP ASM-PARK/TURN 124161-01-000 RH, 124161-02-000 LH
- BOLT 128053-01-000(2)
- SPACER 98842-51-003(2)