



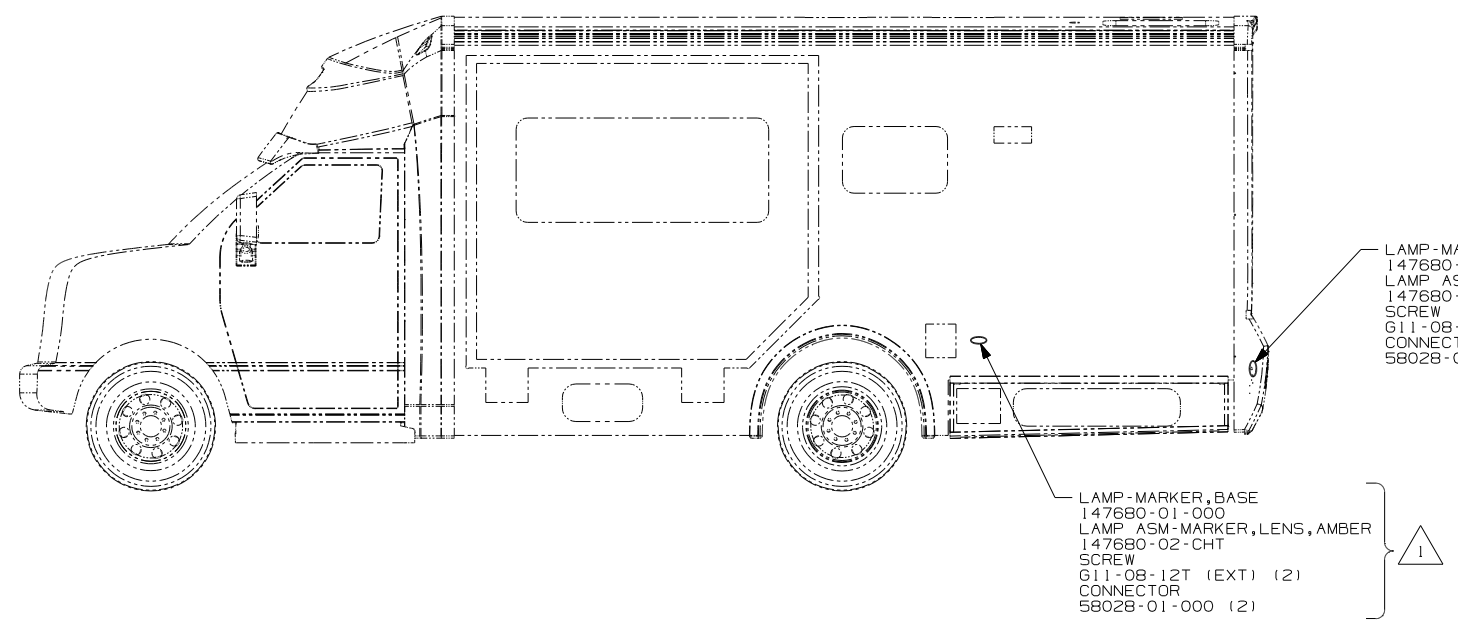
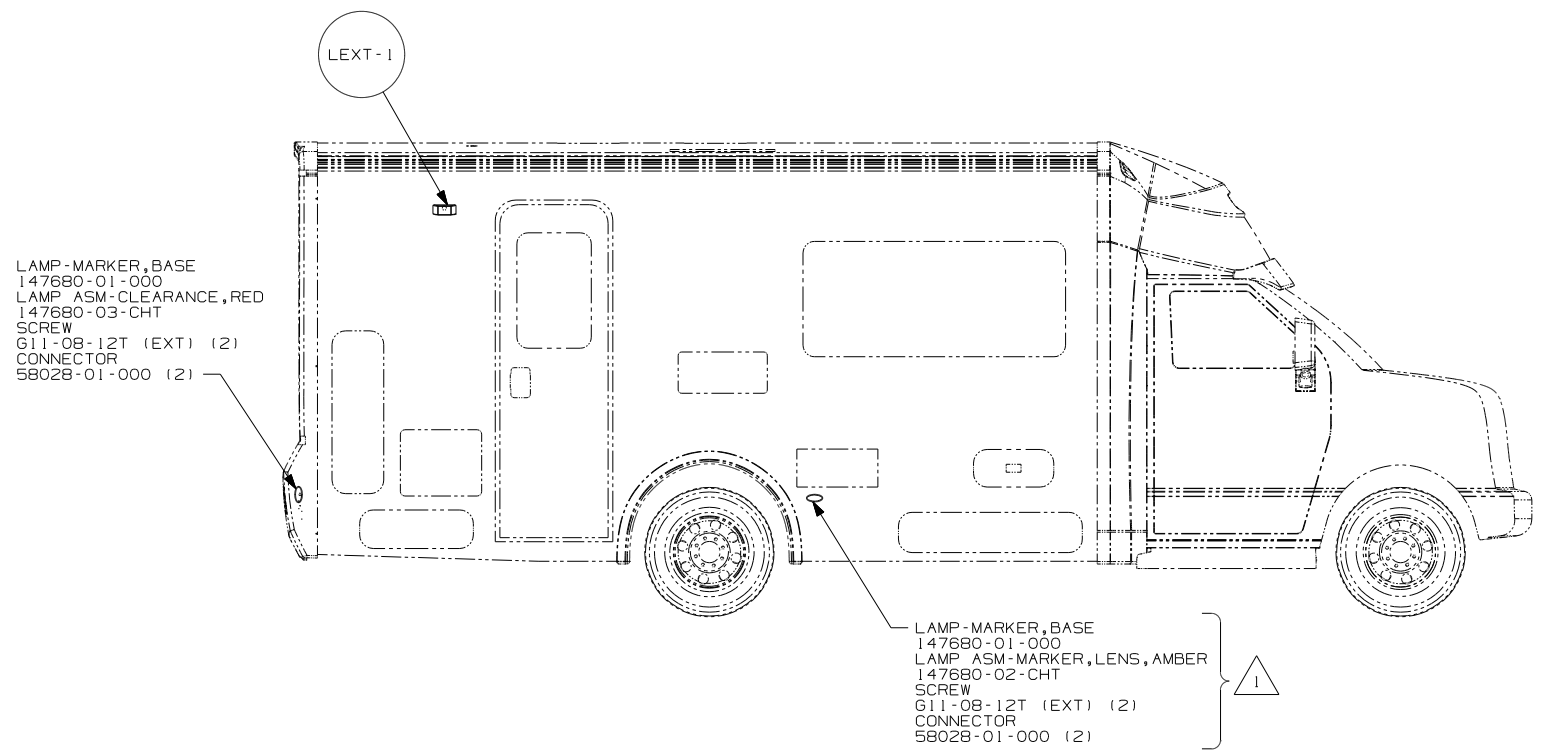
**DANGER**

**Danger of electrical shock, burns or death.** Always remove all power sources before attempting any repair, service or diagnostic work. Power can be present from shore power, generator, inverter or battery. All power sources must be disabled and secured before performing any service.



**CAUTION**

If you lack the skills, tools or equipment to perform diagnostic or repair work leave such work to an authorized Winnebago Industries dealer or other qualified shop.



265 CODES/STANDARDS-CSA/CMVSS  
1B1 CODES/STANDARDS USA  
1B1 265

**WINNEBAGO** COPYRIGHT 2006 WINNEBAGO INDUSTRIES, INC.

DFTR	ORIG. DATE
CHKR	ALL DIMENSIONS ARE IN MILLIMETERS
P.E.	
M.E.	FIRST USED
DSNR	08 700-SERIES
UNSPECIFIED TOLERANCES ARE:	MATERIAL:
HOLE DIM (X) :	
ONE-PLACE (X.X) :	
TWO-PLACE (X.XX) :	
ANGLE :	
THIRD ANGLE PROJECTION	

DO NOT SCALE DRAWING

TITLE: WIRING INSTL-EXTERIOR LAMPS

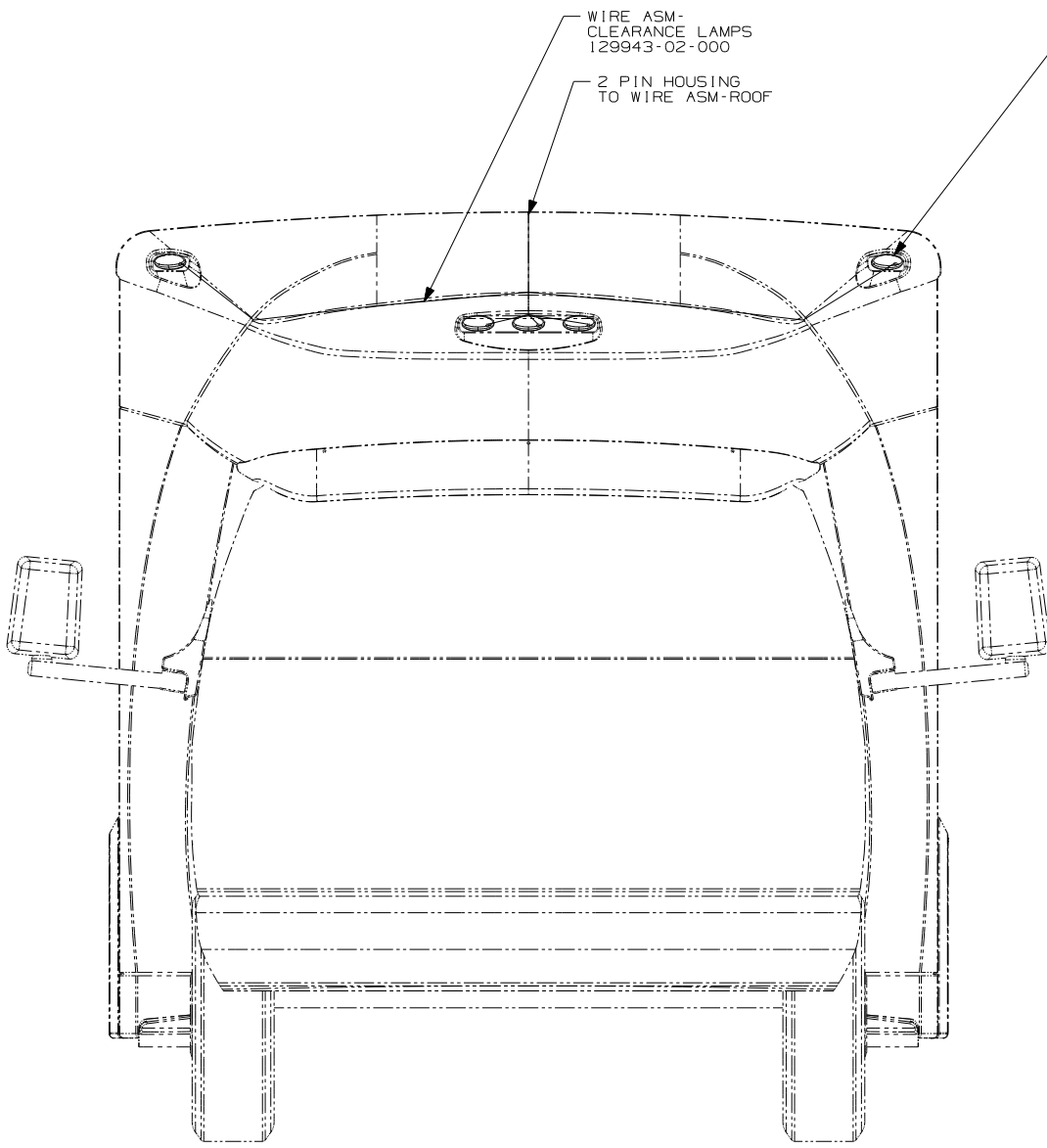
SHEET 1 OF 2 PART NO 161705 REV

REF: 1 5/24/2007

1 USED ON 729H ONLY.  
NOTES:

FOR ELECTRICAL TORQUE SPECIFICATIONS SEE DWG NO. 128783-01-000

X-X FOR ELECTRICAL CALLOUTS SEE DWG NO. 121339-01-000

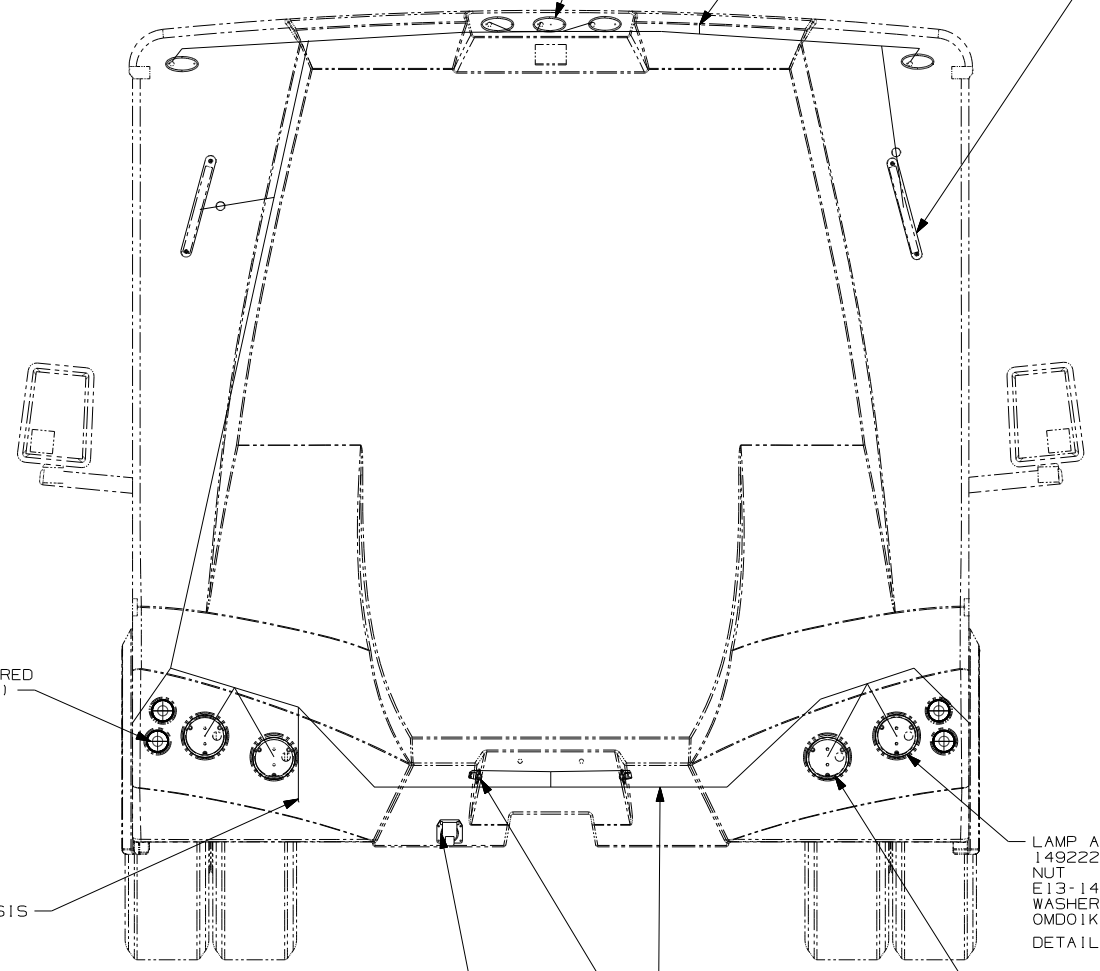


LAMP-MARKER, BASE  
147680-01-000 (5)  
LAMP ASM-CLEARANCE, RED  
147680-02-CHT (5)  
SCREW  
611-08-12U (EXT) (10)

LAMP-MARKER, BASE  
147680-01-000 (5)  
LAMP ASM-CLEARANCE, RED  
147680-02-CHT (5)  
SCREW  
611-08-12U (EXT) (10)

2 PIN HSG CONNECTS  
TO WIRE ASM-ROOF

LIGHT ASM-BRAKE  
CENTER MOUNT (2)  
151076-01-000  
SCREW  
611-08-08T (4)



REFLECTOR-ROUND, RED  
141514-01-000 (4)

8 PIN HSG  
TO WIRE ASM-CHASSIS

WIRE ASM-BACKWALL  
156949-01-000

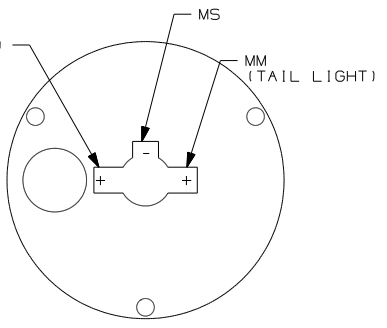
LIGHT-LICENSE  
87201-01-000 (2)  
SCREW  
611-06-12U (EXT) (4)

CONNECTOR-TRAILER  
157593-01-000  
SCREW  
642-04-12B (4)  
CONNECTOR-PLUG

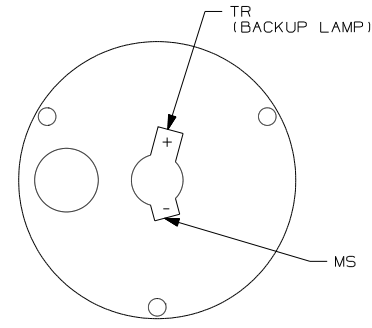
LAMP ASM-STOP, TURN, TAIL  
149222-01-000 (2)  
NUT  
E13-14-00B (4)  
WASHER  
OMD01K-06-000 (4)  
DETAIL BA

LAMP ASM-BACKUP  
149222-02-000 (2)  
NUT  
E13-14-00B (4)  
WASHER  
OMD01K-06-000 (4)  
DETAIL BB

SC  
(RIGHT SIDE STOP/TURN)  
OR  
SD  
(LEFT SIDE STOP/TURN)



DETAIL BA  
(REAR VIEW)



DETAIL BB  
(REAR VIEW)

- 3 LOCATED IN REAR CAP.
- 2 SECURE WIRE BELOW COACH WITH CLAMP 10495-01-000 AND SCREW G67-10-12B.
- 1 CONNECTOR-PLUG, TRAILER 146246-01-000 TO BE SUPPLIED LOOSE IN COACH WITH TRAILER TOW PACKAGE.

NOTES:

265 CODES/STANDARDS-CSA/CMVSS  
1B1 CODES/STANDARDS USA

1B1 265

FIRST USED  
08 700-SERIES

DO NOT SCALE DRAWING

TITLE:  
WIRING INSTL-EXTERIOR LAMPS

SHEET 2 PART NO 161705 REV

FOR ELECTRICAL  
TORQUE  
SPECIFICATIONS  
SEE DWG NO.  
128783-01-000

X-X  
FOR  
ELECTRICAL  
CALLOUTS  
SEE DWG NO.  
121339-01-000