



**DANGER**

**Danger of electrical shock, burns or death.** Always remove all power sources before attempting any repair, service or diagnostic work. Power can be present from shore power, generator, inverter or battery. All power sources must be disabled and secured before performing any service.



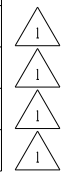
**CAUTION**

If you lack the skills, tools or equipment to perform diagnostic or repair work leave such work to an authorized Winnebago Industries dealer or other qualified shop.

DRAWING NO.	FEATURES	SHEETS
165490-01	12X	1, 2
165490-02	22W	1, 3
165490-03	644	1, 4

RELEASE	REV DATE A	DWG NO 165490
REV ZONE	REVISION RECORD	DATE DFR-ORIG

		222B	224V	229T	231C	231J	231N
CABLE ASM-STARTER (RED)	16B 16C 16Y	141415-34-056	141415-34-048	141415-34-056	141415-34-053	141415-34-052	141415-34-068
	1PY	-----	141415-34-025	141415-34-029	141415-34-036	-----	-----
CABLE ASM-COACH BATTERY (YEL)	16B 16C 16Y	141415-52-016	141415-52-012	141415-52-021	141415-52-016	141415-52-018	141415-52-024
	1PY	-----	141415-52-012	141415-52-021	141415-52-016	-----	-----
CABLE ASM-COACH BATTERY GND (BLK)	16B 16C 16Y	133566-12-008	133566-12-008	133566-12-009	133566-12-008	133566-12-008	133566-12-008
	1PY	-----	133566-12-008	133566-12-009	133566-12-008	-----	-----
CABLE ASM-GENERATOR (GRN)	16B 16C 16Y	141415-42-032	141415-42-032	141415-42-064	141415-42-068	141415-42-028	141415-42-050
	1PY	-----	141415-42-032	141415-42-064	141415-42-068	-----	-----
CABLE ASM-GENERATOR GND (BLK)	16B 16C 16Y	133566-11-008	133566-11-008	133566-11-008	133566-11-008	133566-11-008	133566-11-008
	1PY	-----	133566-11-008	133566-11-008	133566-11-008	-----	-----



		329B	330D	331C
CABLE ASM-STARTER (RED)	16Y	141415-34-056	141415-34-050	141415-34-049
	1PY	141415-34-029	-----	141415-34-032
CABLE ASM-COACH BATTERY (YEL)	16Y	141415-52-021	141415-52-017	141415-52-016
	1PY	141415-52-021	-----	141415-52-016
CABLE ASM-COACH BATTERY GND (BLK)	16Y	133566-12-007	133566-12-008	133566-12-006
	1PY	133566-12-007	-----	133566-12-006
CABLE ASM-GENERATOR (GRN)	16Y	141415-42-044	141415-42-077	141415-42-068
	1PY	141415-42-044	-----	141415-42-068
CABLE ASM-GENERATOR GND (BLK)	16Y	133566-11-008	133566-11-008	133566-11-008
	1PY	133566-11-008	-----	133566-11-008
LEVELING SYSTEM POWER CABLE (BLU)	60M	141415-22-045	141415-22-022	141415-22-025



		728B	730C
CABLE ASM-STARTER (RED)	16Y	141415-34-057	141415-34-053
CABLE ASM-COACH BATTERY (YEL)	16Y	141415-52-020	141415-52-020
CABLE ASM-COACH BATTERY GND (BLK)	16Y	133566-12-008	133566-12-008
CABLE ASM-GENERATOR (GRN)	16Y	141415-42-024	141415-42-075
CABLE ASM-GENERATOR GND (BLK)	16Y	133566-11-008	133566-11-008
LEVELING SYSTEM POWER CABLE (BLU)	60M	141415-22-010	141415-22-011



NOTES:  
 2 SEE LEVELING SYSTEM INSTL FOR ADDITIONAL INFORMATION.  
 1 ROUTING OF CABLES SHOWN ON WIRING INSTL-CHASSIS ONLY.

- 60M HYDRAULIC LEVEL JACKS-AUTO
- 644 GREAT ALASKAN RENTAL PACKAGE
- 22W BATTERY-SECOND
- 12X BATTERY-ONE
- 1PY CHEVY CHASSIS 14,050 LB GVWR
- 16Y FORD CHASSIS - 14,500#
- 16C FORD CHASSIS 11,500 LB.GVWR
- 16B FORD CHASSIS 10,700 LB.GVWR
- 265 CODES/STANDARDS-CSA/CMVSS
- 1B1 CODES/STANDARDS USA

1B1 265

COPYRIGHT 2006 WINNEBAGO INDUSTRIES, INC.

DFT	ORIG. DATE
CHKR	ALL DIMENSIONS ARE IN MILLIMETERS
P.E.	
M.E.	FIRST USED
DSNR	09 200/300/700 SER

UNSPECIFIED TOLERANCES ARE: MATERIAL:

WHOLE DIM (X)	:	
ONE-PLACE (X.X)	:	
TWO-PLACE (X.XX)	:	
ANGLE	:	

THIRD ANGLE PROJECTION

DO NOT SCALE DRAWING

TITLE: BATTERY INSTL

SHEET 1 of 4 PART NO 165490 REV

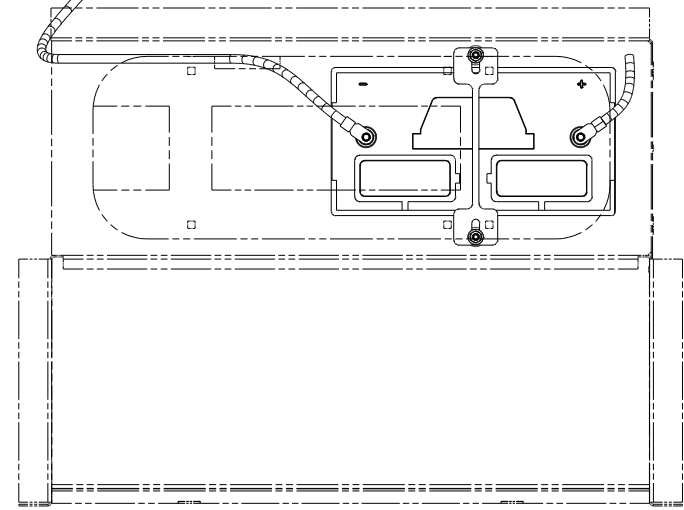
REF: 1 5/8/2008

FOR ELECTRICAL TORQUE SPECIFICATIONS SEE DWG NO. 128783-01-000

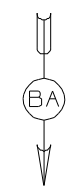
FOR ELECTRICAL CALLOUTS SEE DWG NO. 121339-01-000

BOLT  
C26-05-16B  
NUT  
D39-05-00B

TO GROUND BAR



VIEW BA



CABLE ASM-COACH  
BATTERY GND  
(BLK) 2

CABLE ASM-  
COACH BATTERY  
(YEL) 2

BATTERY  
63739-03-000  
TIE DOWN  
160014-03-CHT  
BOLT  
51387-06-000 (2)  
NUT  
D39-05-00B (2)  
CLIP  
44364-02-000 (2)

BATTERY BOX

- 12X BATTERY-ONE
- 265 CODES/STANDARDS-CSA/CMVSS
- 1B1 CODES/STANDARDS USA

1B1 265 12X

FIRST USED 09 200/300/700 SER

DO NOT SCALE DRAWING

TITLE: BATTERY INSTL

SHEET 2 PART NO 165490 REV

2 BATTERY CABLES ARE NOT TO BE ROUTED OVER BATTERY FILL CAPS.

1. SEE WIRING INSTL-CHASSIS FOR ADDITIONAL INFORMATION.

NOTES:

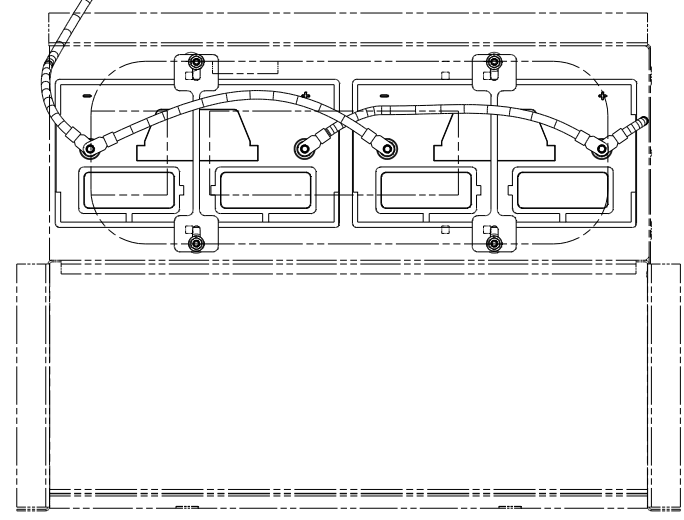
FOR ELECTRICAL  
TORQUE  
SPECIFICATIONS  
SEE DWG NO.  
128783-01-000

FOR  
ELECTRICAL  
CALLOUTS  
SEE DWG NO.  
121339-01-000

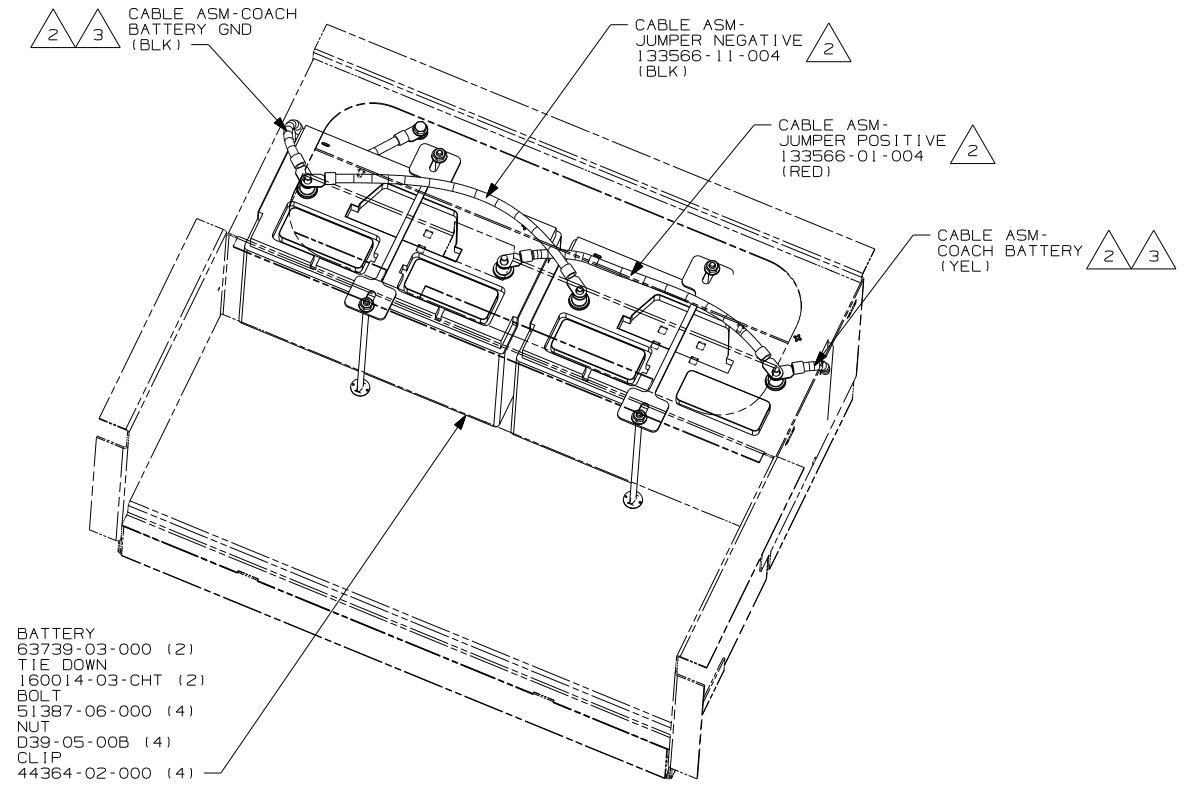


BOLT  
C26-05-16B  
NUT  
D39-05-00B

TO GROUND BAR



VIEW CA



BATTERY  
63739-03-000 (2)  
TIE DOWN  
160014-03-CHT (2)  
BOLT  
51387-06-000 (4)  
NUT  
D39-05-00B (4)  
CLIP  
44364-02-000 (4)

BATTERY BOX

- THE POSITIVE AND NEGATIVE BATTERY CABLES ARE TO BE TERMINATED ON OPPOSITE BATTERIES.
- BATTERY CABLES ARE NOT TO BE ROUTED OVER BATTERY FILL CAPS.

NOTES:  
1. SEE WIRING INSTL-CHASSIS FOR ADDITIONAL INFORMATION.

BATTERY - SECOND  
 CODES/STANDARDS - CSA/CMVSS  
 CODES/STANDARDS USA

FIRST USED  
09 200/300/700 SER

DO NOT SCALE DRAWING

TITLE: BATTERY INSTL

SHEET 3 PART NO 165490 REV

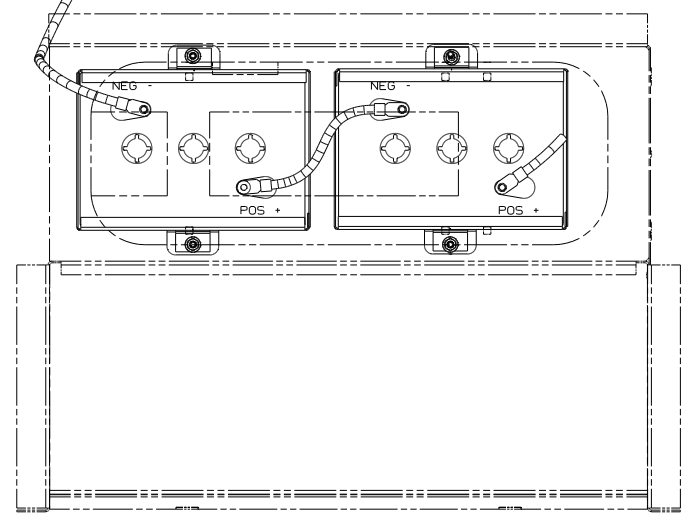
FOR ELECTRICAL TORQUE SPECIFICATIONS SEE DWG NO. 128783-01-000

FOR ELECTRICAL CALLOUTS SEE DWG NO. 121339-01-000



BOLT  
C26-05-16B  
NUT  
D39-05-00B

TO GROUND BAR



VIEW DA

CABLE ASM-COACH  
BATTERY GND  
(BLK)

CABLE ASM-JUMPER  
133566-01-002  
(RED)

CABLE ASM-  
COACH BATTERY  
(YEL)

BATTERY  
146110-01-000 (2)  
TIE DOWN ASM-BATTERY  
146624-01-CHT (2)  
BOLT  
51387-06-000 (4)  
NUT  
D39-05-00B (4)  
CLIP  
44364-02-000 (4)

BATTERY BOX

BATTERY CABLES ARE NOT TO BE ROUTED OVER BATTERY FILL CAPS.

1. SEE WIRING INSTL-CHASSIS FOR ADDITIONAL INFORMATION.

NOTES:

FOR ELECTRICAL  
TORQUE  
SPECIFICATIONS  
SEE DWG NO.  
128783-01-000

FOR  
ELECTRICAL  
CALLOUTS  
SEE DWG NO.  
121339-01-000

GREAT ALASKAN RENTAL PACKAGE  
 CODES/STANDARDS-CSA/CMVSS  
 CODES/STANDARDS USA

FIRST USED  
09 200/300/700 SER

DO NOT SCALE DRAWING

TITLE:  
BATTERY INSTL

SHEET 4 PART NO 165490 REV