



DANGER

Danger of electrical shock, burns or death. Always remove all power sources before attempting any repair, service or diagnostic work. Power can be present from shore power, generator, inverter or battery. All power sources must be disabled and secured before performing any service.



CAUTION

If you lack the skills, tools or equipment to perform diagnostic or repair work leave such work to an authorized Winnebago Industries dealer or other qualified shop.

DRAWING NO.	FEATURE
167949-12	1B1 78J
167949-16	265 78J

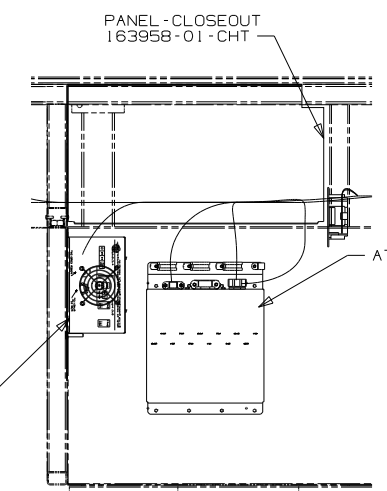
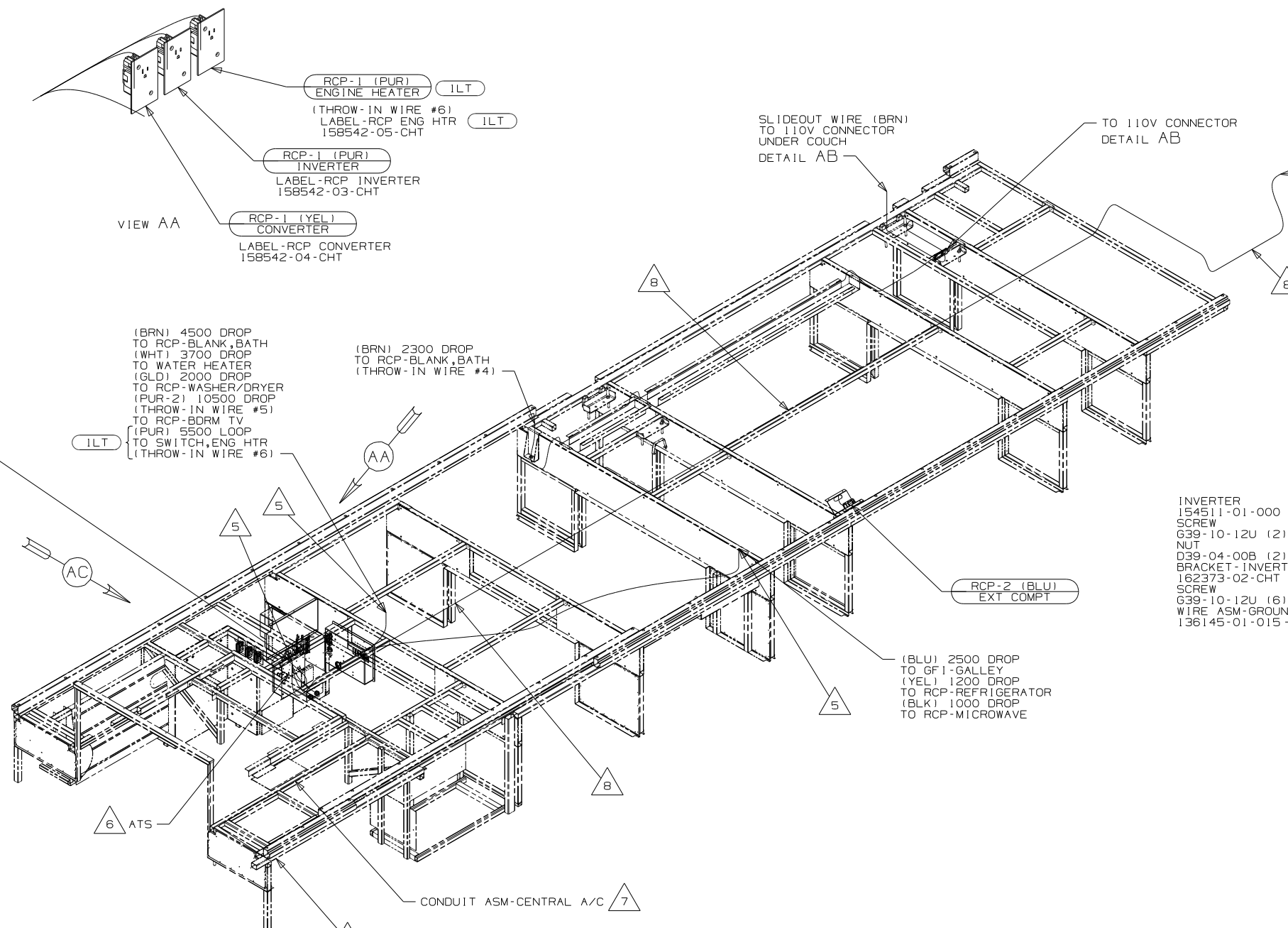
RELEASE	REV/DATE	DWG NO
	A	167949
REV ZONE	REVISION RECORD	DATE
		DFTR-016

(MAIN) 1000 DROP TO LOAD CENTER
 (RED) 1000 DROP TO LOAD CENTER
 (GRN) 1000 DROP TO LOAD CENTER
 (YEL) 1000 DROP TO EMS
 (YEL-2) 1000 DROP TO EMS
 (BLK) 1000 DROP TO LOAD CENTER
 (BLU) 1300 DROP THRU RCP-BLANK, BED TO LOAD CENTER
 (BRN) 2000 DROP THRU GF1, BED TO LOAD CENTER
 (PUR) 1000 DROP TO LOAD CENTER
 (WHT) 1000 DROP TO EMS
 (GLD) 1000 DROP TO LOAD CENTER

(BRN) 4500 DROP TO RCP-BLANK, BATH
 (WHT) 3700 DROP TO WATER HEATER
 (GLD) 2000 DROP TO RCP-WASHER/DRYER
 (PUR-2) 10500 DROP (THROW-IN WIRE #5) TO RCP-BDRM TV
 (PUR) 5500 LOOP TO SWITCH, ENG HTR (THROW-IN WIRE #6)

(BRN) 2300 DROP TO RCP-BLANK, BATH (THROW-IN WIRE #4)

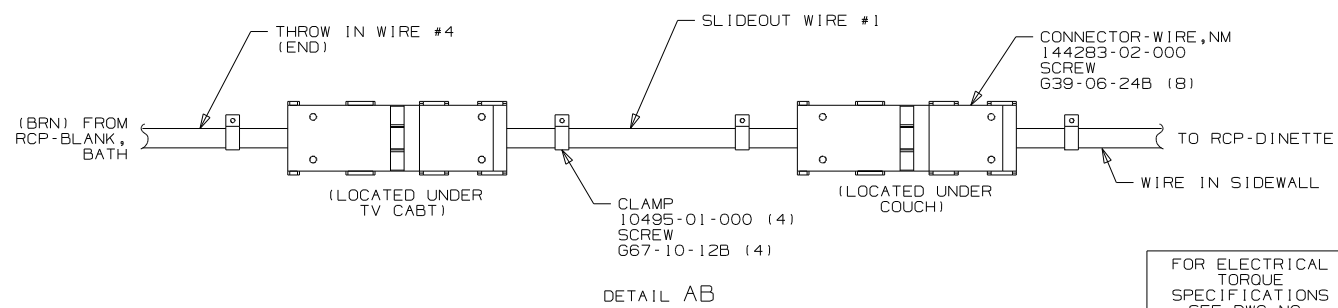
(BLU) 2500 DROP TO GF1-GALLEY
 (YEL) 1200 DROP TO RCP-REFRIGERATOR
 (BLK) 1000 DROP TO RCP-MICROWAVE



INVERTER
 154511-01-000
 SCREW
 639-10-12U (2)
 NUT
 D39-04-00B (2)
 BRACKET-INVERTER
 162373-02-CHT
 SCREW
 639-10-12U (6)
 WIRE ASM-GROUND
 136145-01-015

- 1LT FRTL 27,910 340 6.7L 6 SPEED
- 78J ELECTRICAL SYSTEM-50 AMP
- 265 CODES/STANDARDS-CSA/CMVSS
- 1B1 CODES/STANDARDS USA

- 8 GENERATOR WIRE IS ROUTED ALONG CHASSIS FRAME RAIL.
 - 7 SEE A/C SYSTEM INSTL-COACH FOR ADDITIONAL INFORMATION.
 - 6 SEE LOAD CENTER/ATS ASM FOR ADDITIONAL INFORMATION.
 - 5 WIRE ROUTED THROUGH FLOOR AT THIS POINT.
 - 4 SEE GENERATOR INSTL FOR ADDITIONAL INFORMATION.
3. WIRES THAT REST ON TRAYS ARE TO BE TIED DOWN WITH WIRE TIE 8343-04-000.
 2. CLAMP TO FLOOR SUPPORT TUBES AS NECESSARY WITH CLAMP 10497-01-000.
 1. ALL WIRES TO BE SECURED WITH CLAMP 10495 OR 10497 OR WIRE TIE 8343 OR 108046 EVERY 600MM, USE SCREW 667-XX-XXX OR 656-XX-XXX AS APPROPRIATE FOR INSTL.



FOR ELECTRICAL TORQUE SPECIFICATIONS SEE DWG NO. 128783-01-000

FOR ELECTRICAL CALLOUTS SEE DWG NO. 121339-01-000

1B1 265 78J

WINNEBAGO COPYRIGHT 2008 WINNEBAGO INDUSTRIES, INC.

DFTR	ORIG. DATE
CHKR	ALL DIMENSIONS ARE IN MILLIMETERS
P.E.	FIRST USED
M.E.	09 M37G
DSNR	

UNSPECIFIED TOLERANCES ARE:
 WHOLE DIM (X) : 3
 ONE-PLACE (X.X) : 1.5
 TWO-PLACE (X.XX) : 0.50
 ANGLE : 1°

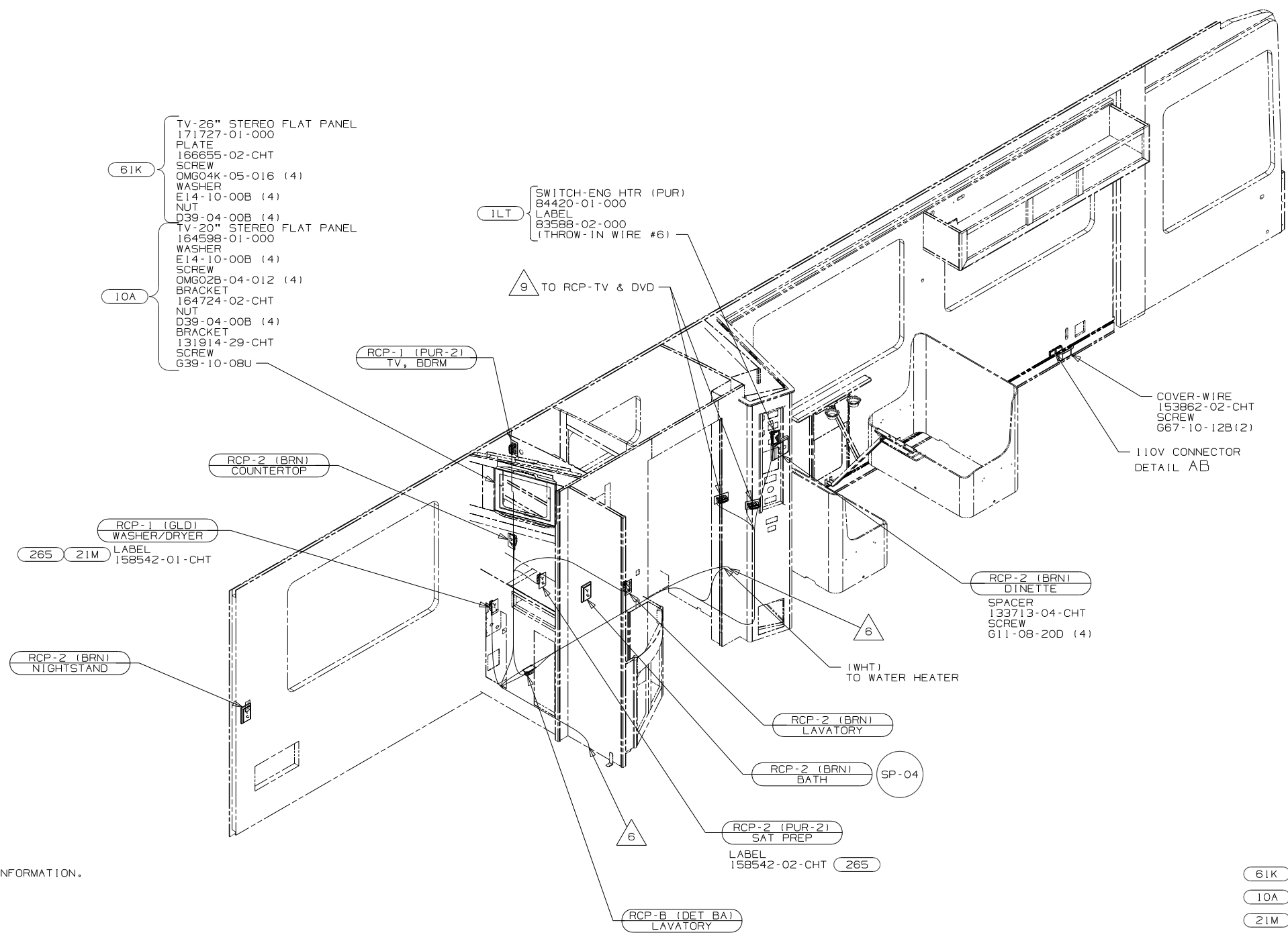
THIRD ANGLE PROJECTION

DO NOT SCALE DRAWING

TITLE: WIRING INSTL-BODY, 110V

SHEET 1 OF 3 PART NO 167949 REV

REF: 1 10/15/2008



- 10 USE SCREWS SUPPLIED WITH TV STAND TO MOUNT BRACKET TO TV.
- 9 SEE WIRING INSTL-TV/DVD,SIDE FOR ADDITIONAL INFORMATION.
- 8 WIRE IN ROOF.
- 7 WIRE IN SIDEWALL.
- 6 WIRE ROUTED THROUGH FLOOR AT THIS POINT.
- 5 SEE LOAD CENTER/ATS ASM FOR ADDITIONAL INFORMATION.
4. SEE WIRING DIAGRAM-BODY,110V FOR ADDITIONAL INFORMATION.
3. ALL GROUND WIRE TO COVERED WITH TUBING 8041-02-000.
2. ALL 110V WIRE TO BE CLAMPED WITH CLAMP 10497-05-000 WITHIN 200MM OF OUTLET BOXES, USE SCREW G67-10-12B.
1. ALL WIRES TO BE SECURED WITH CLAMP 10495-01-000 OR CLIP 80734-01-000 EVERY 600MM. USE SCREW G67-10-12B UNLESS OTHERWISE SPECIFIED.

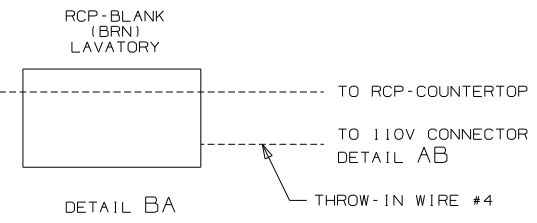
NOTES:

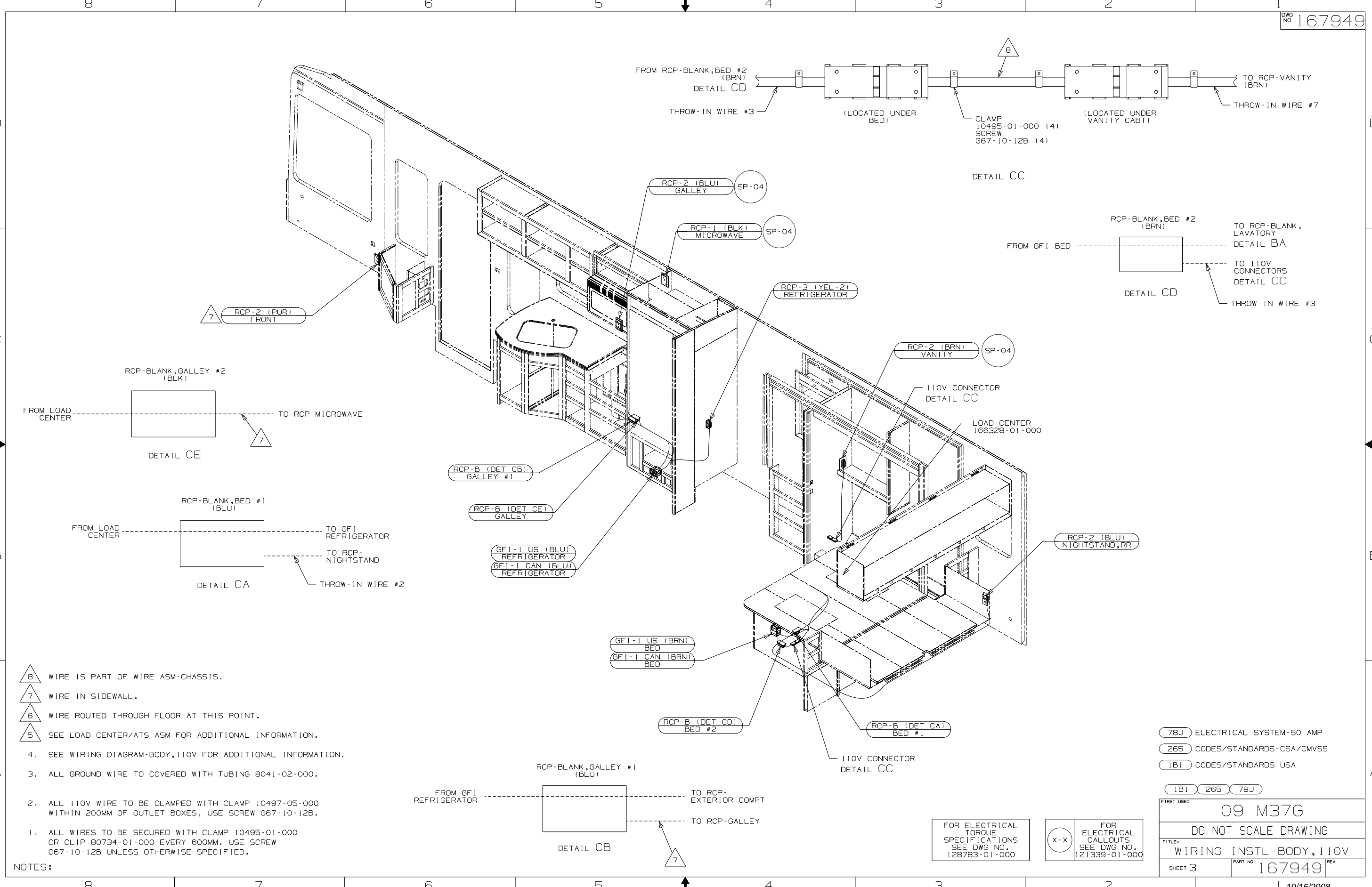
- 61K TV (REAR)-26" COLOR STEREO
- 10A TV (REAR)-20"COLOR, STEREO
- 21M WASHER/DRYER PREP
- 1LT FRTL 27,910 340 6.7L 6 SPEED
- 78J ELECTRICAL SYSTEM-50 AMP
- 265 CODES/STANDARDS-CSA/CMVSS
- 1B1 CODES/STANDARDS USA

FIRST USED	
09 M37G	
DO NOT SCALE DRAWING	
TITLE:	
WIRING INSTL-BODY, 110V	
SHEET 2	PART NO 167949 REV

FOR ELECTRICAL TORQUE SPECIFICATIONS SEE DWG NO. 128783-01-000

FOR ELECTRICAL CALLOUTS SEE DWG NO. 121339-01-000





- 8 WIRE IS PART OF WIRE ASM-CHASSIS.
 7 WIRE IN SIDEWALL.
 6 WIRE ROUTED THROUGH FLOOR AT THIS POINT.
 5 SEE LOAD CENTER/ATS ASM FOR ADDITIONAL INFORMATION.
 4. SEE WIRING DIAGRAM-BODY,110V FOR ADDITIONAL INFORMATION.
 3. ALL GROUND WIRE TO COVERED WITH TUBING 8041-02-000.
 2. ALL 110V WIRE TO BE CLAMPED WITH CLAMP 10497-05-000 WITHIN 200MM OF OUTLET BOXES, USE SCREW G67-10-12B.
 1. ALL WIRES TO BE SECURED WITH CLAMP 10495-01-000 OR CLIP 80734-01-000 EVERY 600MM. USE SCREW G67-10-12B UNLESS OTHERWISE SPECIFIED.

NOTES:

- (78J) ELECTRICAL SYSTEM-50 AMP
- (265) CODES/STANDARDS-CSA/CMVSS
- (1B1) CODES/STANDARDS USA

(1B1) (265) (78J)

FIRST USED	
09 M37G	
DO NOT SCALE DRAWING	
TITLE:	
WIRING INSTL-BODY,110V	
SHEET 3	PART NO 167949 REV

FOR ELECTRICAL TORQUE SPECIFICATIONS SEE DWG NO. 128783-01-000

X-X FOR ELECTRICAL CALLOUTS SEE DWG NO. 121339-01-000