



**DANGER**

**Danger of electrical shock, burns or death.** Always remove all power sources before attempting any repair, service or diagnostic work. Power can be present from shore power, generator, inverter or battery. All power sources must be disabled and secured before performing any service.

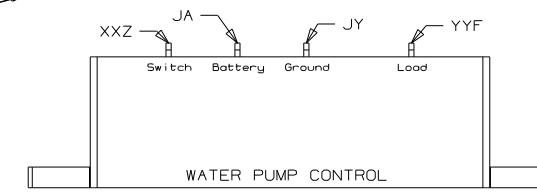
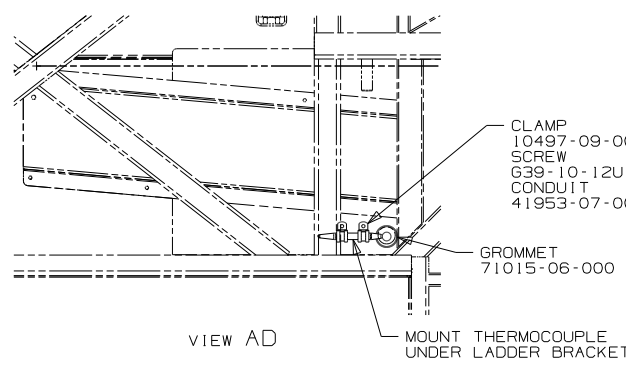
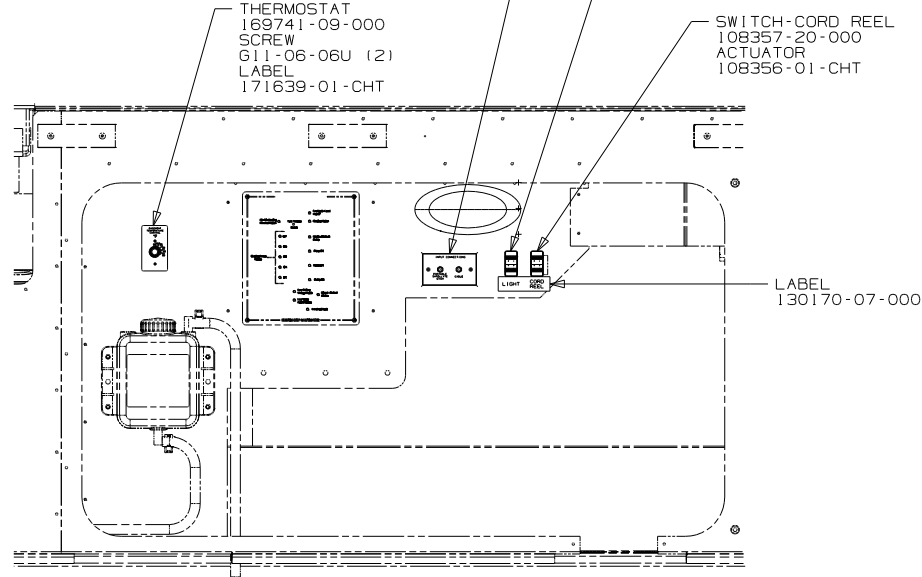
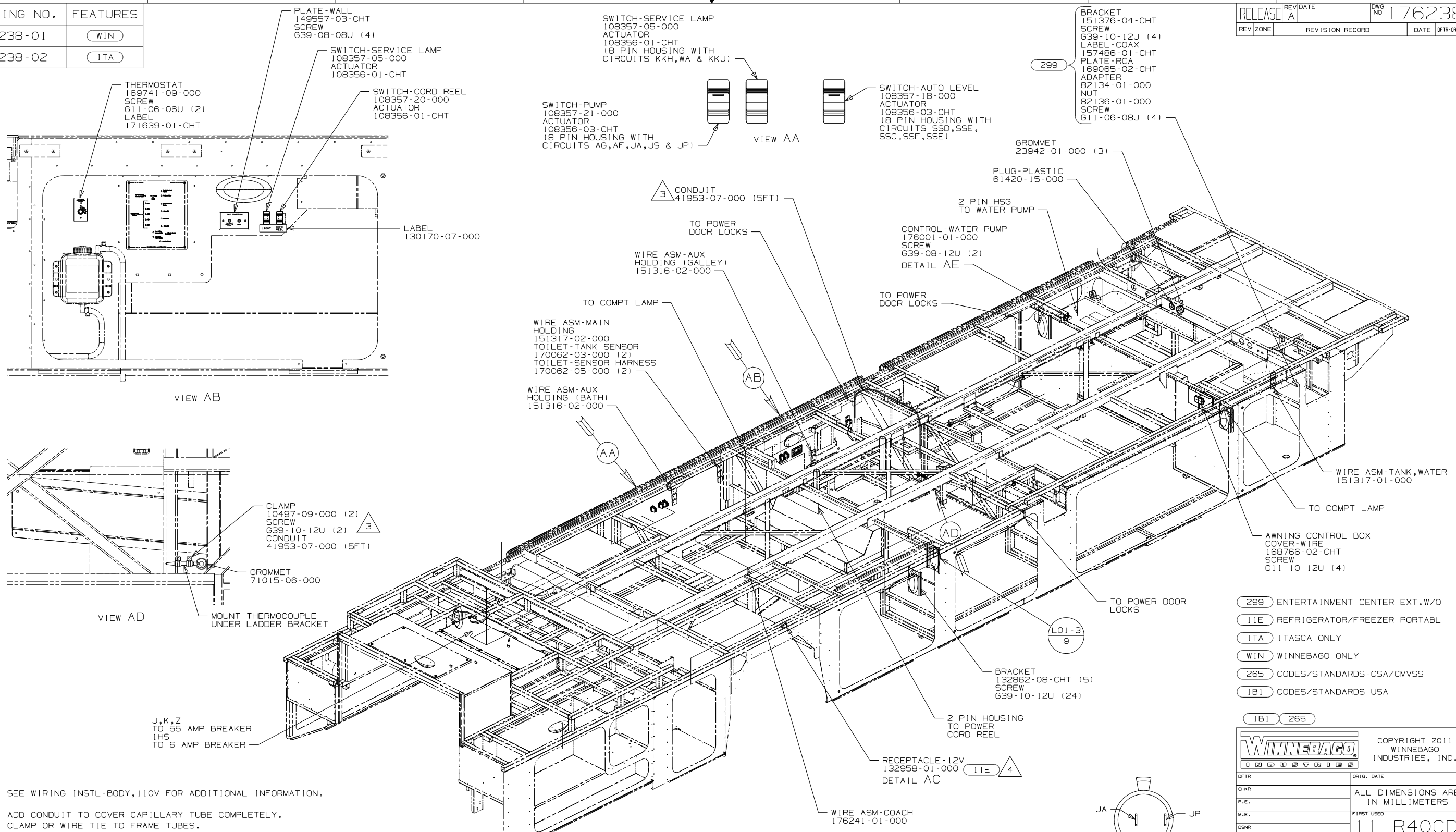


**CAUTION**

If you lack the skills, tools or equipment to perform diagnostic or repair work leave such work to an authorized Winnebago Industries dealer or other qualified shop.

DRAWING NO.	FEATURES
176238-01	(WIN)
176238-02	(ITA)

RELEASE	REV/DATE	DWG NO
	A	176238
REV ZONE	REVISION RECORD	DATE
		DFTR-016



- (299) ENTERTAINMENT CENTER EXT. W/O
- (11E) REFRIGERATOR/FREEZER PORTABL
- (ITA) ITASCA ONLY
- (WIN) WINNEBAGO ONLY
- (265) CODES/STANDARDS-CSA/CMVSS
- (1B1) CODES/STANDARDS USA

**WINNEBAGO** INDUSTRIES, INC. COPYRIGHT 2011

DFTR	ORIG. DATE
CHKR	ALL DIMENSIONS ARE IN MILLIMETERS
P.E.	FIRST USED
M.E.	11 R40CD
DSNR	

UNSPECIFIED TOLERANCES ARE: MATERIAL:

WHOLE DIM (X)	: 3
ONE-PLACE (X.X)	: 1.5
TWO-PLACE (X.XX)	: 0.50
ANGLE	: 1°

THIRD ANGLE PROJECTION

**DO NOT SCALE DRAWING**

TITLE: WIRING INSTL-BODY, 12V

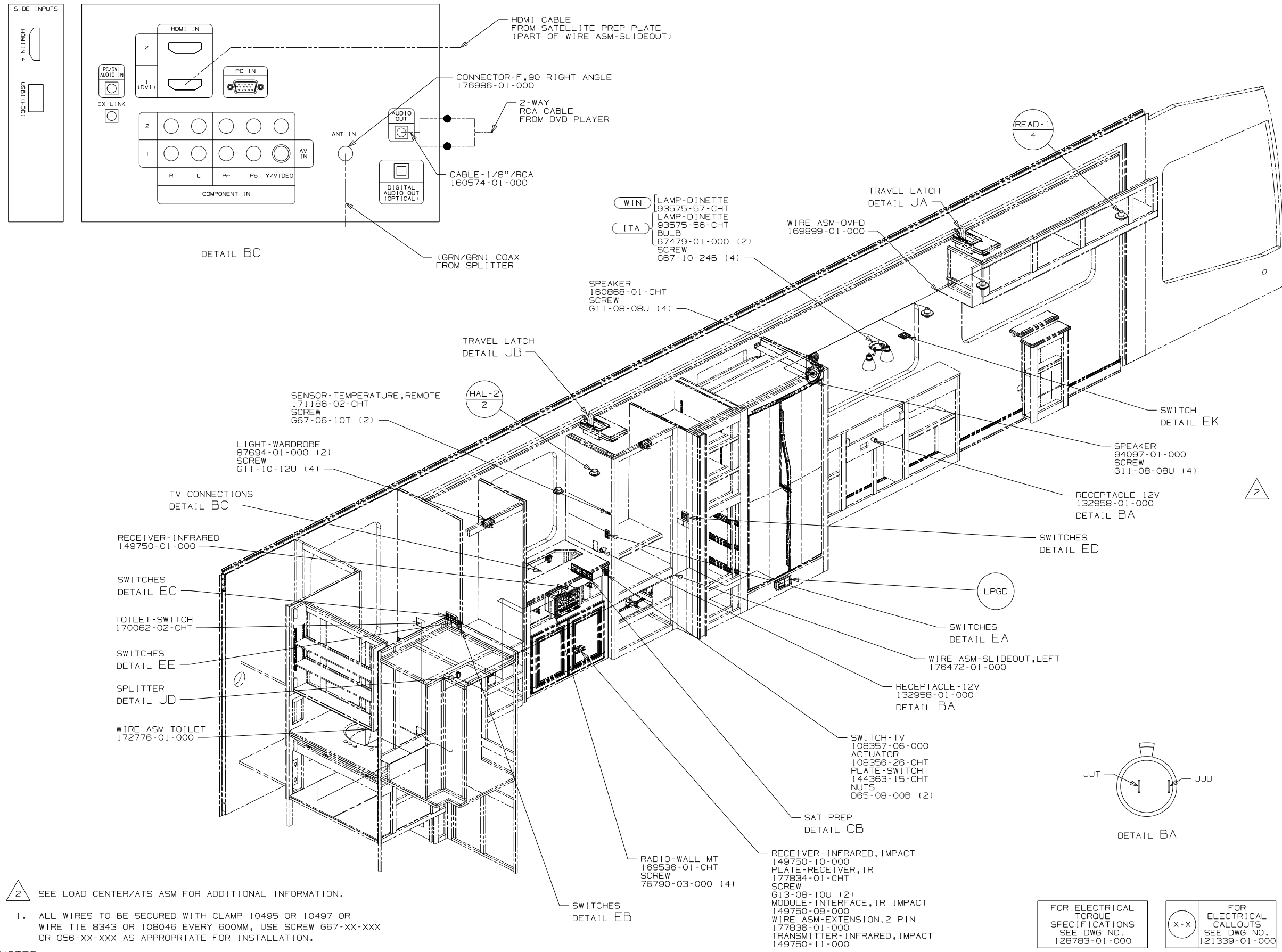
SHEET 1 of 9 PART NO 176238 REV

REF: 1 1/17/2011

- 4 SEE WIRING INSTL-BODY, 110V FOR ADDITIONAL INFORMATION.
- 3 ADD CONDUIT TO COVER CAPILLARY TUBE COMPLETELY. CLAMP OR WIRE TIE TO FRAME TUBES.
2. ROUTE TANK SENSOR WIRES SO THEY DO NOT PASS OVER SENSORS. USE WIRE TIE MOUNT 155366-01-000 AND WIRE TIE 8343-01-000 AS NEEDED. TANK SURFACE MUST BE CLEANED USING ISOPROPYL ALCOHOL AND PRIMED WITH PRIMER 94.
1. ALL WIRES TO BE SECURED WITH CLAMP 10495 OR 10497 OR WIRE TIE 8343 OR 108046 EVERY 600MM, USE SCREW G67-XX-XXX OR G56-XX-XXX AS APPROPRIATE FOR INSTALLATION.

FOR ELECTRICAL TORQUE SPECIFICATIONS SEE DWG NO. 128783-01-000

(X-X) FOR ELECTRICAL CALLOUTS SEE DWG NO. 121339-01-000



NOTES:

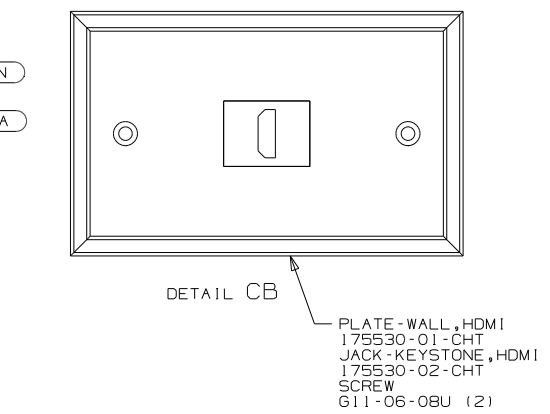
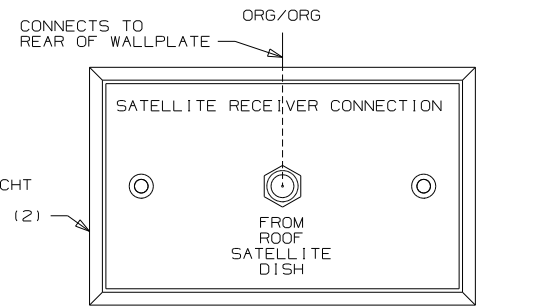
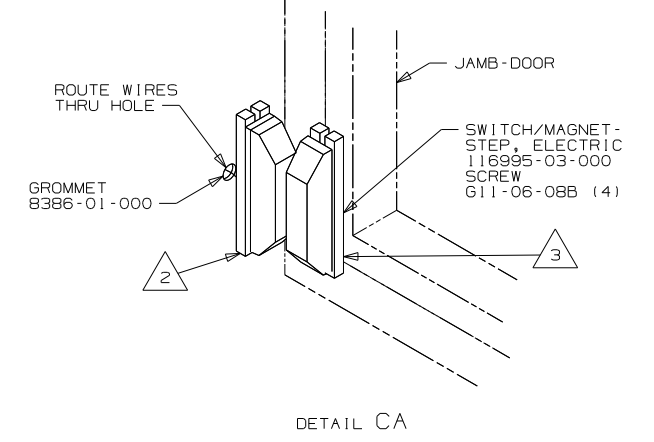
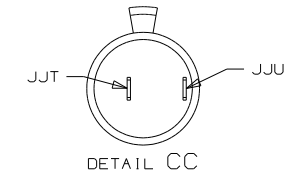
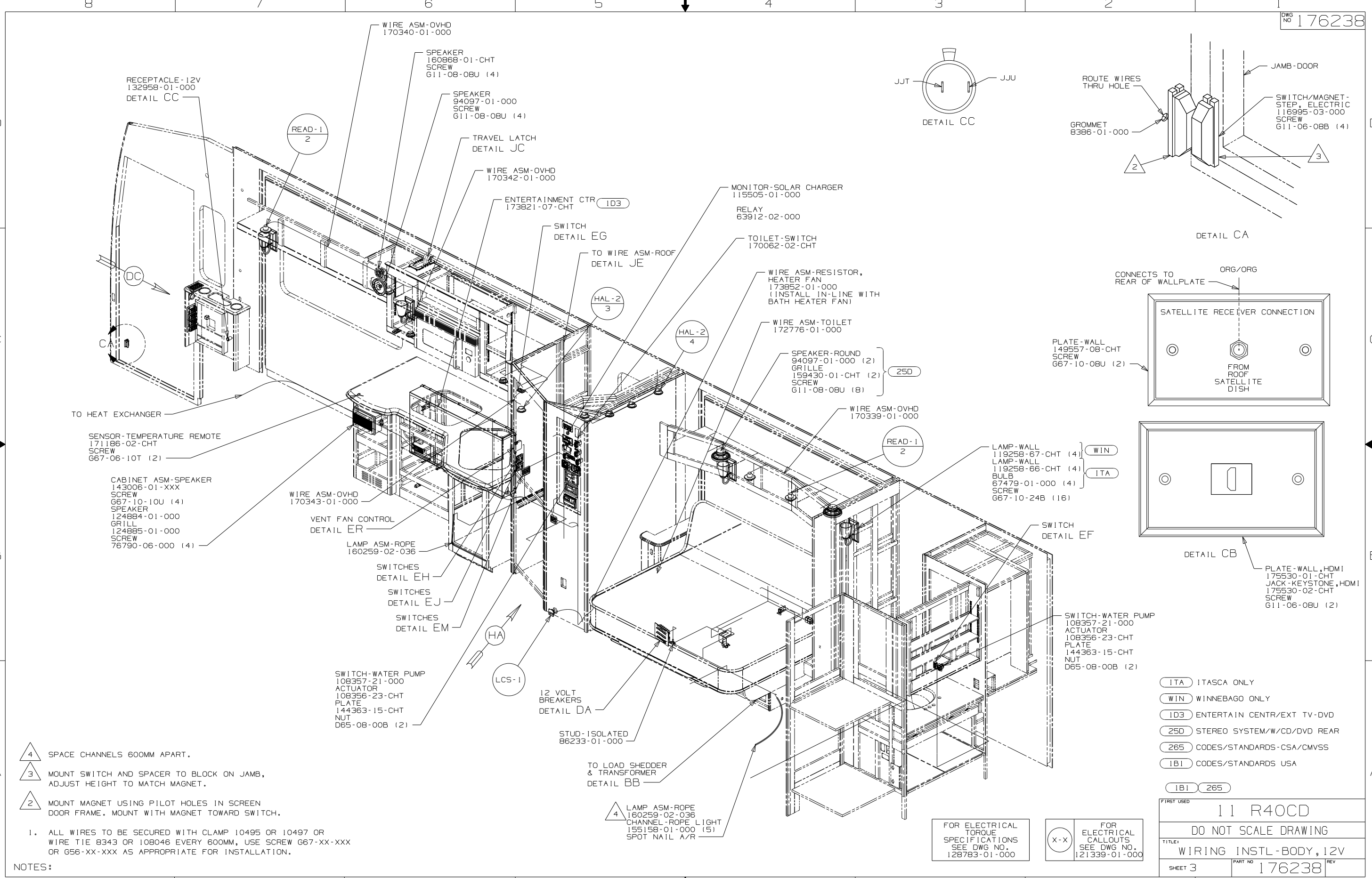
1. ALL WIRES TO BE SECURED WITH CLAMP 10495 OR 10497 OR WIRE TIE 8343 OR 108046 EVERY 600MM, USE SCREW G67-XX-XXX OR G56-XX-XXX AS APPROPRIATE FOR INSTALLATION.

FOR ELECTRICAL TORQUE SPECIFICATIONS SEE DWG NO. 128783-01-000

FOR ELECTRICAL CALLOUTS SEE DWG NO. 121339-01-000

- (ITA) ITASCA ONLY
- (WIN) WINNEBAGO ONLY
- (265) CODES/STANDARDS-CSA/CMVSS
- (IB1) CODES/STANDARDS USA

FIRST USED	
11 R40CD	
DO NOT SCALE DRAWING	
TITLE:	
WIRING INSTL-BODY, 12V	
SHEET 2	PART NO 176238 REV



- 4 SPACE CHANNELS 600MM APART.
- 3 MOUNT SWITCH AND SPACER TO BLOCK ON JAMB, ADJUST HEIGHT TO MATCH MAGNET.
- 2 MOUNT MAGNET USING PILOT HOLES IN SCREEN DOOR FRAME. MOUNT WITH MAGNET TOWARD SWITCH.

1. ALL WIRES TO BE SECURED WITH CLAMP 10495 OR 10497 OR WIRE TIE 8343 OR 108046 EVERY 600MM, USE SCREW G67-XX-XXX OR G56-XX-XXX AS APPROPRIATE FOR INSTALLATION.

NOTES:

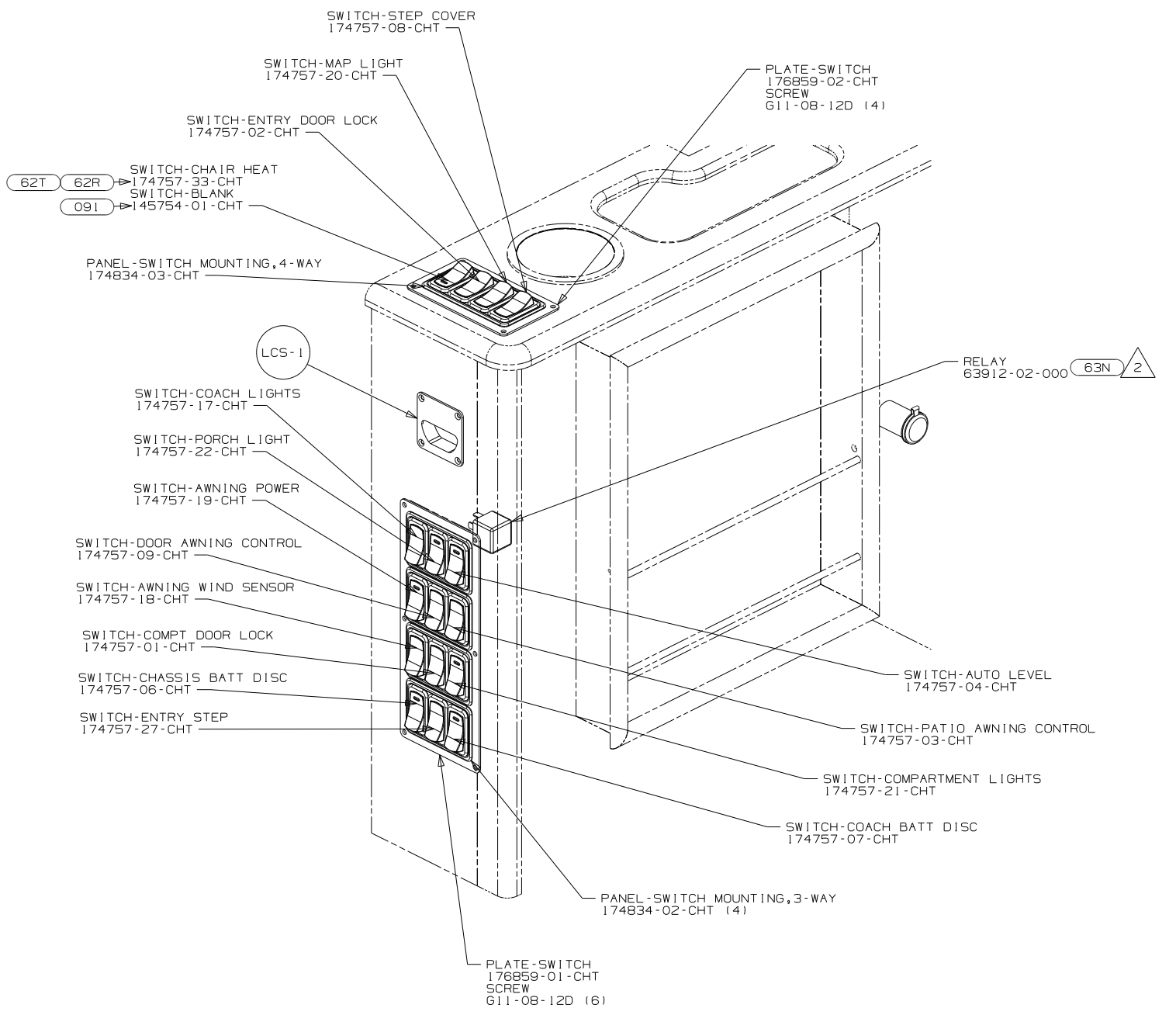
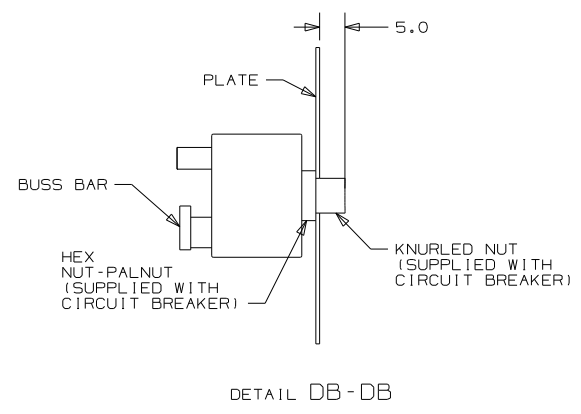
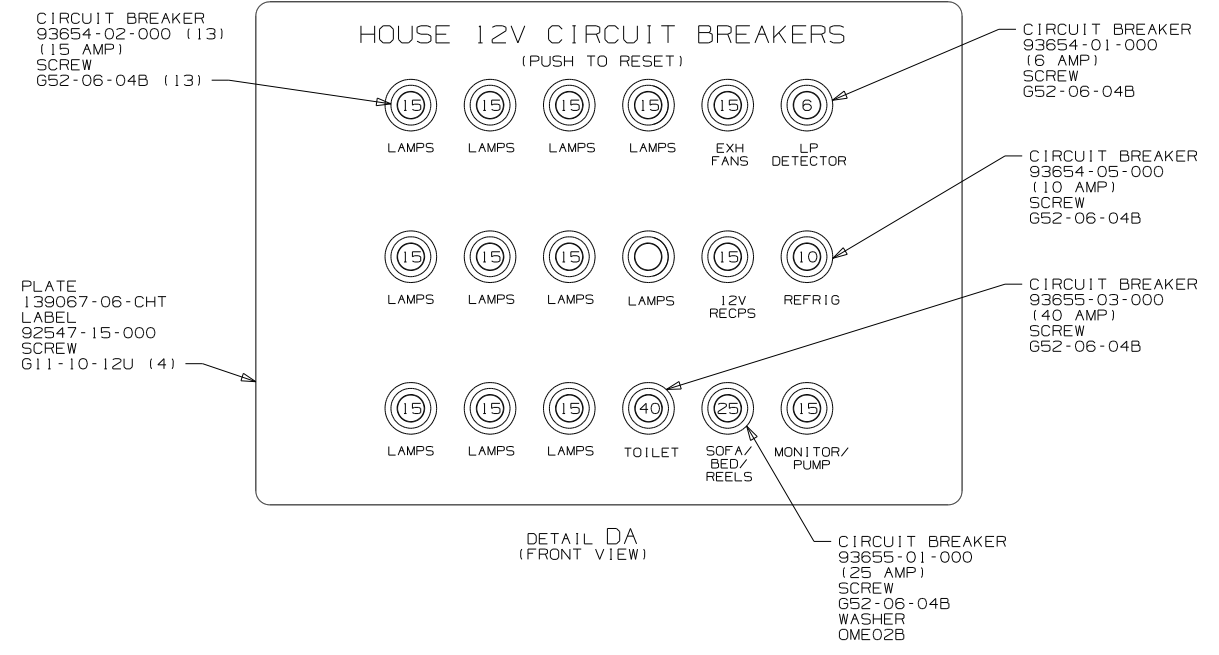
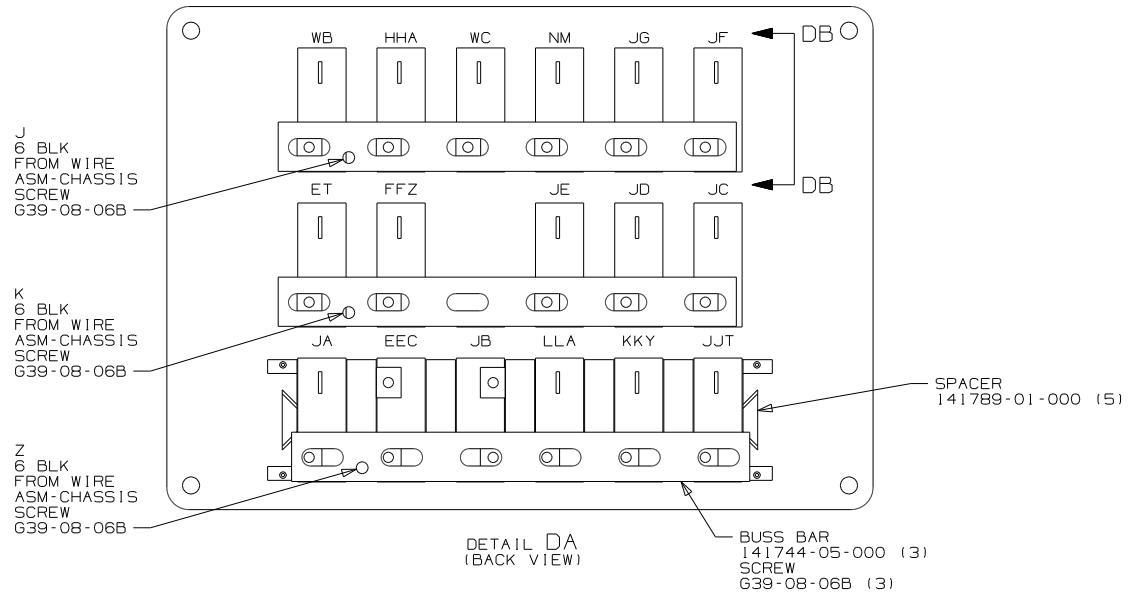
- (ITA) ITASCA ONLY
- (WIN) WINNEBAGO ONLY
- (ID3) ENTERTAIN CENTR/EXT TV-DVD
- (25D) STEREO SYSTEM/W/CD/DVD REAR
- (265) CODES/STANDARDS-CSA/CMVSS
- (1B1) CODES/STANDARDS USA

FIRST USED	11 R40CD
DO NOT SCALE DRAWING	
TITLE: WIRING INSTL-BODY, 12V	
SHEET 3	PART NO 176238
REV 1 1/17/2011	

FOR ELECTRICAL TORQUE SPECIFICATIONS SEE DWG NO. 128783-01-000

(X-X) FOR ELECTRICAL CALLOUTS SEE DWG NO. 121339-01-000

4 LAMP ASM-ROPE 160259-02-036 CHANNEL-ROPE LIGHT 155158-01-000 SPOT NAIL A/R



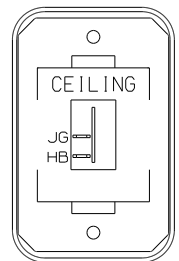
- 62T SEATS-CAB-HEATED
- 62R SEATS-W/QUEEN PASS.- HEATED
- 091 CAB SEATS-ULTRALEATHER
- 63N AWNING-ENTRY, ELECTRIC
- 265 CODES/STANDARDS-CSA/CMVSS
- 1B1 CODES/STANDARDS USA

FIRST USED	11 R40CD
TITLE	DO NOT SCALE DRAWING
	WIRING INSTL-BODY, 12V
SHEET 4	PART NO 176238 REV

FOR ELECTRICAL TORQUE SPECIFICATIONS SEE DWG NO. 128783-01-000

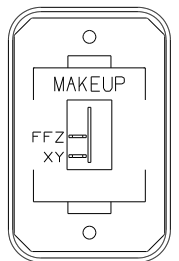
FOR ELECTRICAL CALLOUTS SEE DWG NO. 121339-01-000

NOTES:  
 1. ALL WIRES TO BE SECURED WITH CLAMP 10495 OR 10497 OR WIRE TIE 8343 OR 108046 EVERY 600MM, USE SCREW G67-XX-XXX OR G56-XX-XXX AS APPROPRIATE FOR INSTALLATION.



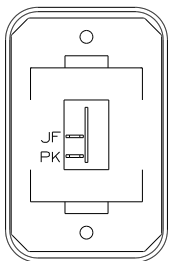
SWITCH-ROCKER  
135740-01-CHT  
SWITCH-BASE  
135741-01-CHT  
SWITCH-BEZEL  
135742-07-CHT  
SCREW  
G11-08-08U (2)

DETAIL EA



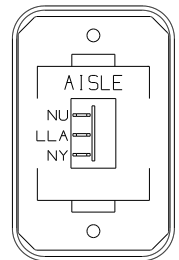
SWITCH-ROCKER  
135740-01-CHT  
SWITCH-BASE  
135741-01-CHT  
SWITCH-BEZEL  
135742-08-CHT  
SCREW  
G11-08-08U (2)

DETAIL EF



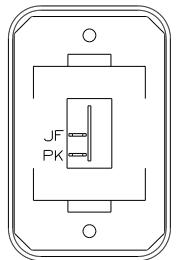
SWITCH-ROCKER  
135740-01-CHT  
SWITCH-BASE  
135741-01-CHT  
SWITCH-BEZEL  
135742-01-CHT  
SCREW  
G11-08-08U (2)

DETAIL EL



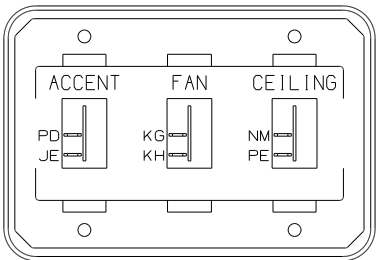
SWITCH-ROCKER  
135740-02-CHT  
SWITCH-BASE  
135741-01-CHT  
SWITCH-BEZEL  
135742-06-CHT  
SCREW  
G11-08-08U (2)

DETAIL EB



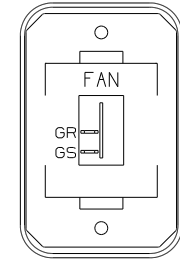
SWITCH-ROCKER  
135740-01-CHT  
SWITCH-BASE  
135741-01-CHT  
SWITCH-BEZEL  
135742-01-CHT  
SCREW  
G11-08-08U (2)

DETAIL EG



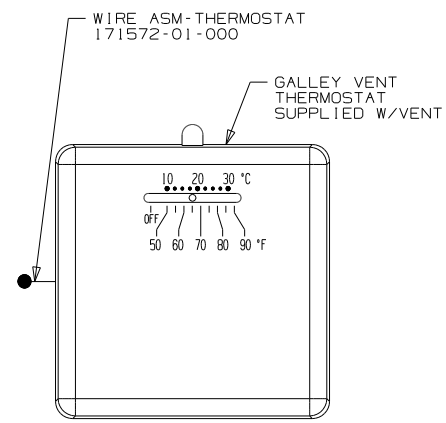
SWITCH-ROCKER  
135740-01-CHT (3)  
SWITCH-BASE  
135741-03-CHT  
SWITCH-BEZEL  
135742-48-CHT  
SCREW  
G11-08-08U (4)

DETAIL EM



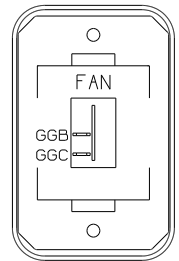
SWITCH-ROCKER  
135740-01-CHT  
SWITCH-BASE  
135741-01-CHT  
SWITCH-BEZEL  
135742-12-CHT  
SCREW  
G11-08-08U (2)

411



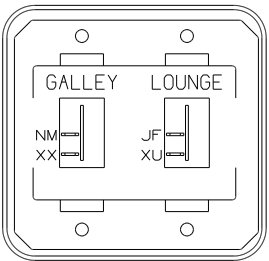
710

DETAIL ER



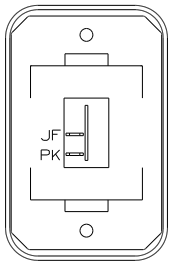
SWITCH-ROCKER  
135740-01-CHT  
SWITCH-BASE  
135741-01-CHT  
SWITCH-BEZEL  
135742-12-CHT  
SCREW  
G11-08-08U (2)

DETAIL EC



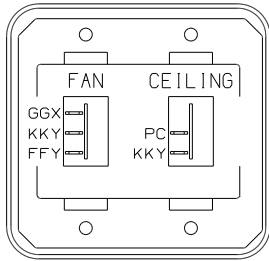
SWITCH-ROCKER  
135740-01-CHT (2)  
SWITCH-BASE  
135741-02-CHT  
SWITCH-BEZEL  
135742-18-CHT  
SCREW  
G11-08-08U (4)

DETAIL EH



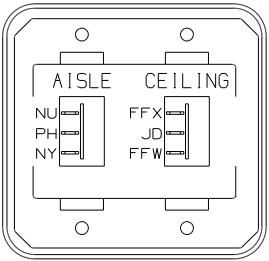
SWITCH-ROCKER  
135740-01-CHT  
SWITCH-BASE  
135741-01-CHT  
SWITCH-BEZEL  
135742-01-CHT  
SCREW  
G11-08-08U (2)

DETAIL EN



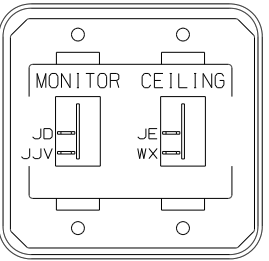
SWITCH-ROCKER  
135740-01-CHT  
135740-04-CHT  
SWITCH-BASE  
135741-02-CHT  
SWITCH-BEZEL  
135742-33-CHT  
SCREW  
G11-08-08U (4)  
RESISTOR-FAN  
140195-01-000

DETAIL ED



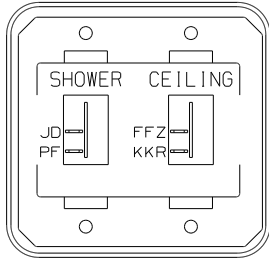
SWITCH-ROCKER  
135740-02-CHT (2)  
SWITCH-BASE  
135741-02-CHT  
SWITCH-BEZEL  
135742-13-CHT  
SCREW  
G11-08-08U (4)

DETAIL EJ



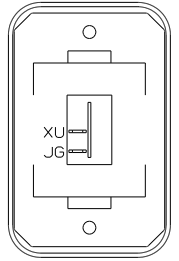
SWITCH-ROCKER  
135740-01-CHT (2)  
SWITCH-BASE  
135741-02-CHT  
SWITCH-BEZEL  
135742-31-CHT  
SCREW  
G11-08-08U (4)

DETAIL EP



SWITCH-ROCKER  
135740-01-CHT (2)  
SWITCH-BASE  
135741-02-CHT  
SWITCH-BEZEL  
135742-15-CHT  
SCREW  
G11-08-08U (4)

DETAIL EE



SWITCH-ROCKER  
135740-01-CHT  
SWITCH-BASE  
135741-01-CHT  
SWITCH-BEZEL  
135742-01-CHT  
SCREW  
G11-08-08U (2)

DETAIL EK

CONNECT WIRE ASM-RESISTOR,FAN TO 2-PIN HOUSING LOCATED BY THE SWITCH WIRES.

NOTES:

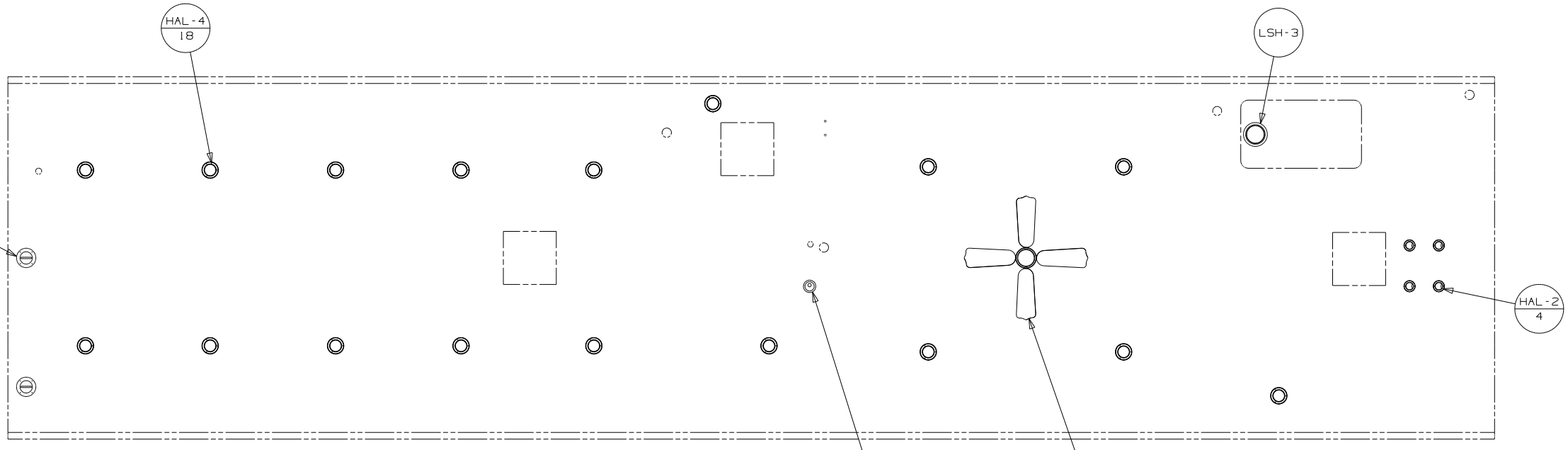
FOR ELECTRICAL TORQUE SPECIFICATIONS SEE DWG NO. 128783-01-000

FOR ELECTRICAL CALLOUTS SEE DWG NO. 121339-01-000

- 710 VENT ROOF-POWERED, INSULATED
- 411 VENTILATOR (2) POWER VENT
- 265 CODES/STANDARDS-CSA/CMVSS
- 1B1 CODES/STANDARDS USA

1B1 265

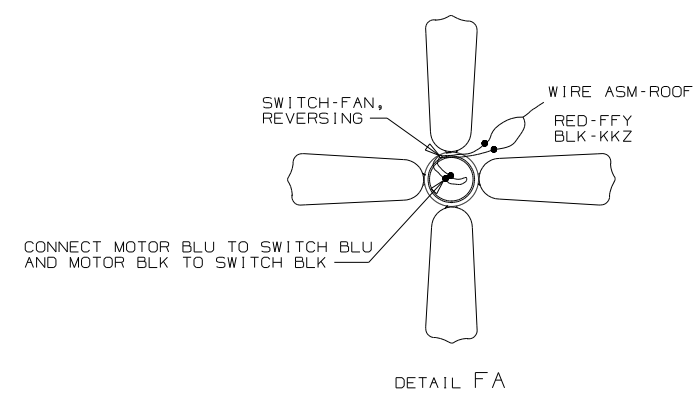
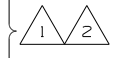
FIRST USED	11 R40CD
TITLE	DO NOT SCALE DRAWING
TITLE	WIRING INSTL-BODY, 12V
SHEET 5	PART NO 176238 REV



SPEAKER  
160867-01-CHT (2)  
SCREW  
G1208-12-170 (8)

LIGHT  
146048-01-000  
SCREW  
G11-08-16U (2)  
CONNECTOR  
58028-01-000 (2)

FAN  
139134-01-CHT  
SCREW  
G11-10-16B (3)  
CONNECTOR  
58028-01-000 (2)  
DETAIL FA



DETAIL FA

265 CODES/STANDARDS-CSA/CMVSS

1B1 CODES/STANDARDS USA

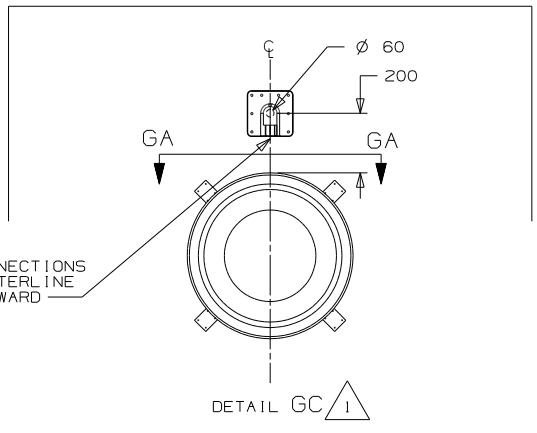
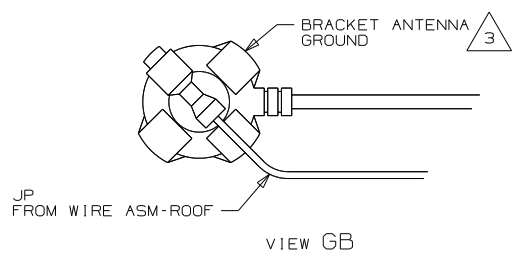
1B1 265

FIRST USED	11 R40CD
DO NOT SCALE DRAWING	
TITLE:	WIRING INSTL-BODY, 12V
SHEET 6	PART NO 176238 REV

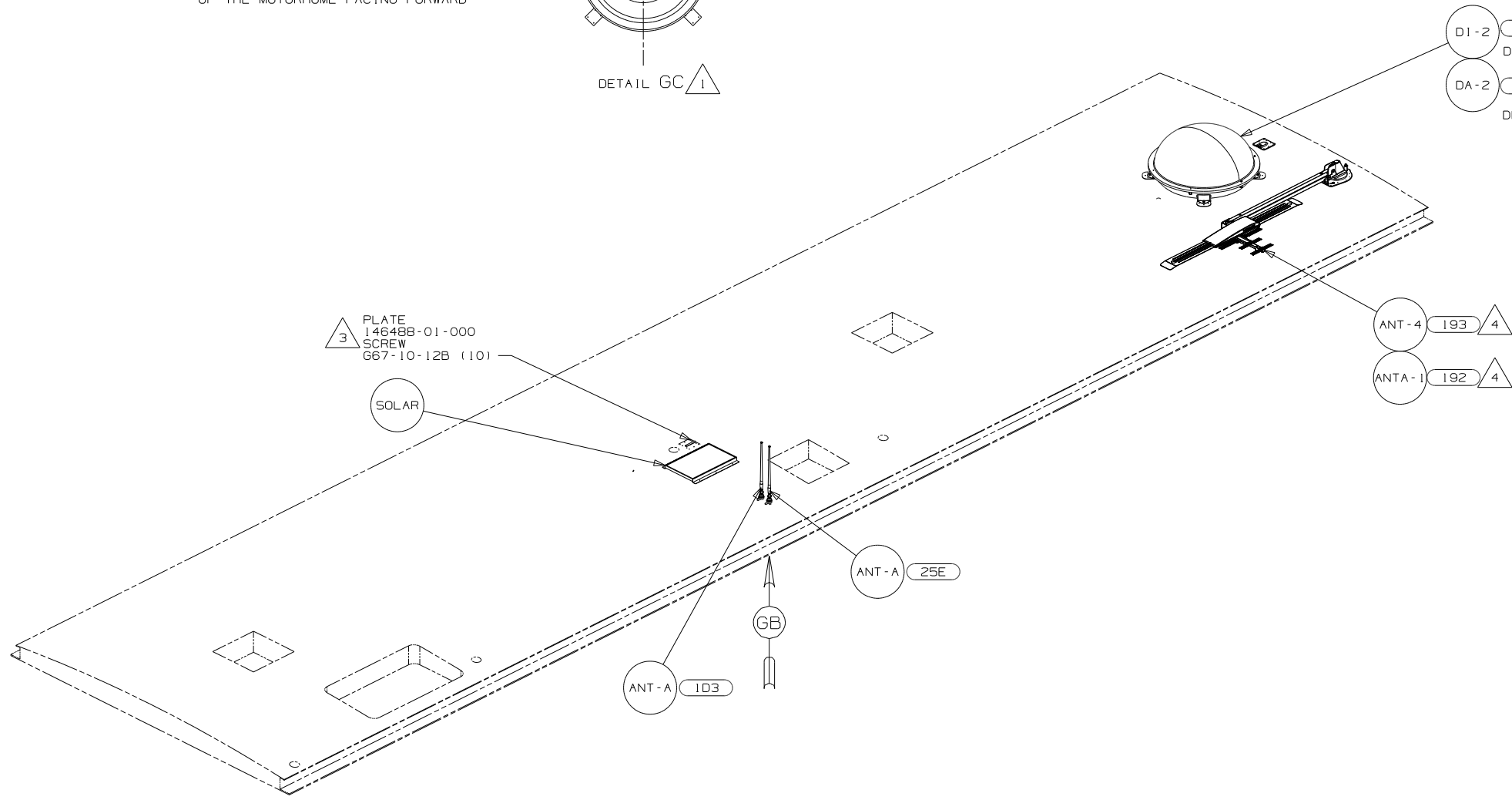
- NOTES:
- 2 CENTER FAN OVER 25MM HOLE IN ROOF.
  - 1 APPLY LOCTITE P/N 62917-06-000 TO FAN BLADE MOUNTING NUT THREADS.

FOR ELECTRICAL TORQUE SPECIFICATIONS SEE DWG NO. 128783-01-000

FOR ELECTRICAL CALLOUTS SEE DWG NO. 121339-01-000



THE SATELLITE DISH WIRE CONNECTIONS ARE TO BE PLACED ON THE CENTERLINE OF THE MOTORHOME FACING FORWARD



3 PLATE 146488-01-000  
SCREW 667-10-12B (10)

D1-2 48P 2  
DETAIL GC  
DA-2 7BK 2  
DETAIL GC

ANT-4 193 4  
ANTA-1 192 4

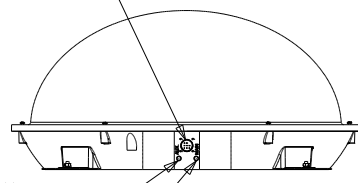
ANT-A 25E

ANT-A 1D3

CONNECT CABLE ASM SATELLITE CONTROL FROM ROOF ASM TO SATELLITE DISH HERE

CONNECT 9" CABLE ASM COAX (REAR TV ORG/ORG) FROM ROOF ASM TO AUX INPUT ON SATELLITE DISH

CONNECT 8" CABLE ASM COAX (FRONT TV ORG) FROM ROOF ASM TO MAIN INPUT ON SATELLITE DISH



FOR ELECTRICAL TORQUE SPECIFICATIONS SEE DWG NO. 128783-01-000

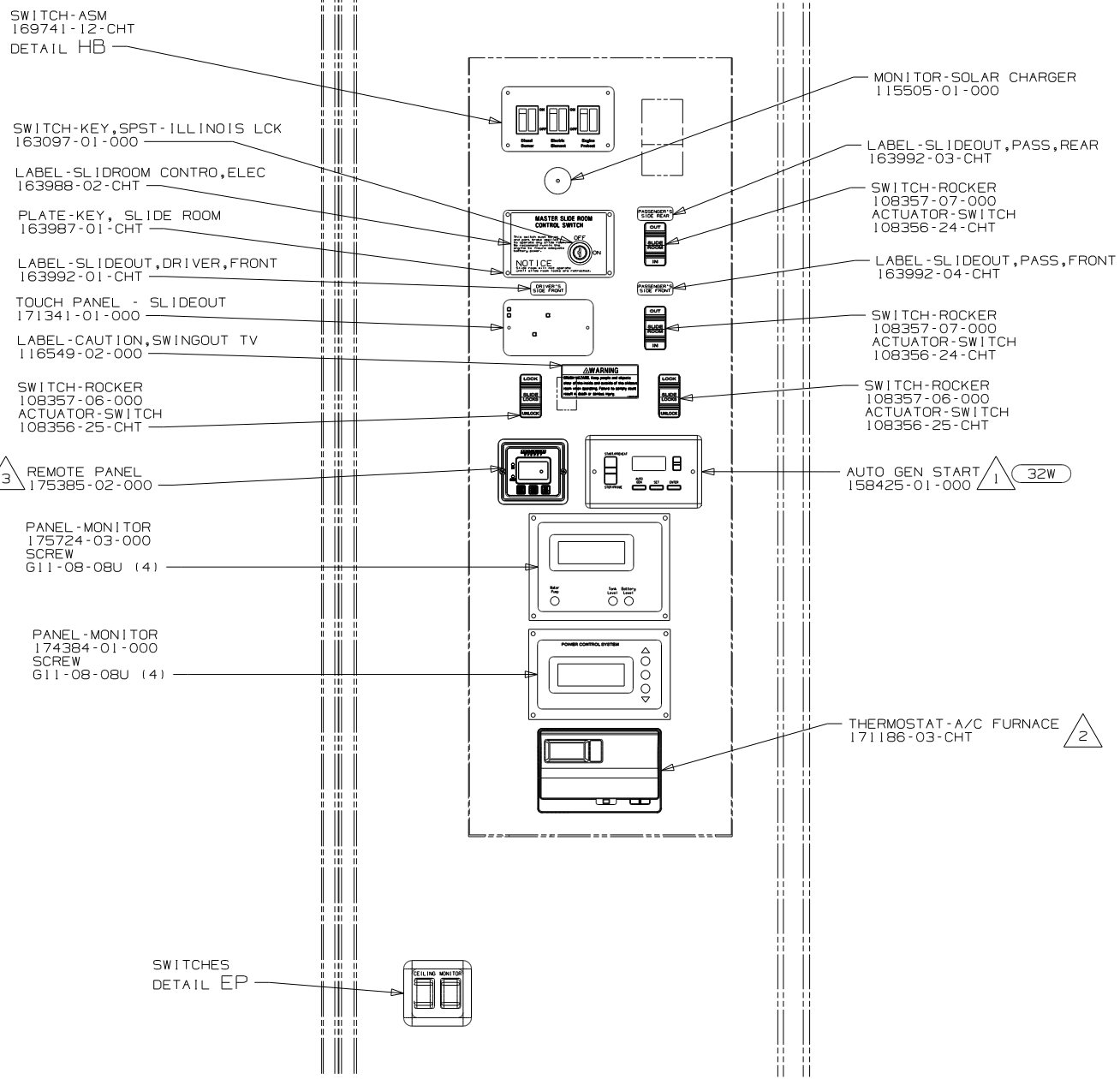
FOR ELECTRICAL CALLOUTS SEE DWG NO. 121339-01-000

- (7BK) SATELLITE DISH-AUTOMATIC
- (193) TV ANTENNA-AMPLIFIED SYSTEM
- (192) TV ANTENNA-AMPLIFIED SYS PWR
- (1D3) ENTERTAIN CENTR/EXT TV-DVD
- (48P) SAT TV SYSTEM IN-MOTION
- (25E) REAR STEREO SYSTEM W/CD
- (265) CODES/STANDARDS-CSA/CMVSS
- (1B1) CODES/STANDARDS USA

FIRST USED	11 R40CD
DO NOT SCALE DRAWING	
TITLE:	WIRING INSTL-BODY, 12V
SHEET 7	PART NO 176238 REV

- NOTES:
- 4 SEE ANTENNA INSTALLATION MANUAL FOR CORRECT INSTALLATION PROCEDURE.
  - 3 WRAP BRACKET LEGS AROUND ANTENNA BASE.
  - 2 SEE MANUFACTURER'S INSTALLATION FOR ADDITIONAL INFORMATION.
  - 1 CUT AND REMOVE SHIPPING STRAPS.



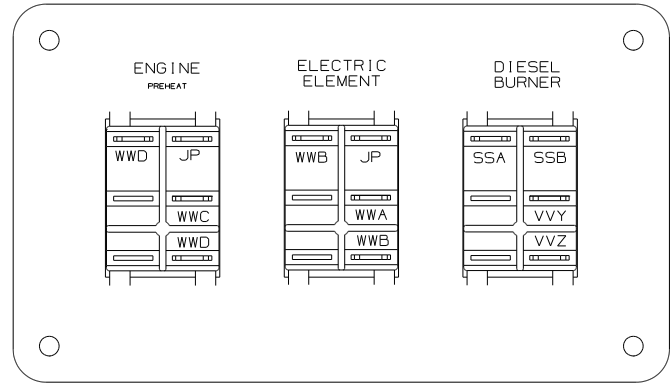


3

1

32W

2



DETAIL HB

DETAIL HA

- 3 SET 'BAT TYPE' TO 'AGM 2'.  
SET 'LBCO' TO '11 VDC'  
SEE OWNER'S MANUAL FOR SETUP PROCEDURE.
- 2 INSTALL GASKET ON BACK SIDE OF ONE PLACE AFTER  
INSTALLATION OF THERMOSTAT, MAKING SURE THAT THE  
GASKET COVERS AND SEALS THE HOLE THAT THE WIRES  
PASS THROUGH.
- 1 SET 'GEN TYPE' TO MATCH THE GENERATOR MODEL  
INSTALLED IN COACH. SET 'SAFE TYPE' TO 'IGNITION'.  
SEE OWNER'S MANUAL FOR SETUP PROCEDURE.

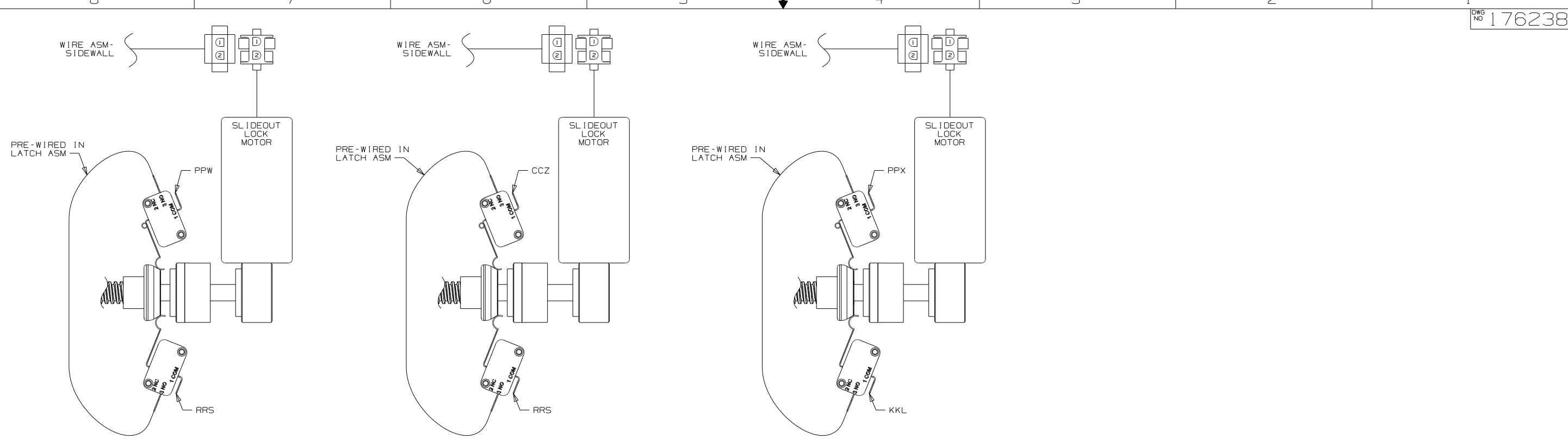
NOTES:

- 32W GENERATOR-START, AUTO SYSTEM
- 265 CODES/STANDARDS-CSA/CMVSS
- 1B1 CODES/STANDARDS USA

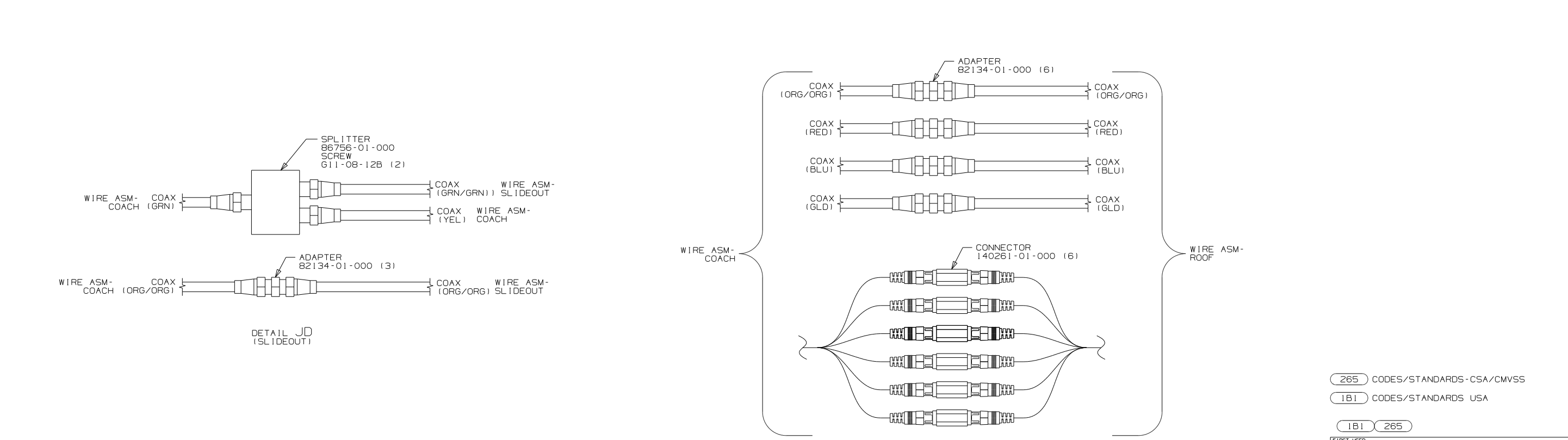
1B1 265	
FIRST USED	
11 R40CD	
DO NOT SCALE DRAWING	
TITLE:	
WIRING INSTL-BODY, 12V	
SHEET 8	PART NO 176238 REV

FOR ELECTRICAL  
TORQUE  
SPECIFICATIONS  
SEE DWG NO.  
128783-01-000

(X-X)  
FOR  
ELECTRICAL  
CALLOUTS  
SEE DWG NO.  
121339-01-000



DETAIL JA (LEFT SLIDEROOM FRONT LATCH)      DETAIL JB (LEFT SLIDEROOM REAR LATCH)      DETAIL JC (RIGHT SLIDEROOM LATCH)



DETAIL JD (SLIDEOUT)      BDRM STEREO      DETAIL JE (ROOF)

FOR ELECTRICAL TORQUE SPECIFICATIONS SEE DWG NO. 128783-01-000

FOR ELECTRICAL CALLOUTS SEE DWG NO. 121339-01-000

- 265 CODES/STANDARDS - CSA/CMVSS
- 1B1 CODES/STANDARDS USA
- 1B1 265

FIRST USED	
11 R40CD	
DO NOT SCALE DRAWING	
TITLE:	
WIRING INSTL - BODY, 12V	
SHEET 9	PART NO 176238 REV