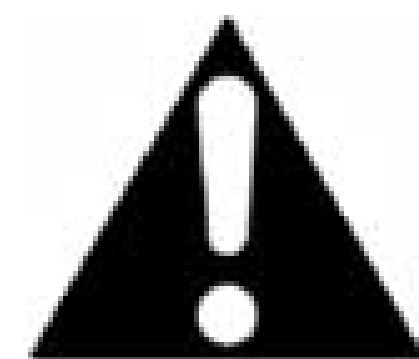




**DANGER**

**Danger of electrical shock, burns or death.** Always remove all power sources before attempting any repair, service or diagnostic work. Power can be present from shore power, generator, inverter or battery. All power sources must be disabled and secured before performing any service.

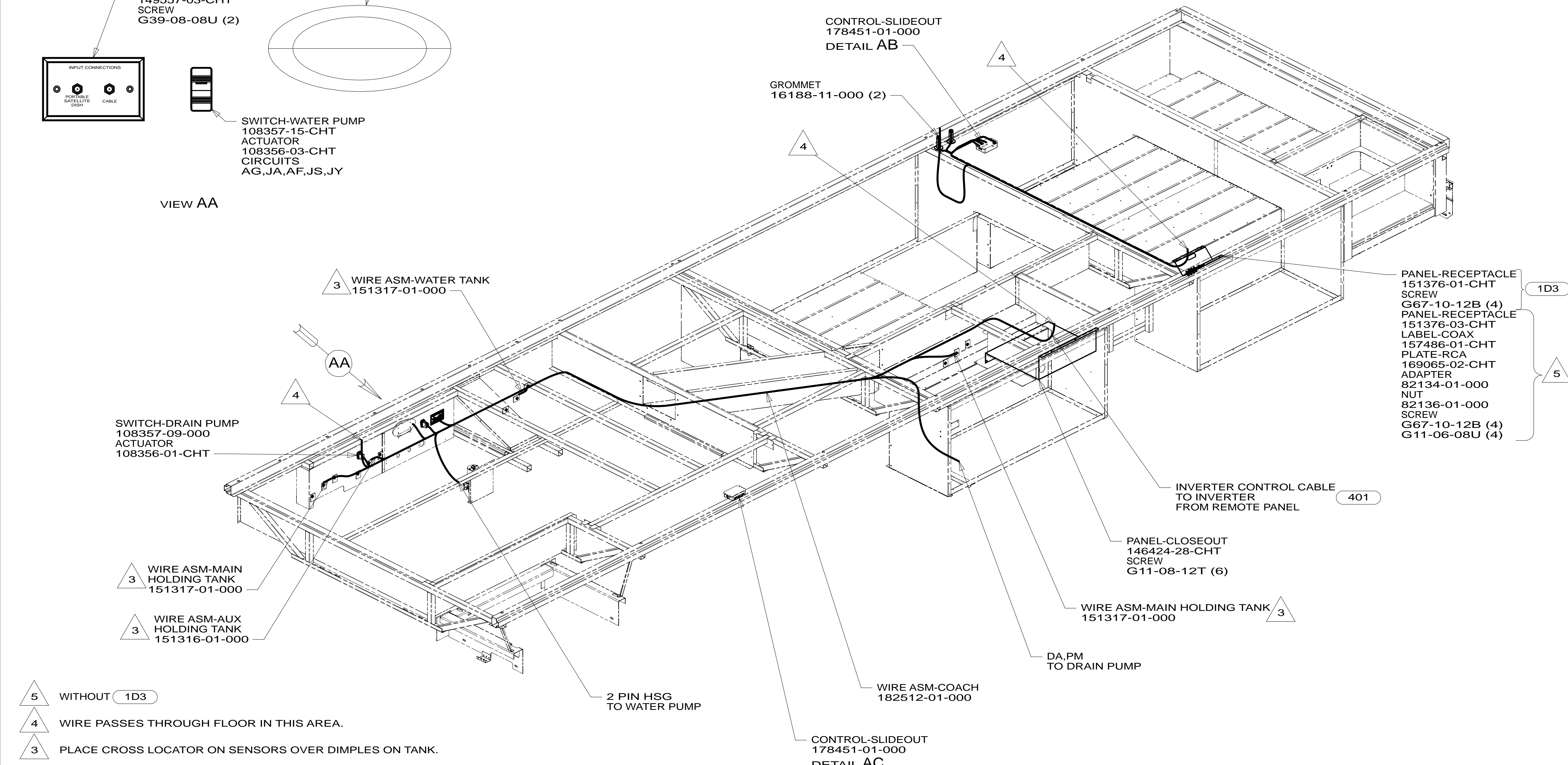
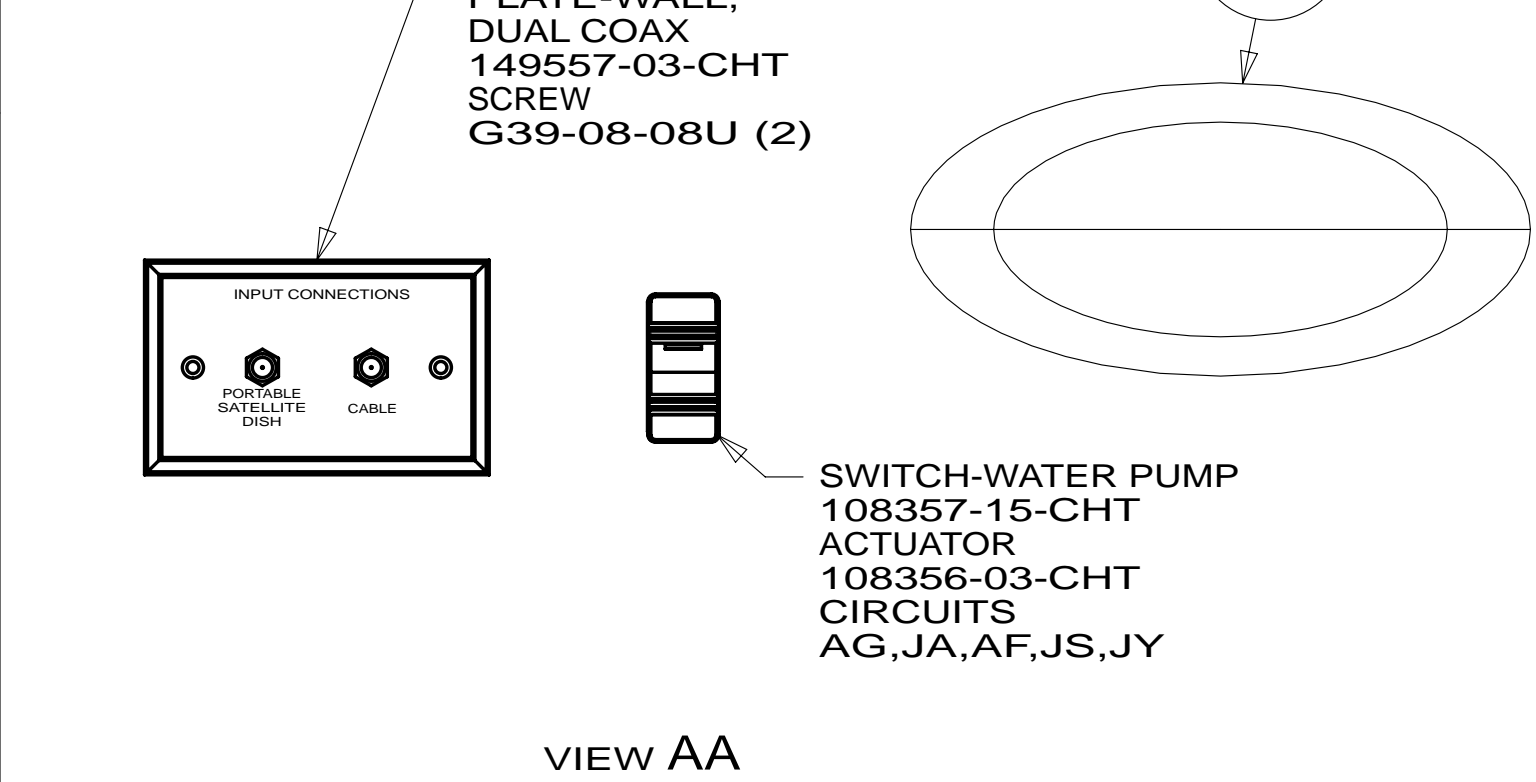
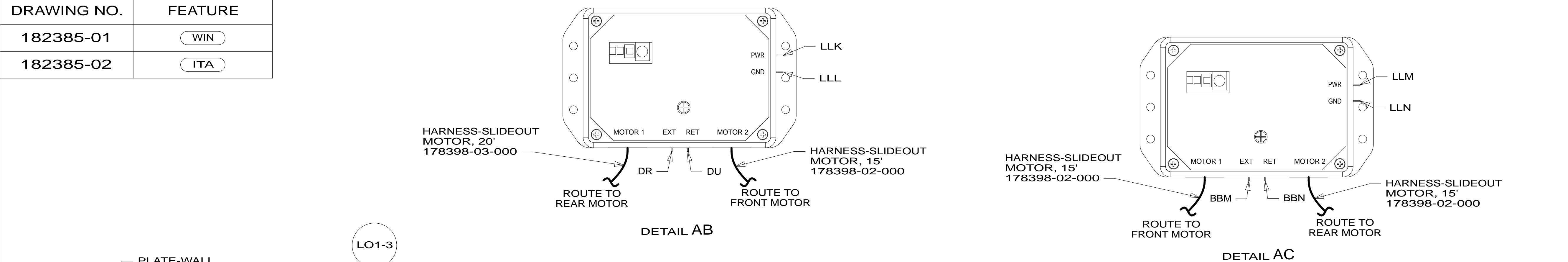


**CAUTION**

If you lack the skills, tools or equipment to perform diagnostic or repair work leave such work to an authorized Winnebago Industries dealer or other qualified shop.

DRAWING NO.	FEATURE
182385-01	WIN
182385-02	ITA

RELEASE	REV/DATE	DWG NO	182385
REV ZONE	REVISION RECORD	DATE	DFT-ORIG



- 5 WITHOUT 1D3
  - 4 WIRE PASSES THROUGH FLOOR IN THIS AREA.
  - 3 PLACE CROSS LOCATOR ON SENSORS OVER DIMPLES ON TANK.
2. ROUTE TANK SENSOR WIRES SO THEY DO NOT PASS OVER SENSORS. USE WIRE TIE MOUNT 155366-01-000 AND WIRE TIE 8343-01-000 AS NEEDED. TANK SURFACE MUST BE CLEANED USING ISOPROPYL ALCOHOL AND PRIMED WITH PRIMER 94.
  1. ALL WIRES TO BE SECURED WITH CLAMP 10495 OR 10497 OR WIRE TIE 8343 OR 108046 EVERY 600MM, USE SCREW G67-XX-XXX OR G56-XX-XXX AS APPROPRIATE FOR INSTALLATION.

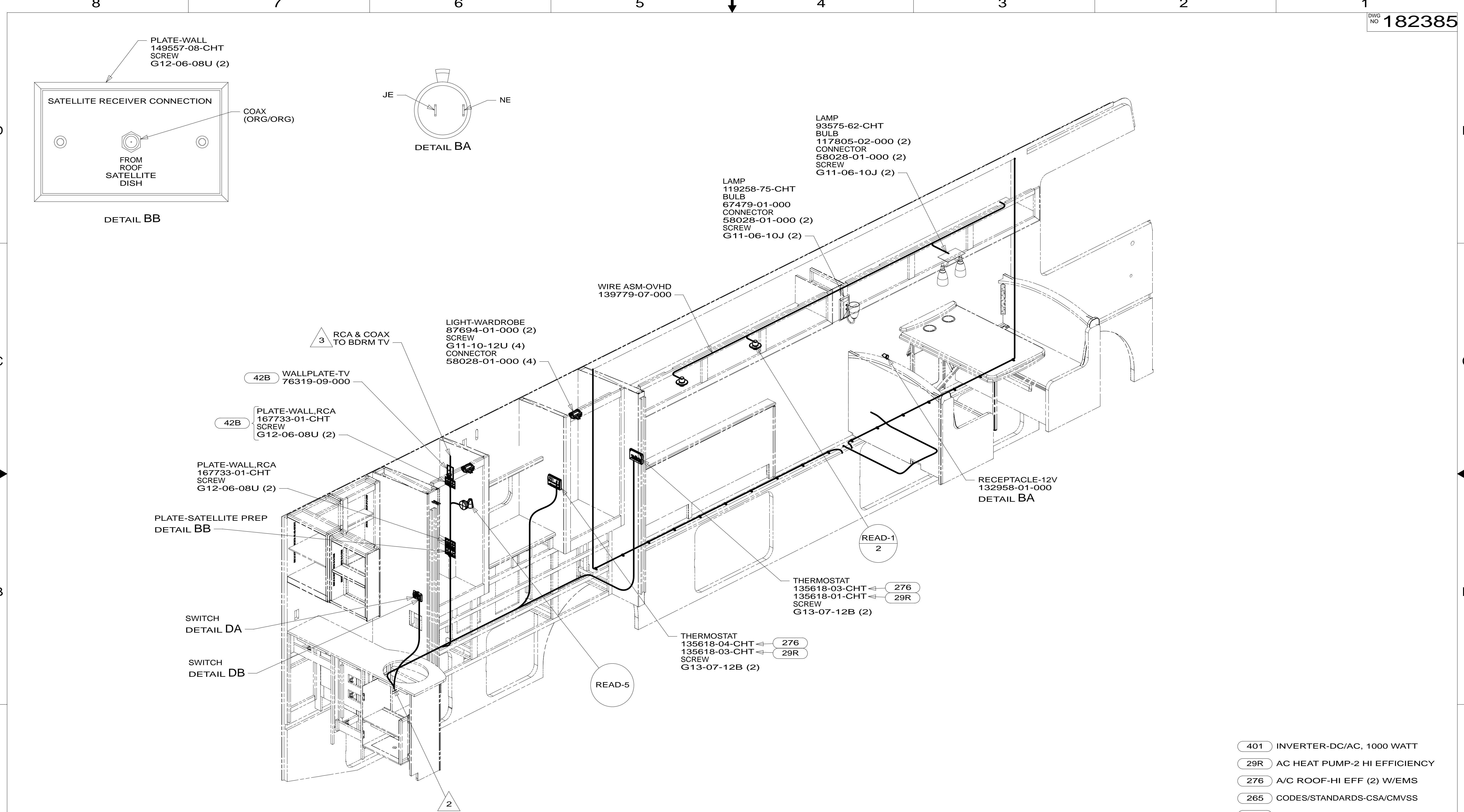
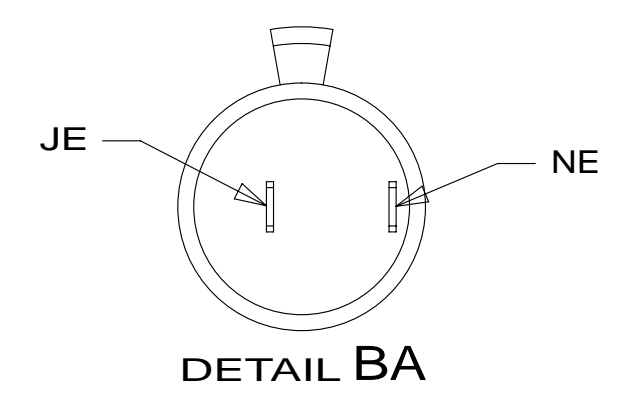
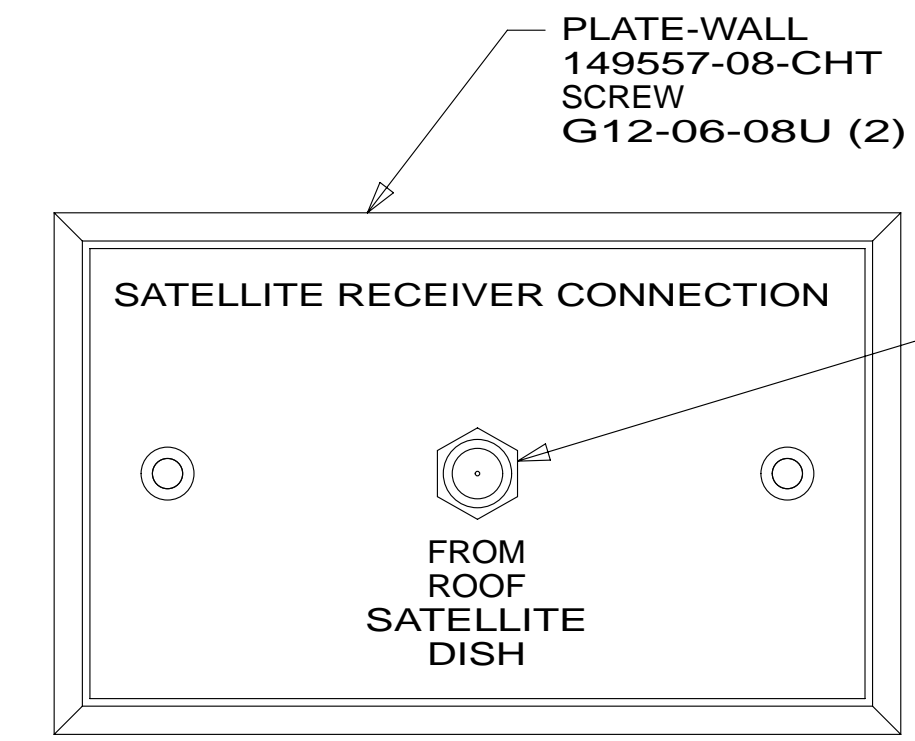
- 1D3 ENTERTAIN CENTR/EXT TV-DVD
- 401 INVERTER-DC/AC, 1000 WATT
- WIN WINNEBAGO ONLY
- ITA ITASCA ONLY
- 265 CODES/STANDARDS-CSA/CMVSS
- 1B1 CODES/STANDARDS USA

**WINNEBAGO** COPYRIGHT 2011 WINNEBAGO INDUSTRIES, INC.

DFT-ORIG	ORIG. DATE
CHKR	ALL DIMENSIONS ARE IN MILLIMETERS
P.E.	FIRST USED
M.E.	<b>13 E35F</b>
DSNR	MATERIAL:
UNSPECIFIED TOLERANCES ARE:	
WHOLE DIM (X)	: 3
ONE-PLACE (X.X)	: 1.5
TWO-PLACE (X.XX)	: 0.50
ANGLE	: 1°
THIRD ANGLE PROJECTION	
DO NOT SCALE DRAWING	REFER TO ES0018 FOR FASTENER TIGHTENING GUIDELINES
TITLE: <b>WIRING INSTL-BODY,12V</b>	
SHEET 1 OF 7	PART NO <b>182385</b> REV

FOR ELECTRICAL TORQUE SPECIFICATIONS SEE DWG NO. 128783-01-000

X-X FOR ELECTRICAL CALLOUTS SEE DWG NO. 121339-01-000



- 3 ROUTE RCA & COAX TO BEDROOM TV THROUGH THE ROUTED PATH IN SIDEWALL.
- 2 WIRE PASSES THROUGH FLOOR IN THIS AREA.

1. ALL WIRES TO BE SECURED WITH CLAMP 10495 OR 10497 OR WIRE TIE 8343 OR 108046 EVERY 600MM, USE SCREW G67-XX-XXX OR G56-XX-XXX AS APPROPRIATE FOR INSTALLATION.

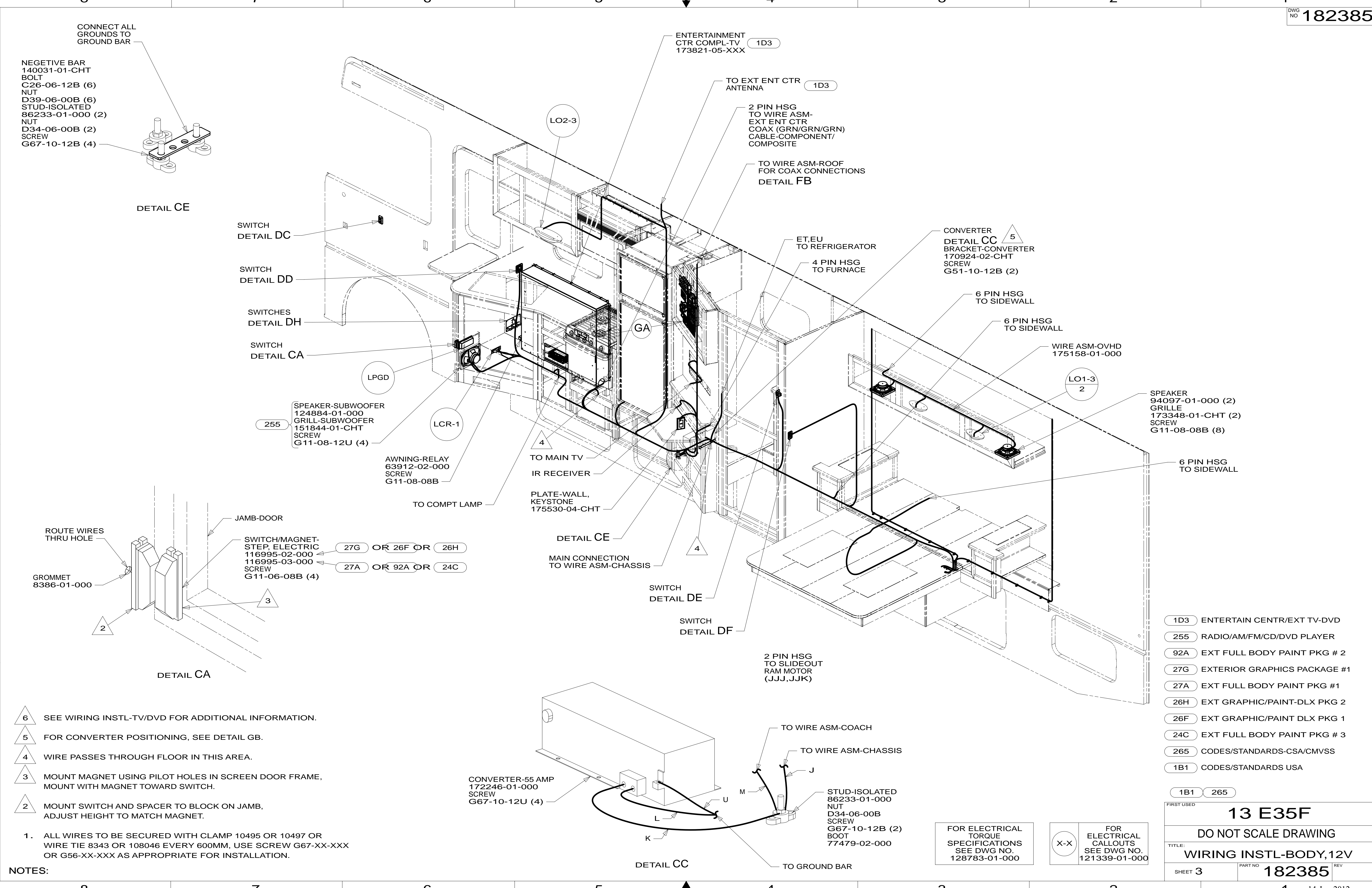
NOTES:

- 401 INVERTER-DC/AC, 1000 WATT
- 29R AC HEAT PUMP-2 HI EFFICIENCY
- 276 A/C ROOF-HI EFF (2) W/EMS
- 265 CODES/STANDARDS-CSA/CMVSS
- 1B1 CODES/STANDARDS USA

FIRST USED	
<b>13 E35F</b>	
DO NOT SCALE DRAWING	
TITLE: <b>WIRING INSTL-BODY,12V</b>	
SHEET 2	PART NO <b>182385</b> REV

FOR ELECTRICAL TORQUE SPECIFICATIONS SEE DWG NO. 128783-01-000

FOR ELECTRICAL CALLOUTS SEE DWG NO. 121339-01-000



- 6 SEE WIRING INSTL-TV/DVD FOR ADDITIONAL INFORMATION.
- 5 FOR CONVERTER POSITIONING, SEE DETAIL GB.
- 4 WIRE PASSES THROUGH FLOOR IN THIS AREA.
- 3 MOUNT MAGNET USING PILOT HOLES IN SCREEN DOOR FRAME, MOUNT WITH MAGNET TOWARD SWITCH.
- 2 MOUNT SWITCH AND SPACER TO BLOCK ON JAMB, ADJUST HEIGHT TO MATCH MAGNET.

1. ALL WIRES TO BE SECURED WITH CLAMP 10495 OR 10497 OR WIRE TIE 8343 OR 108046 EVERY 600MM, USE SCREW G67-XX-XXX OR G56-XX-XXX AS APPROPRIATE FOR INSTALLATION.

NOTES:

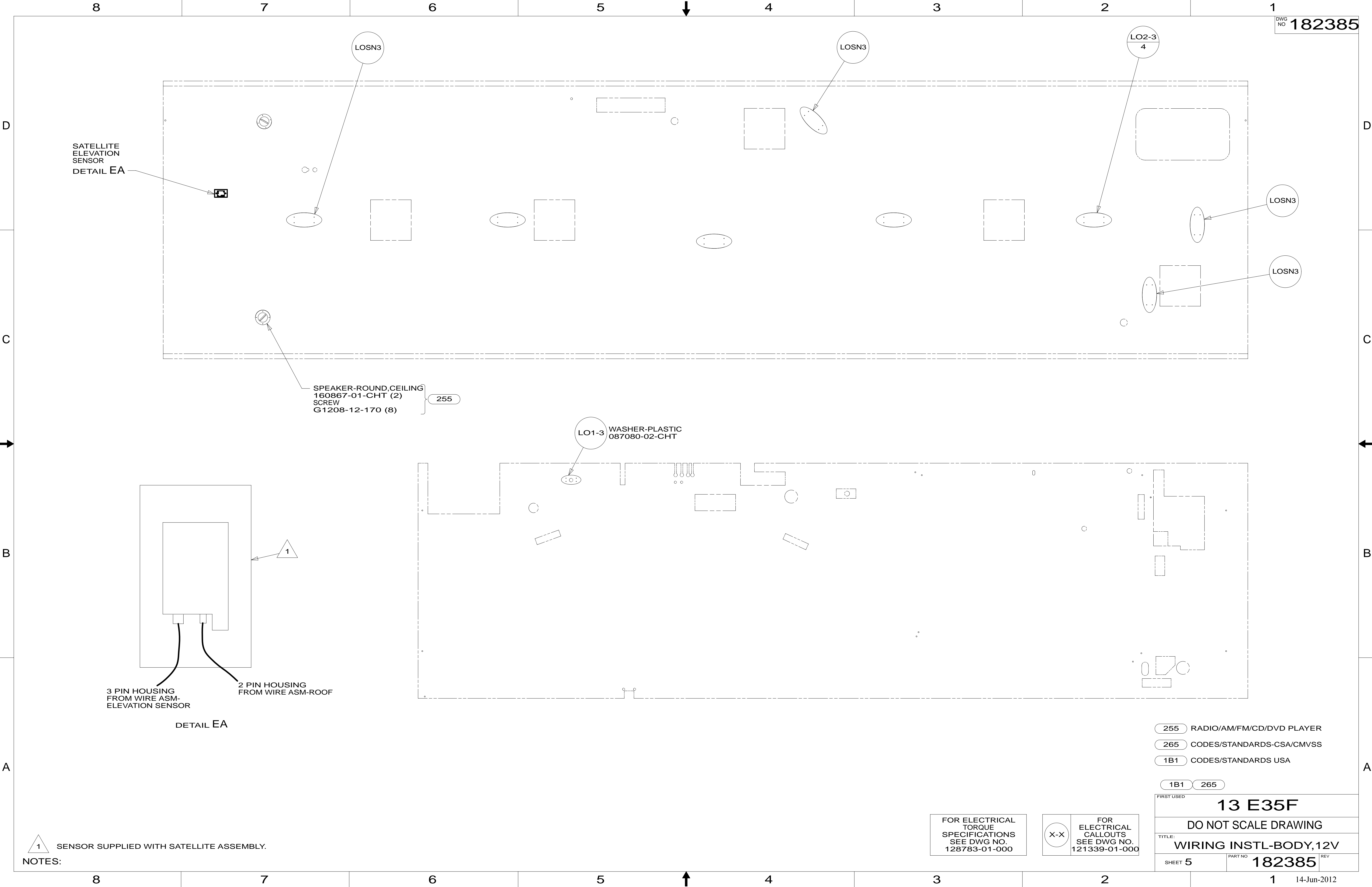
FOR ELECTRICAL TORQUE SPECIFICATIONS SEE DWG NO. 128783-01-000

FOR ELECTRICAL CALLOUTS SEE DWG NO. 121339-01-000

- 1D3 ENTERTAIN CENTR/EXT TV-DVD
- 255 RADIO/AM/FM/CD/DVD PLAYER
- 92A EXT FULL BODY PAINT PKG # 2
- 27G EXTERIOR GRAPHICS PACKAGE #1
- 27A EXT FULL BODY PAINT PKG #1
- 26H EXT GRAPHIC/PAINT-DLX PKG 2
- 26F EXT GRAPHIC/PAINT DLX PKG 1
- 24C EXT FULL BODY PAINT PKG # 3
- 265 CODES/STANDARDS-CSA/CMVSS
- 1B1 CODES/STANDARDS USA

FIRST USED	13 E35F	
DO NOT SCALE DRAWING		
TITLE: WIRING INSTL-BODY,12V		
SHEET 3	PART NO 182385	REV
		14-Jun-2012





SATELLITE ELEVATION SENSOR  
DETAIL EA

SPEAKER-ROUND, CEILING  
160867-01-CHT (2)  
SCREW  
G1208-12-170 (8)

255

LO1-3 WASHER-PLASTIC  
087080-02-CHT

3 PIN HOUSING FROM WIRE ASM-ELEVATION SENSOR  
2 PIN HOUSING FROM WIRE ASM-ROOF

DETAIL EA

- 255 RADIO/AM/FM/CD/DVD PLAYER
- 265 CODES/STANDARDS-CSA/CMVSS
- 1B1 CODES/STANDARDS USA

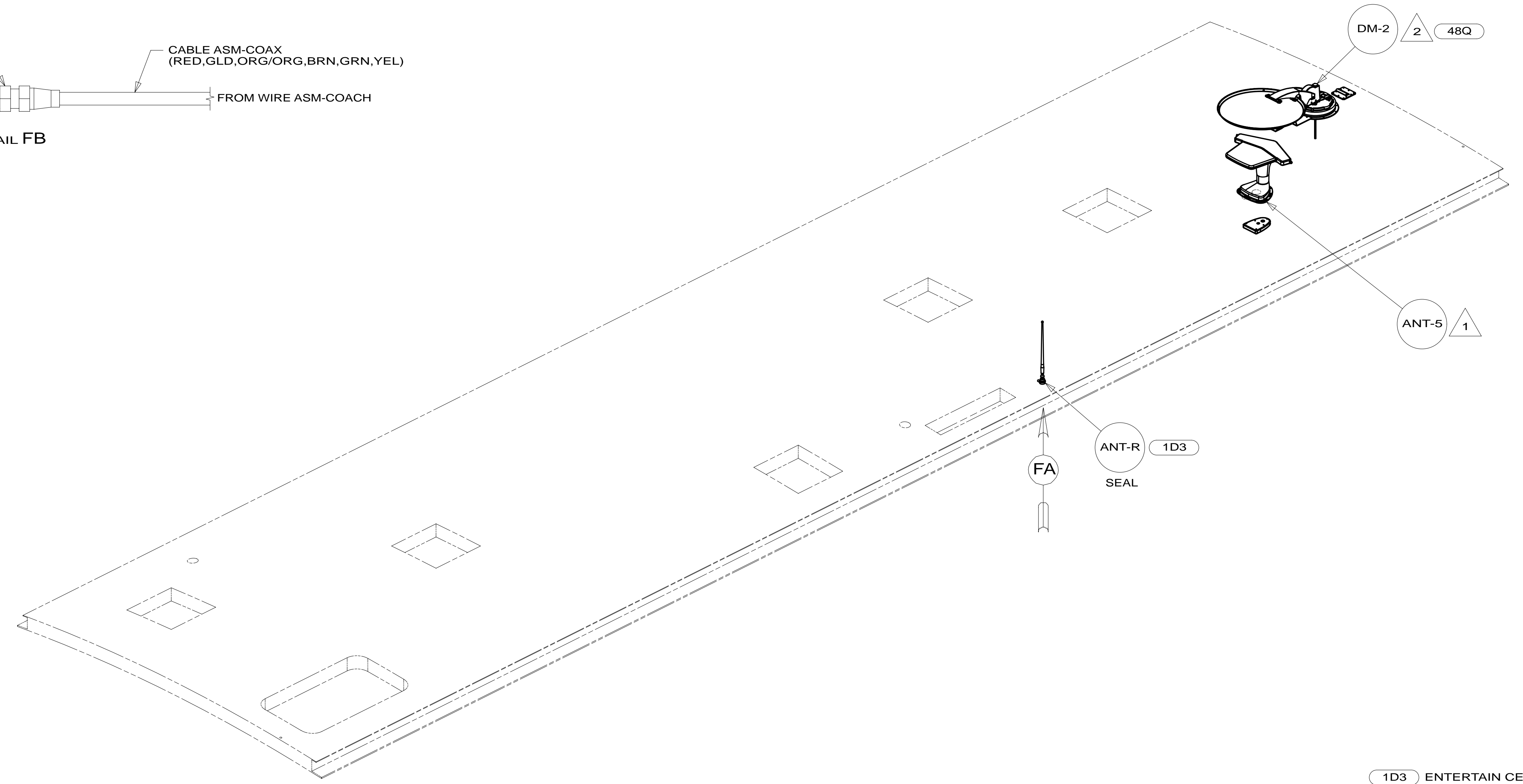
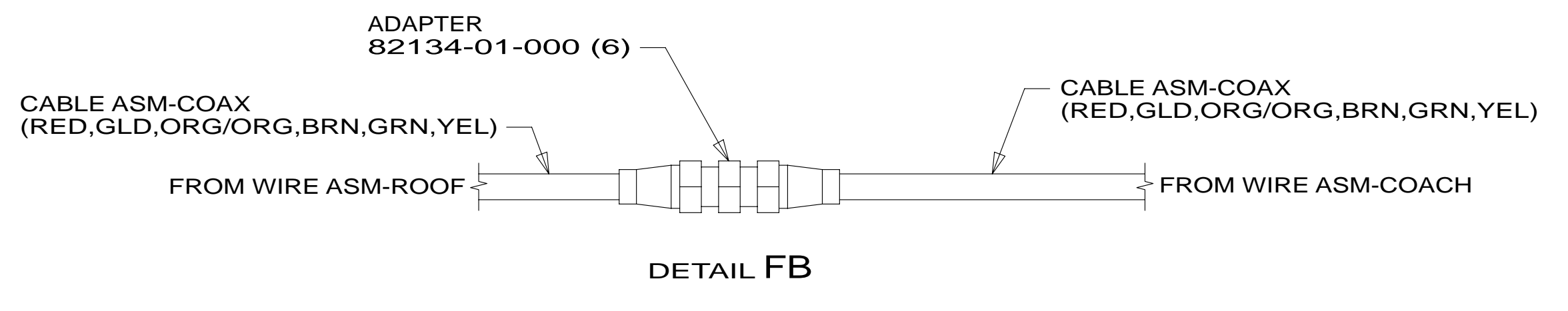
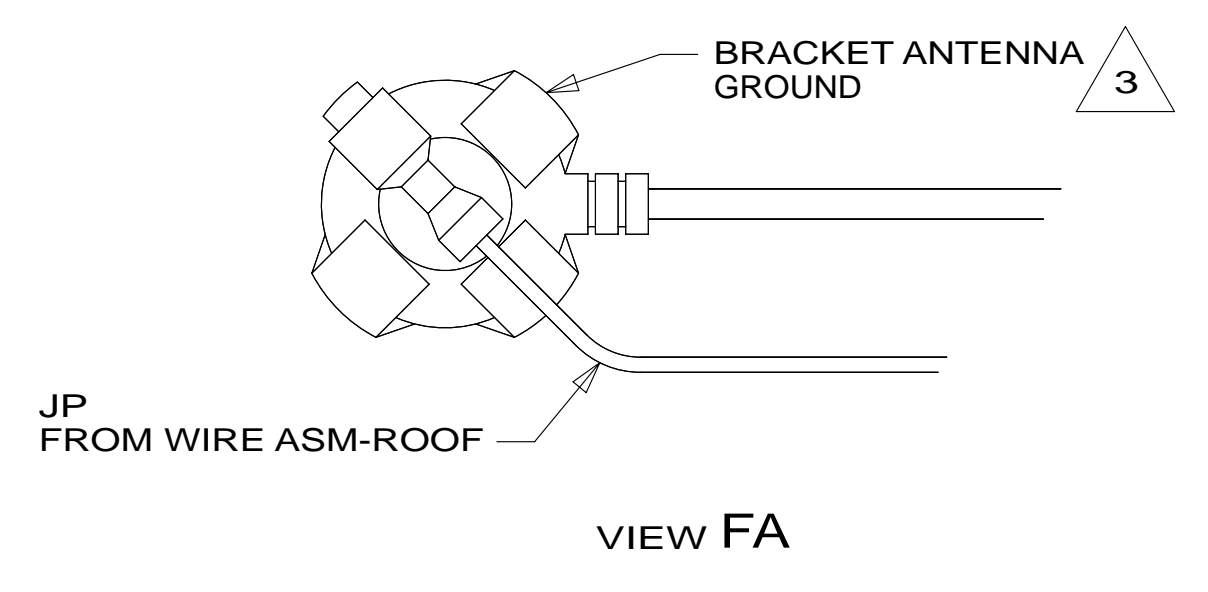
1B1 265

FIRST USED	
<b>13 E35F</b>	
DO NOT SCALE DRAWING	
TITLE: <b>WIRING INSTL-BODY, 12V</b>	
SHEET 5	PART NO <b>182385</b> REV

FOR ELECTRICAL TORQUE SPECIFICATIONS SEE DWG NO. 128783-01-000

FOR ELECTRICAL CALLOUTS SEE DWG NO. 121339-01-000

1 SENSOR SUPPLIED WITH SATELLITE ASSEMBLY.  
NOTES:



- NOTES:
- 3 WRAP LEGS AROUND ANTENNA BASE.
  - 2 CONNECT THE ORANGE COAX FROM ROOF ASM TO ONE OF THE 2 GRAY COAX CABLES ON THE SATELLITE DISH, THE OTHER GRAY COAX IS NOT USED.
  - 1 SEE DWG 76319-01-000 FOR INSTALLATION INSTRUCTIONS.

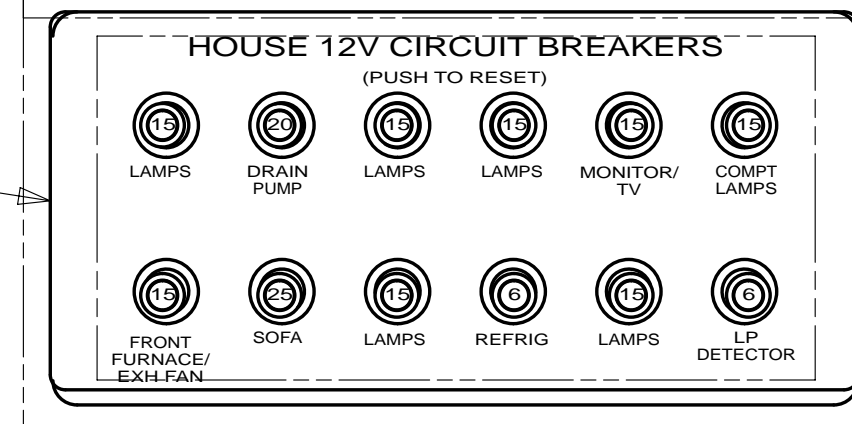
- 1D3 ENTERTAIN CENTR/EXT TV-DVD
- 48Q SATELLITE TV SYSTEM MANUAL
- 265 CODES/STANDARDS-CSA/CMVSS
- 1B1 CODES/STANDARDS USA

FIRST USED	
<b>13 E35F</b>	
DO NOT SCALE DRAWING	
TITLE: <b>WIRING INSTL-BODY, 12V</b>	
SHEET 6	PART NO <b>182385</b> REV

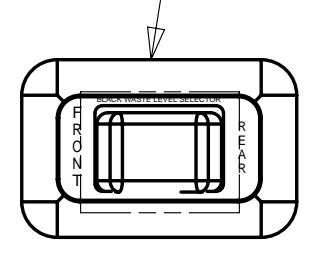
FOR ELECTRICAL TORQUE SPECIFICATIONS SEE DWG NO. 128783-01-000

FOR ELECTRICAL CALLOUTS SEE DWG NO. 121339-01-000

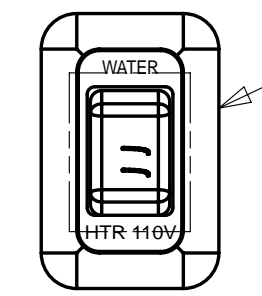
12V BREAKER PANEL  
DETAIL DK



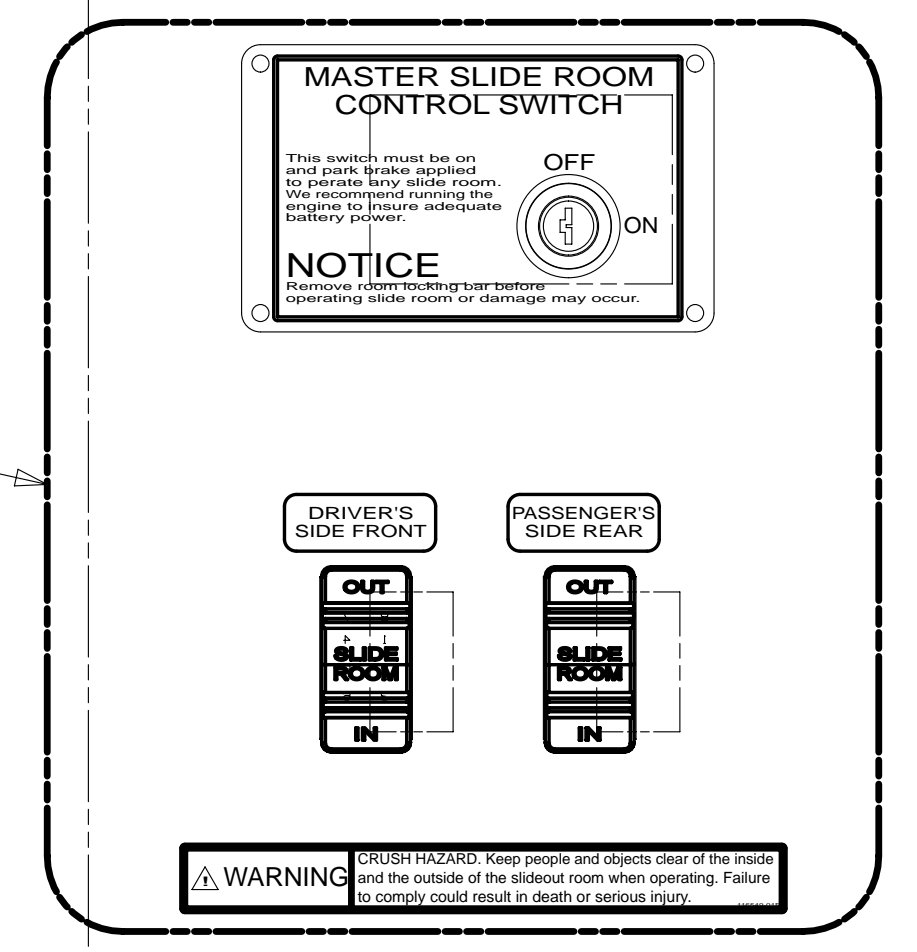
SWITCH  
DETAIL DM



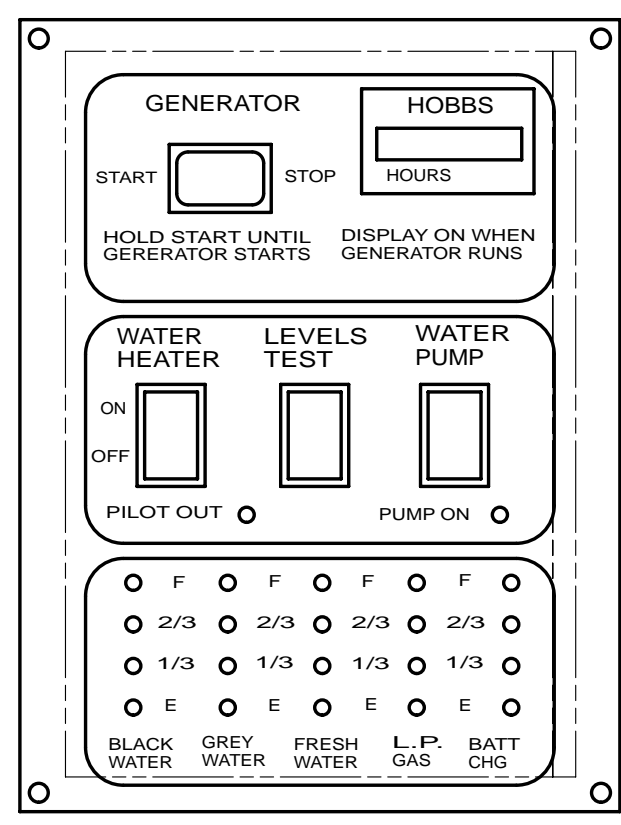
SWITCH  
DETAIL DG



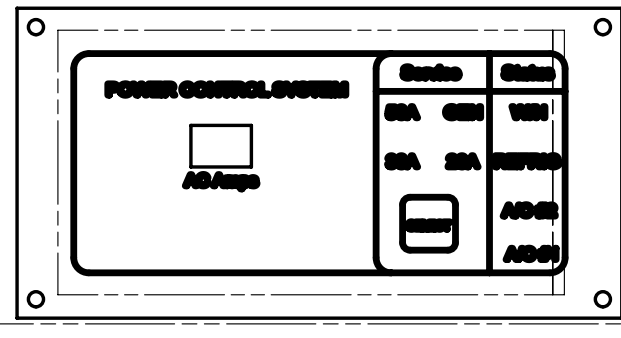
SWITCHES  
DETAIL DJ



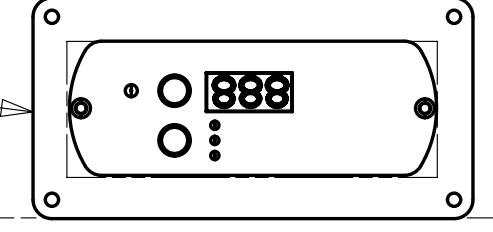
PANEL-MONITOR  
134940-06-CHT  
SCREW  
G11-08-08U (4)



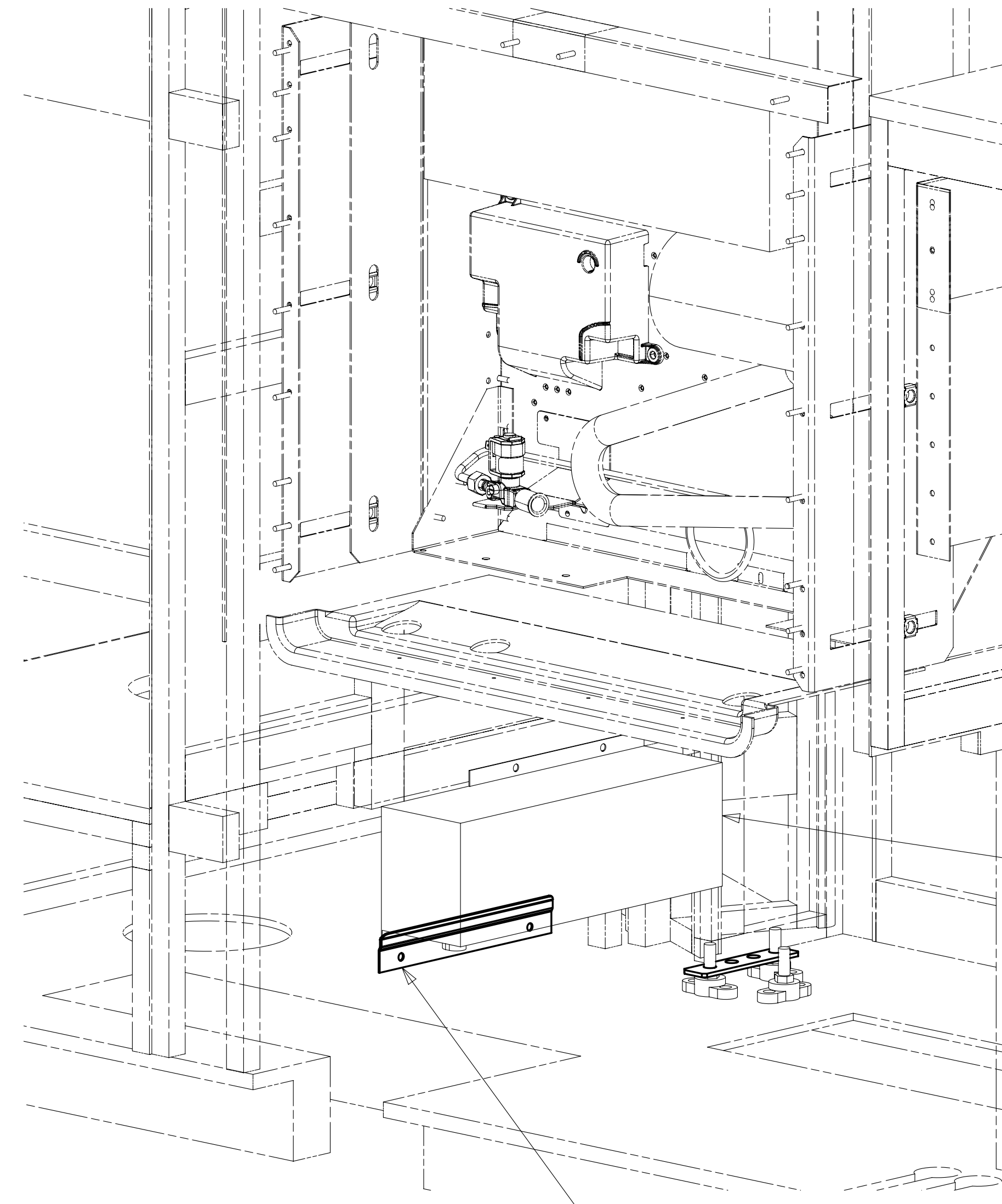
PANEL-MONITOR,EMS  
174295-01-000



401  
REMOTE PANEL-INVERTER  
173337-02-000  
MODULE-12V DISCONNECT  
173355-01-000  
DETAIL GC



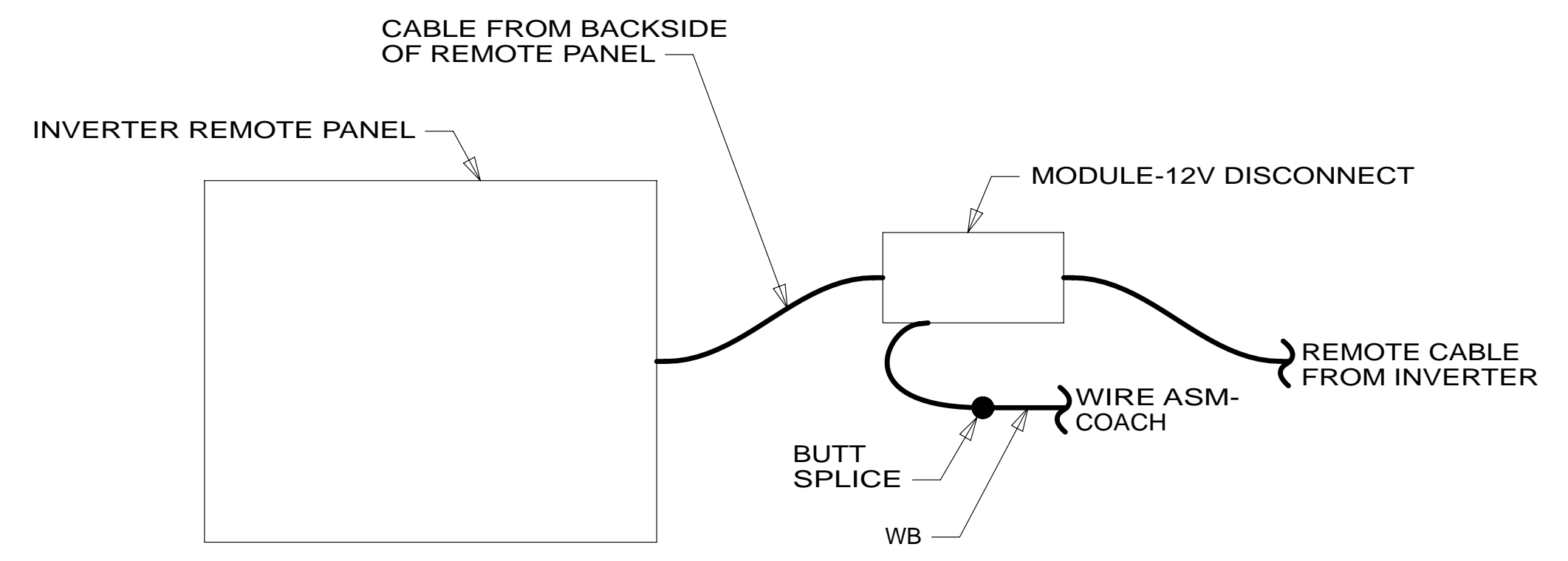
VIEW GA



CONVERTER  
(REF)

BRACKET-CONVERTER  
(REF)

VIEW GB



DETAIL GC

2 DATA CABLE FOR EMS PANEL IS MARKED WITH RED TAPE.

1. ALL WIRES TO BE SECURED WITH CLAMP 10495 OR 10497 OR WIRE TIE 8343 OR 104046 EVERY 600MM, USE SCREW G64-XX-XXX OR G56-XX-XXX AS APPROPRIATE FOR INSTALLATION.

NOTES:

FOR ELECTRICAL TORQUE SPECIFICATIONS SEE DWG NO. 128783-01-000

FOR ELECTRICAL CALLOUTS SEE DWG NO. 121339-01-000

- 401 INVERTER-DC/AC, 1000 WATT
- 265 CODES/STANDARDS-CSA/CMVSS
- 1B1 CODES/STANDARDS USA

FIRST USED	
<b>13 E35F</b>	
DO NOT SCALE DRAWING	
TITLE: <b>WIRING INSTL-BODY,12V</b>	
SHEET 7	PART NO <b>182385</b> REV



8

7

6

5

4

3

2

1

D

D

C

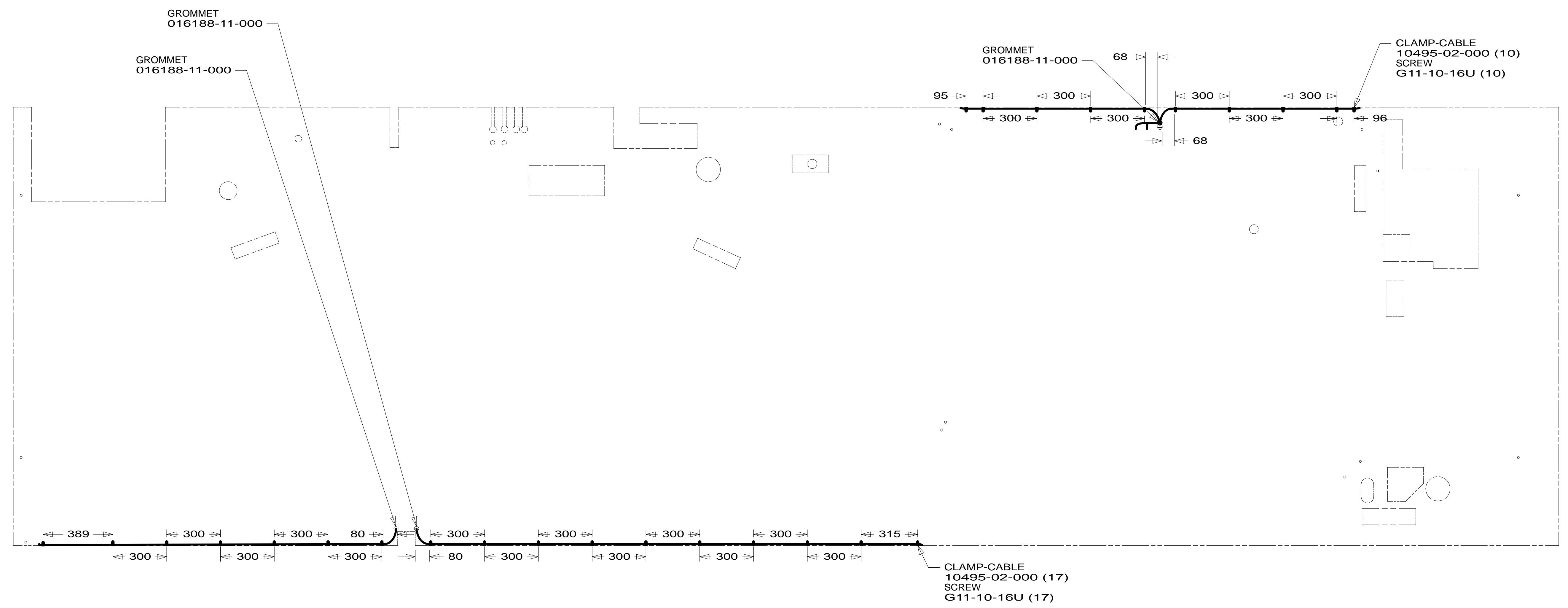
C

B

B

A

A



265 CODES/STANDARDS-CSA/CMVSS

1B1 CODES/STANDARDS USA

1B1 265

FIRST USED **13 E35F**

**DO NOT SCALE DRAWING**

TITLE: **WIRING INSTL-BODY,12V**

SHEET **8** PART NO **182385** REV

FOR ELECTRICAL TORQUE SPECIFICATIONS SEE DWG NO. 128783-01-000

FOR ELECTRICAL CALLOUTS SEE DWG NO. 121339-01-000