



DANGER

Danger of electrical shock, burns or death. Always remove all power sources before attempting any repair, service or diagnostic work. Power can be present from shore power, generator, inverter or battery. All power sources must be disabled and secured before performing any service.

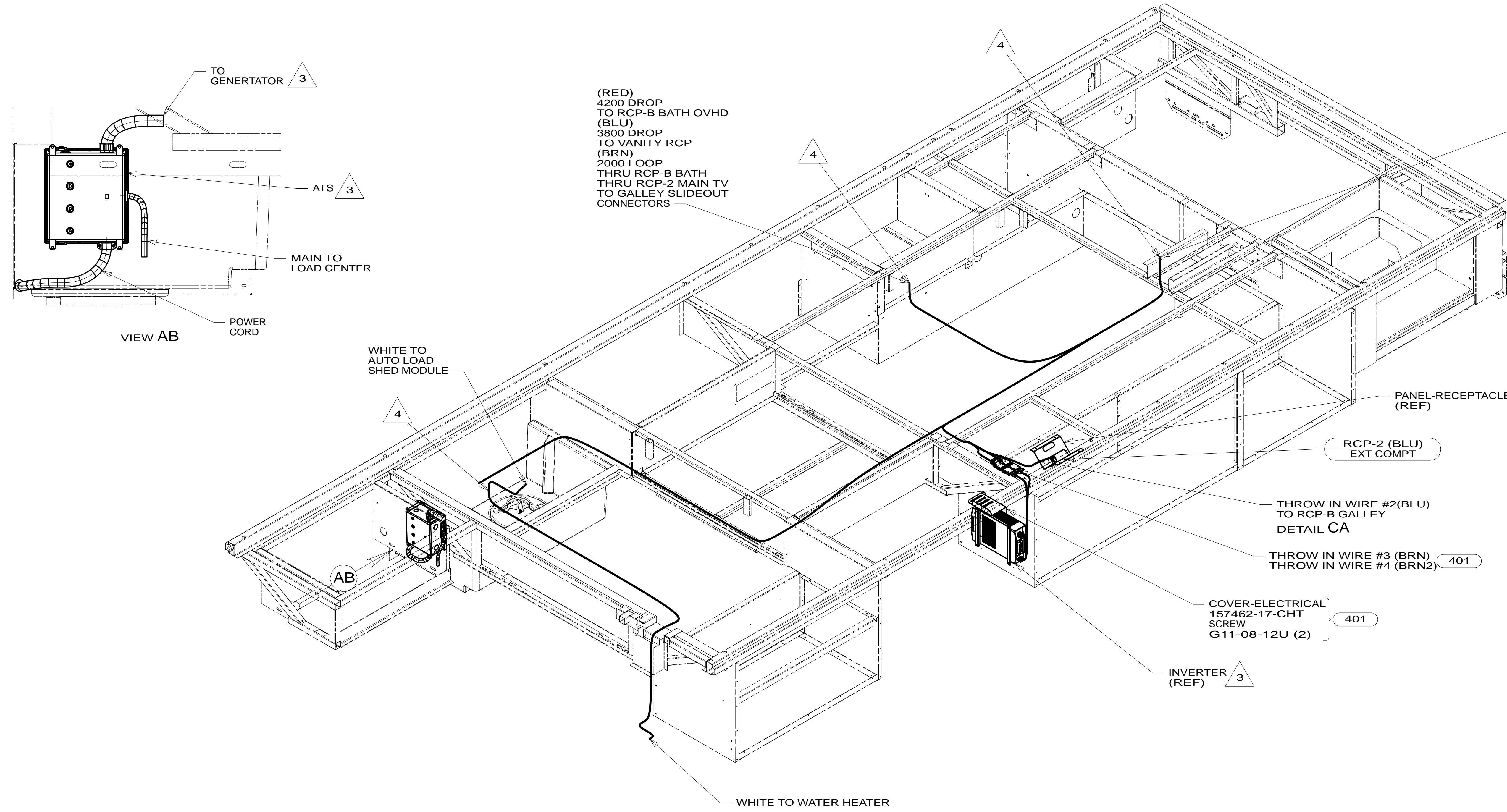


CAUTION

If you lack the skills, tools or equipment to perform diagnostic or repair work leave such work to an authorized Winnebago Industries dealer or other qualified shop.

DRAWING NO.	FEATURE
185722-11	1B1 12D
185722-15	265 12D

RELEASE	REV/DATE	DWG NO	185722
REV ZONE	REVISION RECORD	DATE	DFT-ORIG



(BLU)
1600 LOOP
THRU GALLEY GFI RCP
THRU GALLEY RCP-B
(BLU THROW IN WIRE #2)
1500 DROP
THRU RCP-B GALLEY
DETAIL CA

(BRN-2, YEL, BLK)
1200 DROP
TO SLIDEOUT CONNECTORS
DETAIL DA

(RED)
4200 DROP
TO RCP-B BATH OVHD
(BLU)
3800 DROP
TO VANITY RCP
(BRN)
2000 LOOP
THRU RCP-B BATH
THRU RCP-2 MAIN TV
TO GALLEY SLIDEOUT
CONNECTORS

- 1D3 ENTERTAIN CENTR/EXT TV-DVD
- 401 INVERTER-DC/AC, 1000 WATT
- 12D ELECTRICAL SYSTEM 30 AMP
- 265 CODES/STANDARDS-CSA/CMVSS
- 1B1 CODES/STANDARDS USA

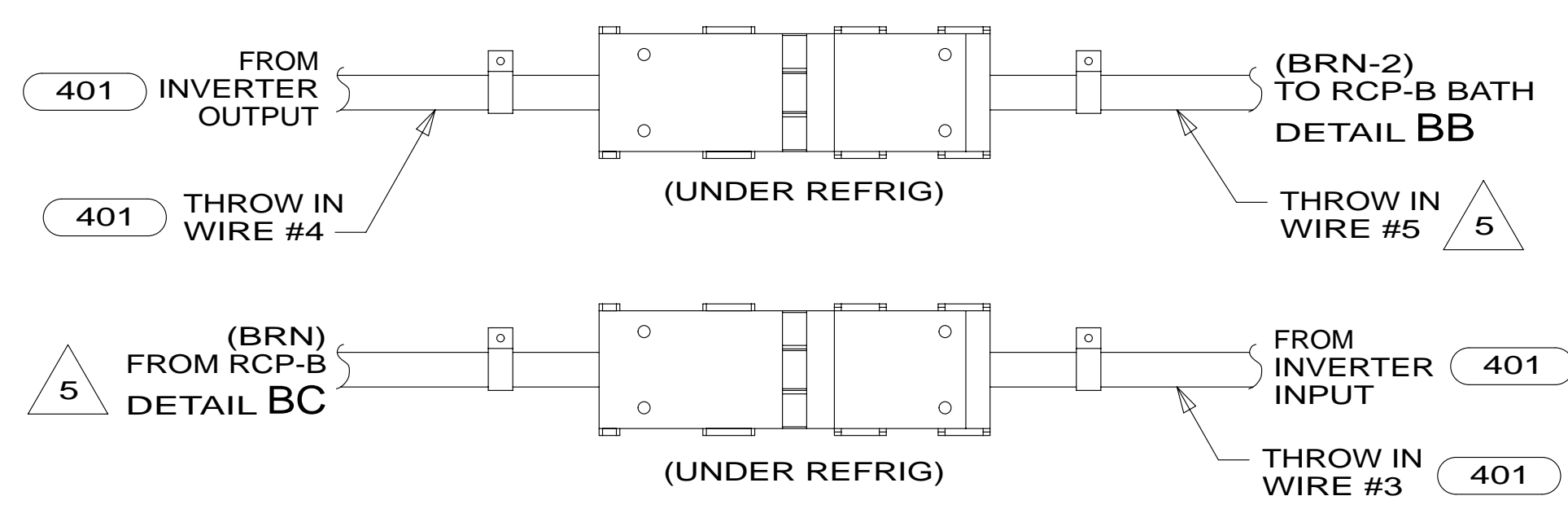
1B1 265

WINNEBAGO
COPYRIGHT 2014
WINNEBAGO
INDUSTRIES, INC.

DFT-ORIG	ORIG. DATE
CHKR	ALL DIMENSIONS ARE IN MILLIMETERS
P.E.	FIRST USED
M.E.	14 E27N
DSNR	MATERIAL:
UNSPECIFIED TOLERANCES ARE:	
WHOLE DIM (X)	: 3
ONE-PLACE (X.X)	: 1.5
TWO-PLACE (X.XX)	: 0.50
ANGLE	: 1°
THIRD ANGLE PROJECTION	
DO NOT SCALE DRAWING	REFER TO ES0018 FOR FASTENER TIGHTENING GUIDELINES

- 5 WITHOUT INVERTER THROW IN #2 (BRN-2) CONNECTS TO (BRN) FROM LOAD CENTER.
- 4 WIRE ROUTED THROUGH FLOOR IN THIS AREA.
- 3 SEE LOAD CENTER/ATS ASM FOR ADDITIONAL INFORMATION.

2. WIRES ROUTED UNDER FLOOR.
1. ALL WIRES TO BE SECURED WITH CLAMP 10495 OR 10497 OR WIRE TIE 8343 OR 108046 EVERY 600MM, USE SCREW G67-XX-XXX OR G56-XX-XXX AS APPROPRIATE FOR INSTALLATION.



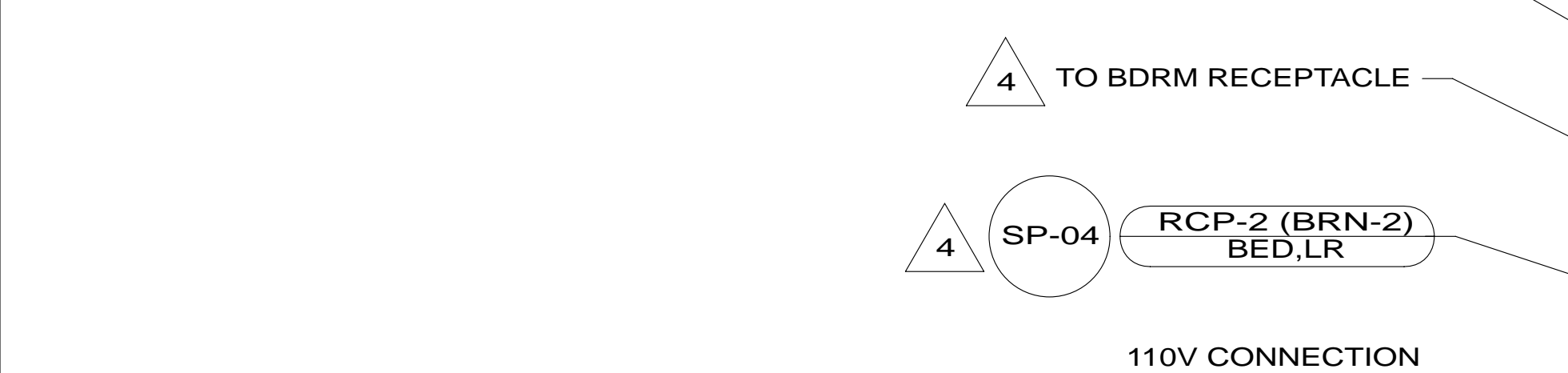
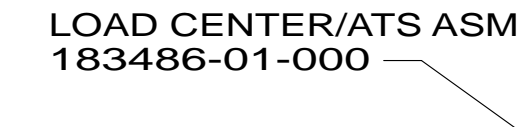
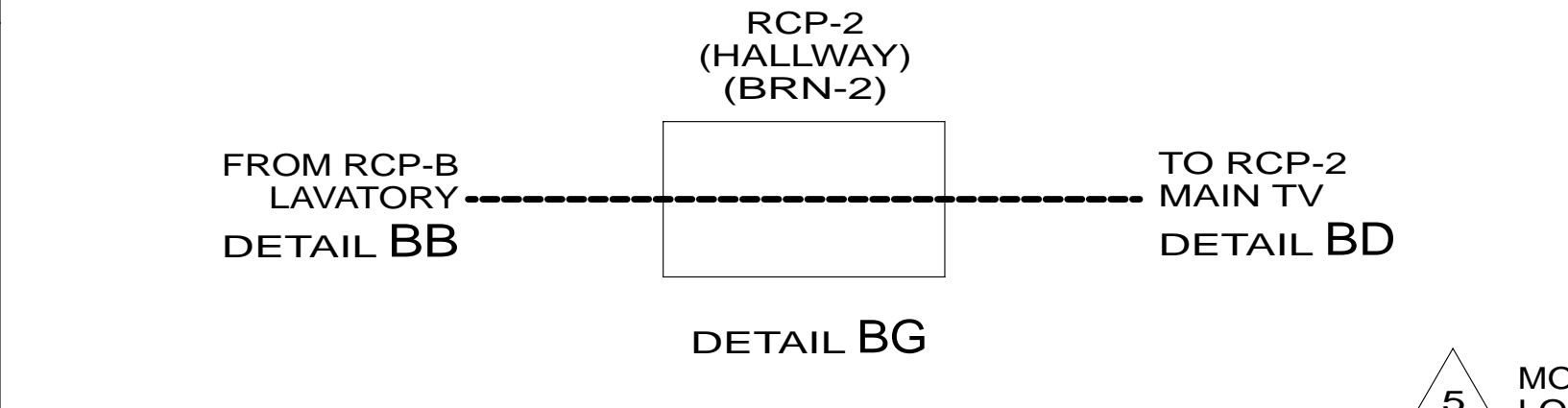
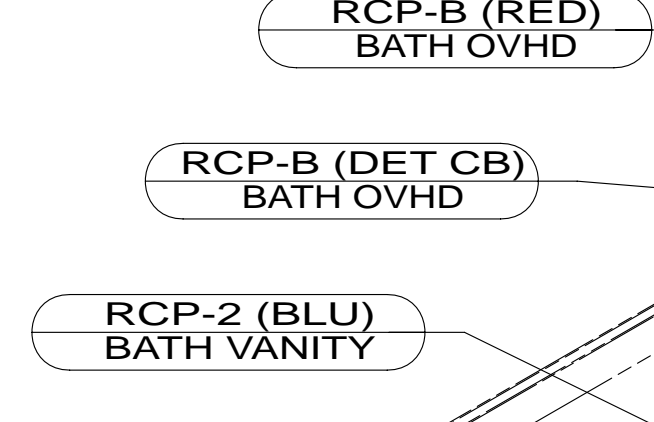
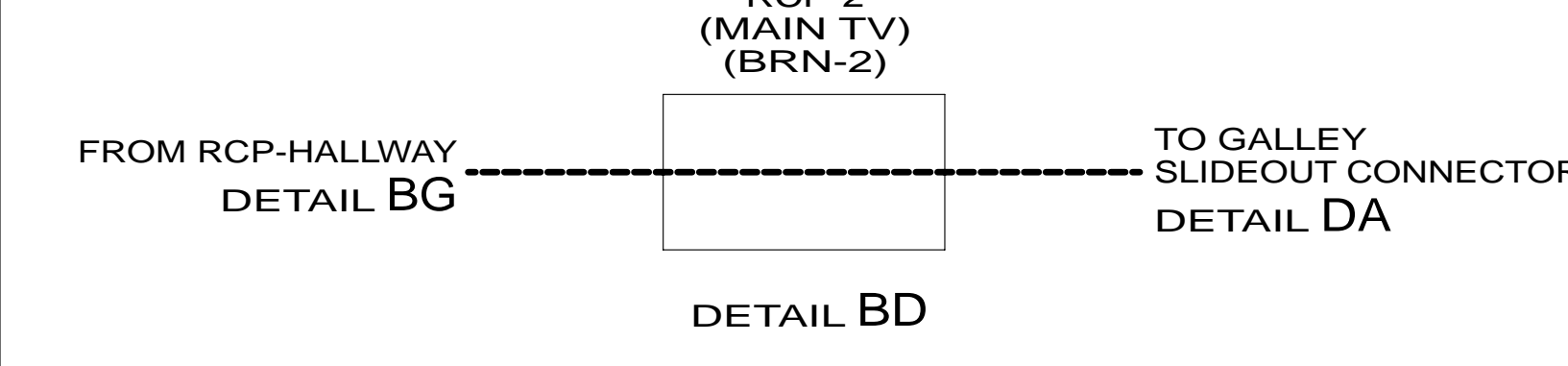
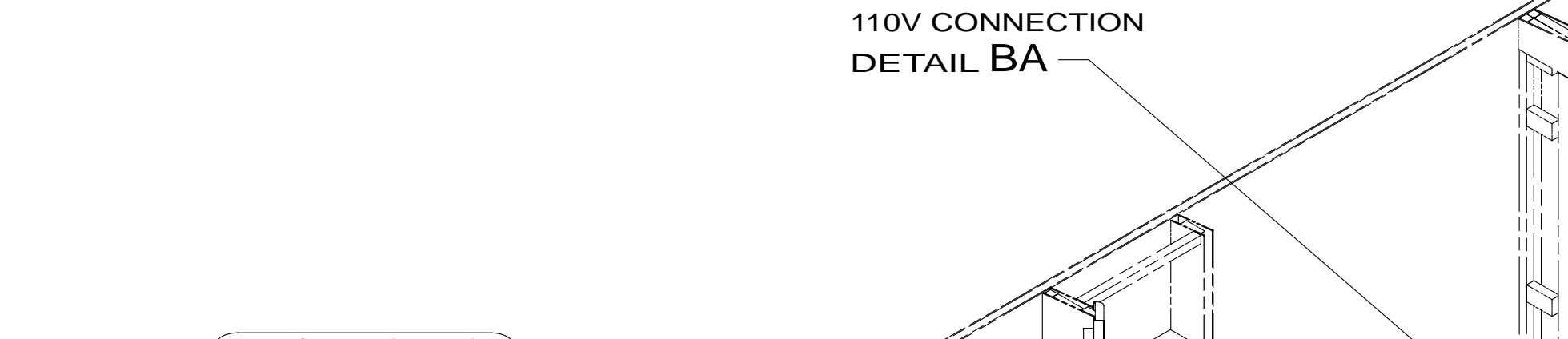
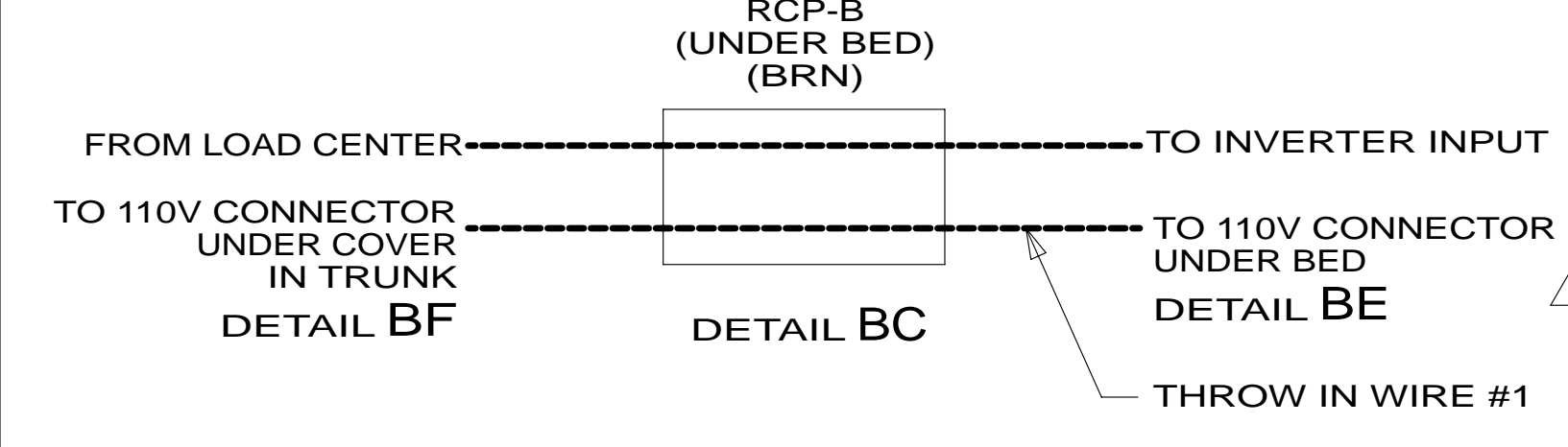
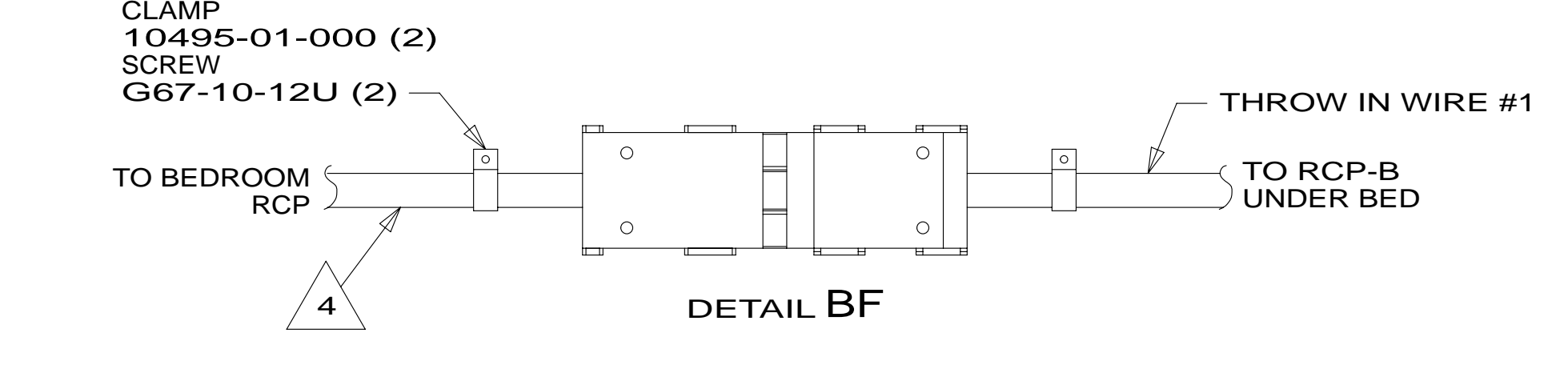
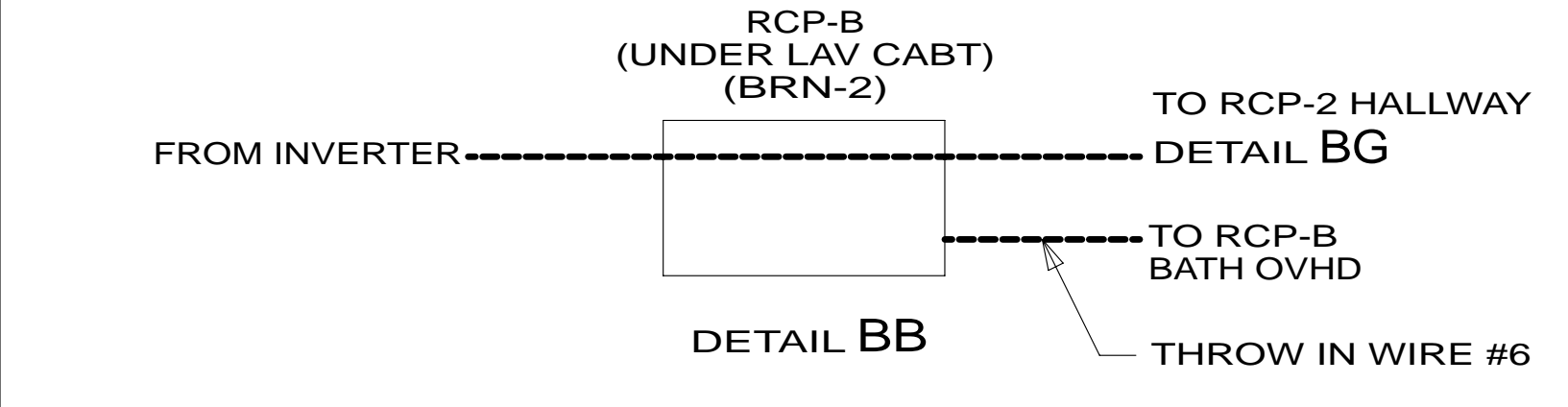
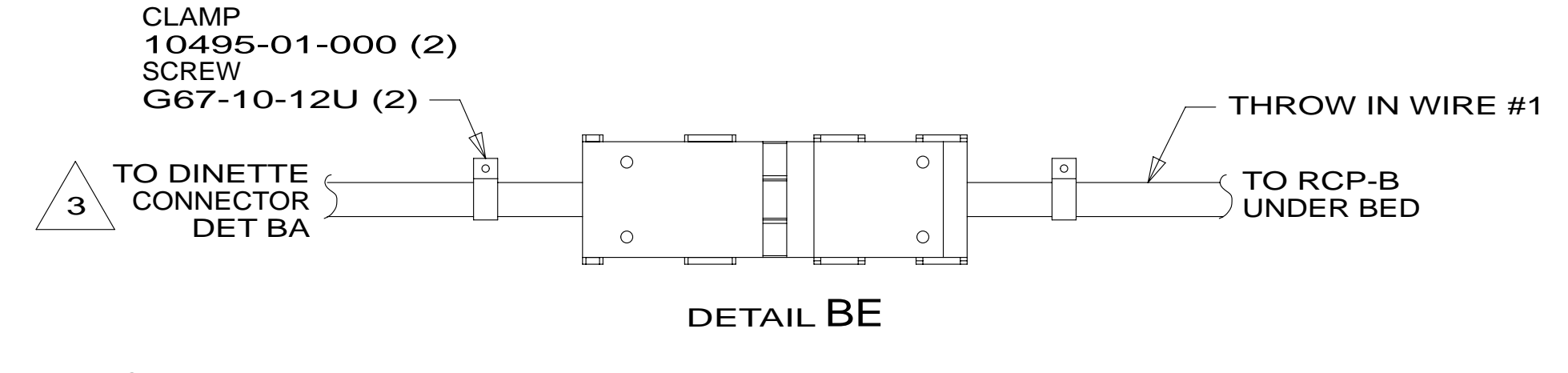
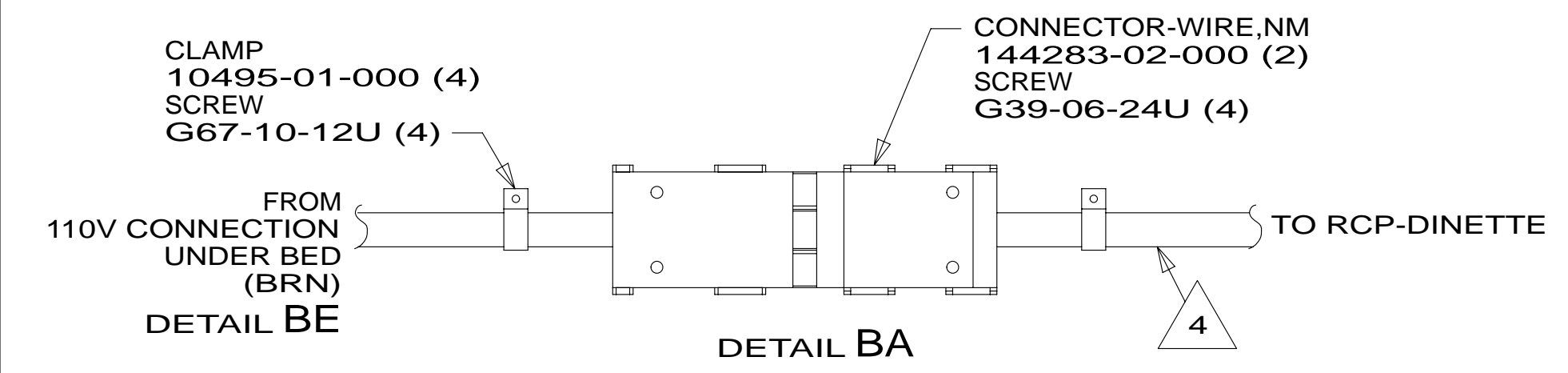
FOR ELECTRICAL
TORQUE
SPECIFICATIONS
SEE DWG NO.
128783-01-000

FOR
ELECTRICAL
CALLOUTS
SEE DWG NO.
121339-01-000

TITLE:
WIRING INSTL-BODY, 110V

SHEET 1 OF 5	PART NO	185722	REV
REF:	1	25-Mar-2014	

* 185722 *



- 5 SEE LOAD CENTER/ATS ASM FOR ADDITIONAL INFORMATION.
- 4 WIRE ROUTED IN SIDEWALL
- 3 WIRE PART OF WIRE ASM-CHASSIS.
- 2 WIRE ROUTES THRU FLOOR IN THIS AREA.

1. ALL WIRES TO BE SECURED WITH CLAMP 10495 OR 10497 OR WIRE TIE 8343 OR 108046 EVERY 600MM, USE SCREW G67-XX-XXX OR G56-XX-XXX AS APPROPRIATE FOR INSTALLATION.

NOTES:

FOR ELECTRICAL TORQUE SPECIFICATIONS SEE DWG NO. 128783-01-000

FOR ELECTRICAL CALLOUTS SEE DWG NO. 121339-01-000

- 41Q SOFA/SLEEPER-ULTRALEATHER
- 265 CODES/STANDARDS-CSA/CMVSS
- 1B1 CODES/STANDARDS USA

1B1	265
FIRST USED	
14 E27N	
DO NOT SCALE DRAWING	
TITLE: WIRING INSTL-BODY, 110V	
SHEET 2	PART NO 185722 REV
25-Mar-2014	

* 185722 * A

8 7 6 5 4 3 2 1

D

D

C

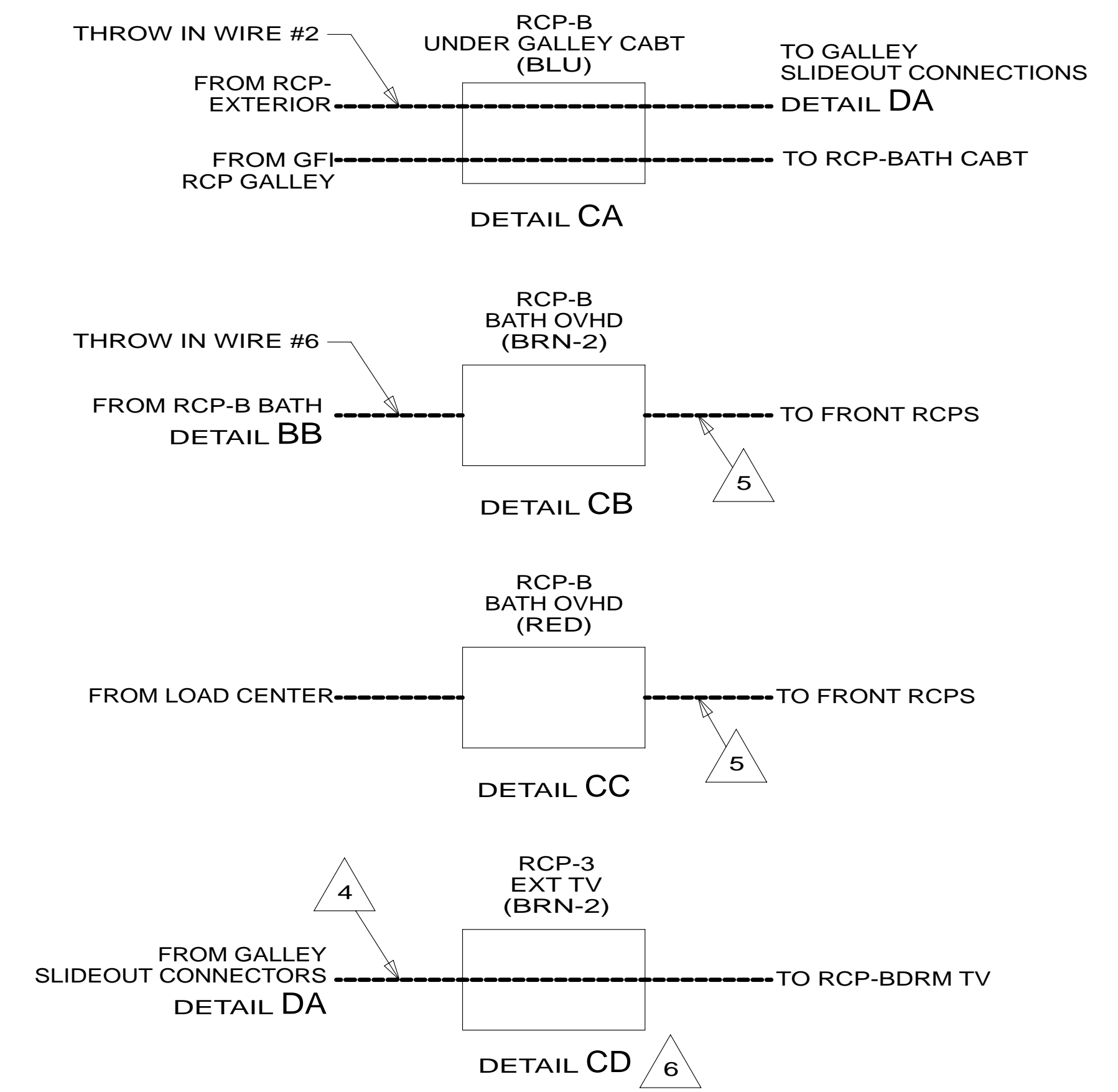
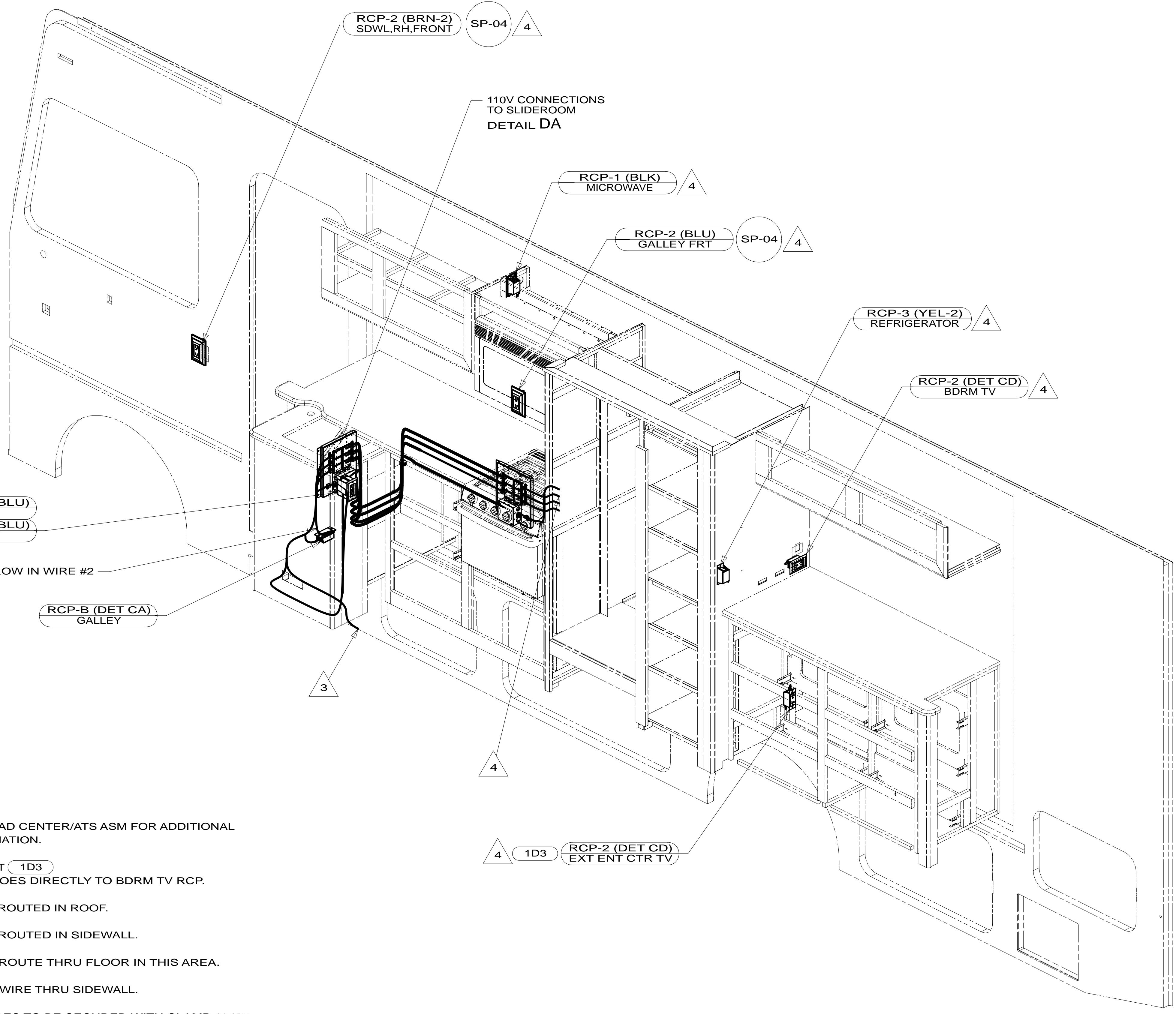
C

B

B

A

A



- 7 SEE LOAD CENTER/ATS ASM FOR ADDITIONAL INFORMATION.
 - 6 WITHOUT 1D3 WIRE GOES DIRECTLY TO BDRM TV RCP.
 - 5 WIRES ROUTED IN ROOF.
 - 4 WIRES ROUTED IN SIDEWALL.
 - 3 WIRES ROUTE THRU FLOOR IN THIS AREA.
 - 2 ROUTE WIRE THRU SIDEWALL.
1. ALL WIRES TO BE SECURED WITH CLAMP 10495 OR 10497 OR WIRE TIE 8343 OR 108046 EVERY 600MM, USE SCREW G67-XX-XXX OR G56-XX-XXX AS APPROPRIATE FOR INSTALLATION.

NOTES:

- 1D3 ENTERTAIN CENTR/EXT TV-DVD
- 265 CODES/STANDARDS-CSA/CMVSS
- 1B1 CODES/STANDARDS USA

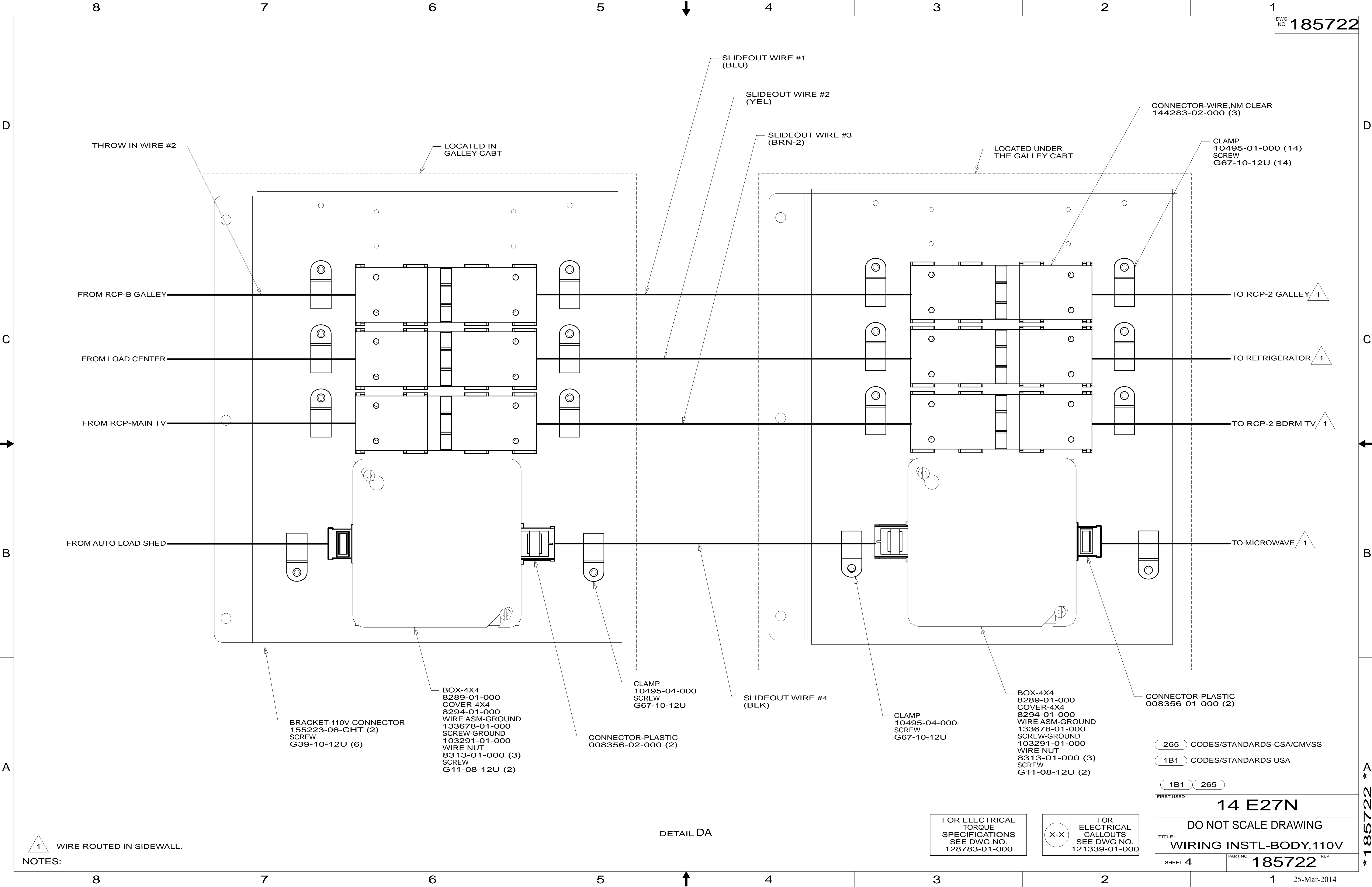
FIRST USED	
14 E27N	
DO NOT SCALE DRAWING	
WIRING INSTL-BODY, 110V	
SHEET 3	PART NO 185722
REV 25-Mar-2014	

FOR ELECTRICAL TORQUE SPECIFICATIONS SEE DWG NO. 128783-01-000

FOR ELECTRICAL CALLOUTS SEE DWG NO. 121339-01-000

* 185722 * A

8 7 6 5 4 3 2 1



THROW IN WIRE #2

LOCATED IN GALLEY CABT

SLIDEOUT WIRE #1 (BLU)

SLIDEOUT WIRE #2 (YEL)

SLIDEOUT WIRE #3 (BRN-2)

LOCATED UNDER THE GALLEY CABT

CONNECTOR-WIRE,NM CLEAR 144283-02-000 (3)

CLAMP 10495-01-000 (14)
SCREW G67-10-12U (14)

FROM RCP-B GALLEY

TO RCP-2 GALLEY 1

FROM LOAD CENTER

TO REFRIGERATOR 1

FROM RCP-MAIN TV

TO RCP-2 BDRM TV 1

FROM AUTO LOAD SHED

TO MICROWAVE 1

BRACKET-110V CONNECTOR 155223-06-CHT (2)
SCREW G39-10-12U (6)

BOX-4X4 8289-01-000
COVER-4X4 8294-01-000
WIRE ASM-GROUND 133678-01-000
SCREW-GROUND 103291-01-000
WIRE NUT 8313-01-000 (3)
SCREW G11-08-12U (2)

CLAMP 10495-04-000
SCREW G67-10-12U

CONNECTOR-PLASTIC 008356-02-000 (2)

SLIDEOUT WIRE #4 (BLK)

CLAMP 10495-04-000
SCREW G67-10-12U

BOX-4X4 8289-01-000
COVER-4X4 8294-01-000
WIRE ASM-GROUND 133678-01-000
SCREW-GROUND 103291-01-000
WIRE NUT 8313-01-000 (3)
SCREW G11-08-12U (2)

CONNECTOR-PLASTIC 008356-01-000 (2)

265 CODES/STANDARDS-CSA/CMVSS

1B1 CODES/STANDARDS USA

1B1 265

FIRST USED 14 E27N

DO NOT SCALE DRAWING

TITLE: WIRING INSTL-BODY,110V

SHEET 4 PART NO 185722 REV

FOR ELECTRICAL TORQUE SPECIFICATIONS SEE DWG NO. 128783-01-000

FOR ELECTRICAL CALLOUTS SEE DWG NO. 121339-01-000

DETAIL DA

NOTES:
1 WIRE ROUTED IN SIDEWALL.

* 185722 * A

