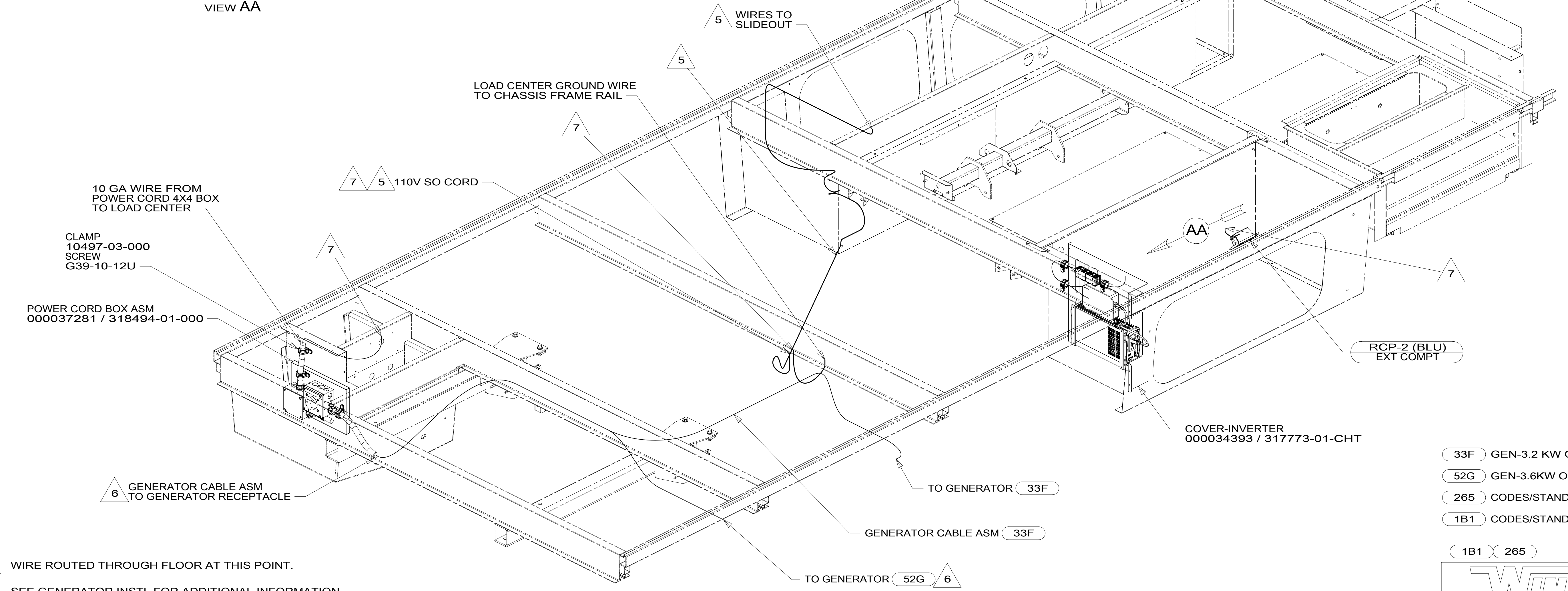


VIEW AA



- 7 WIRE ROUTED THROUGH FLOOR AT THIS POINT.
- 6 SEE GENERATOR INSTL FOR ADDITIONAL INFORMATION.
- 5 WIRE IS PART OF WIRE ASM-CHASSIS.
- 4 CONNECT INVERTER INPUT TO BRN WIRE AND INVERTER OUTPUT TO BRN-2 WIRE.
- 3. ALL GROUND WIRE TO BE COVERED WITH TUBING 8041-02-000.
- 2. ALL 110V WIRE TO BE CLAMPED WITH CLAMP 10497-05-000 WITHIN 200MM OF OUTLET BOXES, USE SCREW G67-10-12U.
- 1. AT MINIMUM ALL WIRES TO BE SUPPORTED AND SECURED PER CODE REQUIREMENTS. USE CLAMP 10495 OR 10497 OR WIRE TIE 8343 OR 108046 AND SCREW G67-XX-XXX OR G56-XX-XXX AS APPROPRIATE FOR INSTALLATION.

8 PLUG TRANSFER SWITCH INTO 110V OUTLET IN INVERTER FRONT.

- 33F GEN-3.2 KW ONAN DIESEL
- 52G GEN-3.6KW ONAN LP MICROQUIET
- 265 CODES/STANDARDS-CSA/CMVSS
- 1B1 CODES/STANDARDS USA



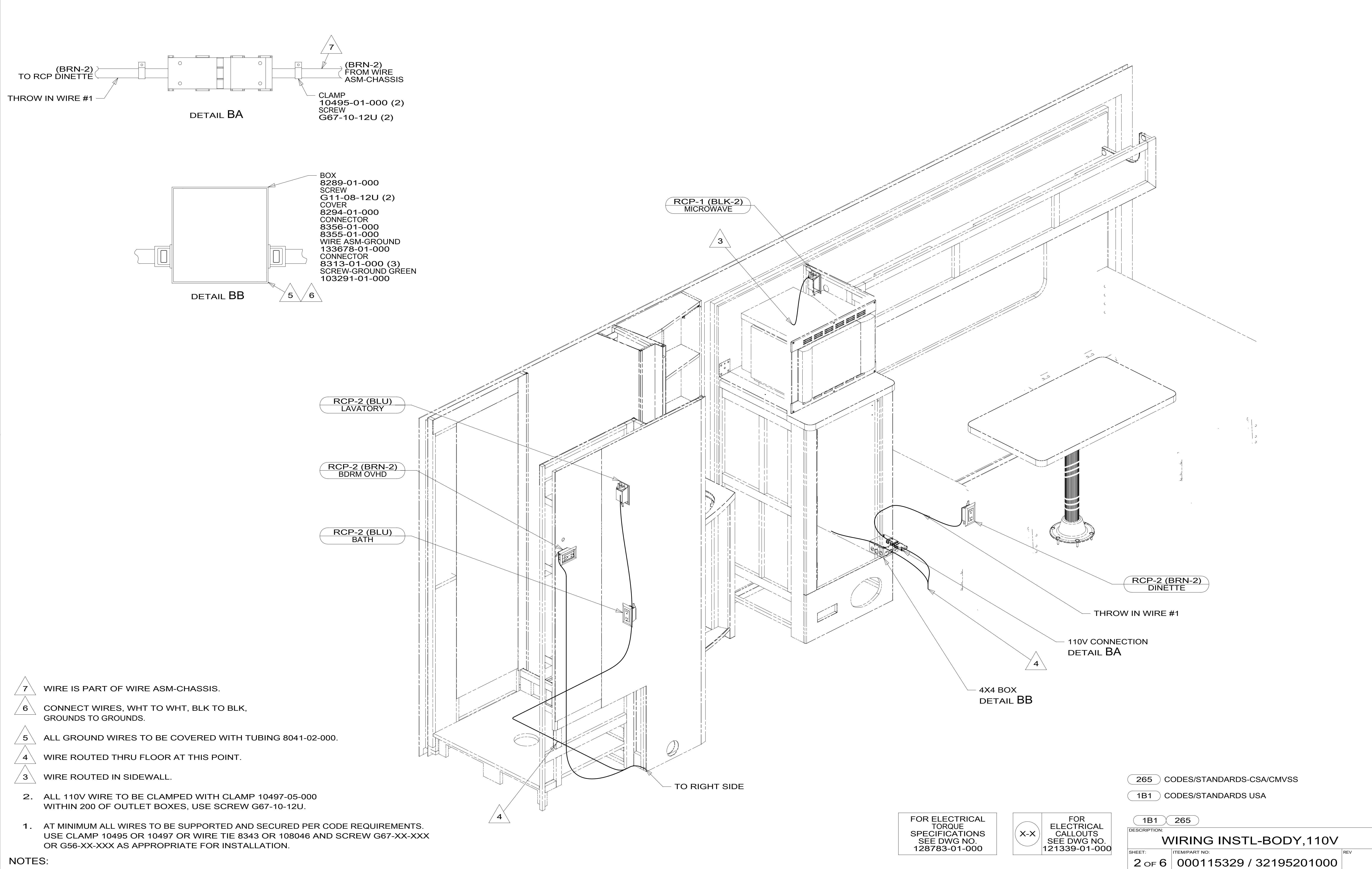
DSNR:	ALL DIMENSIONS ARE IN MILLIMETERS
DIFTR:	
UNSPECIFIED TOLERANCES:	MATERIAL:
WHOLE DIM (X) : 3	
ONE-PLACE (X.X) : 1.5	
TWO-PLACE (X.XX) : 0.50	
ANGLE : 1°	
REFER TO ES0018 FOR FASTENER TIGHTENING GUIDELINES	WEIGHT: (LBS) FIRST USED: 18 524J

FOR ELECTRICAL TORQUE SPECIFICATIONS SEE DWG NO. 128783-01-000

FOR ELECTRICAL CALLOUTS SEE DWG NO. 121339-01-000

DESCRIPTION: WIRING INSTL-BODY, 110V		
SHEET: 1 OF 6	ITEM/PART NO: 000115329 / 32195201000	REV:
REF:		1 15-Jan-2018

NOTES:



- 7 WIRE IS PART OF WIRE ASM-CHASSIS.
 - 6 CONNECT WIRES, WHT TO WHT, BLK TO BLK, GROUNDS TO GROUNDS.
 - 5 ALL GROUND WIRES TO BE COVERED WITH TUBING 8041-02-000.
 - 4 WIRE ROUTED THRU FLOOR AT THIS POINT.
 - 3 WIRE ROUTED IN SIDEWALL.
2. ALL 110V WIRE TO BE CLAMPED WITH CLAMP 10497-05-000 WITHIN 200 OF OUTLET BOXES, USE SCREW G67-10-12U.
1. AT MINIMUM ALL WIRES TO BE SUPPORTED AND SECURED PER CODE REQUIREMENTS. USE CLAMP 10495 OR 10497 OR WIRE TIE 8343 OR 108046 AND SCREW G67-XX-XXX OR G56-XX-XXX AS APPROPRIATE FOR INSTALLATION.

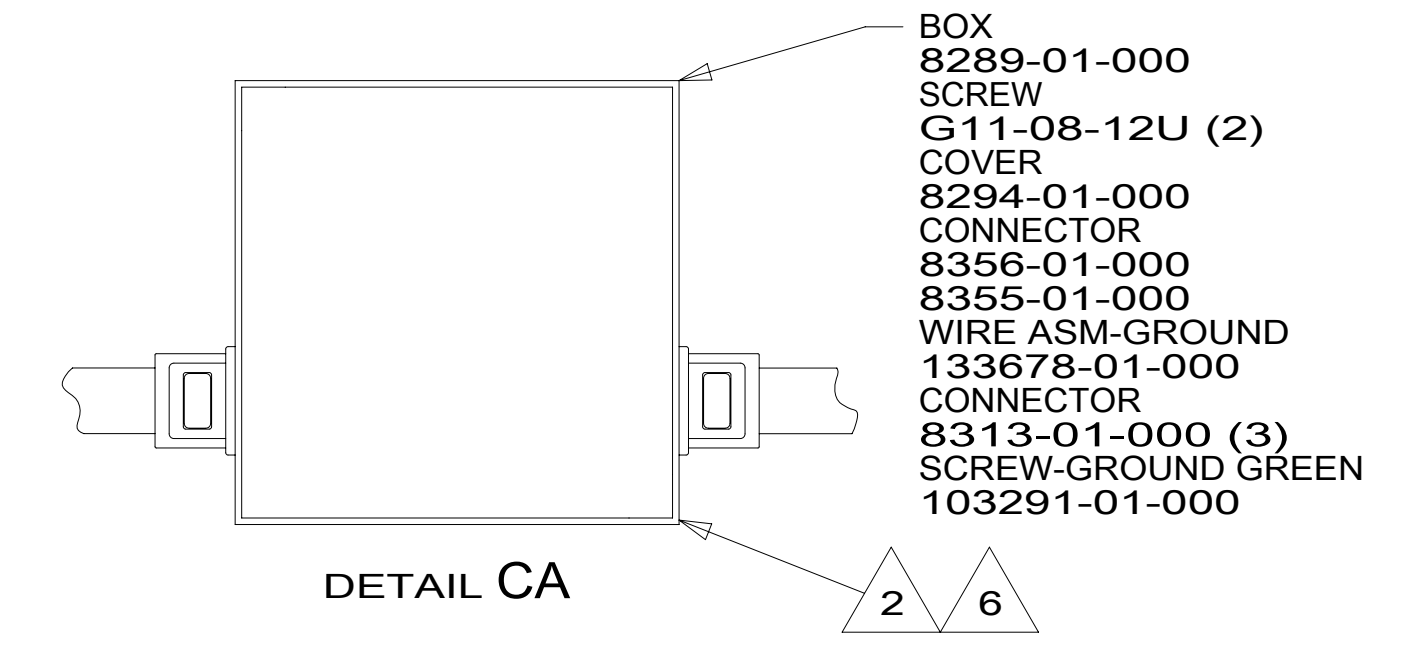
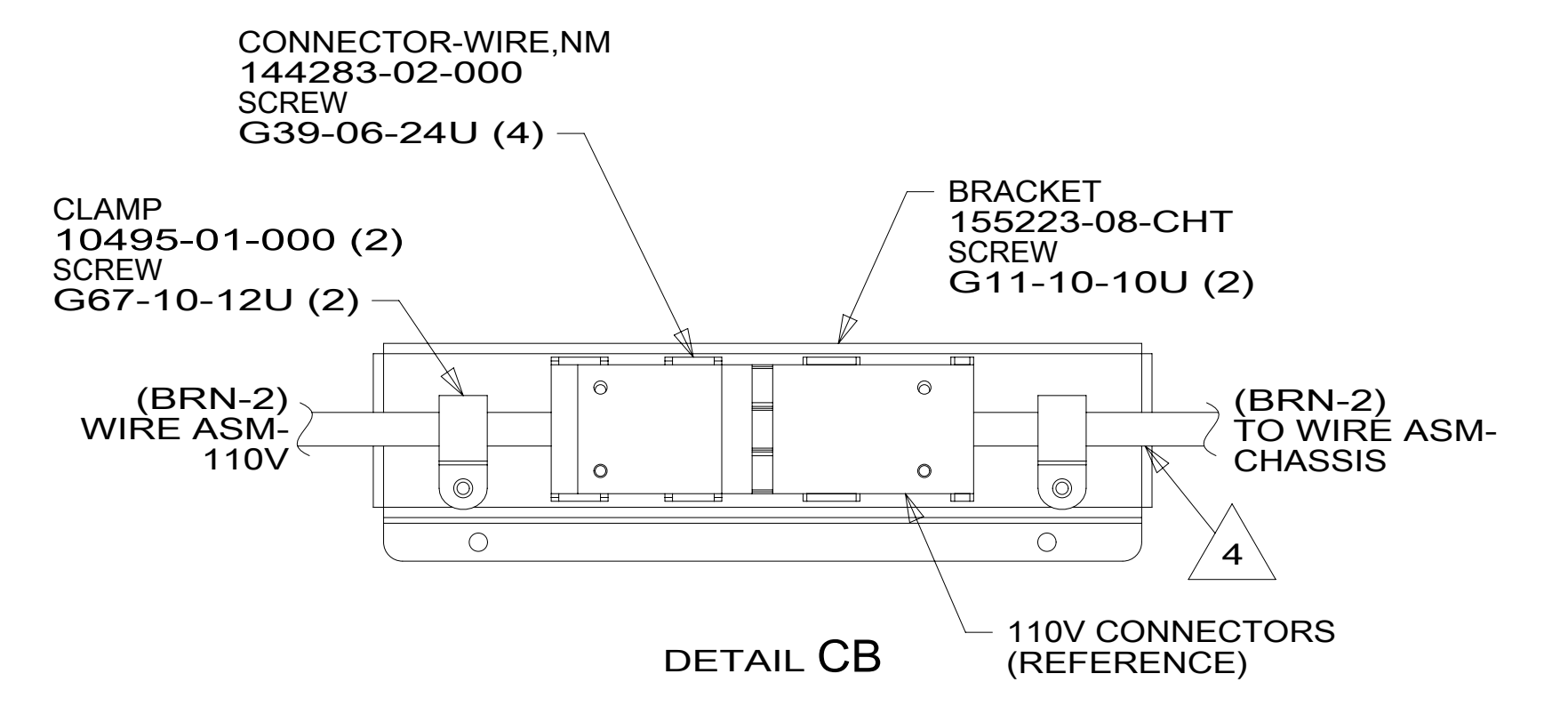
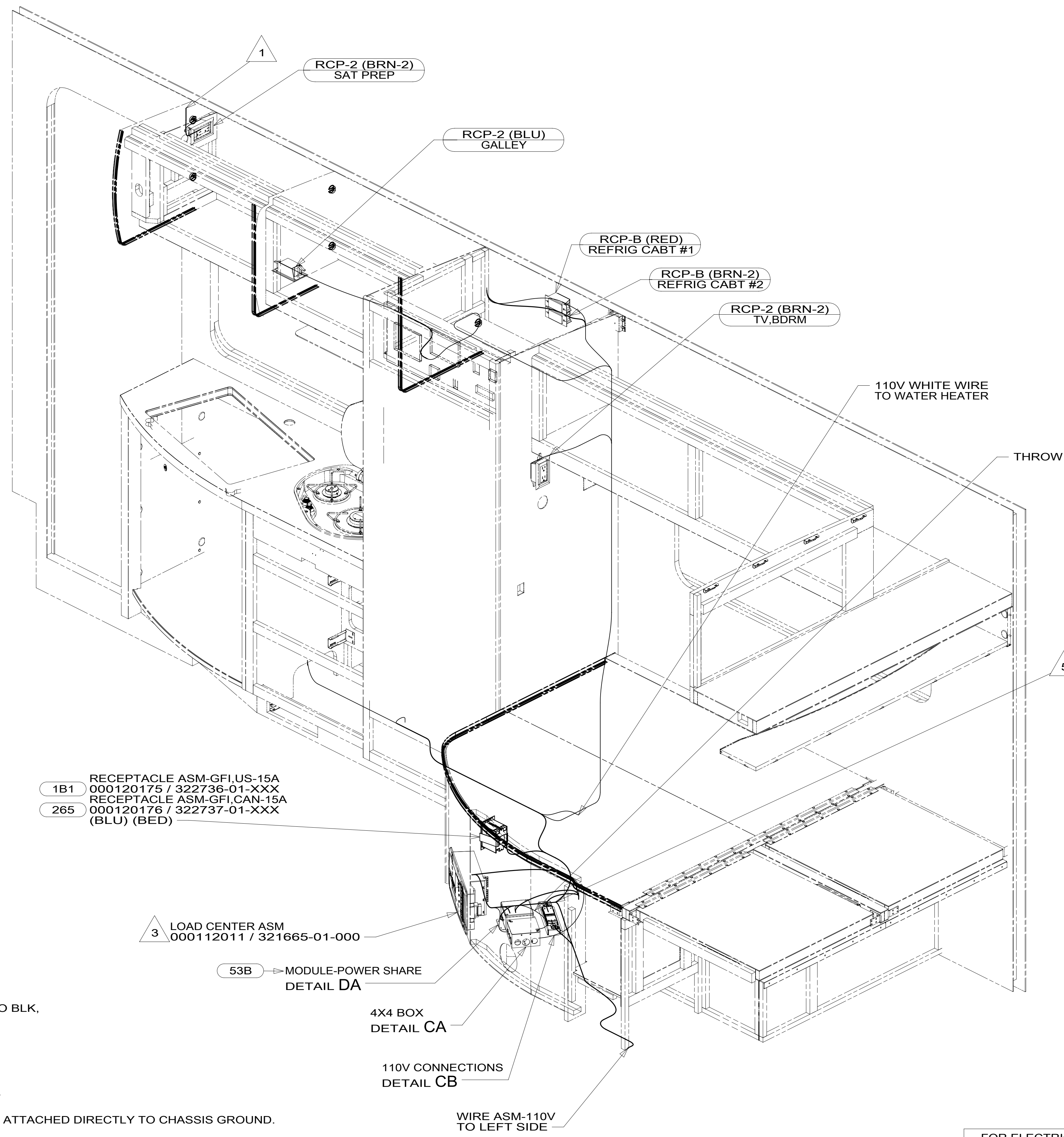
NOTES:

FOR ELECTRICAL TORQUE SPECIFICATIONS SEE DWG NO. 128783-01-000

FOR ELECTRICAL CALLOUTS SEE DWG NO. 121339-01-000

- 265 CODES/STANDARDS-CSA/CMVSS
- 1B1 CODES/STANDARDS USA

DESCRIPTION:		1B1 265	
WIRING INSTL-BODY, 110V			
SHEET:	ITEM/PART NO.:	REV	
2 OF 6	000115329 / 32195201000		



1B1 RECEPTACLE ASM-GFI,US-15A
000120175 / 322736-01-XXX
265 RECEPTACLE ASM-GFI,CAN-15A
000120176 / 322737-01-XXX
(BLU) (BED)

3 LOAD CENTER ASM
000112011 / 321665-01-000

53B MODULE-POWER SHARE
DETAIL DA

4X4 BOX
DETAIL CA

110V CONNECTIONS
DETAIL CB

WIRE ASM-110V
TO LEFT SIDE

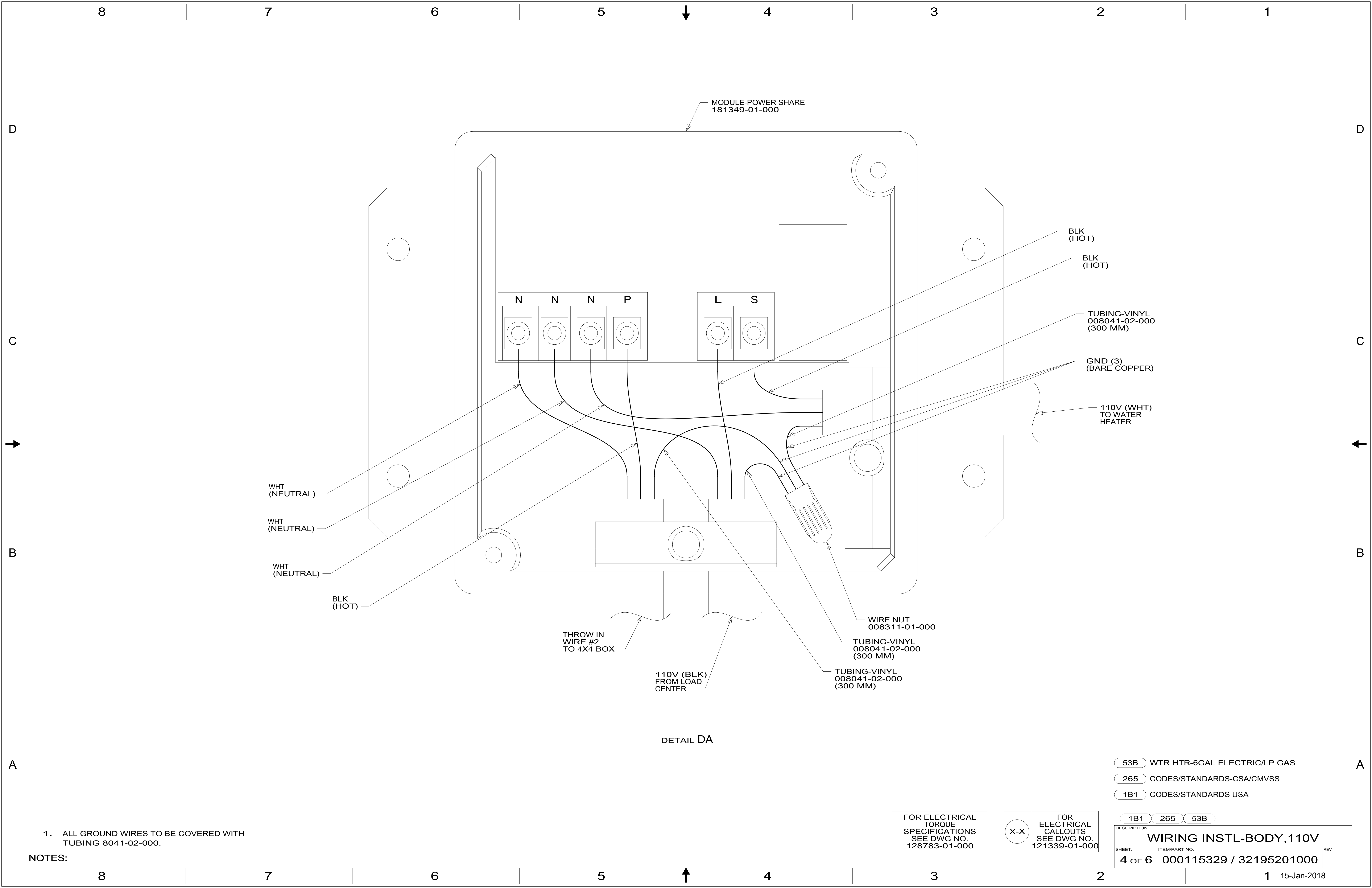
- NOTES:
- 6 CONNECT WIRES, WHT TO WHT, BLK TO BLK, GROUNDS TO GROUNDS.
 - 5 (BRN) 3400 LOOP TO LEFT SIDE AND (BLU) 4200 DROP TO LEFT SIDE.
 - 4 WIRE IS PART OF WIRE ASM-CHASSIS.
 - 3 LOAD CENTER GROUND WIRES MUST BE ATTACHED DIRECTLY TO CHASSIS GROUND.
 - 2 ALL GROUND WIRES TO BE COVERED WITH TUBING 8041-02-000.
 - 1 WIRE ROUTED IN ROOF.

FOR ELECTRICAL TORQUE SPECIFICATIONS SEE DWG NO. 128783-01-000

FOR ELECTRICAL CALLOUTS SEE DWG NO. 121339-01-000

- 53B WTR HTR-6GAL ELECTRIC/LP GAS
- 265 CODES/STANDARDS-CSA/CMVSS
- 1B1 CODES/STANDARDS USA

DESCRIPTION:		1B1 265	
WIRING INSTL-BODY, 110V			
SHEET:	ITEM/PART NO.:	REV:	
3 OF 6	000115329 / 32195201000		



MODULE-POWER SHARE
181349-01-000

BLK
(HOT)

BLK
(HOT)

TUBING-VINYL
008041-02-000
(300 MM)

GND (3)
(BARE COPPER)

110V (WHT)
TO WATER
HEATER

N N N P

L S

WHT
(NEUTRAL)

WHT
(NEUTRAL)

WHT
(NEUTRAL)

BLK
(HOT)

THROW IN
WIRE #2
TO 4X4 BOX

110V (BLK)
FROM LOAD
CENTER

WIRE NUT
008311-01-000

TUBING-VINYL
008041-02-000
(300 MM)

TUBING-VINYL
008041-02-000
(300 MM)

DETAIL DA

- 53B WTR HTR-6GAL ELECTRIC/LP GAS
- 265 CODES/STANDARDS-CSA/CMVSS
- 1B1 CODES/STANDARDS USA

1B1 265 53B

DESCRIPTION:
WIRING INSTL-BODY, 110V

SHEET: 4 OF 6 ITEM/PART NO: 000115329 / 32195201000 REV

FOR ELECTRICAL
TORQUE
SPECIFICATIONS
SEE DWG NO.
128783-01-000

FOR
ELECTRICAL
CALLOUTS
SEE DWG NO.
121339-01-000

NOTES:
1. ALL GROUND WIRES TO BE COVERED WITH
TUBING 8041-02-000.

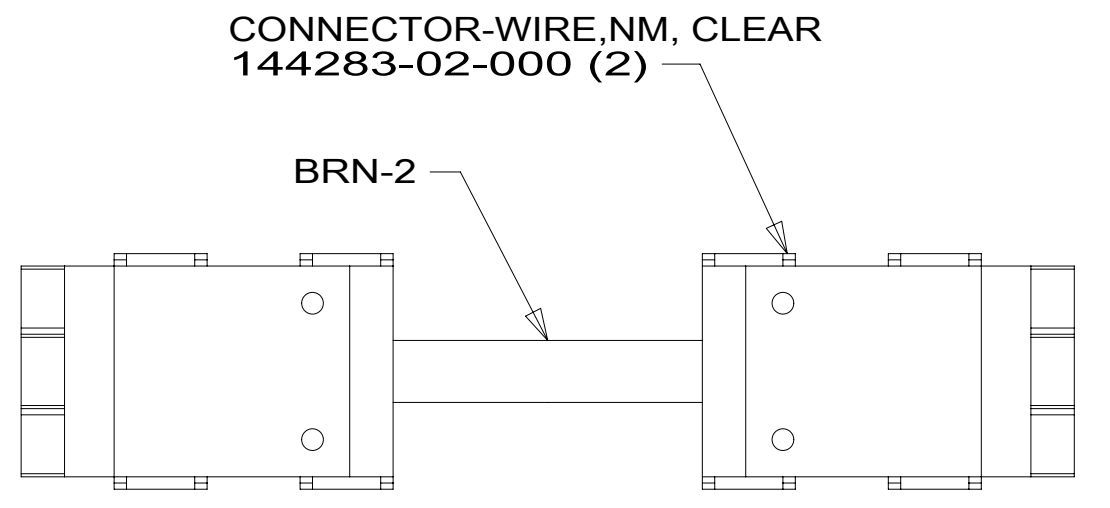
D

C

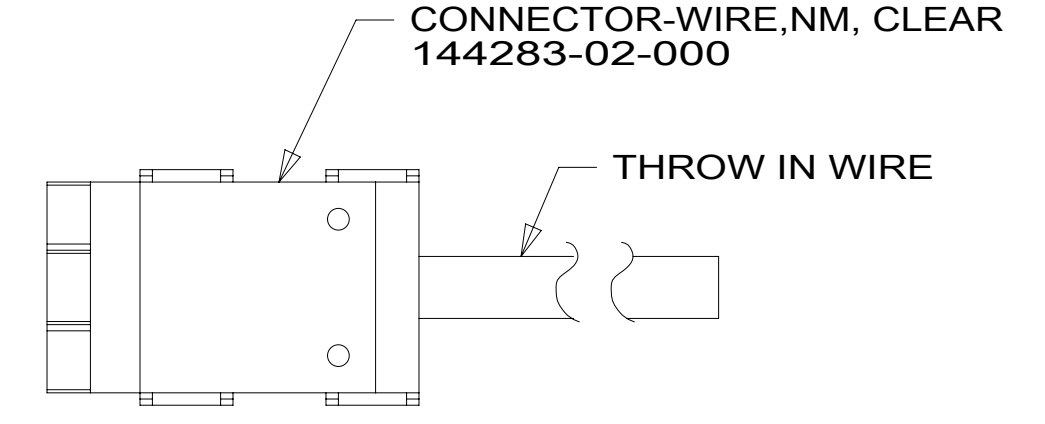
B

A

RED	1B1	136135-07-040
	265	136136-07-040
BLK	1B1	136135-06-012
	265	136136-06-012
BLK-2	1B1	△ 4
	265	△ 4
BRN	1B1	136131-03-030 △ 2
	265	136134-03-030 △ 2
BRN-2	1B1	136131-19-150 △ 3
	265	136134-19-150 △ 3
BLU	1B1	136131-02-185
	265	136134-02-185
WHT	1B1	136135-09-016 53B
	265	136136-09-016 53B
MAIN	1B1	136137-01-035
	265	136138-01-035
THROW IN WIRE #1	1B1	136131-05-014 △ 2
	265	136134-05-014 △ 2
THROW IN WIRE #2	1B1	136135-22-008 53B
	265	136136-22-008 53B
GENERATOR CABLE ASM	1B1	164957-07-035 33F
	265	164957-08-035 33F
GROUND		136145-02-020



DETAIL EA



DETAIL EB

- △ 4 WIRE IS PART OF WIRE ASM-CHASSIS.
- △ 3 FOR CONNECTOR INSTALLATION SEE DETAIL EA.
- △ 2 FOR CONNECTOR INSTALLATION SEE DETAIL EB.

NOTES:
1. ALL GROUND WIRES TO BE COVERED WITH TUBING 8041-02-000.

FOR ELECTRICAL TORQUE SPECIFICATIONS SEE DWG NO. 128783-01-000

FOR ELECTRICAL CALLOUTS SEE DWG NO. 121339-01-000

- 53B WTR HTR-6GAL ELECTRIC/LP GAS
- 33F GEN-3.2 KW ONAN DIESEL
- 265 CODES/STANDARDS-CSA/CMVSS
- 1B1 CODES/STANDARDS USA

DESCRIPTION:	1B1 265	
WIRING INSTL-BODY, 110V		
SHEET:	ITEM/PART NO:	REV
5 OF 6	000115329 / 32195201000	

