

8

7

6

5



4

3

2

1

LAMP-MARKER,  
W RED LENS,BLK  
193802-04-000  
SCREW  
G11-08-12U (EXT)(2)

LAMP ASM-PORCH  
184120-01-CHT  
SCREW  
G68-06-10E (2)  
CONNECTOR  
58028-01-000 (2)

LAMP-MARKER,  
W RED LENS,BLK  
193802-04-000  
SCREW  
G11-08-12U (EXT)(2)

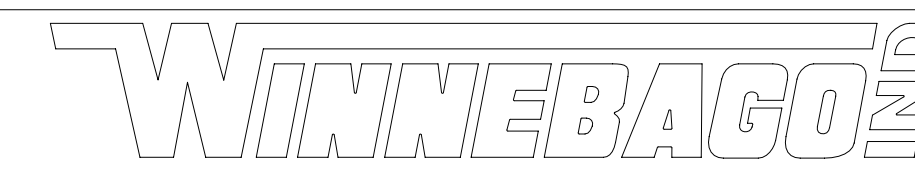
FOR ELECTRICAL  
TORQUE  
SPECIFICATIONS  
SEE DWG NO.  
128783-01-000

FOR  
ELECTRICAL  
CALLOUTS  
SEE DWG NO.  
121339-01-000

265 CODES/STANDARDS-CSA/CMVSS

1B1 CODES/STANDARDS USA

1B1 265



COPYRIGHT 2016 WINNEBAGO INDUSTRIES, INC.

DSNR:		ALL DIMENSIONS ARE IN MILLIMETERS	
DIFTR:		MATERIAL:	
UNSPECIFIED TOLERANCES:	WHOLE DIM (X) :	WEIGHT: (LBS)	FIRST USED:
ONE-PLACE (X.X) :	TWO-PLACE (X.XX) :		16 500-SE
ANGLE :			
REFER TO ES0018 FOR FASTENER TIGHTENING GUIDELINES			
DESCRIPTION: <b>WIRING INSTL-EXTERIOR LAMPS</b>			
SHEET:	ITEM/PART NO.:	REF:	REV
1 OF 3	000175374 / 30148801000		

1 25-Jan-2018

8

7

6

5



4

3

2

1

D

D

C

C

B

B

A

A

8

7

6

5



4

3

2

1

D

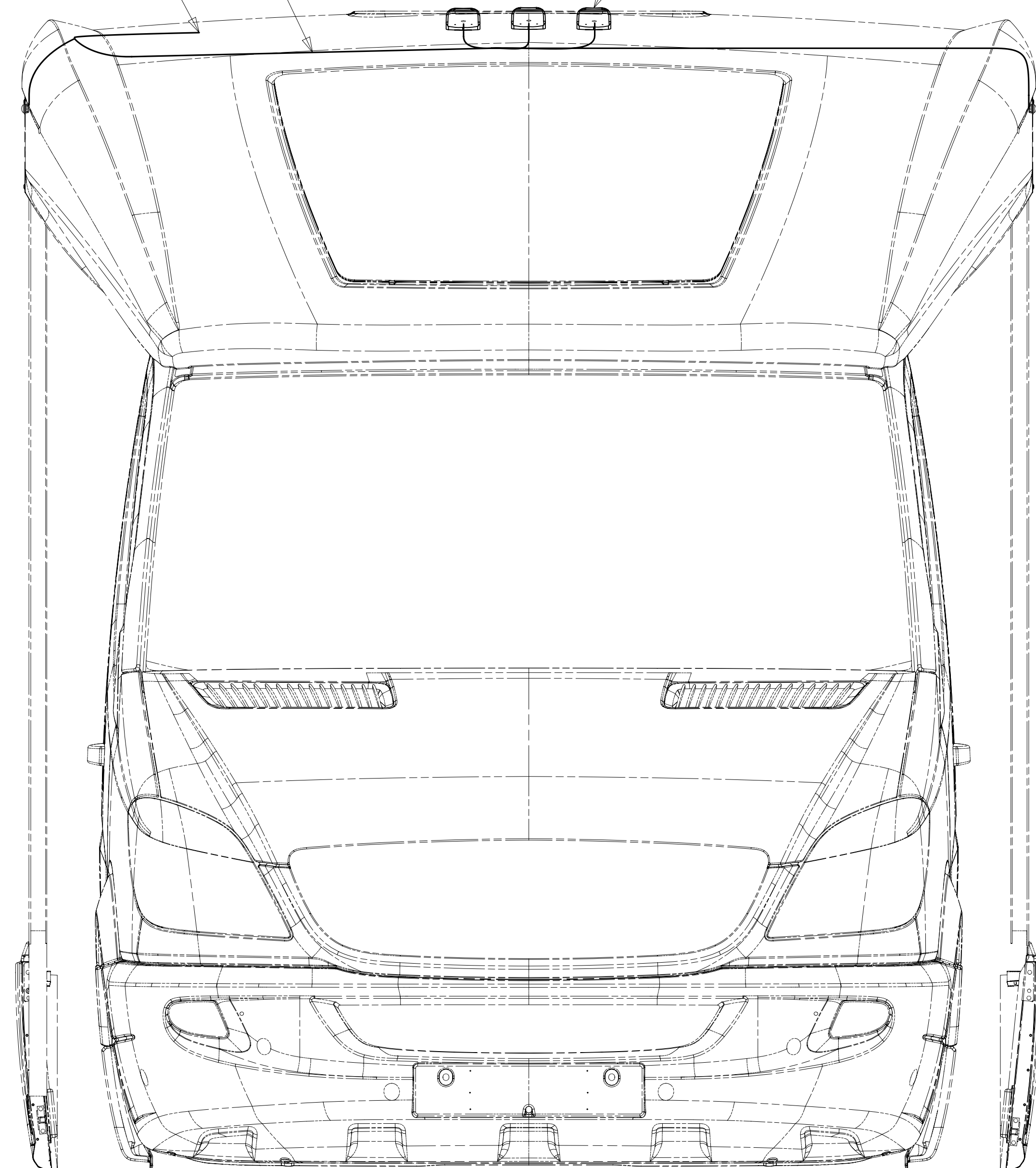
D

WIRE ASM-CLEARANCE LAMPS  
181140-01-000

2 PIN HOUSING  
TO WIRE ASM-ROOF

LAMP-CLEARANCE,AMBER  
170776-01-000 (3)  
SCREW  
G39-06-16U (6)

LAMP ASM-CLEARANCE  
179596-01-CHT (2)



C

C



B

B

A

A

8

7

6

5



4

3

2

1

265 CODES/STANDARDS-CSA/CMVSS

1B1 CODES/STANDARDS USA

1B1 265

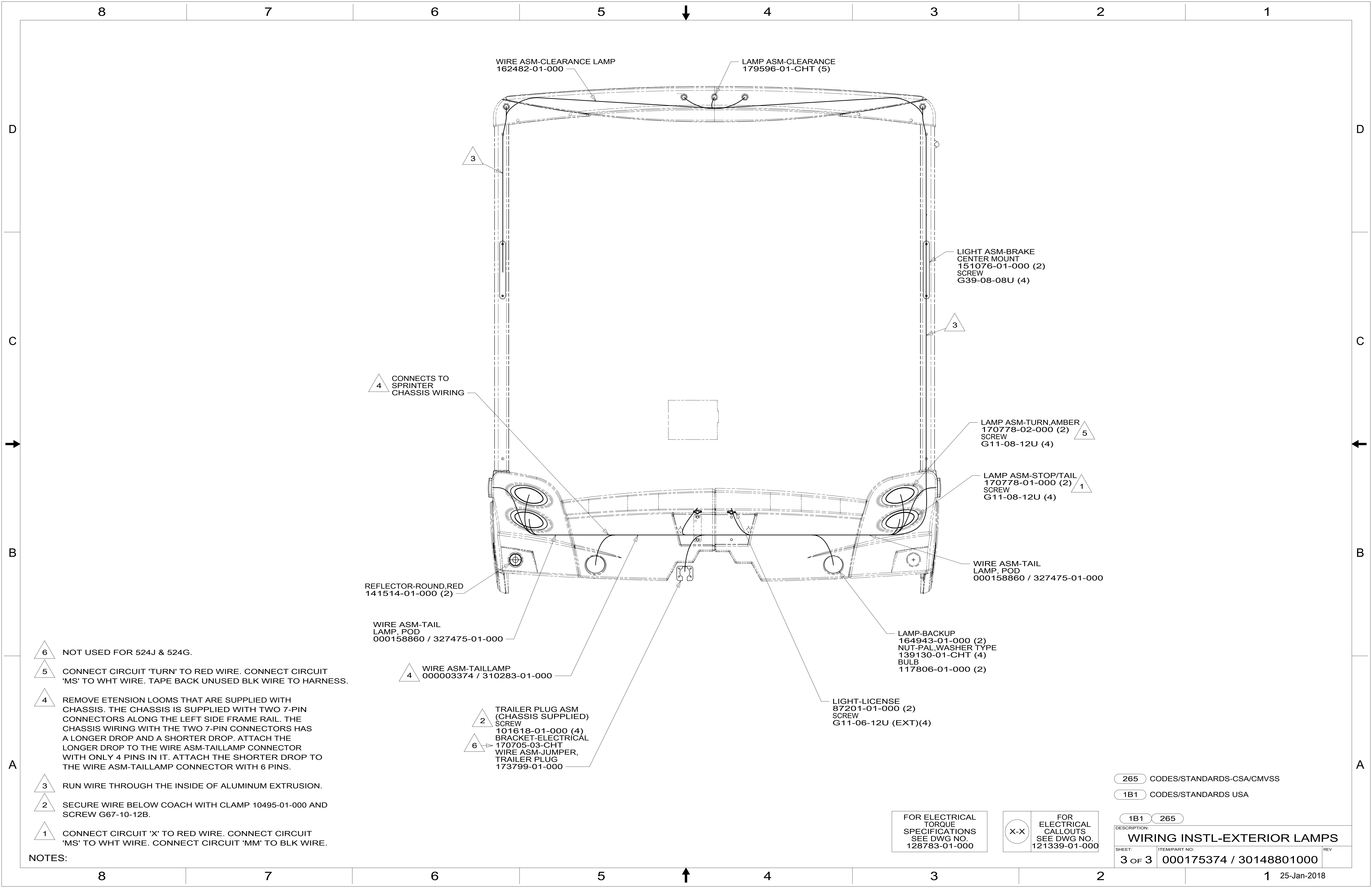
FOR ELECTRICAL  
TORQUE  
SPECIFICATIONS  
SEE DWG NO.  
128783-01-000

FOR  
ELECTRICAL  
CALLOUTS  
SEE DWG NO.  
121339-01-000

DESCRIPTION:  
**WIRING INSTL-EXTERIOR LAMPS**

SHEET:	ITEM/PART NO:	REV
2 OF 3	000175374 / 30148801000	

1 25-Jan-2018



- 6 NOT USED FOR 524J & 524G.
- 5 CONNECT CIRCUIT 'TURN' TO RED WIRE. CONNECT CIRCUIT 'MS' TO WHT WIRE. TAPE BACK UNUSED BLK WIRE TO HARNESS.
- 4 REMOVE EXTENSION LOOMS THAT ARE SUPPLIED WITH CHASSIS. THE CHASSIS IS SUPPLIED WITH TWO 7-PIN CONNECTORS ALONG THE LEFT SIDE FRAME RAIL. THE CHASSIS WIRING WITH THE TWO 7-PIN CONNECTORS HAS A LONGER DROP AND A SHORTER DROP. ATTACH THE LONGER DROP TO THE WIRE ASM-TAILLAMP CONNECTOR WITH ONLY 4 PINS IN IT. ATTACH THE SHORTER DROP TO THE WIRE ASM-TAILLAMP CONNECTOR WITH 6 PINS.
- 3 RUN WIRE THROUGH THE INSIDE OF ALUMINUM EXTRUSION.
- 2 SECURE WIRE BELOW COACH WITH CLAMP 10495-01-000 AND SCREW G67-10-12B.
- 1 CONNECT CIRCUIT 'X' TO RED WIRE. CONNECT CIRCUIT 'MS' TO WHT WIRE. CONNECT CIRCUIT 'MM' TO BLK WIRE.

NOTES:

FOR ELECTRICAL TORQUE SPECIFICATIONS SEE DWG NO. 128783-01-000

FOR ELECTRICAL CALLOUTS SEE DWG NO. 121339-01-000

265 CODES/STANDARDS-CSA/CMVSS  
 1B1 CODES/STANDARDS USA

DESCRIPTION:	
<b>WIRING INSTL-EXTERIOR LAMPS</b>	
SHEET:	ITEM/PART NO. REV
3 OF 3	000175374 / 30148801000