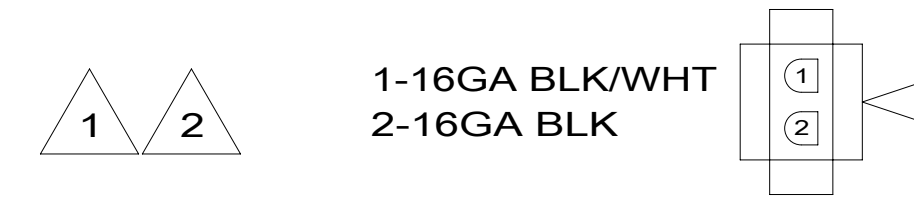
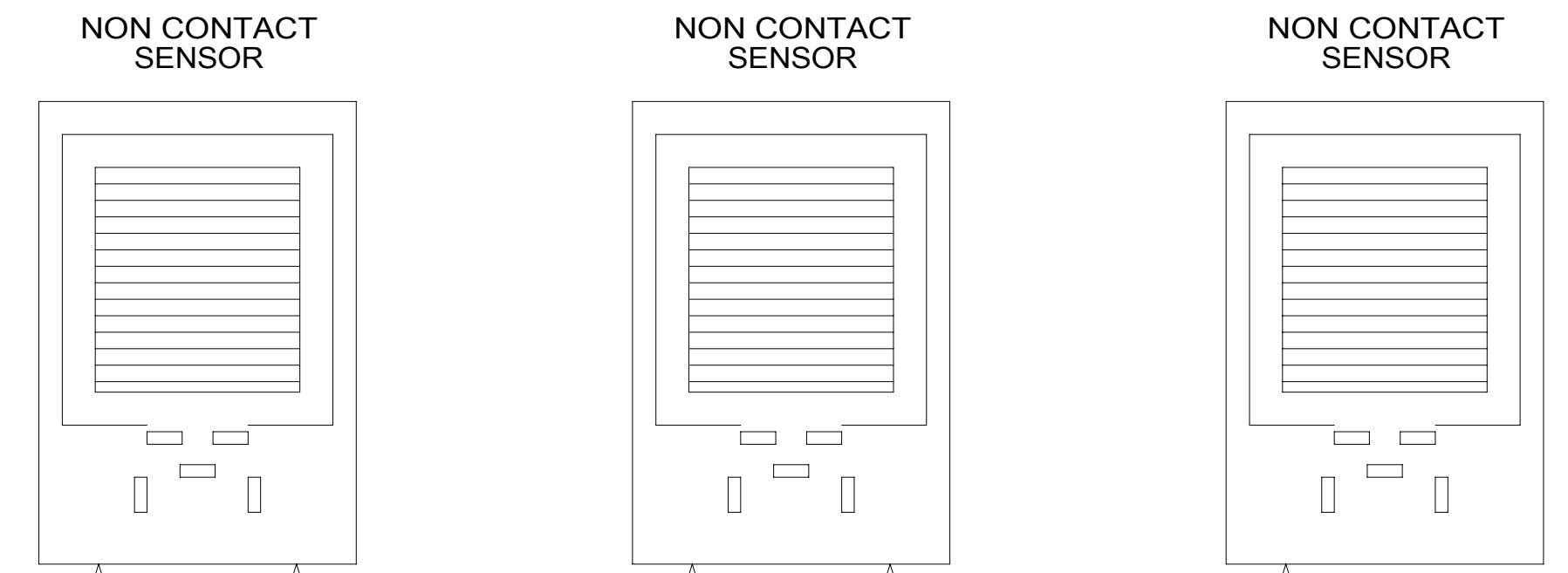
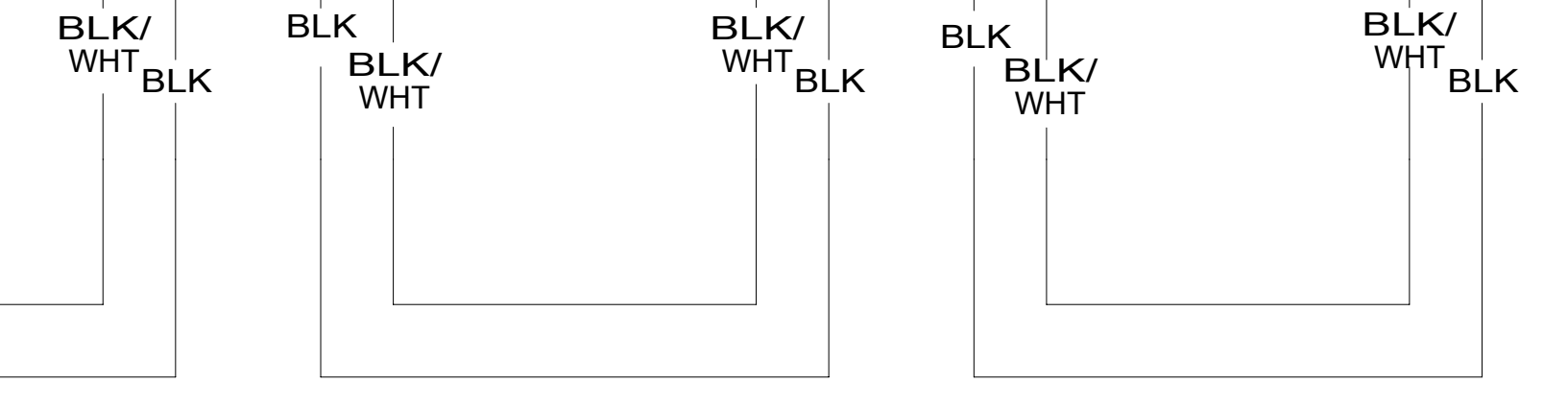


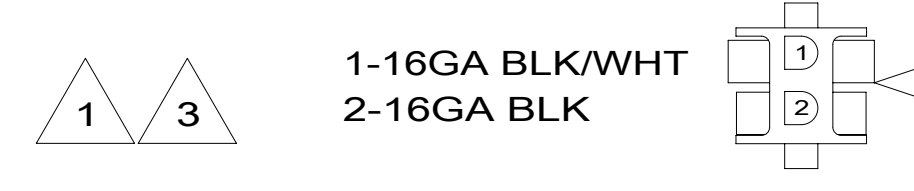
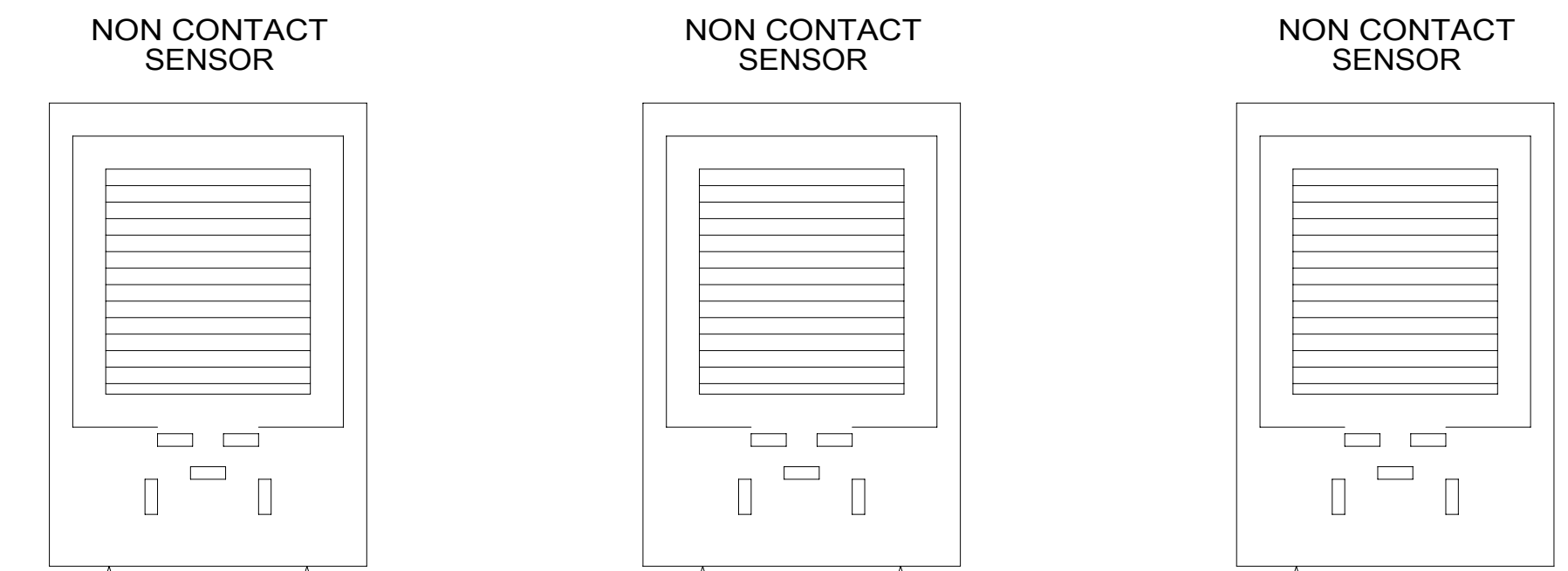
8 7 6 5 4 3 2 1



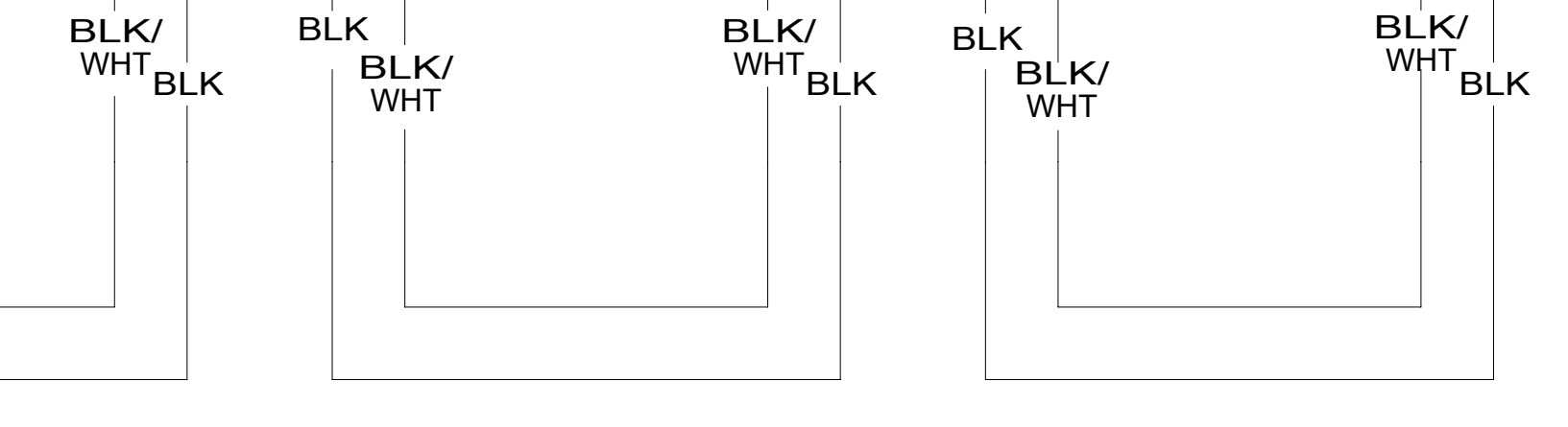
1-16GA BLK/WHT
2-16GA BLK



WIRING DIAGRAM-TANK,WATER
OR
WIRING DIAGRAM-TANK,MAIN
(WIRE ASM-151316 REV A)



1-16GA BLK/WHT
2-16GA BLK



WIRING DIAGRAM-AUX HOLDING
(WIRE ASM-151317 REV A)

- NOTES:
- 3 IF TWO MONITOR PANELS ARE UTILIZED THIS WIRE ASM CONNECTS TO WIRE ASM-TANK,DIODE PACK 151808-01 SHT2.
 - 2 IF TWO MONITOR PANELS ARE UTILIZED THIS WIRE ASM CONNECTS TO WIRE ASM-TANK,DIODE PACK 151808-02 SHT2.
 - 1 IF ONLY ONE MONITOR PANEL IS USED SEE WIRING DIAGRAM-BODY FOR ADDITIONAL INFORMATION.



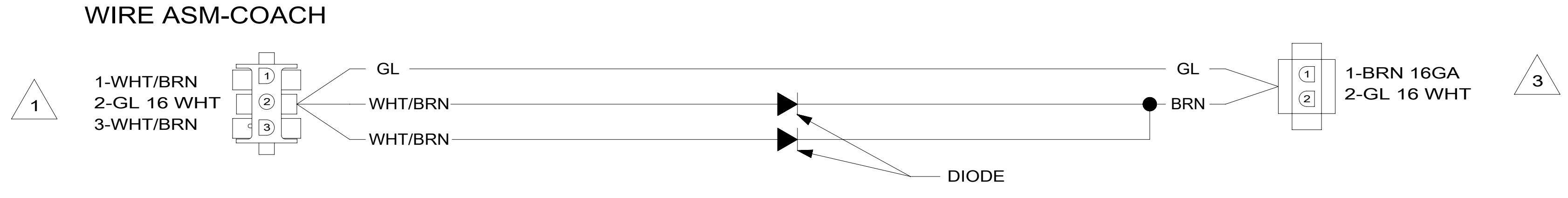
DSNR:		ALL DIMENSIONS ARE IN MILLIMETERS	
DIFFR:		MATERIAL:	
UNSPECIFIED TOLERANCES:			
WHOLE DIM (X) ±			
ONE-PLACE (X.X) ±			
TWO-PLACE (X.XX) ±		WEIGHT: (LBS)	
ANGLE ±		FIRST USED:	
REFER TO ES0018 FOR FASTENER TIGHTENING GUIDELINES			
DESCRIPTION:			
WIRING DIAGRAM-HOLDING TANKS			
SHEET:	ITEM/PART NO.:	REV	
1 OF 2	000200447 / 30013501000		
REF:		1 28-Jun-2017	

8 7 6 5 4 3 2 1

8 7 6 5 4 3 2 1

D

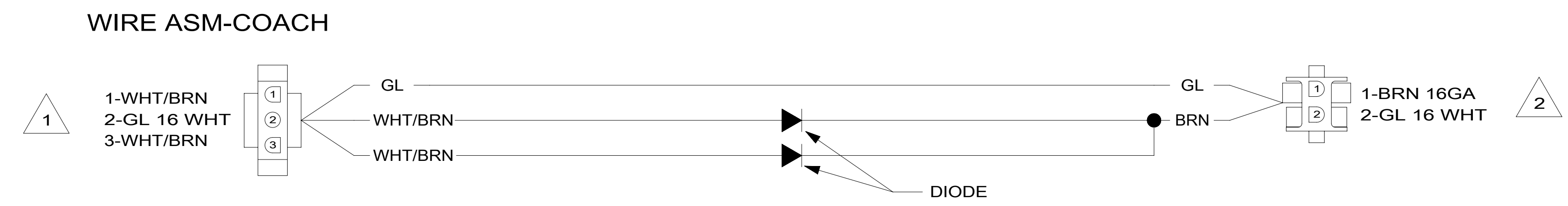
D



WIRING DIAGRAM-TANK,DIODE PACK
151808-01-000 REV A

C

C



WIRING DIAGRAM-TANK,DIODE PACK
151808-02-000 REV A

B

B

A

A

- NOTES:**
- 3 CONNECT TO WIRE ASM-TANK,AUX. SEE SHT 1.
 - 2 CONNECT WIRE ASM-TANK,WATER OR MAIN. SEE SHT 1.
 - 1 SEE WIRING DIAGRAM-BODY FOR ADDITIONAL INFORMATION.

DESCRIPTION: WIRING DIAGRAM-HOLDING TANKS		
SHEET: 2 OF 2	ITEM/PART NO: 000200447 / 30013501000	REV

8 7 6 5 4 3 2 1 28-Jun-2017