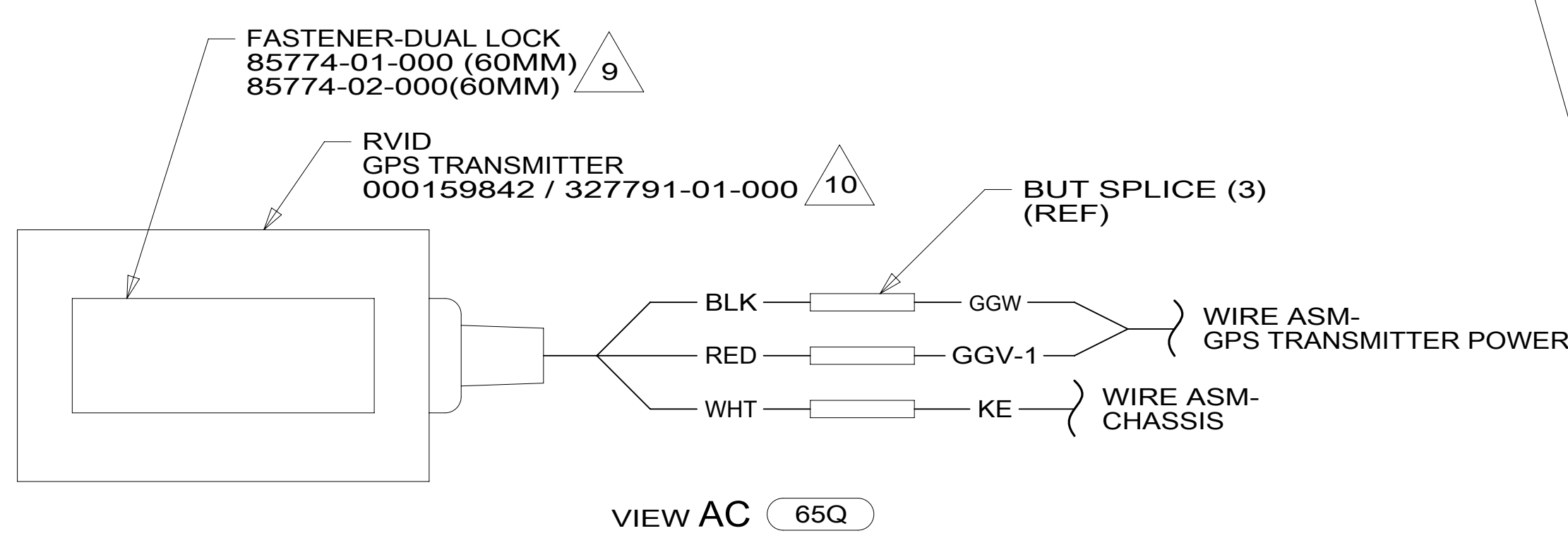


- NOTES:**
- 1. SECURE CONDUIT 41953, TAB AS REQUIRED, OVER ALL WIRES IN CONTACT WITH SHARP EDGES.
  - 2. USE WIRE TIES 8343-04-000 AND 116673-02-000 APPROXIMATELY 600MM ON CENTER UNLESS OTHERWISE SPECIFIED.
  - 3. SEE RADIO/MONITOR INSTL FOR ADDITIONAL INFORMATION.
  - 4. CUT LIGHT GREEN/RED WIRE FROM PARK BRAKE SWITCH AND RECONNECT TO CIRCUIT DY OF CHASSIS ASM AS SHOWN.
  - 5. SEE BATTERY INSTL FOR ADDITIONAL INFORMATION.
  - 6. FUSE LOCATED UNDER DASH BY STEERING COLUMN.
  - 7. SEE WIRING INSTL-BODY, 110V FOR ADDITIONAL INFORMATION.
  - 8. WIRE ASM-GPS TRANSMITTER POWER TO BE ROUTED FROM CHASSIS ELECTRICAL BOX TO TRANSMITTER LOCATED IN POCKET UNDER STEERING COLUMN
  - 9. ATTACH DUAL LOCK TO BOTTOM OF TRANSMITTER AND BOTTOM OF POCKET IN DASH.
  - 10. WHITE LABEL ON TRANSMITTER MUST FACE UPWARD.



FOR ELECTRICAL TORQUE SPECIFICATIONS SEE DWG NO. 128783-01-000

FOR ELECTRICAL CALLOUTS SEE DWG NO. 121339-01-000

65Q RENTAL - APOLLO  
265 CODES/STANDARDS-CSA/CMVSS  
1B1 CODES/STANDARDS USA

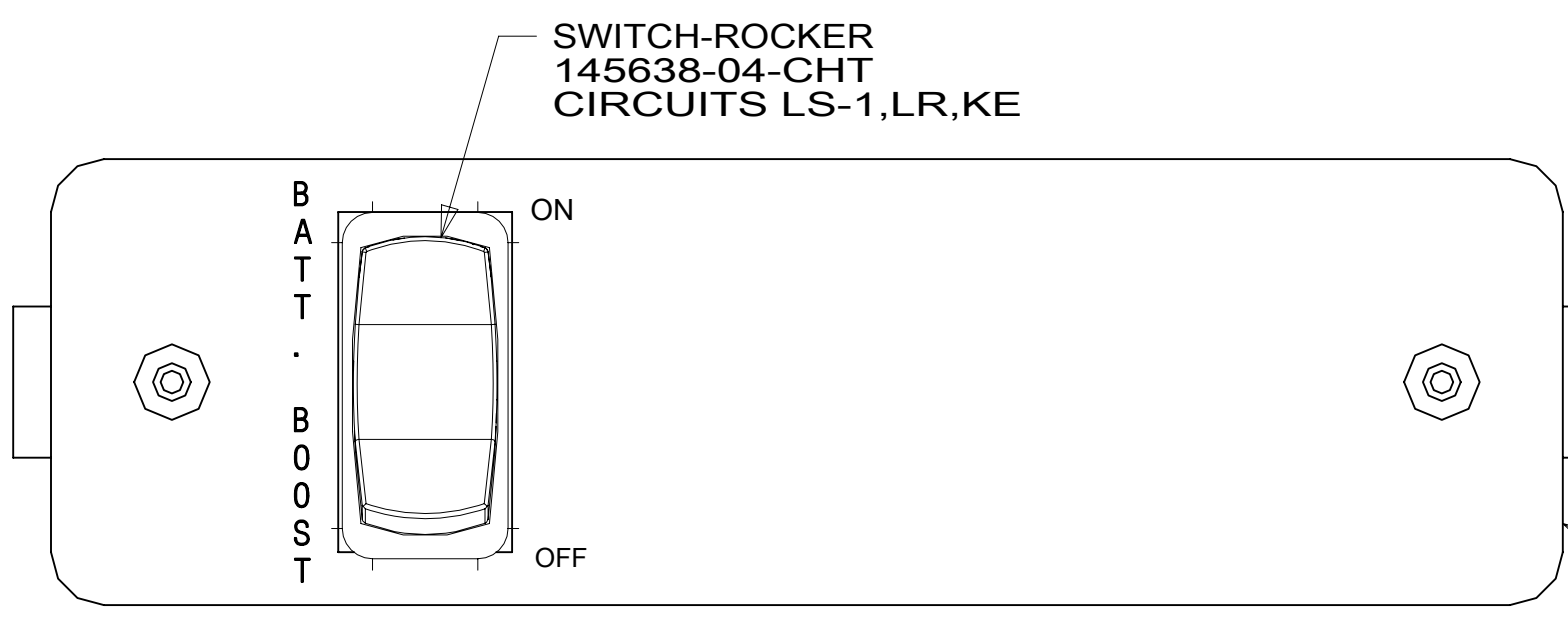
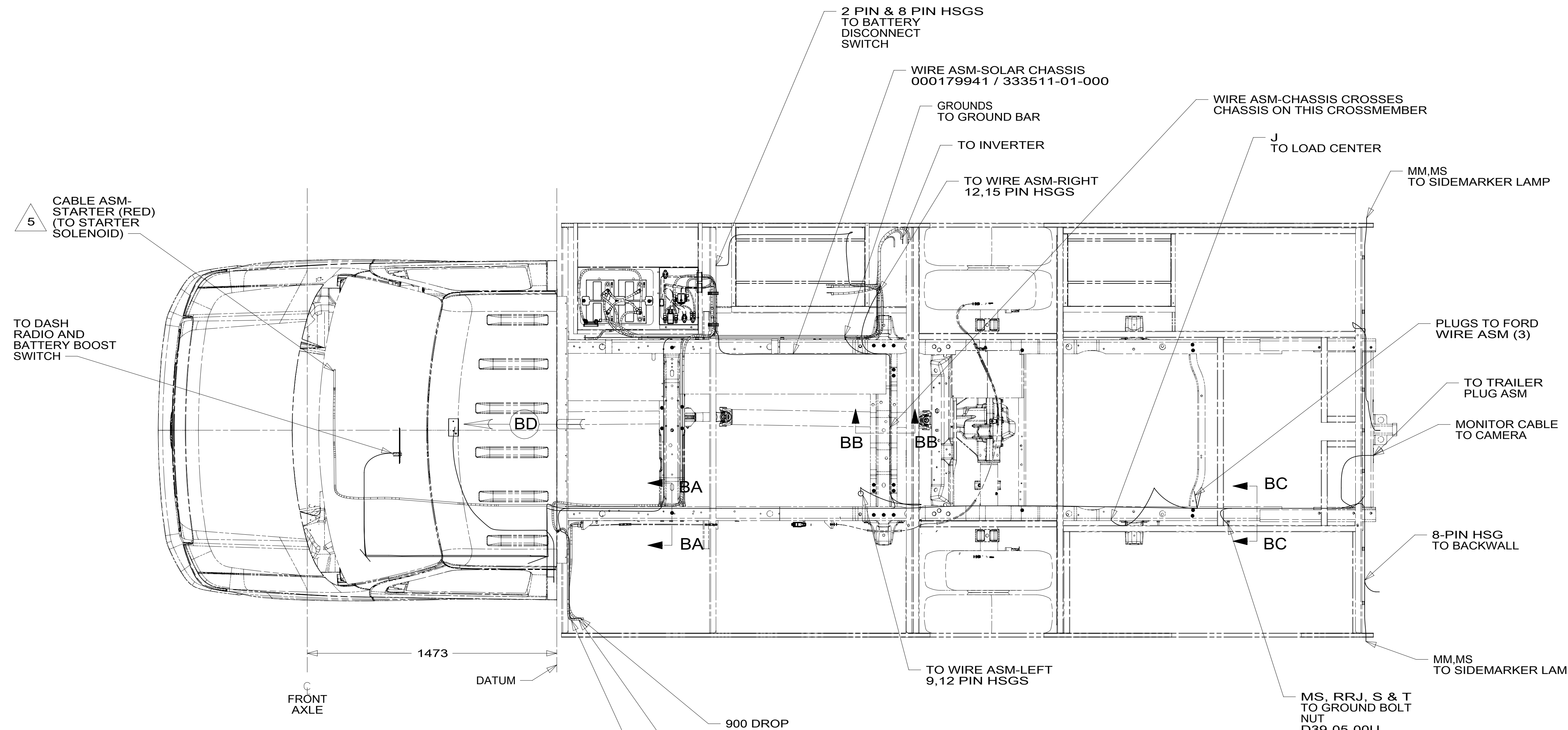
1B1 265

**WINNEBAGO**  
COPYRIGHT 2016 WINNEBAGO INDUSTRIES, INC.

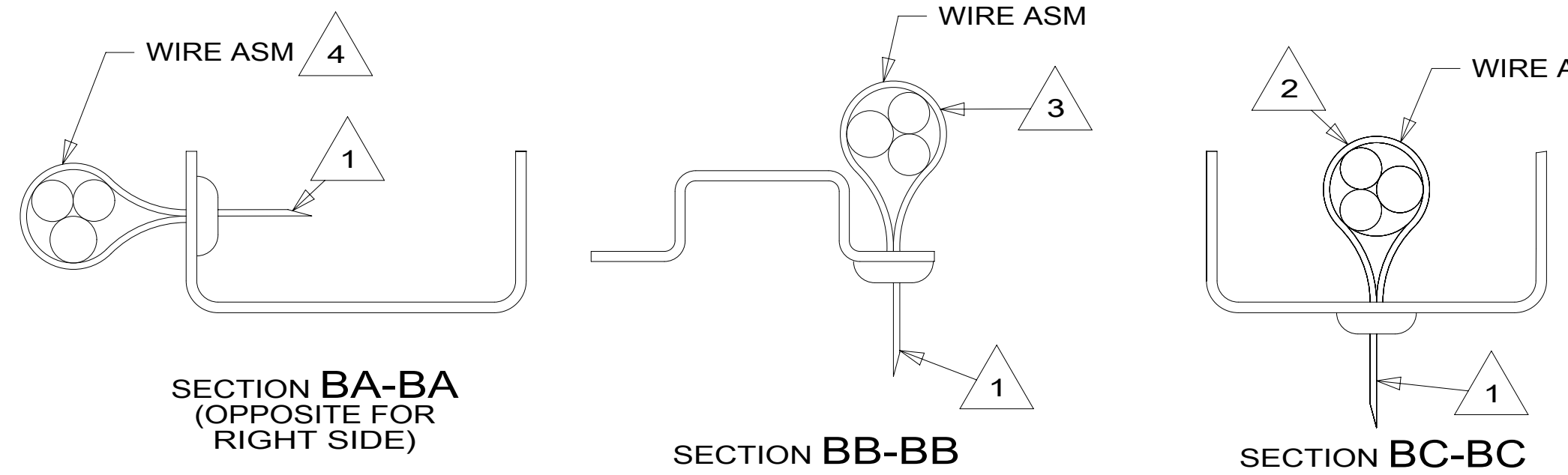
DSNR:	ALL DIMENSIONS ARE IN MILLIMETERS
DIFFR:	
UNSPECIFIED TOLERANCES:	MATERIAL:
WHOLE DIM (X) : 3	
ONE-PLACE (X.X) : 1.5	
TWO-PLACE (X.XX) : 0.50	
ANGLE : 1°	
REFER TO ES0018 FOR FASTENER TIGHTENING GUIDELINES	WEIGHT: (LBS) FIRST USED:
	20 900-SER
DESCRIPTION: <b>WIRING INSTL-CHASSIS</b>	
SHEET: 1 OF 2	ITEM/PART NO: 000172131 / 33158501000
REF:	REV:

8 7 6 5 4 3 2 1

D  
C  
B  
A



VIEW BD



- NOTES:
- 5 SEE BATTERY INSTL FOR ADDITIONAL INFORMATION.
  - 4 WIRES TO BE TIED TO CROSS MEMBER USING EXISTING HOLES.
  - 3 WIRES TO BE TIED TO TOP OF RAIL USING EXISTING HOLES.
  - 2 WIRES TO BE TIED TO INSIDE OF RAIL USING EXISTING HOLES.
  - 1 CUT OFF EXCESS END OF WIRE TIE.

FOR ELECTRICAL TORQUE SPECIFICATIONS SEE DWG NO. 128783-01-000

FOR ELECTRICAL CALLOUTS SEE DWG NO. 121339-01-000

265	CODES/STANDARDS-CSA/CMVSS
1B1	CODES/STANDARDS USA
1B1	265
DESCRIPTION: <b>WIRING INSTL-CHASSIS</b>	
SHEET: 2 OF 2	ITEM/PART NO: 000172131 / 33158501000
REV 06-Aug-2019	

8 7 6 5 4 3 2 1