

8

7

6

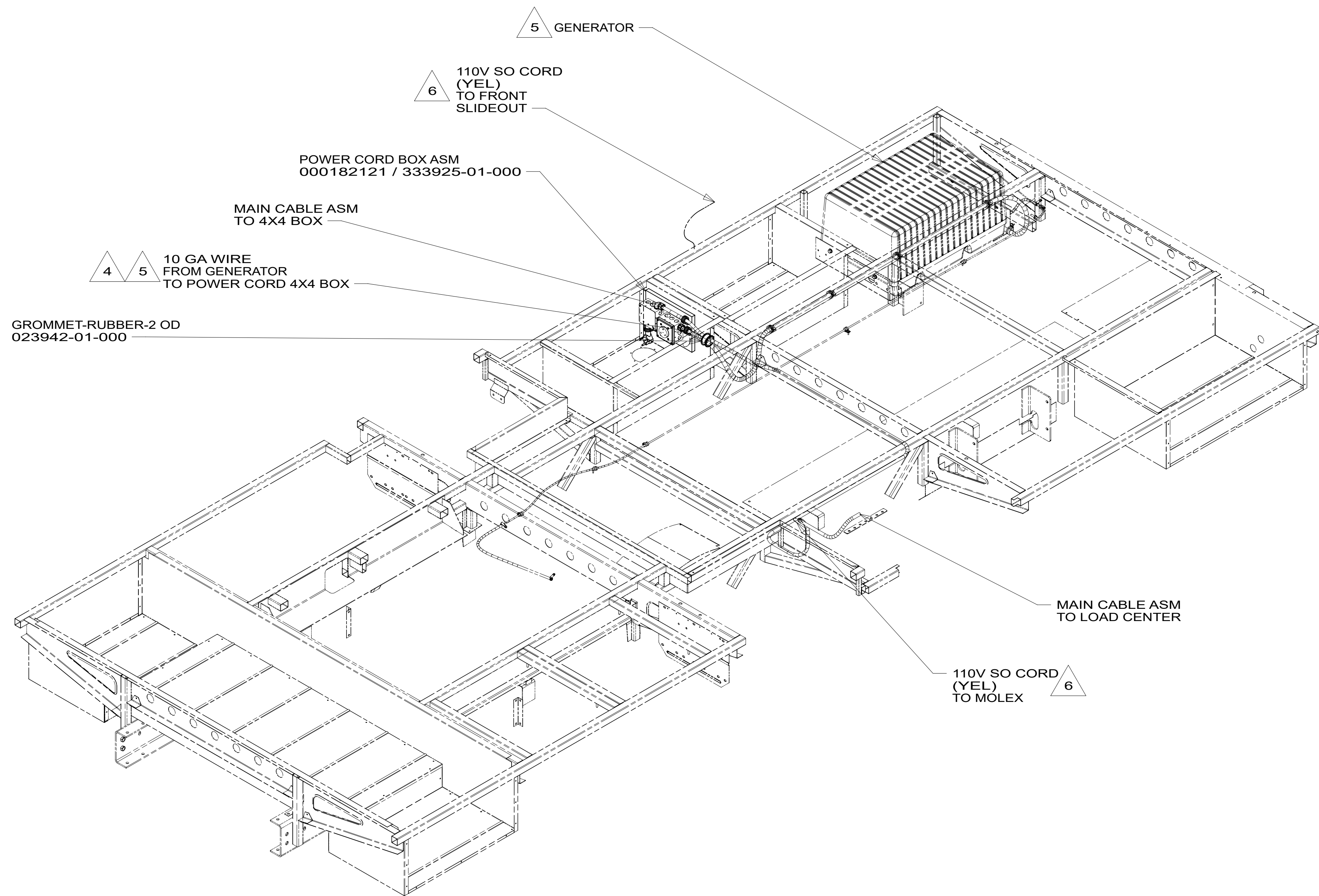
5


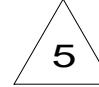

4

3



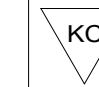
2

1



-  CORD AND CONNECTORS ARE PART OF WIRE ASM-CHASSIS.
 -  SEE GENERATOR INSTL FOR ADDITIONAL INFORMATION.
 -  SEE LOAD CENTER ASM FOR ADDITIONAL INFORMATION.
3. ALL GROUND WIRES TO BE COVERED WITH TUBING 8041-02-000.
 2. ALL 110V WIRE ARE TO BE CLAMPED WITH CLAMP 10497-05-000 WITHIN 200MM OF OUTLET BOXES, USE SCREW G67-10-12U.
 1. AT MINIMUM ALL WIRES TO BE SUPPORTED AND SECURED PER CODE REQUIREMENTS. USE CLAMP 10495 OR 10497 OR WIRE TIE 8343 OR 108046 AND SCREW G67-XX-XXX OR G56-XX-XXX AS APPROPRIATE FOR INSTALLATION.

NOTES:

	INDICATES A CRITICAL CHARACTERISTIC. ENSURE PROPER PROCEDURES ARE FOLLOWED.
	INDICATES A SIGNIFICANT CHARACTERISTIC. ENSURE PROPER PROCEDURES ARE FOLLOWED.
	INDICATES A KEY CHARACTERISTIC. ENSURE PROPER PROCEDURES ARE FOLLOWED.

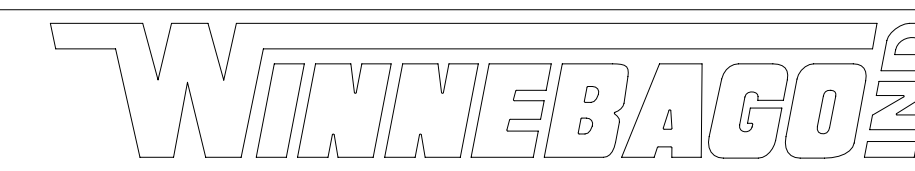
FOR ELECTRICAL TORQUE SPECIFICATIONS SEE DWG NO. 128783-01-000

FOR ELECTRICAL CALLOUTS SEE DWG 000228177 344479-01-000

265 CODES/STANDARDS-CSA/CMVSS

1B1 CODES/STANDARDS USA

1B1 265



DSNR:		ALL DIMENSIONS ARE IN MILLIMETERS	
DFFR:			
UNSPECIFIED TOLERANCES:		MATERIAL:	
WHOLE DIM (X)	: 3		
ONE-PLACE (X.X)	: 1.5		
TWO-PLACE (X.XX)	: 0.50		
ANGLE	: 1°		
REFER TO ES0018 FOR FASTENER TIGHTENING GUIDELINES		WEIGHT: (LBS)	FIRST USED:
			20 326T
WIRING INSTL-BODY,110V			
SHEET:	ITEM/PART NO.:	REV:	
1 OF 7	000199289 / 33667701000		

8

7

6

5

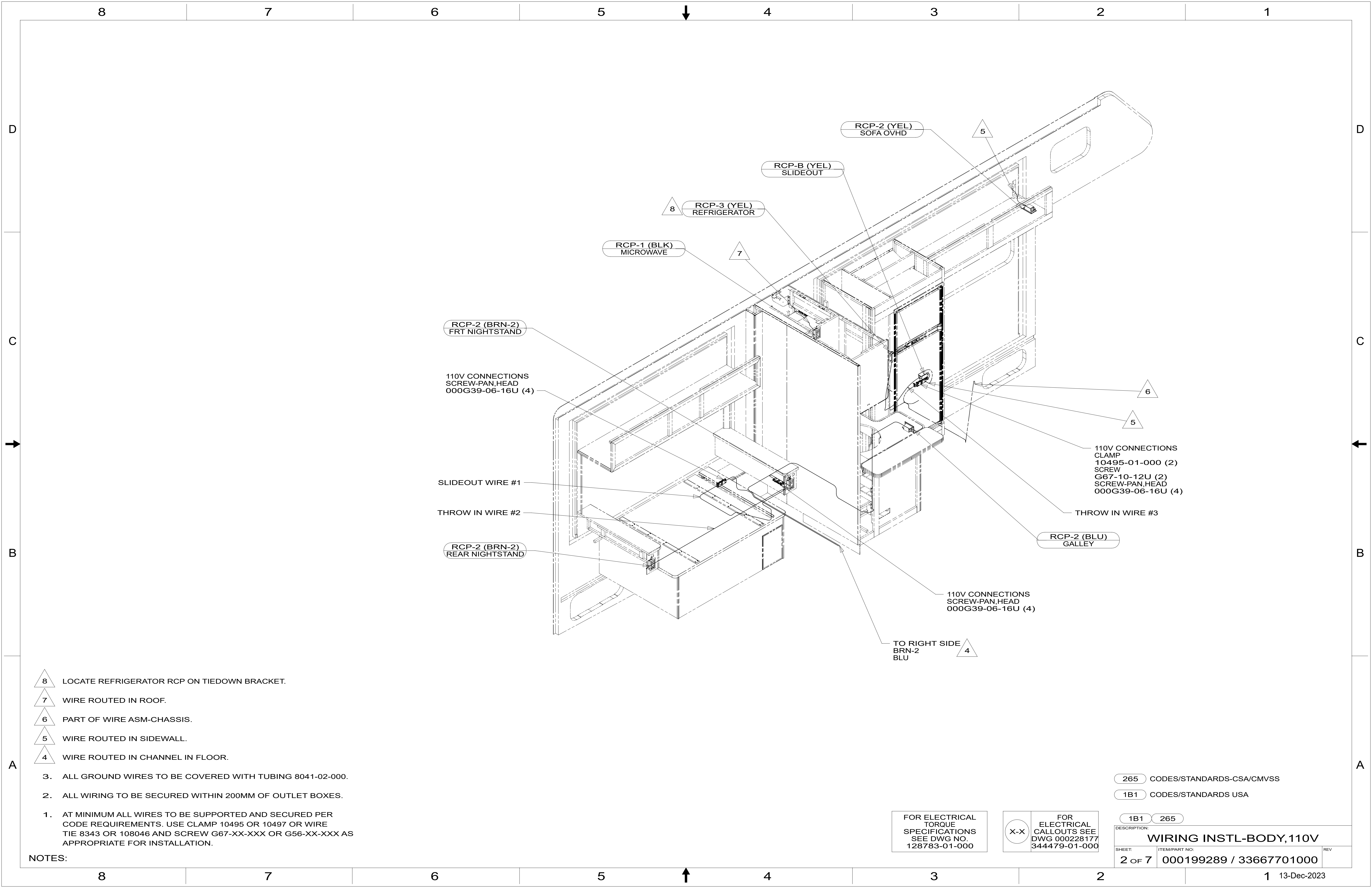
4

3

2

1

13-Dec-2023



- 8 LOCATE REFRIGERATOR RCP ON TIEDOWN BRACKET.
 - 7 WIRE ROUTED IN ROOF.
 - 6 PART OF WIRE ASM-CHASSIS.
 - 5 WIRE ROUTED IN SIDEWALL.
 - 4 WIRE ROUTED IN CHANNEL IN FLOOR.
3. ALL GROUND WIRES TO BE COVERED WITH TUBING 8041-02-000.
 2. ALL WIRING TO BE SECURED WITHIN 200MM OF OUTLET BOXES.
 1. AT MINIMUM ALL WIRES TO BE SUPPORTED AND SECURED PER CODE REQUIREMENTS. USE CLAMP 10495 OR 10497 OR WIRE TIE 8343 OR 108046 AND SCREW G67-XX-XXX OR G56-XX-XXX AS APPROPRIATE FOR INSTALLATION.

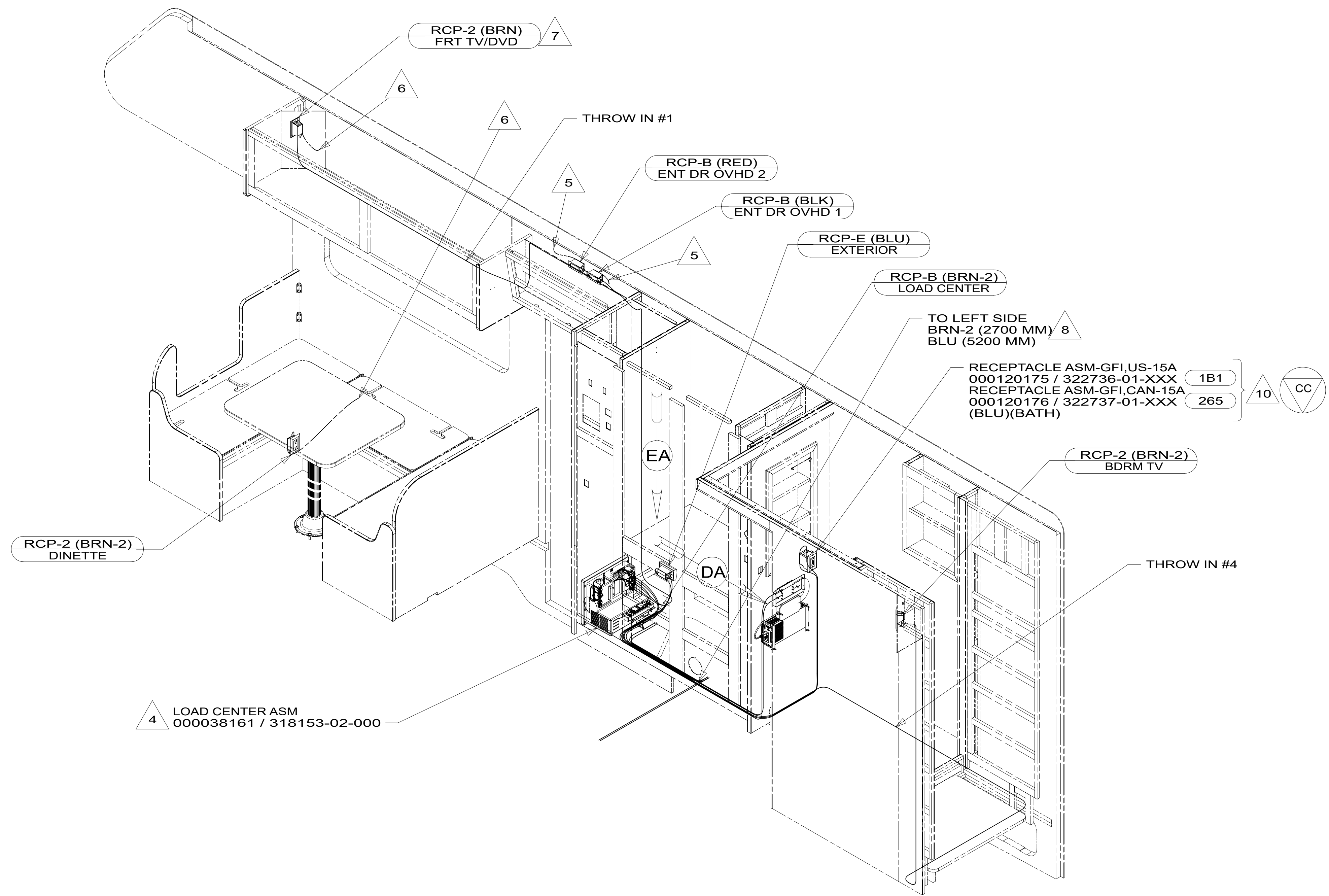
NOTES:

265 CODES/STANDARDS-CSA/CMVSS
 1B1 CODES/STANDARDS USA

FOR ELECTRICAL TORQUE SPECIFICATIONS SEE DWG NO. 128783-01-000

FOR ELECTRICAL CALLOUTS SEE DWG 000228177 344479-01-000

DESCRIPTION:	
WIRING INSTL-BODY,110V	
SHEET:	ITEM/PART NO.:
2 OF 7	000199289 / 33667701000
REV	



- 10 SEE COMPONENT DRAWING FOR TORQUE SPECIFICATIONS.
- 9 WIRE ROUTED IN SIDEWALL.
- 8 WIRE ROUTED IN CHANNEL IN FLOOR.
- 7 SEE WIRING INSTL-TV/DVD FOR ADDITIONAL INFORMATION.
- 6 PART OF WIRE ASM-CHASSIS.
- 5 WIRE ROUTED IN ROOF.
- 4 SEE LOAD CENTER ASM FOR ADDITIONAL INFORMATION.

- 3. ALL GROUND WIRES TO BE COVERED WITH TUBING 8041-02-000.
- 2. ALL WIRING TO BE SECURED WITHIN 200MM OF OUTLET BOXES.
- 1. AT MINIMUM ALL WIRES TO BE SUPPORTED AND SECURED PER CODE REQUIREMENTS. USE CLAMP 10495 OR 10497 OR WIRE TIE 8343 OR 108046 AND SCREW G67-XX-XXX OR G56-XX-XXX AS APPROPRIATE FOR INSTALLATION.

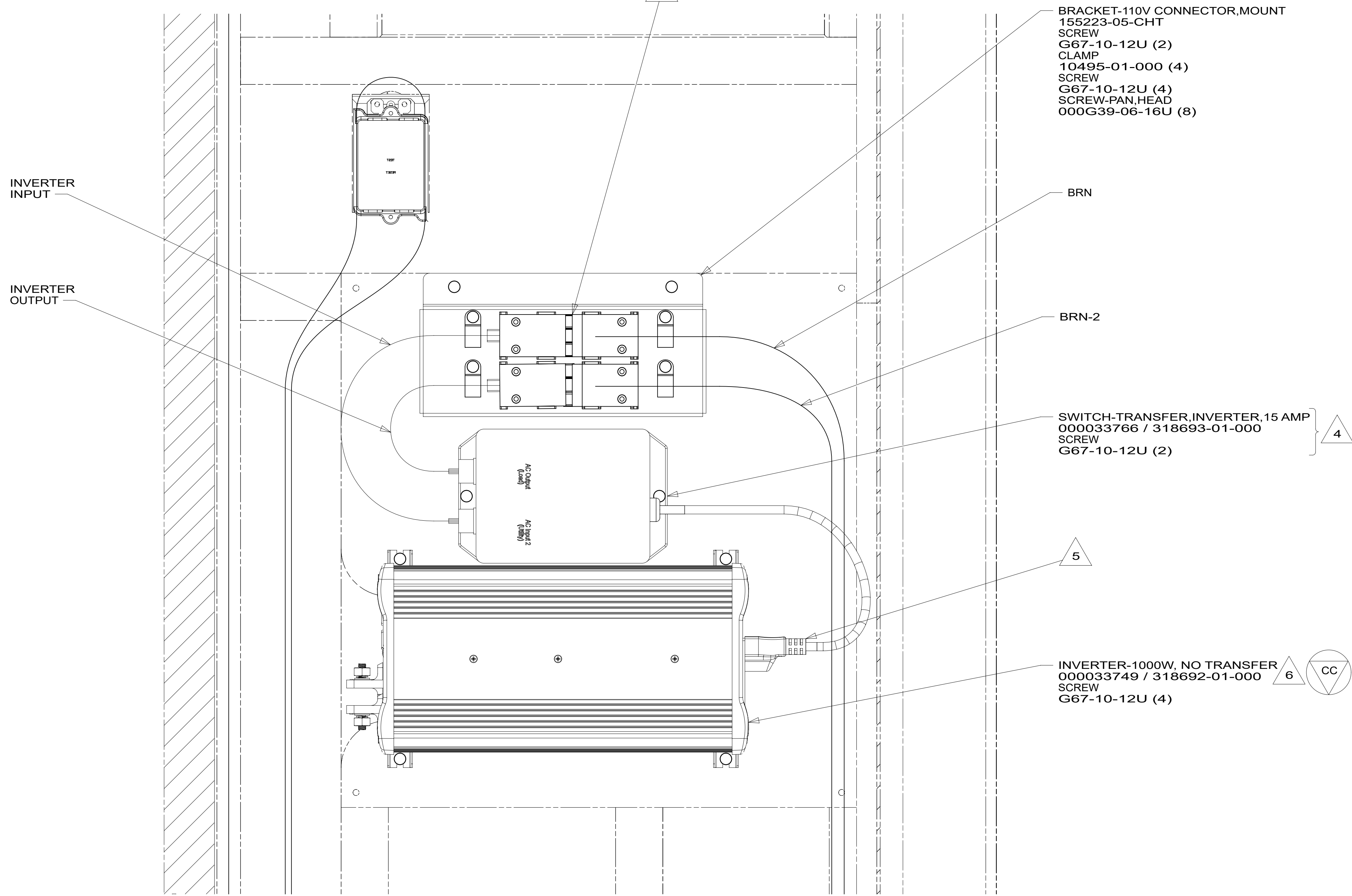
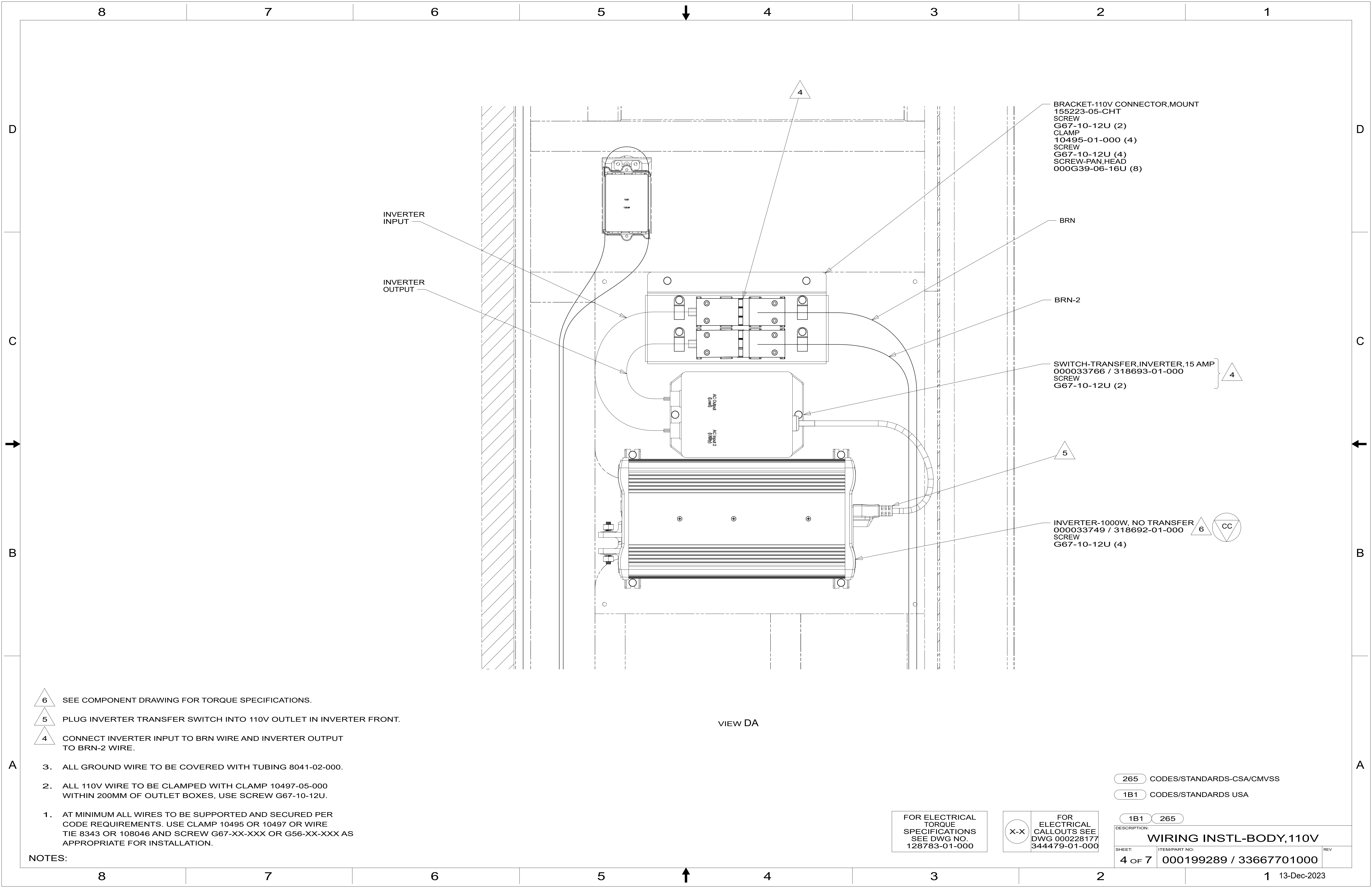
NOTES:

265 CODES/STANDARDS-CSA/CMVSS
1B1 CODES/STANDARDS USA

FOR ELECTRICAL TORQUE SPECIFICATIONS SEE DWG NO. 128783-01-000

FOR ELECTRICAL CALLOUTS SEE DWG 000228177 344479-01-000

DESCRIPTION:	1B1 265	
WIRING INSTL-BODY,110V		
SHEET:	ITEM/PART NO.:	REV
3 OF 7	000199289 / 33667701000	



VIEW DA

- 6 SEE COMPONENT DRAWING FOR TORQUE SPECIFICATIONS.
- 5 PLUG INVERTER TRANSFER SWITCH INTO 110V OUTLET IN INVERTER FRONT.
- 4 CONNECT INVERTER INPUT TO BRN WIRE AND INVERTER OUTPUT TO BRN-2 WIRE.
- 3. ALL GROUND WIRE TO BE COVERED WITH TUBING 8041-02-000.
- 2. ALL 110V WIRE TO BE CLAMPED WITH CLAMP 10497-05-000 WITHIN 200MM OF OUTLET BOXES, USE SCREW G67-10-12U.
- 1. AT MINIMUM ALL WIRES TO BE SUPPORTED AND SECURED PER CODE REQUIREMENTS. USE CLAMP 10495 OR 10497 OR WIRE TIE 8343 OR 108046 AND SCREW G67-XX-XXX OR G56-XX-XXX AS APPROPRIATE FOR INSTALLATION.

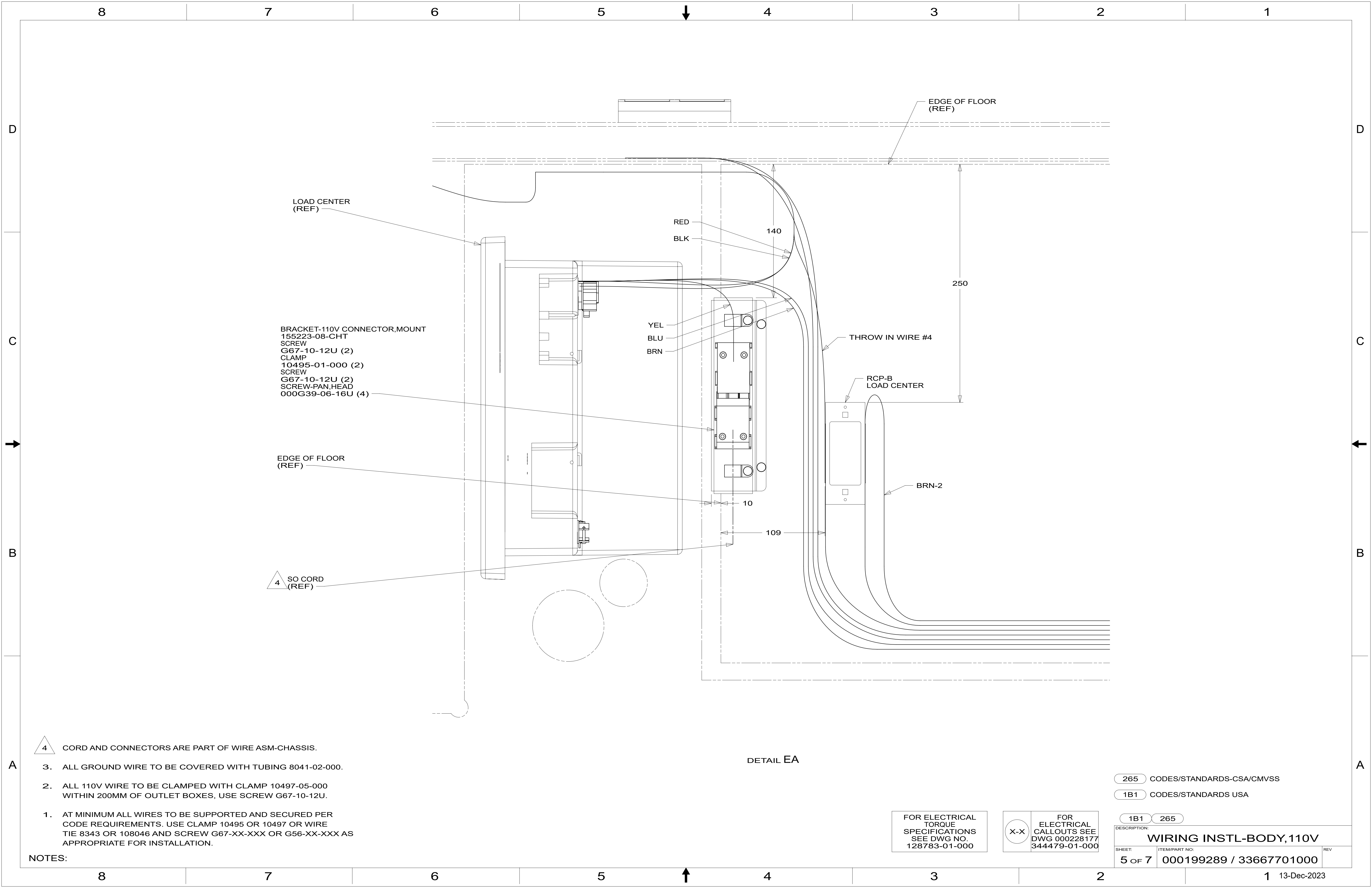
NOTES:

FOR ELECTRICAL TORQUE SPECIFICATIONS SEE DWG NO. 128783-01-000

FOR ELECTRICAL CALLOUTS SEE DWG 000228177 344479-01-000

- 265 CODES/STANDARDS-CSA/CMVSS
- 1B1 CODES/STANDARDS USA

DESCRIPTION:	
WIRING INSTL-BODY, 110V	
SHEET:	ITEM/PART NO.:
4 OF 7	000199289 / 33667701000
REV	



LOAD CENTER
(REF)

EDGE OF FLOOR
(REF)

RED
BLK

140

250

BRACKET-110V CONNECTOR, MOUNT
155223-08-CHT
SCREW
G67-10-12U (2)
CLAMP
10495-01-000 (2)
SCREW
G67-10-12U (2)
SCREW-PAN HEAD
000G39-06-16U (4)

YEL
BLU
BRN

THROW IN WIRE #4

RCP-B
LOAD CENTER

EDGE OF FLOOR
(REF)

BRN-2

10

109

4 SO CORD
(REF)

4 CORD AND CONNECTORS ARE PART OF WIRE ASM-CHASSIS.

3. ALL GROUND WIRE TO BE COVERED WITH TUBING 8041-02-000.

2. ALL 110V WIRE TO BE CLAMPED WITH CLAMP 10497-05-000 WITHIN 200MM OF OUTLET BOXES, USE SCREW G67-10-12U.

1. AT MINIMUM ALL WIRES TO BE SUPPORTED AND SECURED PER CODE REQUIREMENTS. USE CLAMP 10495 OR 10497 OR WIRE TIE 8343 OR 108046 AND SCREW G67-XX-XXX OR G56-XX-XXX AS APPROPRIATE FOR INSTALLATION.

NOTES:

DETAIL EA

265 CODES/STANDARDS-CSA/CMVSS

1B1 CODES/STANDARDS USA

1B1 265

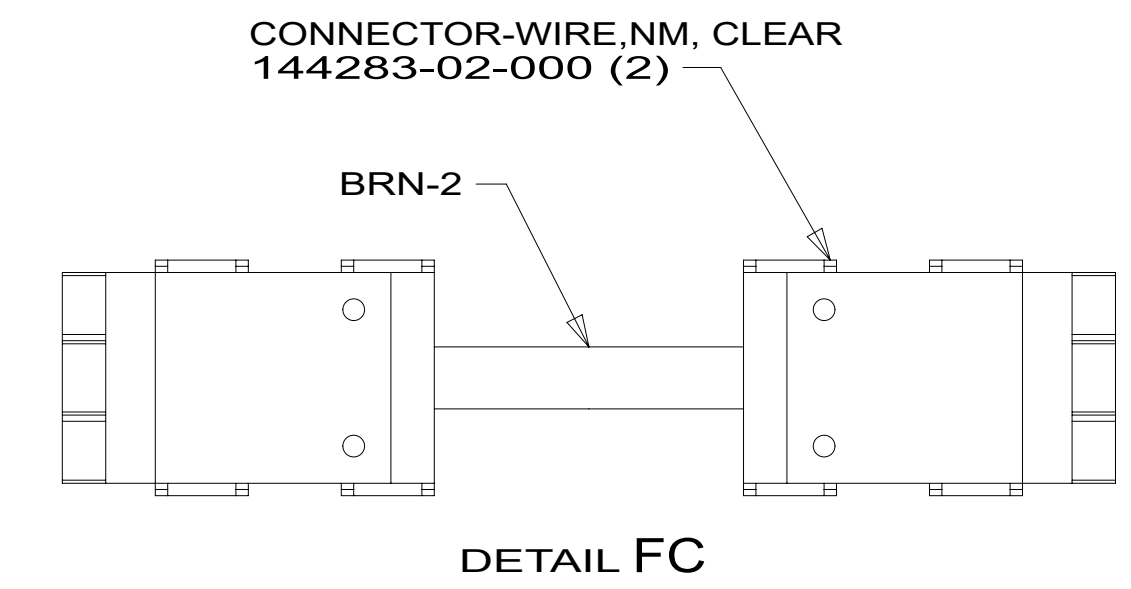
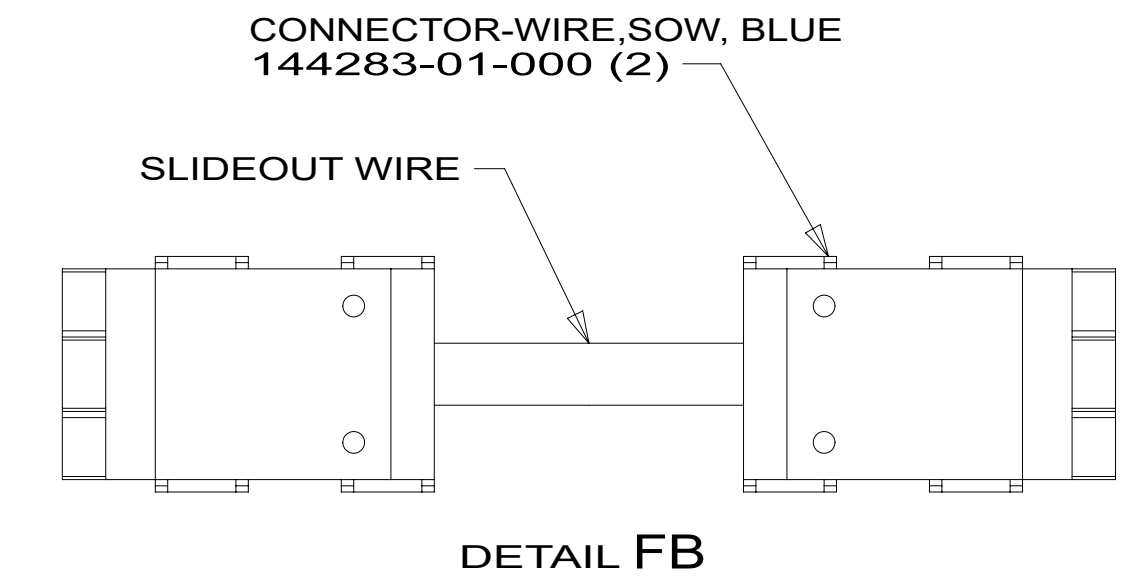
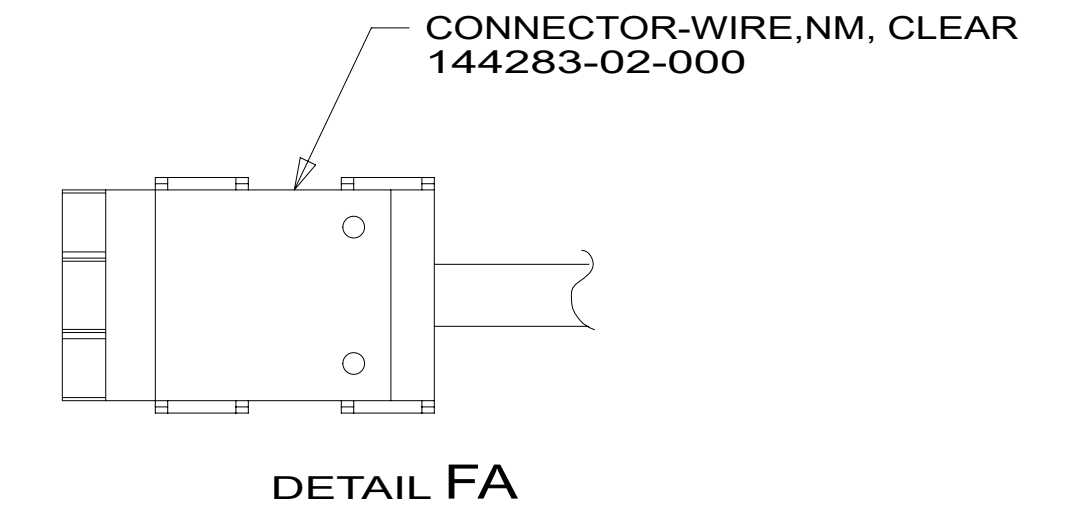
FOR ELECTRICAL
TORQUE
SPECIFICATIONS
SEE DWG NO.
128783-01-000

FOR ELECTRICAL
CALLOUTS SEE
DWG 000228177
344479-01-000

DESCRIPTION:
WIRING INSTL-BODY, 110V

SHEET: 5 OF 7 ITEM/PART NO: 000199289 / 33667701000 REV

BRN	1B1	136131-03-032	△4
	265	136134-03-032	△4
BRN-2	1B1	136131-19-062	△7
	265	136134-19-062	△7
THROW IN WIRE #1	1B1	136131-19-060	
	265	136134-19-060	
THROW IN WIRE #4	1B1	136131-19-066	
	265	136134-19-066	
SLIDEOUT WIRE #1		136151-19-021	△6
THROW IN WIRE #2	1B1	136131-19-029	△4
	265	136134-19-029	△4
BLU	1B1	136131-02-136	
	265	136134-02-136	
RED	1B1	136135-07-034	
	265	136136-07-034	
BLK	1B1	136135-06-033	
	265	136136-06-033	
YEL	1B1	136131-05-011	△4
	265	136134-05-011	△4
THROW IN WIRE #3	1B1	136131-05-018	△4
	265	136134-05-018	△4
MAIN CABLE ASM	1B1	164957-13-042	△5
	265	164957-14-042	△5
GROUND MAIN		136145-02-020	



- △7 SEE DETAIL FC FOR CONNECTOR INSTALLATION.
- △6 SEE DETAIL FB FOR CONNECTOR INSTALLATION.
- △5 WIRE PREP TO INSTALL ON POWER CORD BOX ASM. LOAD CENTER END WILL BE INSTALLED ON LINE.
- △4 SEE DETAIL FA FOR CONNECTOR INSTALLATION.

3. SEE WIRING INSTL-BODY, 12V FOR ADDITIONAL INFORMATION.
2. SECURE WIRES TO BACKSIDE OF LOAD CENTER WITH WIRE TIE 116673-01-000.
1. ALL GROUND WIRES TO BE COVERED WITH TUBING 8041-02-000.

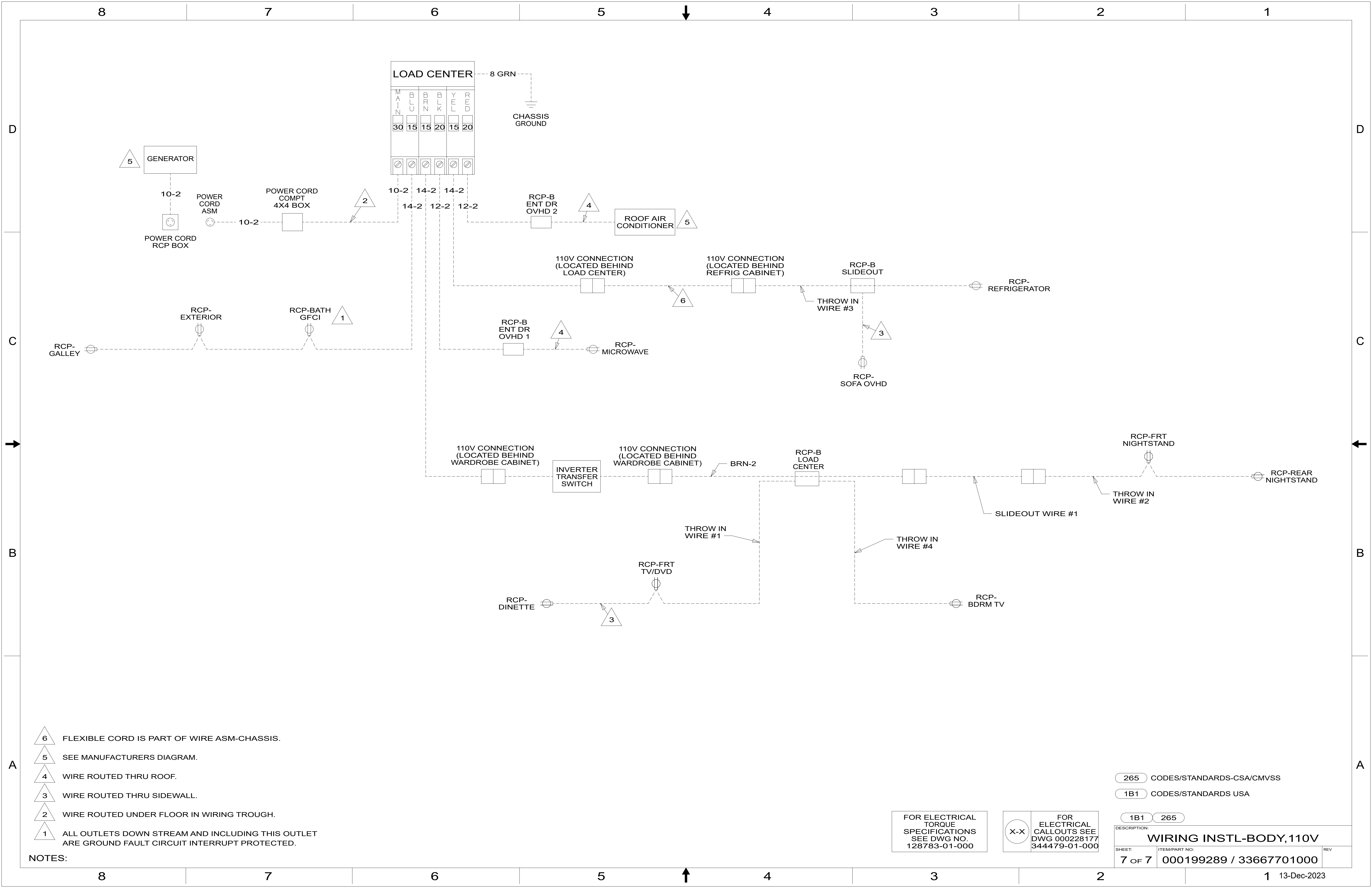
NOTES:

- 265 CODES/STANDARDS-CSA/CMVSS
- 1B1 CODES/STANDARDS USA

FOR ELECTRICAL TORQUE SPECIFICATIONS SEE DWG NO. 128783-01-000

FOR ELECTRICAL CALLOUTS SEE DWG 000228177 344479-01-000

DESCRIPTION:	1B1 265	
WIRING INSTL-BODY, 110V		
SHEET:	ITEM/PART NO.:	REV
6 OF 7	000199289 / 33667701000	



- NOTES:
- 6 FLEXIBLE CORD IS PART OF WIRE ASM-CHASSIS.
 - 5 SEE MANUFACTURERS DIAGRAM.
 - 4 WIRE ROUTED THRU ROOF.
 - 3 WIRE ROUTED THRU SIDEWALL.
 - 2 WIRE ROUTED UNDER FLOOR IN WIRING TROUGH.
 - 1 ALL OUTLETS DOWN STREAM AND INCLUDING THIS OUTLET ARE GROUND FAULT CIRCUIT INTERRUPT PROTECTED.

FOR ELECTRICAL TORQUE SPECIFICATIONS SEE DWG NO. 128783-01-000

FOR ELECTRICAL CALLOUTS SEE DWG 000228177 344479-01-000

265 CODES/STANDARDS-CSA/CMVSS
 1B1 CODES/STANDARDS USA

DESCRIPTION: WIRING INSTL-BODY, 110V	
SHEET: 7 OF 7	ITEM/PART NO.: 000199289 / 33667701000
REV 1 13-Dec-2023	