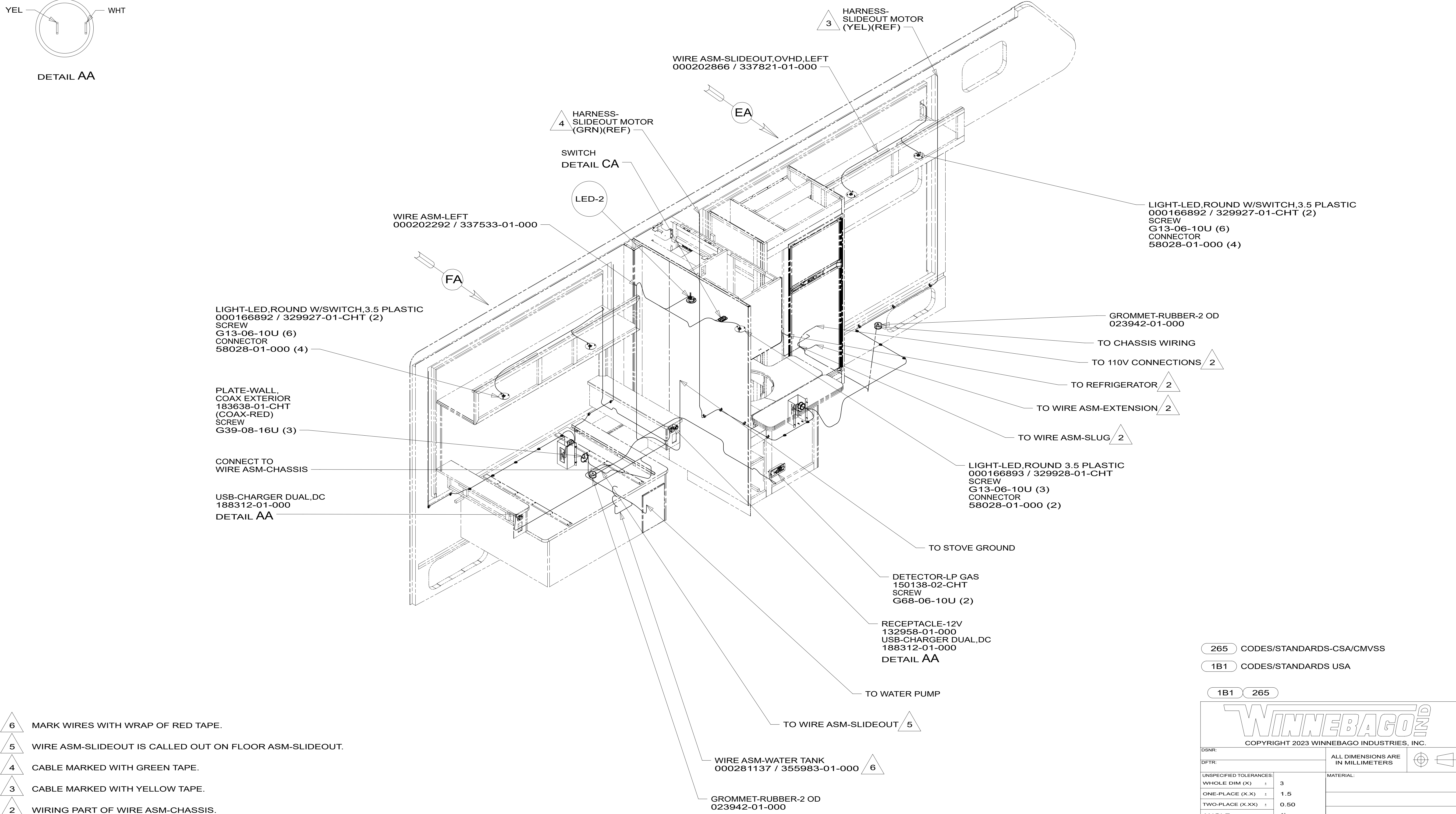


DETAIL AA



- 6 MARK WIRES WITH WRAP OF RED TAPE.
- 5 WIRE ASM-SLIDEOUT IS CALLED OUT ON FLOOR ASM-SLIDEOUT.
- 4 CABLE MARKED WITH GREEN TAPE.
- 3 CABLE MARKED WITH YELLOW TAPE.
- 2 WIRING PART OF WIRE ASM-CHASSIS.

1. AT MINIMUM ALL WIRES TO BE SUPPORTED AND SECURED PER CODE REQUIREMENTS. USE CLAMP 10495 OR 10497 OR WIRE TIE 8343 OR 108046 AND SCREW G67-XX-XXX OR G56-XX-XXX AS APPROPRIATE FOR INSTALLATION.

NOTES:

FOR ELECTRICAL TORQUE SPECIFICATIONS SEE DWG NO. 128783-01-000

FOR ELECTRICAL CALLOUTS SEE DWG 000228177 344479-01-000

- 265 CODES/STANDARDS-CSA/CMVSS
- 1B1 CODES/STANDARDS USA

- 1B1 265



DSNR:		ALL DIMENSIONS ARE IN MILLIMETERS	
DFFR:		MATERIAL:	
UNSPECIFIED TOLERANCES:			
WHOLE DIM (X)	: 3		
ONE-PLACE (X.X)	: 1.5		
TWO-PLACE (X.XX)	: 0.50		
ANGLE	: 1°		
REFER TO ES0018 FOR FASTENER TIGHTENING GUIDELINES		WEIGHT: (LBS)	FIRST USED:
			20 326T
DESCRIPTION:			
WIRING INSTL-BODY,12V			
SHEET:	ITEM/PART NO.:	REV:	
1 OF 6	000209184 / 33974301000		
REF:		1 02-May-2023	

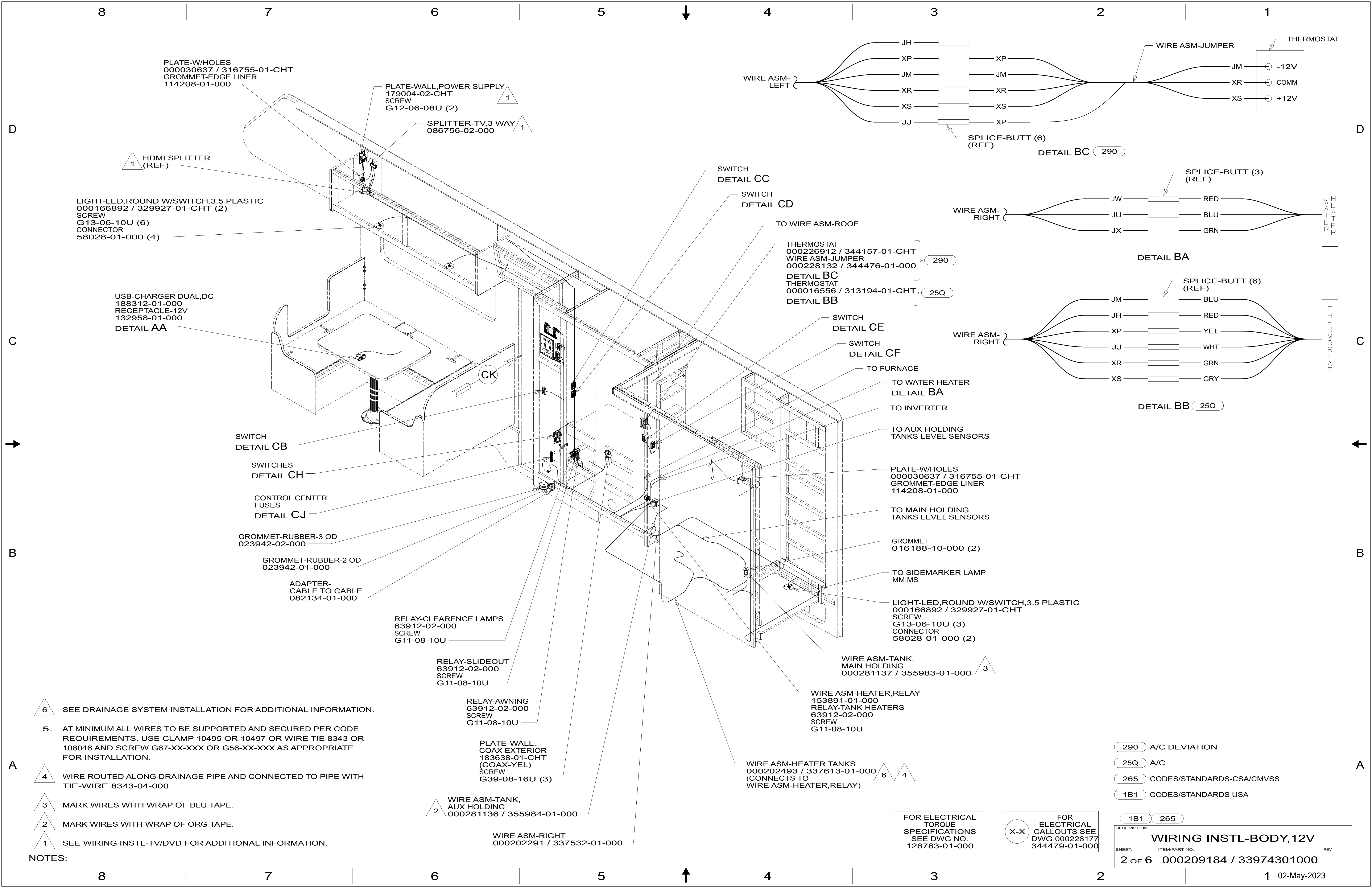


PLATE-W/HOLES
000030637 / 316755-01-CHT
GROMMET-EDGE LINER
114208-01-000

PLATE-WALL,POWER SUPPLY
179004-02-CHT
SCREW
G12-06-08U (2)

SPLITTER-TV,3 WAY
086756-02-000

HDMI SPLITTER
(REF)

LIGHT-LED,ROUND W/SWITCH,3.5 PLASTIC
000166892 / 329927-01-CHT (2)
SCREW
G13-06-10U (6)
CONNECTOR
58028-01-000 (4)

USB-CHARGER DUAL,DC
188312-01-000
RECEPTACLE-12V
132958-01-000
DETAIL AA

SWITCH
DETAIL CB

SWITCHES
DETAIL CH

CONTROL CENTER
FUSES
DETAIL CJ

GROMMET-RUBBER-3 OD
023942-02-000

GROMMET-RUBBER-2 OD
023942-01-000

ADAPTER-
CABLE TO CABLE
082134-01-000

RELAY-CLEARANCE LAMPS
63912-02-000
SCREW
G11-08-10U

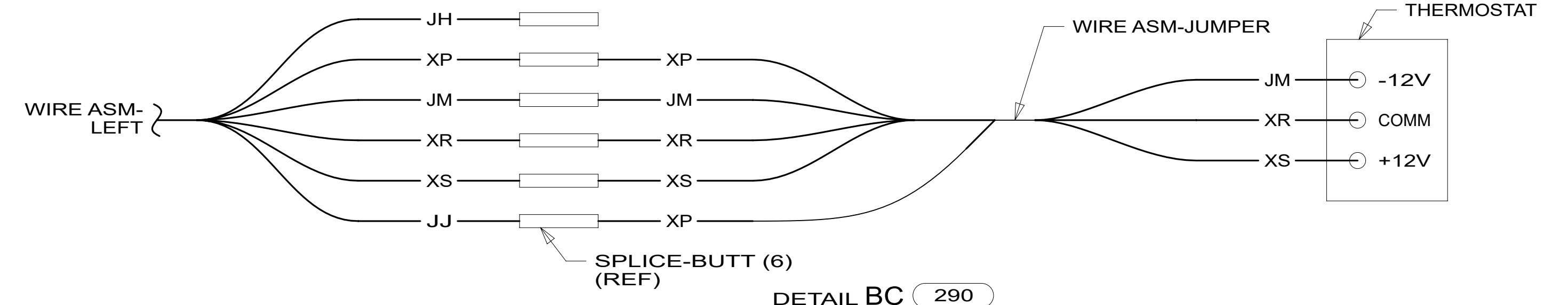
RELAY-SLIDEOUT
63912-02-000
SCREW
G11-08-10U

RELAY-AWNING
63912-02-000
SCREW
G11-08-10U

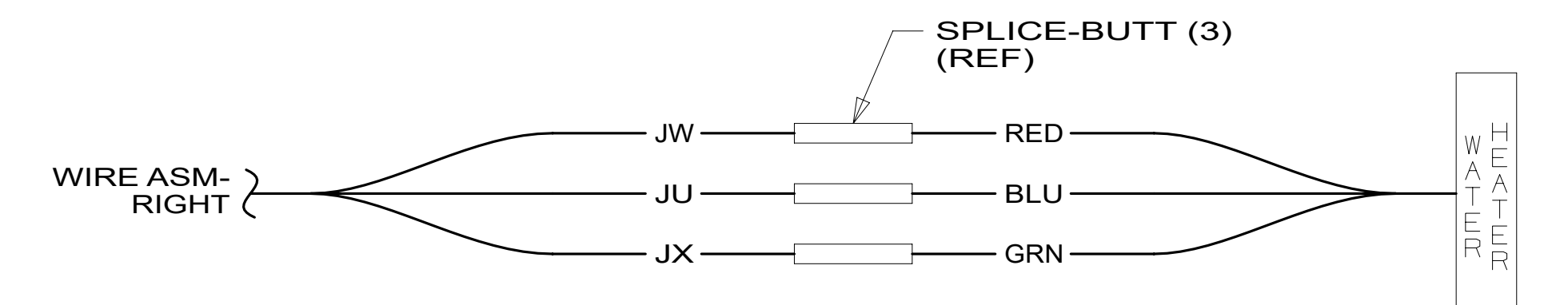
PLATE-WALL,
COAX EXTERIOR
183638-01-CHT
(COAX-YEL)
SCREW
G39-08-16U (3)

WIRE ASM-TANK,
AUX HOLDING
000281136 / 355984-01-000

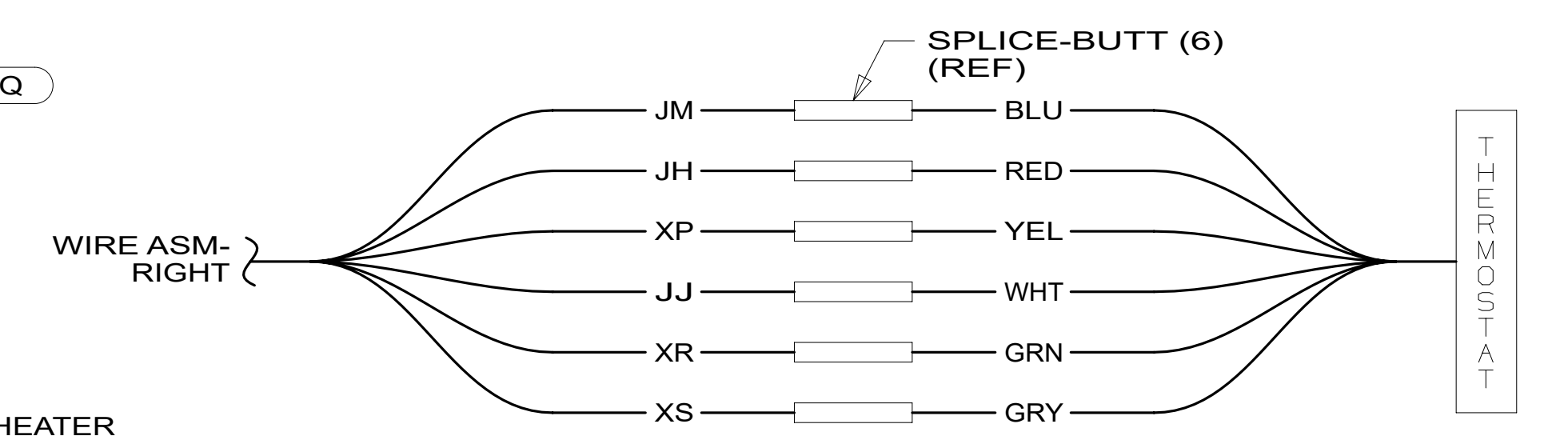
WIRE ASM-RIGHT
000202291 / 337532-01-000



DETAIL BC 290



DETAIL BA



DETAIL BB 25Q

SWITCH
DETAIL CC

SWITCH
DETAIL CD

TO WIRE ASM-ROOF

THERMOSTAT
000226912 / 344157-01-CHT
WIRE ASM-JUMPER
000228132 / 344476-01-000
DETAIL BC 290
THERMOSTAT
000016556 / 313194-01-CHT
DETAIL BB 25Q

SWITCH
DETAIL CE

SWITCH
DETAIL CF

TO FURNACE

TO WATER HEATER
DETAIL BA

TO INVERTER

TO AUX HOLDING
TANKS LEVEL SENSORS

PLATE-W/HOLES
000030637 / 316755-01-CHT
GROMMET-EDGE LINER
114208-01-000

TO MAIN HOLDING
TANKS LEVEL SENSORS

GROMMET
016188-10-000 (2)

TO SIDEMARKER LAMP
MM,MS

LIGHT-LED,ROUND W/SWITCH,3.5 PLASTIC
000166892 / 329927-01-CHT
SCREW
G13-06-10U (3)
CONNECTOR
58028-01-000 (2)

WIRE ASM-TANK,
MAIN HOLDING
000281137 / 355983-01-000

WIRE ASM-HEATER,RELAY
153891-01-000
RELAY-TANK HEATERS
63912-02-000
SCREW
G11-08-10U

WIRE ASM-HEATER,TANKS
000202493 / 337613-01-000
(CONNECTS TO
WIRE ASM-HEATER,RELAY)

6 SEE DRAINAGE SYSTEM INSTALLATION FOR ADDITIONAL INFORMATION.

5. AT MINIMUM ALL WIRES TO BE SUPPORTED AND SECURED PER CODE REQUIREMENTS. USE CLAMP 10495 OR 10497 OR WIRE TIE 8343 OR 108046 AND SCREW G67-XX-XXX OR G56-XX-XXX AS APPROPRIATE FOR INSTALLATION.

4 WIRE ROUTED ALONG DRAINAGE PIPE AND CONNECTED TO PIPE WITH TIE-WIRE 8343-04-000.

3 MARK WIRES WITH WRAP OF BLU TAPE.

2 MARK WIRES WITH WRAP OF ORG TAPE.

1 SEE WIRING INSTL-TV/DVD FOR ADDITIONAL INFORMATION.

NOTES:

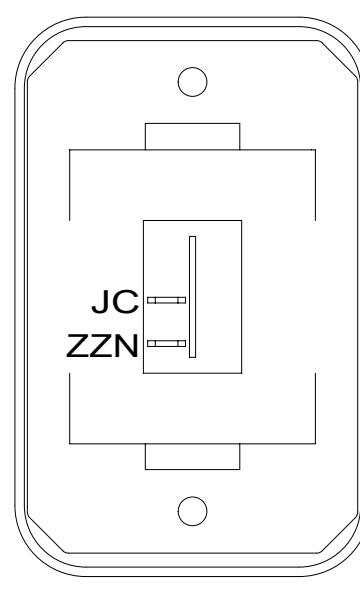
- 290 A/C DEVIATION
- 25Q A/C
- 265 CODES/STANDARDS-CSA/CMVSS
- 1B1 CODES/STANDARDS USA

FOR ELECTRICAL
TORQUE
SPECIFICATIONS
SEE DWG NO.
128783-01-000

FOR
ELECTRICAL
CALLOUTS SEE
DWG 000228177
344479-01-000

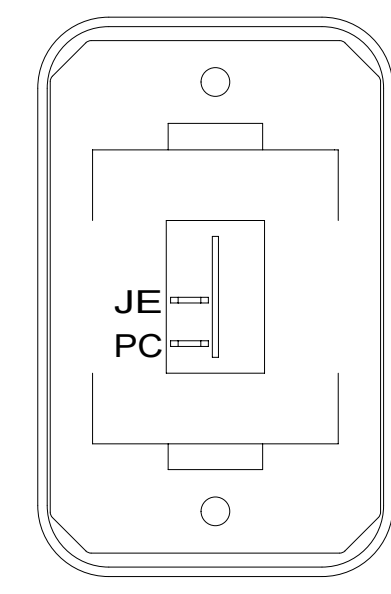
DESCRIPTION: WIRING INSTL-BODY,12V	
SHEET: 2 OF 6	ITEM/PART NO: 000209184 / 33974301000
REV 02-May-2023	

D



SWITCH-ROCKER
135740-01-CHT
SWITCH-BASE
135741-01-CHT
SWITCH-BEZEL
135742-01-CHT
SCREW
000G11-08-08U (2)

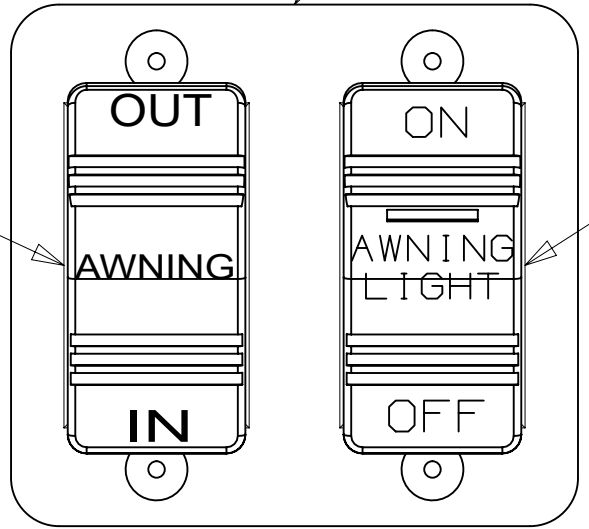
DETAIL CA



SWITCH-ROCKER
135740-01-CHT
SWITCH-BASE
135741-01-CHT
SWITCH-BEZEL
135742-01-CHT
SCREW
000G11-08-08U (2)

DETAIL CE

SWITCH-ROCKER
108357-06-000
ACTUATOR-SWITCH
108356-12-CHT

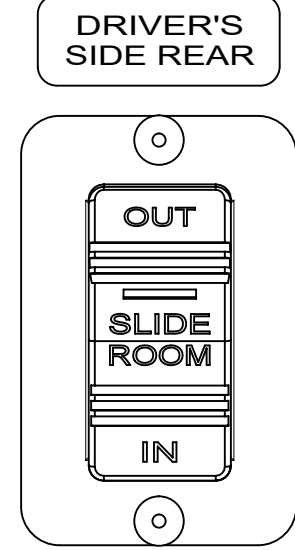
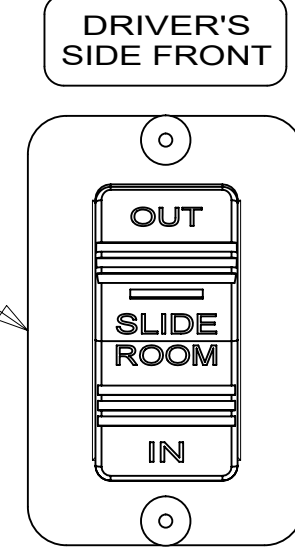


DETAIL CH

PLATE-SWITCH
158431-19-CHT
SCREW
000G11-08-08U (4)

SWITCH-ROCKER
108357-14-000
ACTUATOR-SWITCH
108356-28-CHT

SWITCH-ROCKER
108357-18-000
ACTUATOR-SWITCH,
SLIDE ROOM
108356-31-CHT
PLATE-SWITCH
144363-02-CHT
SCREW
000G11-08-08U (2)



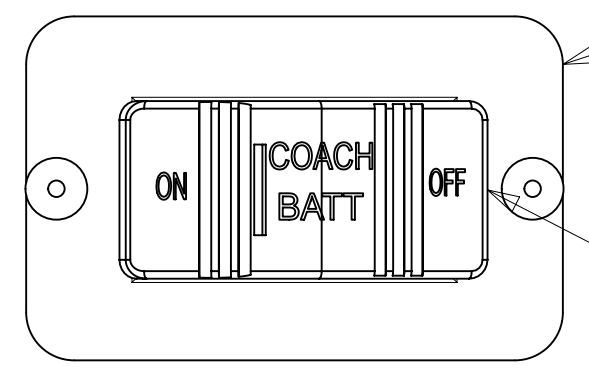
SWITCH-ROCKER
108357-18-000
ACTUATOR-SWITCH,
SLIDE ROOM
108356-31-CHT
PLATE-SWITCH
144363-02-CHT
SCREW
000G11-08-08U (2)

WARNING CRUSH HAZARD. Keep people and objects clear of the inside and the outside of the slideout room when operating. Failure to comply could result in death or serious injury.

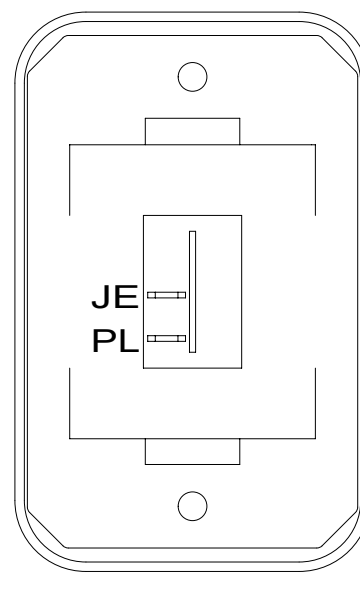
LABEL-WARNING,SLIDEOUT
116549-01-000

PLATE
144363-02-CHT
SCREW
000G11-08-08U (2)

SWITCH-BATTERY
108357-18-000
ACTUATOR
108356-19-CHT
CIRCUITS LH,LJ,
LG,JP,JA
WIRE ASM-THERMISTOR
186796-01-000

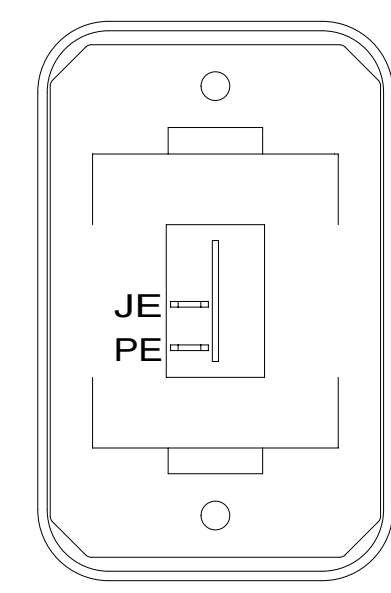


C



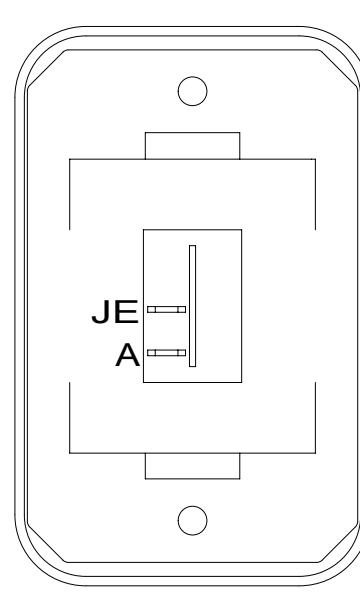
SWITCH-ROCKER
135740-01-CHT
SWITCH-BASE
135741-01-CHT
SWITCH-BEZEL
135742-01-CHT
SCREW
000G11-08-08U (2)

DETAIL CB



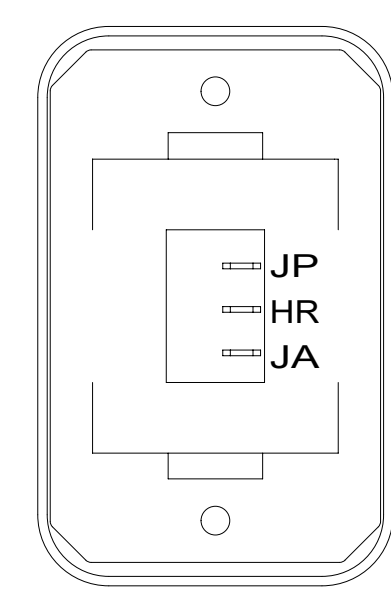
SWITCH-ROCKER
135740-01-CHT
SWITCH-BASE
135741-01-CHT
SWITCH-BEZEL
135742-01-CHT
SCREW
000G11-08-08U (2)

DETAIL CF



SWITCH-ROCKER
135740-01-CHT
SWITCH-BASE
135741-01-CHT
SWITCH-BEZEL
135742-01-CHT
SCREW
000G11-08-08U (2)

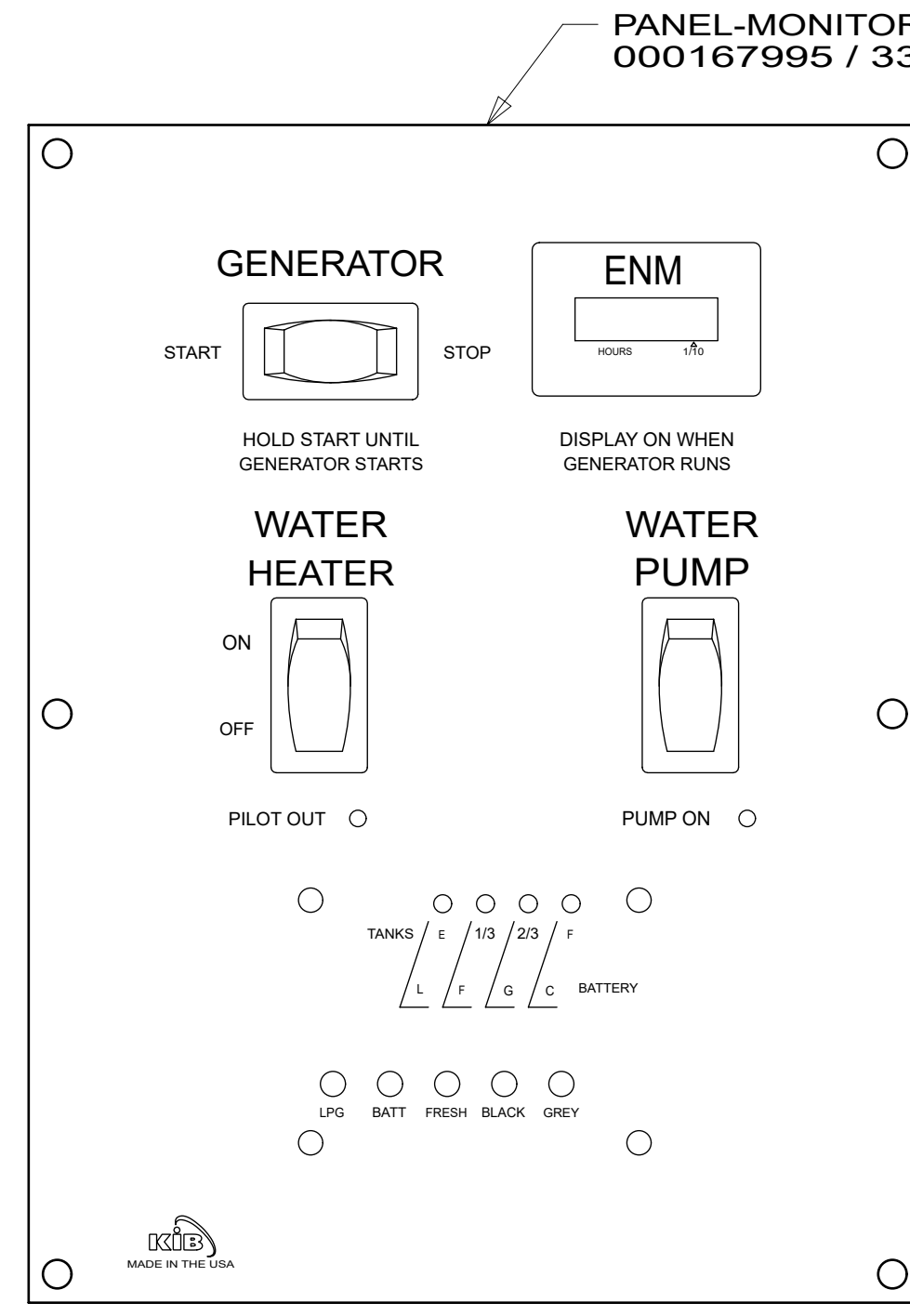
DETAIL CC



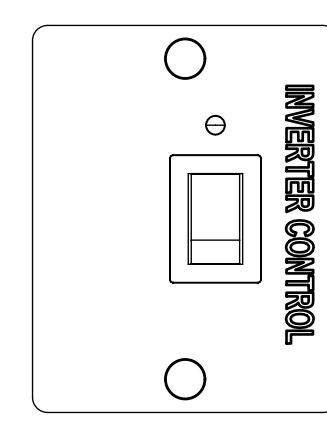
SWITCH-ROCKER
135740-06-CHT
SWITCH-BASE
135741-01-CHT
SWITCH-BEZEL
135742-01-CHT
SCREW
000G11-08-08U (2)
LABEL-SWITCH,
HTR,HOLDING TK
134563-01-CHT

DETAIL CG

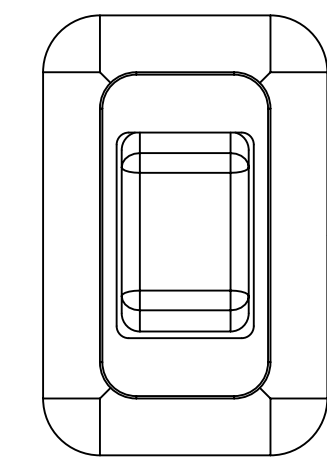
HOLDING TANK HEATER
TURN OFF When Not In Use
SEE OPERATORS MANUAL



DETAIL CK



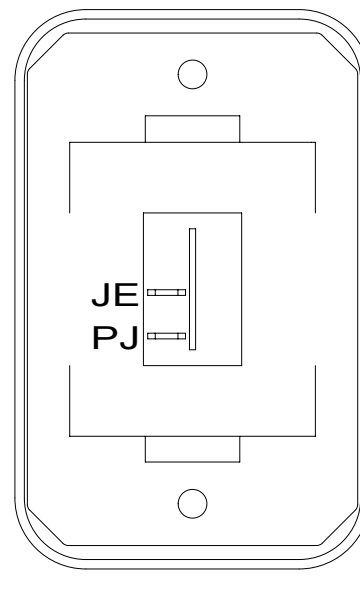
REMOTE PANEL-INVERTER
000037772 / 318694-01-CHT
(SUPPLIED W/ INVERTER)
SCREW
000G11-06-08U (2)



SWITCH
DETAIL CG

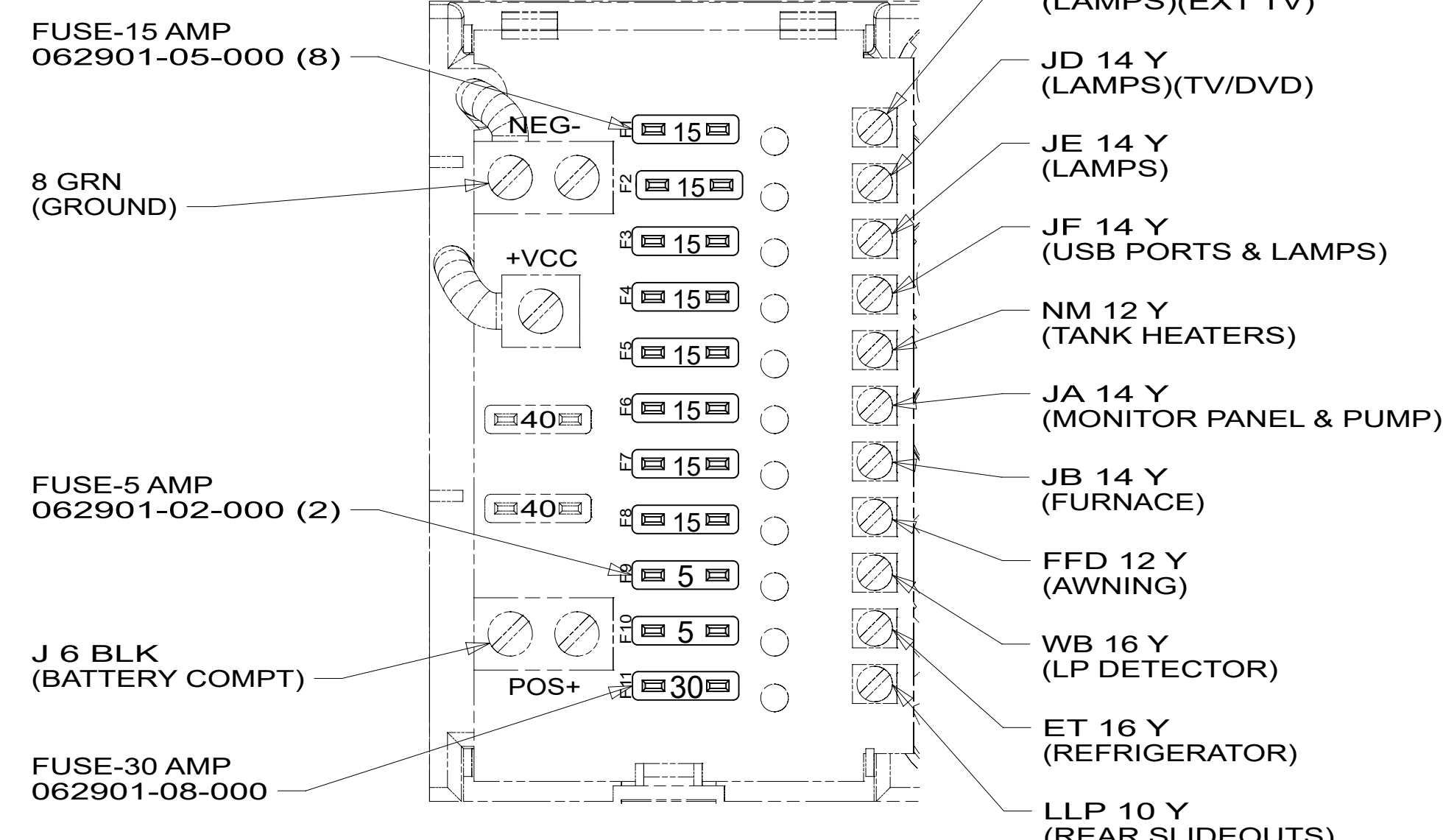
HOLDING TANK HEATER
TURN OFF When Not In Use
SEE OPERATORS MANUAL

B



SWITCH-ROCKER
135740-01-CHT
SWITCH-BASE
135741-01-CHT
SWITCH-BEZEL
135742-01-CHT
SCREW
000G11-08-08U (2)

DETAIL CD



DETAIL CJ

- JC 14 Y (LAMPS)(EXT TV)
- JD 14 Y (LAMPS)(TV/DVD)
- JE 14 Y (LAMPS)
- JF 14 Y (USB PORTS & LAMPS)
- NM 12 Y (TANK HEATERS)
- JA 14 Y (MONITOR PANEL & PUMP)
- JB 14 Y (FURNACE)
- FFD 12 Y (AWNING)
- WB 16 Y (LP DETECTOR)
- ET 16 Y (REFRIGERATOR)
- LLP 10 Y (REAR SLIDEOUTS)

- FUSE-15 AMP 062901-05-000 (8)
- 8 GRN (GROUND)
- +VCC
- FUSE-5 AMP 062901-02-000 (2)
- J 6 BLK (BATTERY COMPT)
- FUSE-30 AMP 062901-08-000

FOR ELECTRICAL TORQUE SPECIFICATIONS SEE DWG NO. 128783-01-000

FOR ELECTRICAL CALLOUTS SEE DWG 000228177 344479-01-000

- 265 CODES/STANDARDS-CSA/CMVSS
- 1B1 CODES/STANDARDS USA

DESCRIPTION: WIRING INSTL-BODY,12V	
SHEET: 3 OF 6	ITEM/PART NO: 000209184 / 33974301000
REV	

A

8

7

6

5

4

3

2

1



LIGHT-LED,ROUND W/SWITCH,3.5 PLASTIC
 000166892 / 329927-01-CHT
 SCREW
 G13-06-16U (3)
 CONNECTOR
 58028-01-000 (2)

LIGHT-LED,ROUND 4.5 PLASTIC
 000166889 / 329926-01-CHT (12)
 SCREW
 G13-06-16U (36)
 CONNECTOR
 58028-01-000 (24)

ANTENNA-TV, OMNIDIRECTIONAL
 000171487 / 331386-01-CHT
 SCREW
 G67-10-16U (4)

1

1 SEE ANTENNA INSTALLATION MANUAL FOR
 CORRECT INSTALLATION PROCEDURE.

NOTES:

FOR ELECTRICAL
 TORQUE
 SPECIFICATIONS
 SEE DWG NO.
 128783-01-000

FOR
 ELECTRICAL
 CALLOUTS SEE
 DWG 000228177
 344479-01-000

265 CODES/STANDARDS-CSA/CMVSS
 1B1 CODES/STANDARDS USA

1B1 265

DESCRIPTION:
WIRING INSTL-BODY,12V

SHEET: 4 OF 6 ITEM/PART NO: 000209184 / 33974301000 REV

8

7

6

5

4

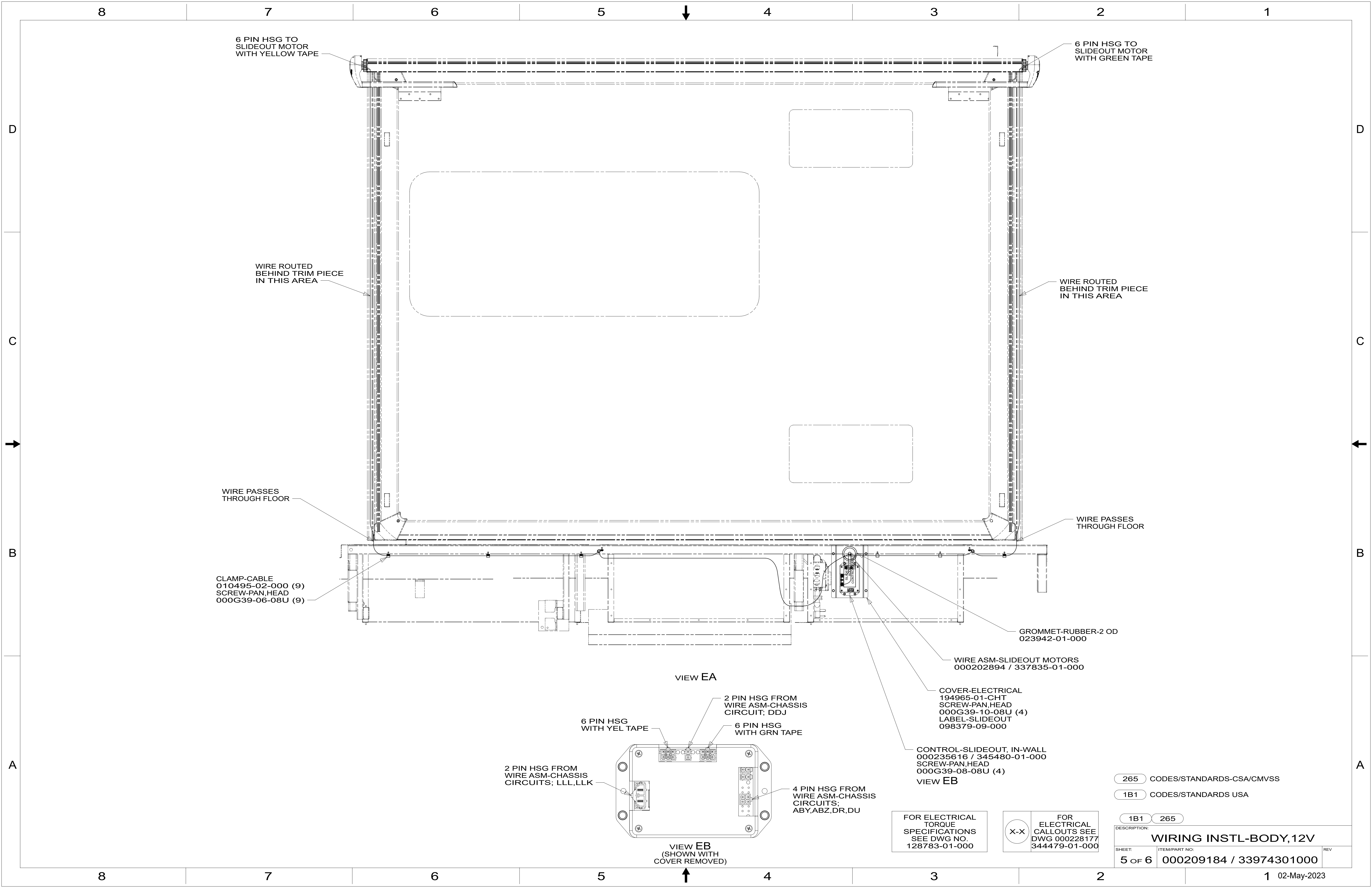
3

2

1



1 02-May-2023



6 PIN HSG TO SLIDEOUT MOTOR WITH YELLOW TAPE

6 PIN HSG TO SLIDEOUT MOTOR WITH GREEN TAPE

WIRE ROUTED BEHIND TRIM PIECE IN THIS AREA

WIRE ROUTED BEHIND TRIM PIECE IN THIS AREA

WIRE PASSES THROUGH FLOOR

WIRE PASSES THROUGH FLOOR

CLAMP-CABLE 010495-02-000 (9)
SCREW-PAN,HEAD 000G39-06-08U (9)

GROMMET-RUBBER-2 OD 023942-01-000

WIRE ASM-SLIDEOUT MOTORS 000202894 / 337835-01-000

VIEW EA

2 PIN HSG FROM WIRE ASM-CHASSIS CIRCUIT; DDJ

6 PIN HSG WITH YEL TAPE

6 PIN HSG WITH GRN TAPE

2 PIN HSG FROM WIRE ASM-CHASSIS CIRCUITS; LLL,LLK

4 PIN HSG FROM WIRE ASM-CHASSIS CIRCUITS; ABY,ABZ,DR,DU

COVER-ELECTRICAL 194965-01-CHT SCREW-PAN,HEAD 000G39-10-08U (4) LABEL-SLIDEOUT 098379-09-000

CONTROL-SLIDEOUT, IN-WALL 000235616 / 345480-01-000 SCREW-PAN,HEAD 000G39-08-08U (4)

VIEW EB

VIEW EB (SHOWN WITH COVER REMOVED)

FOR ELECTRICAL TORQUE SPECIFICATIONS SEE DWG NO. 128783-01-000

FOR ELECTRICAL CALLOUTS SEE DWG 000228177 344479-01-000

265 CODES/STANDARDS-CSA/CMVSS

1B1 CODES/STANDARDS USA

1B1 265

DESCRIPTION: WIRING INSTL-BODY,12V

SHEET: 5 OF 6 ITEM/PART NO: 000209184 / 33974301000 REV

1 02-May-2023

8

7

6

5

4

3

2

1

6 PIN HSG TO SLIDEOUT MOTOR WITH BLUE TAPE

6 PIN HSG TO SLIDEOUT MOTOR WITH PURPLE TAPE

WIRE ROUTED BEHIND TRIM PIECE IN THIS AREA

WIRE ROUTED BEHIND TRIM PIECE IN THIS AREA

CLAMP-CABLE
010495-02-000 (12)
SCREW-PAN,HEAD
000G39-06-08U (12)

WIRE ASM-SLIDEOUT MOTORS
000202892 / 337834-01-000

GROMMET-RUBBER-2 OD
023942-01-000

COVER-ELECTRICAL
194965-01-CHT
SCREW-10-16X1/2 PPH
000G11-10-08U (4)
LABEL-SLIDEOUT
098379-09-000

CONTROL-SLIDEOUT, IN-WALL
000235616 / 345480-01-000
SCREW-10-16X1/2 PPH
000G11-08-08U (4)
VIEW FB

VIEW FA

2 PIN HSG FROM WIRE ASM-CHASSIS CIRCUITS; LLR,LLP

6 PIN HSG WITH BLUE TAPE

2 PIN HSG FROM WIRE ASM-CHASSIS CIRCUIT; DDJ

6 PIN HSG WITH PURPLE TAPE

4 PIN HSG FROM WIRE ASM-CHASSIS CIRCUITS; ABW,ABX,BBM,BBN

VIEW FB
(SHOWN WITH COVER REMOVED)

FOR ELECTRICAL TORQUE SPECIFICATIONS SEE DWG NO. 128783-01-000

FOR ELECTRICAL CALLOUTS SEE DWG 000228177 344479-01-000

265 CODES/STANDARDS-CSA/CMVSS

1B1 CODES/STANDARDS USA

1B1 265

DESCRIPTION:
WIRING INSTL-BODY,12V

SHEET: 6 OF 6 ITEM/PART NO.: 000209184 / 33974301000 REV