

2003 Winnebago Minnie®



**Minnie®**  
Don't let the name fool you.

### It's in the details.

Step into the Minnie and notice the richness of the full-size cabinet doors that feature a tough catalyzed finish typically found in elegant home cabinetry. The durable, no-wax Congoleum® flooring is a snap to clean. The day/night pleated shades control light, keep the interior cooler and provide privacy. Interior lighting is strategically positioned to provide a warm ambience. Switches for ceiling lights are mounted on the wall within easy reach.

Some of the most important features of a motor home are things you never see. Such as the ceiling-ducted air conditioning. It distributes cool, consistent comfort throughout the motor home and is controlled by a wall-mounted thermostat. The available roof air heat pump takes the chill out on cool mornings, without firing up the furnace.



29B-Sandstone

### More bang for your buck.

At Winnebago Industries, we feel you should get the most out of every dollar. Nothing embodies this philosophy more than the 2003 Minnie. The Minnie is built using the same proven construction methods as all our motor homes. Once you start comparing the construction and features to the competition, you'll be surprised at all the Minnie offers.

We strive to make each year's model better than the previous year's. It's one of the reasons why the Minnie is the best-selling Class C motor home in the industry. This year's Minnie has an advanced radius-style roof design, which maximizes headroom and provides improved insulation.

Every Minnie has a number of standard features, such as the plentiful and convenient storage areas, plus an impressive list of available amenities. With six floorplans to choose from, you're sure to find a Minnie that's perfect for you.



29B-Sandstone

### Big bedroom.

The 29B features a rear slideroom, creating an impressive bedroom area. Storage is plentiful with deep overhead cabinets; a large, mirror-doored wardrobe with drawers; and underbed storage as well. The vanity area includes a flip-up mirror and doubles as a handy place to write letters or tap on a laptop computer.



24F-Sagebrush

### Watch what you want, when you want.

You'll like what you see when you equip your Minnie with the available 25" TV with remote and video selection system. Minnie is also digital satellite system ready. You can choose this feature now, or add it later. The available inverter provides 110-volt power when shoreline or generator power is not available.

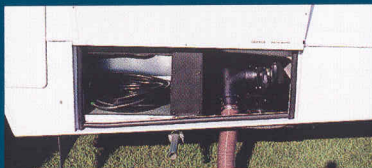


### You're the cook.

You'll prepare delicious meals with ease in the galley. A three-burner Magic Chef® range/oven combines with a built-in microwave and lots of storage. The large cabinet pulls make the doors and drawers easy to open. The 31C also features a pull-out cutting board. A sink cover provides additional work space. Also available on the 31C is a 19" TV and VCR in the galley for comfortable viewing from the dinette or couch.

### A bath with room.

The Minnie features a convenient residential-height toilet with foot-pedal flush. The split bath design on the 29B and 31C offers a private shower with a folding door and a skylight is standard on most models.



### An easy reach.

The service center is located for easy access. For added convenience in all 2003 models, the compartment is enclosed to protect hookups from road dirt and grime.



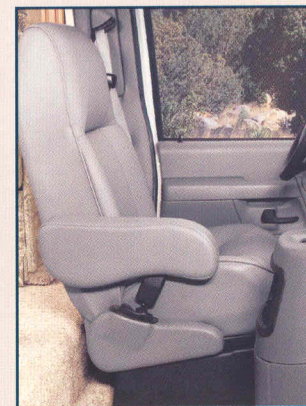
### This radio's a "wow."

Our engineers worked closely with the manufacturer to create the RV Radio designed specifically for RV use. It includes an AM/FM stereo cassette/CD player with a built-in weather band for immediate weather updates at the touch of a button. Its large control knobs and buttons are easy to operate. (Standard on Ford® chassis models only.)



### Smart dash.

Minnie's cab features conveniently positioned controls and power windows and door locks. The center console includes cupholders, a storage tray and a large storage compartment. Driver and passenger-side airbags are standard.



### Built for comfort.

The high-back Stitchcraft cab seats are multi-position and have fixed lumbar support for added comfort. They are available with a leather upgrade.



### Look here.

Minnie's exterior mirrors feature flat glass and convex corner mirrors for a wide field of vision. The available electric remote with defrost makes adjustments easy. A dual break-away design allows the mirror arms to swivel without damaging mirrors or doors.



### Start earlier, stay later.

Use the Minnie earlier or later in the season with available heated holding tanks. The water heater bypass valve and winterization valve are standard.



### Everything is A-OK.

Quickly check vital functions like tank levels, LP gas and battery power at a glance with Minnie's flush-mounted monitor panel, conveniently located in the galley.



### Tow with ease.

The 3,500-lb. capacity and 350-lb. tongue weight hitch comes standard on the Minnie. □



### Come clean.

Having a good time sometimes means getting sandy or muddy. Just turn on the water pump switch located conveniently inside the exterior wash station, and cleanups are a snap.



### Sound idea.

Minnie has an available exterior entertainment center that includes AM/FM stereo with antenna, a cassette or CD player, 12-volt DC receptacle, TV jack, 110-volt outlet and speakers. Compartment locks securely.



### Get the dish.

Expand your viewing options with the Minnie's available TV satellite dish. Pre-wiring for the dish and elevation sensor comes standard.



### The power's in your hands.

You'll get quiet, efficient power from the available 4,000-watt Onan® Micro-Quiet™ generator. It supplies 110-volt electrical power when shoreline power isn't possible. 2003 standard upgrades include a larger capacity 45-amp. electronic converter. It provides improved battery charging, 12-volt DC output and quieter operation.



### Clear and dry.

The built-in rain gutter channels water to the front and rear of the coach, away from windows and doors. Keep dry under the available vinyl patio awning.\*



### You can take it with you.

The slideout system found on the Minnie 24F, 29B and 31C uses the first electric-powered slideout system to meet our stringent quality and performance standards. It features powerful, reliable, dual-ram, dual-motor technology with electronic synchronization, which improves room movement and provides for better sealing, along with built-in diagnostics for easier service. The Minnie 31C also includes the StoreMore slideout system, which is a Winnebago Industries original and is the industry's premium slideout system. StoreMore allows the large storage compartments that accommodate oversized and odd-shaped items to extend with the slideroom for easy access.

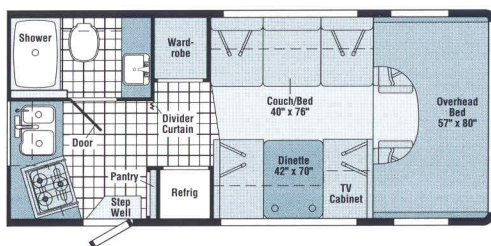


### The outside story.

Minnie's one-piece fiberglass sidewall is amazingly tough—typical for Winnebago Industries' design. Also available: an awning to keep you dry and stainless steel wheel liners to resist corrosion over the long haul. Step into and out of Minnie with ease, thanks to functional yet good-looking running boards of corrosion-resistant aluminum.

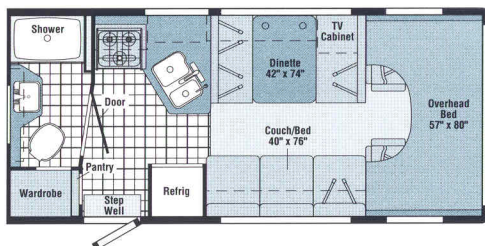
## FLOORPLANS

## INTERIORS



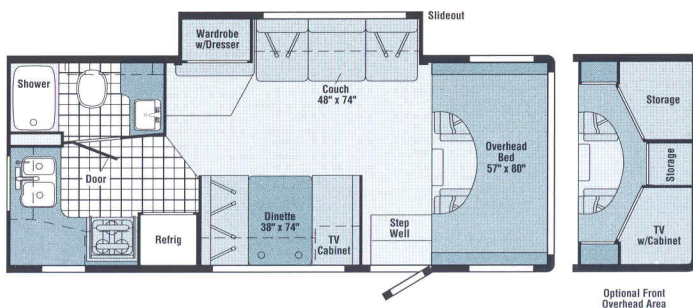
### 22E

- Convenient angled rear galley
- Generous sleeping and seating accommodations
- Rear corner bath



### 22R

- Roomy angled galley
- Rear bath with large wardrobe
- Generous sleeping and seating accommodations



### 24F

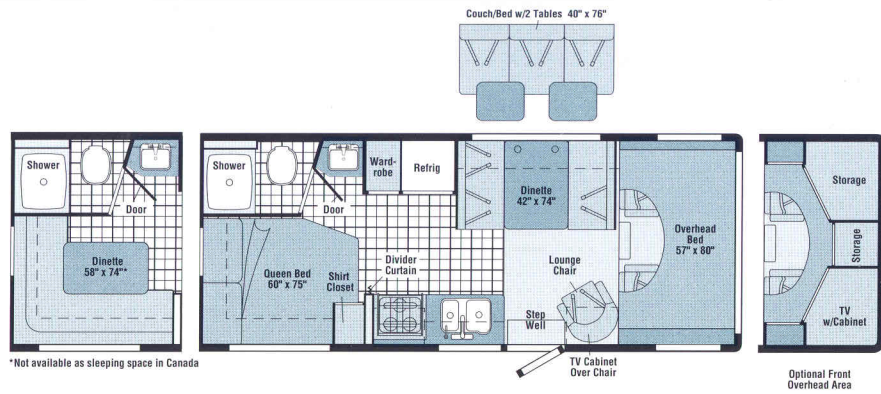
- Couch/wardrobe slideout
- Roomy wardrobe storage area
- Large, L-shaped rear galley
- Overhead bunk or available entertainment center with 25" TV



Blue Cameo



Sagebrush

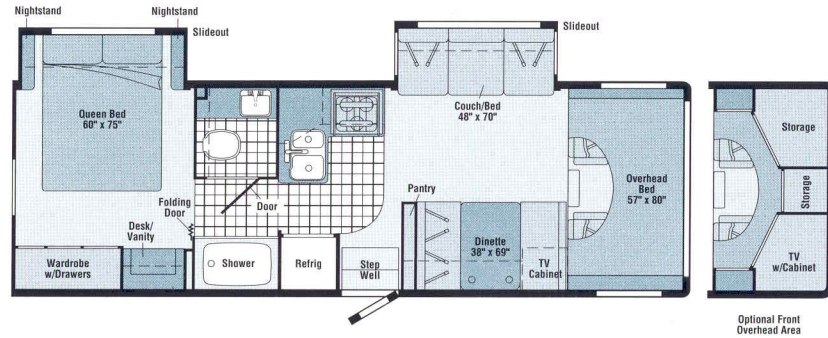


### 24V

- Private rear bath and bedroom area with queen-size bed
- Swivel/glider lounge chair
- Available rear L-shaped dinette
- Overhead bunk or available entertainment center with 25" TV



Sandstone

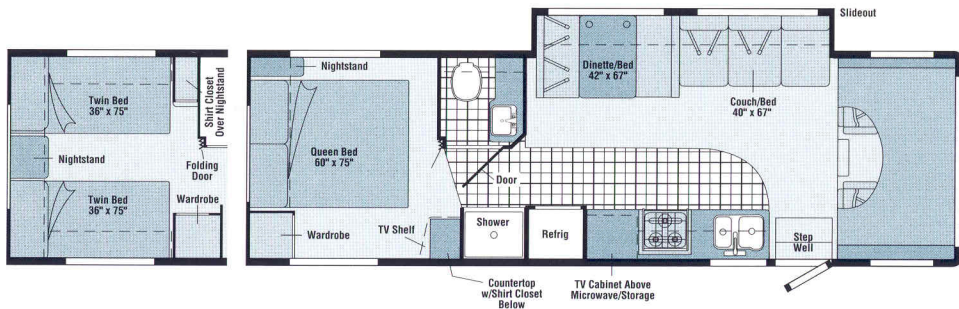


### 29B

- Dual slideout floorplan
- Split bath design
- Large bedroom wardrobe with drawers and desk/vanity area
- Overhead bunk or available entertainment center with 25" TV



Portsmouth Oak Woodgrain



### 31C

- Couch/dinette **STOREMORE** slideout system
- In-line galley area with TV cabinet, microwave and ample storage areas
- Available with queen or twin beds



Note: Dimensions shown are for sleeping space only and may vary due to styling differences. Dashed lines denote overhead storage areas.

# 2003 Winnebago Minnie® Specifications

	22E	22R	24F	24V	29B	31C
Length – Ford/Chev	22'1"/22'6"	22'1"/22'6"	24'8"/25'	24'6"/24'11"	29'4"/NA	31'4"/NA
Exterior Height w/A/C* – Ford/Chev	11'2"/11'3"†	11'2"/11'3"†	11'2"/11'3"†	11'2"/11'3"†	11'4"†/NA	11'4"†/NA
Exterior Width <sup>Δ</sup>	8'5.5"	8'5.5"	8'5.5"	8'5.5"	8'5.5"	8'5.5"
Exterior Storage (cu. ft.) <sup>○</sup>	11.1	12	33.9	26.9†	52.3	39.6
Interior Height	6'8"	6'8"	6'8"	6'8"	6'8"	6'8"
Interior Width	8'	8'	8'	8'	8'	8'
Fresh Water Capacity w/Heater* (gal.)	36	36	39	46	34	37
Holding Tank Capacity – Black/Gray (gal.)	30/36	36/30	37/35	37/35	25/31	34/32
LP Capacity <sup>◇</sup> (gal.)	12	12	12	12	18	18
Fuel Capacity – Ford/Chev (gal.)	37/35	37/35	55/55	55/55	55/NA	55/NA
GCWR – Ford/Chev/Ford Diesel (lbs.)	18,500/17,000/NA	18,500/17,000/NA	20,000/17,000/20,000	18,500/17,000/NA	20,000/NA/NA	20,000/NA/NA
GVWR – Ford/Chev/Ford Diesel (lbs.)	10,700/12,300/NA	10,700/12,300/NA	14,050/12,300/14,050 <sup>∞</sup>	11,500/12,300/NA	14,050/NA/NA	14,050/NA/NA
GAWR – Front, Ford/Chev/Ford Diesel (lbs.)	3,900/4,300/NA	3,900/4,300/NA	4,600/4,300/4,600	4,600/4,300/NA	4,600/NA/NA	4,600/NA/NA
GAWR – Rear, Ford/Chev/Ford Diesel (lbs.)	7,500/8,600/NA	7,500/8,600/NA	9,450/8,600/9,450	7,800/8,600/NA	9,450/NA/NA	9,450/NA/NA
Wheelbase – Ford/Chev	138"/139"	138"/139"	158"/159"	158"/159"	190"/NA	220"/NA

Standard - S Optional - O

22E 22R 24F 24V 29B 31C

22E 22R 24F 24V 29B 31C

## AUTOMOTIVE/CHASSIS

Chassis - Ford E350 6.8L Super-Duty V10 SOHC Triton® engine, 305-hp, automatic 4-speed overdrive transmission, 4-wheel anti-lock brakes, 130-amp. alternator, dual airbags	S	S	S			
Chassis - Ford E450 6.8L Super-Duty V10 SOHC Triton® engine, 305-hp, automatic 4-speed overdrive transmission, 4-wheel anti-lock brakes, 130-amp. alternator, dual airbags			S	S	S	
Chassis - Chevrolet 6.0L V8 engine, 4L80-E transmission, 4-wheel anti-lock brakes, 145-amp. alternator, dual airbags	O	O	O	O		
Chassis* - Ford E450 7.3L Power Stroke® diesel engine, 215-hp, automatic 4-speed overdrive transmission, 4-wheel anti-lock brakes, 130-amp. alternator, dual airbags			O			
Air Springs auxiliary rear					O	O
Tire spare, Tire Tool wrench, Trailer Hitch 3,500-lbs. drawbar/350-lbs. maximum vertical tongue weight & wiring, <input type="checkbox"/> Wheelcovers stainless steel	S	S	S	S	S	S
Wheel Liners stainless steel	O	O	O	O	O	O

## CAB AREA & DRIVER CONVENIENCES

Beverage Holder, Cab Seats (fabric) w/3-point adjustable seat belts, armrest, lumbar support, multi-adjustable slide/recline, Cigarette Lighter (NA Chevy)/12-Volt Powerpoint, Cruise Control, Curtain cab divider, Domelight, Floor Mats rubber driver & passenger, Hood Release, Power Door Locks & Windows, Steering Wheel tilt w/power assist, Sunvisors (2), Trim Panels driver & passenger doors (chassis supplied)	S	S	S	S	S	S
Cab Seats Leather seating surface	O	O	O	O	O	O

## ENTERTAINMENT

Satellite System Ready, TV Enhancement Package antenna (amplified), 12-volt powerpoint(s), interior jack(s), coax wiring, cable input (31C includes bedroom TV stand or shelf)*	S	S	S	S	S	S
<input type="checkbox"/> (Cab) AM/FM stereo cassette/CD, speakers (4), Ford	S	S	S	S	S	S

## BATH

Cabinet lavatory, Cabinet medicine, Faucet (lavatory) dual-control, Faucet (shower) dual-control w/flexible showerhead, Roof Vent power, Shower w/removable clothes rod, light & skylight, Shower Door folding, Sink rectangular, Tissue Holder, Toilet w/foot-pedal flush, Towel Rack 3-rod, mounted to door	S	S	S	S	S	S
Shower Door glass, hinged						O
Shower Doors glass, sliding						O
Towel Bar	S	S	S	S	S	S
Towel Ring	S	S	S	S	S	S
Mirror	S	S	S	S	S	S

## BEDROOM

Bed queen						S
Bed queen, w/underbed storage						S S
Beds* twin, w/underbed storage						O
Bedsprad pillow shams						S S S
Light(s) decorative wall lamp(s)						S S
Nightstand(s) w/drawer(s)						S S
Roof Vent nonpowered						S S
Shirt Closet						S S
Vanity Cabinet w/flip-up countertop, folding chair						S
Wardrobe Cabinet w/drawers						S S

## EXTERIOR

Awning Rails w/rain gutters, Door entrance w/separate screen door, deadbolt lock, Entrance Door Step single, manual, Ladder, Light porch light w/interior switch, Mirrors plate mount, manual adjust w/convex. Mudflaps rear. Receptacle AC duplex.	S	S	S	S	S	S
---	---	---	---	---	---	---

<b>Radio (cab)</b> AM/FM stereo, CD, speakers (4), Chevrolet	0	0	0	0	0	0
<b>Entertainment Center (Exterior) w/Cassette or CD Player</b> DC receptacle, AC duplex receptacle, AM/FM radio, TV jack, radio antenna, removable table, speakers (2), lockable compartment						
<b>Satellite Dish Antenna</b> , RV digital, elevation sensing unit	0	0	0	0	0	0
<b>TV 13" Color 12-Volt &amp; VCP*</b> w/remotes, front lounge/dinette area w/slide/swivel shelf	0	0	0	0	0	
<b>TV 19" Color AC</b> w/remote, video selection system, galley overhead cabinet*						0
<b>TV 19" Color AC &amp; VCR</b> w/remotes, video selection system, galley overhead cabinet*						0
<b>TV 25" Color AC*</b> w/remote, video selection system, includes front overhead entertainment center			0	0	0	
<b>VCR</b> w/remote*			0	0	0	

## INTERIOR

<b>Bunk</b> front overhead w/mattress, sliding side windows, privacy curtain, side storage cabinets, <b>Ceiling</b> textured fabric, <b>Cupholder(s)* Lights</b> ceiling, incandescent w/wall switches,* <b>Roof Vent</b> nonpowered, front overhead bunk,* <b>Shades</b> pleated, day/night (lounge, dinette, bedroom), mini blinds (bath, galley)	S	S	S	S	S	S
<b>Bunk Ladder</b>			S			S
<b>Bunk Window*</b> delete	0	0	0	0	0	0
<b>Mirror</b> lounge			S			S
<b>Wardrobe Cabinet</b> carpeted shelf, clothes rod, mirrored door(s)	S	S	S	S		
<b>Windows</b> dual-pane/thermo-insulated	0	0	0	0	0	0

## CABINETRY

<b>Woodgrain</b> Portsmouth Oak stile-and-rail construction w/raised panel inserts on upper doors	S	S	S	S	S	S
--	---	---	---	---	---	---

## COUNTERTOPS

<b>Laminate</b> w/T-mold edge	S	S	S	S	S	S
-------------------------------	---	---	---	---	---	---

## FLOORCOVERING

<b>Carpeting</b> w/pad, <b>Vinyl</b> bath & galley	S	S	S	S	S	S
--	---	---	---	---	---	---

## FURNITURE

<b>Dinette</b> access to storage below	S	S	S	S	S	S
<b>Dinette (Rear)</b> L-shaped*						0
<b>Lounge Chair</b> w/swivel/slide						S
<b>Couch</b>	S	S	S	0	S	S
<b>Couch</b> w/2 pedestal tables						0

## GALLEY

<b>Faucet</b> single-control, <b>Microwave Oven</b> , <b>Range Hood</b> w/light & fan, <b>Range</b> three-burner w/oven, Magic Chef, <b>Refrigerator/Freezer</b> double-door, Norcold*, <b>Sink</b> molded, double w/sink cover (countertop material), <b>Wall Border</b>	S	S	S	S	S	S
<b>Countertop</b> flip-up extension				S	S	S
<b>Galley Rail</b> countertop material			S			S
<b>Pantry</b>	S	S			S	
<b>Spice Rack</b> built into cabinet		S				

<b>Awning*</b> patio	0	0	0	0	0	0
<b>Entrance Door Step</b> single, electric w/doorjamb switch	0	0	0	0	0	0
<b>Mirrors</b> plate mount, electric remote w/defrost	0	0	0	0	0	0

## SYSTEMS

<b>Auxiliary Start Circuit, Battery (Coach)</b> Group 24 deep cycle, <b>Battery (Coach)</b> disconnect system, <b>Battery Charge Control</b> automatic dual, <b>Drain</b> 1" water tank, <b>Electrical Distribution System</b> DC fuses, AC breakers, 45-amp. electronic converter/charger, <b>Generator</b> <b>Prep Kit, Monitor Panel</b> wall-mount, battery condition gauge, generator hourmeter gauge,* generator start/stop switch,* holding tank levels, LP tank level, water heater light(s), water heater switch, water pump switch, water tank level, <b>Power Cord</b> 30-amp. 25'; <b>Sewer Hose</b> 10'; stores in bumper, <b>Tank</b> LP, permanent mount w/gauge, <b>Water Heater</b> 6-gallon electronic ignition, LP gas, <b>Water Heater</b> <b>Winterization Bypass Valve</b> manual, <b>Water Hookup</b> city, <b>Water Pump</b> demand, <b>Water System Winterizing Valve</b> manual, <b>Water Tank Fill</b> w/locking door	S	S	S	S	S	S
--	---	---	---	---	---	---

<b>Air Conditioner (Roof)</b> 13,500 BTU, ceiling-ducted w/wall thermostat	S	S	S	S		
<b>Air Conditioner (Roof)</b> 14,800 BTU, ceiling-ducted w/wall thermostat					S	S
<b>Heat Pump*</b> w/roof A/C	0	0	0	0	0	0
<b>Batteries (Coach) (2)</b> Group 24 deep cycle maintenance free	0	0	0	0	0	0
<b>Drainage System*</b> heated, electric, 1 heat pad per tank, pipe wraps & lighted on/off switch next to monitor panel	0	0	0	0	0	0
<b>Furnace</b> 25,000 BTU, low profile	S	S	S	S		
<b>Furnace</b> 30,000 BTU, low profile					S	S
<b>Generator*</b> 3,600-watt, Onan MicroQuiet, LP					0	
<b>Generator*</b> 4,000-watt, Onan MicroQuiet, gas	0	0	0	0	0	0
<b>Inverter*</b> DC/AC, 130-watt					0	0
<b>Wash Station</b> exterior, w/pump switch	0	0	0	0	0	0

## SLIDEOUT

<b>Slideout Room</b> front couch/wardrobe w/slideroom cover	S					
<b>Slideout Room</b> front couch w/slideroom cover						S
<b>Slideout Room</b> rear bed w/slideroom cover					S	
<b>Slideout Room</b> front couch/dinette w/slideroom cover, <b>STOREMORE</b>						S

## SAFETY

<b>Airbags</b> driver & passenger, <b>Assist Handle</b> exterior, <b>Assist Strap</b> interior, <b>Bumpers</b> front & rear, <b>Detectors/Alarms</b> LP leak, smoke, carbon monoxide, <b>Fire Extinguisher</b> 10 B.C., <b>Ground Fault Interrupter</b> , <b>Light</b> center high-mount stop lamp, <b>Light(s)</b> courtesy w/wall switch(es), <b>Seat Belts</b> cab, 3-point, <b>Seat Belts</b> lap (in selected areas)	S	S	S	S	S	S
<b>Window</b> escape				S	S	S

## WARRANTY

<b>12-month/15,000-mile basic limited warranty**</b>	S	S	S	S	S	S
<b>36-month/36,000-mile warranty on structure**</b>						
<b>10-year limited parts &amp; labor warranty on roof skin</b>						

\* The height of each model is based on the curb weight of a typically equipped unit on the standard chassis. The actual height of your vehicle may vary by as much as 2" depending on chassis or equipment variations.

o Your motor home's load capacity is designated by weight, not by volume, so you cannot necessarily use all available space when loading your motor home.

Δ Minnie floorplans feature a widebody design — over 96". In making your purchase decision, you should be aware that some states restrict access on some or all state roads to 96" in body width. Before making your purchase decision, you should confirm the road usage laws in the states of interest to you. \*Not all items available in combination. See dealer for details. NA = Not Available.

◇ Capacities shown are tank manufacturer's listed water capacity (W.C.). Actual filled LP capacity is 80% of listing due to overfilling prevention device on tank. \*\* See your dealer for complete warranty information.

□ Actual towing capacity is dependent on your particular loading and towing circumstances which includes the GVWR, GAWR & GCWR as well as adequate trailer brakes. Please refer to your vehicle's operator's manual for further towing information. † Measurements are based on the most recent information available. See your dealer for updated specifications. ∞The 24F optional diesel with California emissions is a 14,000 GVWR.

Winnebago Industries' continuing program of product improvement makes specifications, equipment, model availability and prices subject to change without notice. Comparisons to other motor homes are based on the most recent information available.

## Not all motor homes are created equal.

As you take a closer look, you'll see that there is much more to the Winnebago Minnie than a long list of standard features and compelling floorplans. Beneath it all you'll find a SuperStructure™ foundation of strength and durability, and Winnebago Industries' recognized service and warranty support.



### We are committed to service.

We back our motor homes with the best after-the-sale service in the industry.

- 12-month/15,000-mile basic limited warranty
- 36-month/36,000-mile warranty on structure
- Standard 10-year limited parts-and-labor roof skin warranty
- Complimentary 24-hour Roadside Assistance Program
- TripSaver Fast Track Parts. TripSaver guarantees that in-stock warranty parts ship directly to your dealer within 24 hours
- Nationwide Dealer service network



### Certified quality.

Recreation Vehicle Dealer Association members annually rate RV manufacturers on the quality of their products, and on their sales and service support. Winnebago Industries has achieved the coveted Quality Circle Award every year since its inception, the only major motor home manufacturer to do so.



### Learn more about what sets Winnebago Industries apart.

Ask your dealer for this guide. It will help you learn what makes Winnebago Industries motor homes distinctly superior to other brands.

### Warning: Joining WIT has been known to cause excessive fun.



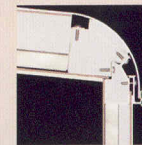
Winnebago-Itasca Travelers (WIT) is a club for owners of Winnebago Industries motor homes. WIT is a great way to meet people and offers you:

- Caravans and rallies
- Local and state group activities
- Benefits for RVers



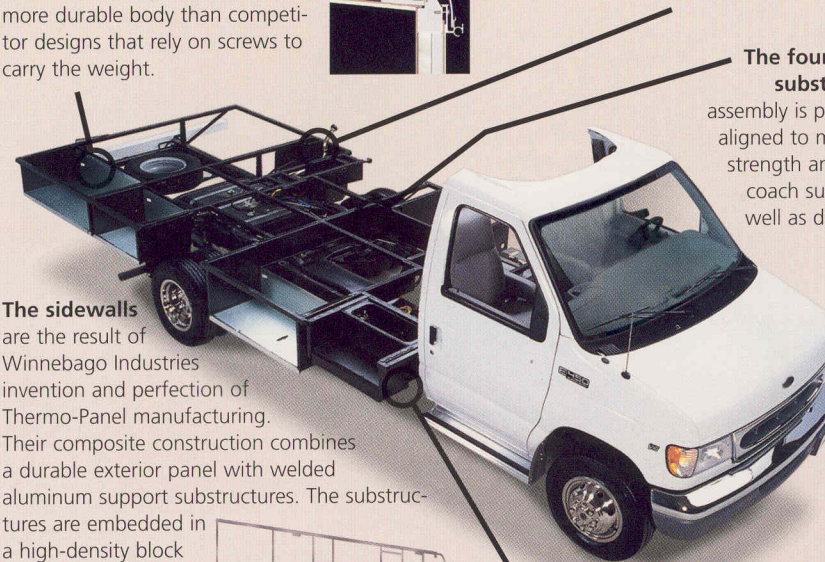
is the term given to Winnebago Industries' structural motor home design and construction. Rather than a single component, it is the culmination of design integration that incorporates steel and aluminum substructures, welded tubular steel floor risers, interlocking joint technology, and Thermo-Panel® floor, roof and sidewalls to form a high-strength, durable vehicle body.

**Interlocking joint construction** utilizes advanced extruded aluminum structural components to create integrated floor-to-sidewall, and sidewall-to-roof joints. This design effectively distributes the weight of the walls and roof, making a stronger and more durable body than competitor designs that rely on screws to carry the weight.

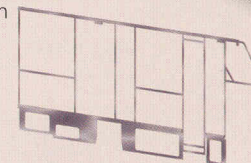


**Tubular steel risers** feature a truss-design core for superior strength and provide a stable base for the floor structure and storage compartments.

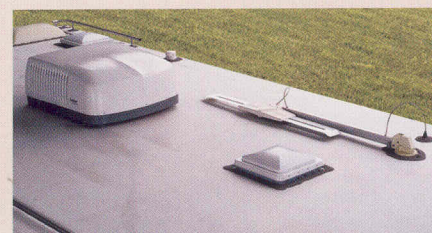
**The foundation substructure** assembly is precision-aligned to maximize strength and cross-coach support as well as durability.



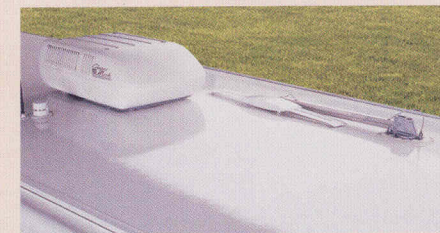
**The sidewalls** are the result of Winnebago Industries invention and perfection of Thermo-Panel manufacturing. Their composite construction combines a durable exterior panel with welded aluminum support substructures. The substructures are embedded in a high-density block foam insulation core to create a strong, durable, yet light-weight sidewall.



**Critical steel components** are treated using an advanced electrodeposition coating process that provides superior corrosion protection.



One-year-old competitor's rubber roof



One-year-old Winnebago Industries fiberglass roof

### Built to a higher standard.

The Minnie features a crowned, one-piece fiberglass roof backed with a 10-year limited parts-and-labor roof skin warranty. Fiberglass offers superior strength, attractiveness and durability over rubber roofs found on many competitive models. Over time, rubber roofs are susceptible to chalking, streaking and degradation, and have less puncture and tear resistance than fiberglass.



©2002 Winnebago Industries, Inc., Forest City, IA 50436. Printed in USA.

Seat belts are your most important hookup. Always buckle up.  
Visit us at [www.winnebagoind.com](http://www.winnebagoind.com)