

You'll take
it everywhere.

Though it's
pretty impressive
just sitting in
the driveway.





Looking for a well-equipped Class A motor home? The search ends here.

Let's face it. You have a lot of choices when it comes to picking a motor home. Especially a Class A. We think those choices will narrow drastically after you see what's inside the 2004 Sightseer. Experience for yourself Winnebago specialties like the hoop-base swivel glider, 25" stereo TV, OnePlace™ Systems Center and RV Radio.®

Could you find another Class A motor home in this price range? Probably. But finding one that combines value with the craftsmanship, attention to detail and impressive roster of amenities may prove impossible. You'll notice many key Sightseer product features shown in this brochure. We hope this helps you select the motor home that is perfect for you.

35N-Riverside Sage with Portsmouth Oak

Ah, the good life.

The StoreMore® slideout increases your living space at the touch of a button. You'll enjoy the extra room while relaxing on premium Stitchcraft furniture. Interior climate comfort is supplied by floor-ducted heat and ceiling-ducted air conditioning for optimal air movement, with both controlled by a wall thermostat. When sunlight fades to starlight, you'll appreciate Sightseer's abundant lighting activated by wall-mounted switches. A large assist bar is conveniently placed for easy access.

Everything. And the kitchen sink.

The galley is conveniently packaged, efficiently designed and has everything you need to "go gourmet": a Magic Chef® three-burner range top (one high-output) with oven, vented range hood with light and fan, microwave, molded sink, and flip-up countertop extension and sink cover that increase your work surface. A two-door refrigerator/freezer is standard. So is the Congoleum® vinyl flooring that's not only attractive and durable, but makes for easy cleanups.



Space available.

You'll appreciate the abundant storage in the Sightseer's galley. The double-door refrigerator/freezer operates on 110-volt AC or LP to keep everything cool no matter where you go. The clever design of the pantry area maximizes storage with pullout trays on the 27C, 33L and 35N. For added flexibility, the shelves are easily removed to create a spacious wardrobe on the 27C and 30B.



Roger wilco.

For staying in touch around the campground or on day trips, the four available two-way radios recharge from house batteries at a built-in charging station. Nickel-metal hydride batteries provide 90 minutes of talk time and up to 15 hours of standby on a single charge.

The power's in your hands.

PowerLine® helps you manage it. This silent, fully automated energy management system monitors electrical usage and cycles appliances off if demand exceeds available supply, and then cycles them on again once the power load is reduced. It also allows you to run two roof air conditioners on a 30-amp. shoreline circuit without worrying about system overload. (Standard on the 33L and 35N.)



All systems go.

Sightseer's OnePlace Systems Center lets you check vital functions like tank levels, LP gas and battery power at a glance. It places frequently used switches, gauges and controls in one convenient and easy-to-access location.



35N-Blue Cameo with Portsmouth Oak



A cozy, versatile nest.

Fall asleep on Sightseer's walk-around queen-size bed with Serta® mattress. There's also plenty of storage in the bedroom—overhead, under the bed and in the roomy wardrobe. Choose the available 13" TV with remote for your viewing enjoyment. A bedroom slideout is standard on the 35N.



Shower power.

Sightseer's bath-area comforts include a dual-control faucet with flexible showerhead, shower skylight and a removable clothes rod. Spacious cabinets and a residential-height toilet are standard. The 27C and 30B feature a single-hinge glass shower door while the 33L and 35N offer a sliding glass door.

Kick back.

Sightseer's standard 25" stereo TV with remote is positioned to optimize viewing pleasure. Enjoy the available DVD/VCR stereo combo with remote and the available digital satellite dish antenna lets you select a favorite movie or premium channels. Choose the available 130-watt inverter and enjoy TV even when you're not connected to shoreline or generator power (rewiring is standard).



Switch into glide.

The Stitchcraft swivel glider with its smooth-action gliding, high back and wide seat wrap you in comfort. You can even reposition it within the lounge area when you're not on the move. The glider action can also be locked when you're traveling.



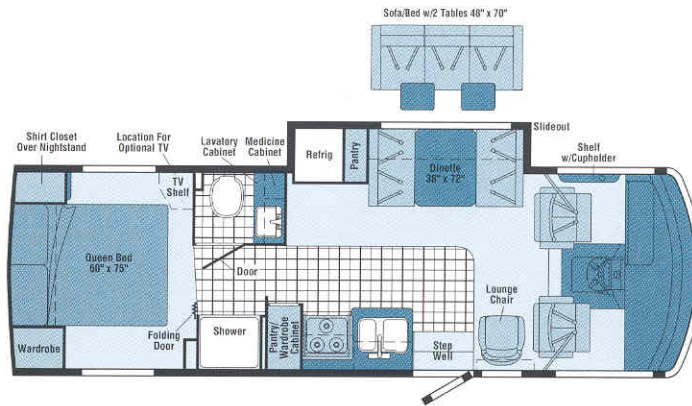
The outside story.

Sightseer's one-piece fiberglass sidewalls are tough—just what you'd expect to find in a Winnebago Industries design. Laterally mounted floor risers allow for basement storage. Also available: stainless steel wheel liners to resist corrosion and look great over the long haul.

FLOORPLANS

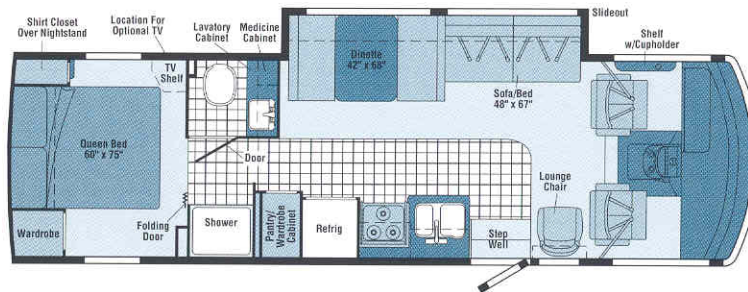
INTERIORS

Model 27C



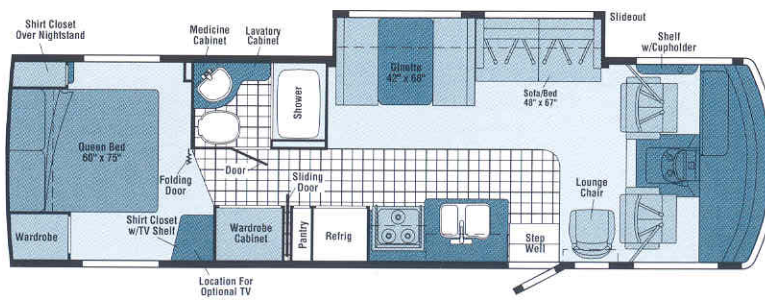
Blue Cameo

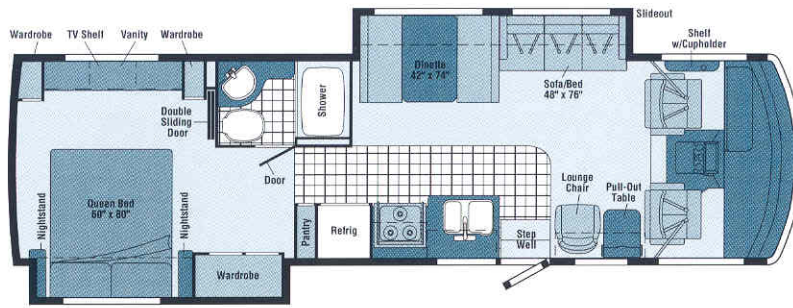
Model 30B



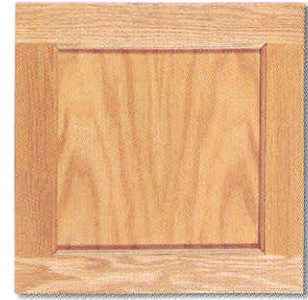
Riverside Sage

Model 33L





Model 35N



Portsmouth Oak



Note: Dimensions shown are for sleeping space only and may vary due to styling differences. Dashed lines denote overhead storage areas.



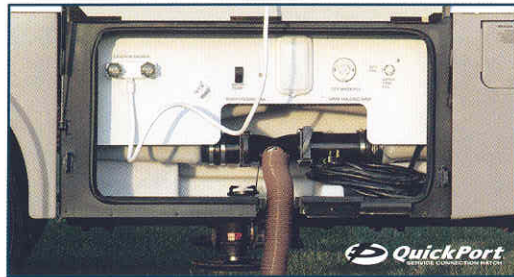
You're in the driver's seat.

And it's a great one with its high back, fixed lumbar support and 3-point seat belt. This luxurious Stitchcraft design features multi-position recline, swivel/slide features and multi-position armrests.



See what you've been missing.

Sightseer's available rearview monitor is invaluable when backing up or parking. Sightseer comes prewired for this option, so you can choose it now, or have it installed later.



Convenient exterior service center.

Important connections are conveniently gathered in a single exterior compartment. For easy hookups, the new QuickPort™ Service Connection Hatch features slots for power cords and hoses. A heated holding tank and water heater winterization bypass valve let you extend your camping season. An exterior wash station feature is also available.



At your command.

Switches, gauges and controls are all large, clearly labeled and easy to reach. When parked, the available front and rear hydraulic leveling jacks (with dash-mounted, touch-pad control and "jacks down" indicator light) keep Sightseer stable and level. The centrally mounted convenience center is easily accessible and includes cupholders and a storage area. Another bonus: the dash flips up for quicker, easier service.



Quiet, efficient power.

The Onan® Marquis Gold™ generator (shown) supplies 5,500 watts of 110-volt AC power and is standard on 33L and 35N. The 4,000-watt Onan MicroQuiet™ is standard on the 27C and 30B.



This radio's a "wow."

The RV Radio features large control knobs, easy-to-operate buttons, an AM/FM stereo cassette/CD player and a built-in weather band. And you can run it from the house batteries by flipping the radio power switch.



The key to it all.

The KeyOne™ System allows one key to open most door locks. What could be simpler? For added convenience, the key is double bitted so it easily fits into the lock no matter which way the key is inserted.

2004 Winnebago Sightseer™ Specifications

	27C	30B	33L	35N NEW
Length ^a	27'11"	30'10"	33'2"	35'2"
Exterior Height w/A/C ^b -Ford/workhorse ^a	12'0" or 12'2" / 12'0"	11'11" or 12'1" / 11'11"	11'11" or 12'1" / 11'11"	12'2" or 12'4" / 12'2"
Exterior Width ^c	8'6"	8'6"	8'6"	8'6"
Exterior Storage ^d (cu. ft.)	79.9	107.4	115.9	125.1
Interior Height	6'8"	6'8"	6'8"	6'8"
Interior Width	8'5"	8'5"	8'5"	8'5"
Fresh Water Capacity w/Heater (gal.)	75	75	75	72
Holding Tank Capacity – Black/Gray (gal.)	36/46	41/40	41/40	40/35
LP Capacity ^e (gal.)	18	18	18	18
Fuel Capacity F/W (gal.)	NA/40	75/75	75/75	75/75
GCWR Ford/Workhorse ^f (lbs.)	NA/19,000	26,000/22,000	26,000/22,000	26,000/26,000
GVWR Ford/Workhorse (lbs.)	NA/15,000	18,000/18,000	18,000/18,000	20,500/20,700
GAWR – Front Ford/Workhorse (lbs.)	NA/6,000	7,000/6,000	7,000/6,000	7,000/7,500
GAWR – Rear Ford/Workhorse (lbs.)	NA/11,000	11,000/12,000	11,000/12,000	13,500/13,500
Wheelbase	168"	190"	208"	228"

Standard - S Optional - O

27C 30B 33L 35N

27C 30B 33L 35N

AUTOMOTIVE/CHASSIS

Chassis – Ford® 6.8L SOHC Triton® V10 310-hp, 4-speed overdrive transmission, hydraulic brakes, 4-wheel ABS, 130-amp. alternator	S	S	S	
Chassis – Workhorse™ 8.1L Vortec V8 340-hp 4L85E, 4-speed overdrive transmission, 4-wheel anti-lock disc brakes, 145-amp. alternator	S	O	O	
Chassis – Workhorse 8.1L Vortec V8 340-hp, Allison® 1000 5-speed overdrive transmission, hydraulic brakes, 145-amp. alternator				O
Tire spare, Tire Tool wrench, Trailer Hitch ¹ 5,000-lbs. drawbar/350-lbs. maximum vertical tongue weight & wiring, Wheel Covers	S	S	S	S
Leveling Jacks hydraulic, w/touch pad control, Kwikiee®	O	O	O	O
Shocks/Stabilizer Package front, Workhorse	O	O	O	
Wheel Liners stainless steel	O	O	O	O

CAB AREA & DRIVER CONVENIENCES

Beverage Holder passenger side, Cab Seats (fabric) w/3-point shoulder & lap seat belts w/retractors, armrests, lumbar support (fixed), multi-adjustable slide/recline & swivel, Cigarette Lighter/12-Volt Powerpoint, Convenience Tray w/cupholders, Cruise Control, Map Light, Map Pocket, Steering Wheel tilt w/power assist, Sunvisors, Trim Panel driver-side w/cupholder, storage tray & bubble level indicator, Window (driver & passenger) full slider w/screen, Windshield Wipers intermittent	S	S	S	S
Defroster Fans (2) auxiliary 2-speed w/instrument panel switch, Monitor System rearview w/single camera & 1-way audio, Audiovox®	O	O	O	O

ENTERTAINMENT

RV RADIO (Cab) AM/FM stereo cassette/CD, speakers (4), Radio Power Switch main/auxiliary battery, Satellite System Ready, TV 25" Color AC stereo w/remote, TV Enhancement Package antenna (amplified), 12-volt powerpoints, interior jacks, coax wiring, cable input, splitter	S	S	S	S
DVD/VCR w/remote, stereo, Entertainment Center (Exterior) w/CD player, DC receptacle, AC duplex receptacle, AM/FM radio, TV jack, radio antenna, speakers (2), lockable compartment, removable TV table, Radios (4) two-way, Satellite Dish Antenna RV digital, manual, TV 13" Color DC w/remote, video selection system, bedroom	O	O	O	O

INTERIOR

Blinds mini (lounge, dinette), Ceiling fabric, Clock, Curtain front wraparound w/track, Lights reading, adjustable halogen (overheads), Lights ceiling, incandescent w/wall switches, Picture, Roof Vent nonpowered lounge, Shades pleated (bedroom)	S	S	S	S
Roof Vent powered ventilator fan, lounge	O	O	O	O

CABINETRY

Portsmouth Oak	S	S	S	S
----------------	---	---	---	---

COUNTERTOPS

BATH

Cabinets lavatory, medicine, Faucet (Lavatory) dual-control, Faucet (Shower) dual-control w/flexible showerhead, Light shower, Roof Vent powered, Shower w/removable clothes rod, Shower Door glass, Shower Skylight, Sink, Tissue Holder, Toilet w/foot-pedal flush, Towel Rack 3-rod, mounted to door, Wall Border	S	S	S	S
Mirror frameless w/beveled edge	S	S		
Towel Ring			S	S

BEDROOM

Bed queen, Serta innerspring, w/underbed storage, Bedspread pillow shams, throw pillow, headboard, Lights decorative wall lamps, Nightstand(s), TV Shelf, Wall Border, Wardrobe Cabinet carpeted shelf, clothes rod, drawers, light (33L, 35N)	S	S	S	S
Shirt Closet	S	S		
Shirt Closets (2)			S	
Vanity Cabinet				S

EXTERIOR

Awning Rails w/rain gutters, Door entrance w/separate screen door, deadbolt lock, Entrance Door Steps double, electric w/doorjamb switch, Light porch w/interior switch, Mirrors manual adjust w/convex, Mudflaps front, Receptacle AC duplex, Sidewall Skin one-piece smooth fiberglass, Storage Compartments valance panels, gas strut, single-paddle latch, lights, trunk liner, TriMark® KeyOne System	S	S	S	S
Awning patio, Ladder, Mirrors electric/remote w/defrost, Undercoating Workhorse only	O	O	O	O

SYSTEMS

Automotive Heater/Air Conditioner, Auxiliary Start Circuit, Batteries (Coach) (2) deep-cycle, group 24, Battery (Coach) disconnect system, Battery Charge Control automatic dual, Electrical Distribution System AC breakers, DC fuses, 45-amp. converter/charger, ONEPLACE™ Systems Center wall-mount, energy management display (33L and 35N only), battery condition gauge, generator hourmeter gauge, generator start/stop switch, heating/A/C thermostat, holding tank levels, LP tank level, water heater light(s), water heater switch, water pump switch, water tank level, Power Cord 30-amp., Service Center city water hookup/tank diverter fill, drainage valves, sewer hose, cable input, power cord, Sewer Hose 10', Tank holding, heated compartment, Tank LP, permanent mount w/gauge, Water Heater 6-gallon, electronic ignition, LP gas, Water Pump demand, Water System Winterization Package bypass valve, water heater, Water Tank Fill gravity	S	S	S	S
Air Conditioner (Roof) 14,800 BTU, ceiling-ducted w/wall thermostat	S	S		
Air Conditioners (2) (Roof) high-efficiency, ceiling-ducted w/wall thermostat			S	S
Furnace 30,000 BTU, low profile, floor ducted	S	S		
Furnace 35,000 BTU, low profile, floor ducted			S	
Furnace 40,000 BTU, low profile, floor ducted				S
Generator 4,000-watt, Onan, MicroQuiet gas	S	S		
Generator 5,500-watt, Onan, Marathon Gold gas				S

Laminate w/round edging	S	S	S	S
FLOORCOVERING				
Carpeting w/pad, Vinyl bath & galley	S	S	S	S
FURNITURE				
Dinette w/access to storage below	S	S	S	S
Sofa tables (2)	0			
Sofa w/throw pillow		S	S	S
Lounge Chair hoop-base w/swivel/glider, cabinet w/table, magazine rack				S
Lounge Chair hoop-base w/swivel/glider	S	S	S	
GALLEY				
Countertop w/flip-up extension, Faucet single-control, Microwave Oven Samsung,*	S	S	S	S
Pantry, Range Hood vented w/light & fan, Range three-burner (one high-output) w/oven, Magic Chef, Refrigerator/Freezer double-door, Sink recessed, molded, double-bowl w/sink cover (countertop material), Wall Border				

Inverter DC/AC, 130-watt, Wash Station exterior, w/pump switch located in service center, Water Heater 6-gallon, electronic ignition w/Motoraid & auxiliary auto heater

SLIDEOUT				
Slideout Room bed/wardrobe w/slidoor cover				S
STOREMORE Slideout Room sofa/dinette w/slidoor cover		S	S	S
STOREMORE Slideout Room dinette/refrigerator w/slidoor cover	S			

SAFETY				
Assist Handle exterior, Assist Bar interior, Bumpers front & rear, Detectors/Alarms LP leak, smoke, carbon monoxide, Fire Extinguisher 10 B.C., Ground Fault Interrupter, Brake Light center, high-mount, Seat Belts cab, 3-point, Seat Belts lap (in selected areas), Window escape, Windshield laminated safety glass	S	S	S	S

WARRANTY ^g				
12-month/15,000-mile basic limited warranty, 36-month/36,000-mile warranty on structure, ^h 10-year limited parts & labor warranty on roof skin	S	S	S	S

- a Measurements are based on the most recent information available. See your dealer for specifications.
- b The height of each model is based on the curb weight of a typically equipped unit on the standard chassis. The actual height of your vehicle may vary by as much as 2" depending on chassis or equipment variations.
- c Sightseer floorplans feature a wide-body design—over 96." In making your purchase decision, you should be aware that some states restrict access on some or all state roads to 96" in body width. Before making your purchase decision, you should confirm the road usage laws in the states of interest to you.
- d Your motor home's load capacity is designated by weight, not by volume, so you cannot necessarily use all available space when loading your motor home.

- e Capacities shown are tank manufacturer's listed water capacity (W.C.). Actual filled LP capacity is 80% of listing due to overfilling prevention device on tank.
 - f Actual towing capacity is dependent on your particular loading and towing circumstances, which includes the GVWR, GAWR and GCWR, as well as adequate trailer brakes. Please refer to your vehicle's operator's manual for further towing information.
 - g See separate chassis warranty details provided in owner's packet.
 - h See your dealer for complete warranty information.
- Winnebago Industries' continuing program of product improvement makes specifications, equipment, model availability and prices subject to change without notice. Comparisons to other motor homes are based on the most recent information available.



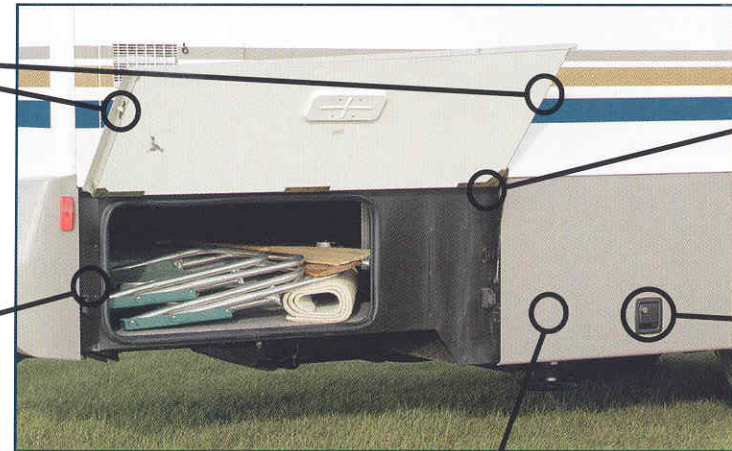
Getting your stuff out of a storage compartment is a breeze. Here's why:

More and better storage.
The StoreMore slideout system is a Winnebago Industries original and is still the industry's premium slideout. StoreMore allows exterior compartments to extend along with the slideout, thus making it easier to retrieve stored items. Its extra-large compartments easily accommodate oversized and odd-shaped items. The StoreMore slideout system on the Sightseer uses the first electric slide, to meet our stringent quality and performance standards. It features powerful, reliable, dual-ram, dual-motor technology with electronic synchronization for improved room movement, better sealing and built-in diagnostics for easier service.

Dual latching mechanisms latch at both ends of the door, providing secure closure and better seal strength.

Advanced seal design helps keep the elements out.

Lights, so you can easily see and identify stowed items.



Gas struts provide easy opening and keep doors open, too.

Single-paddle latches enable one-handed operation.

Compartment doors are lightweight, but fully insulated and seamless for maximum strength and durability.



Rain, rain go away.
Sightseer's built-in rain gutter channels water to the front and rear of the coach, away from windows, doors—and you!



Tow it.
With a 5,000-lb. drawbar and 350-lb. vertical tongue weight capacity, Sightseer's standard hitch gives you plenty of towing ability.[†]



Take it outside.
Sightseer can be equipped with the available exterior entertainment center that includes AM/FM stereo with antenna, CD player, 12-volt DC receptacle, TV jack, 110-volt outlet, speakers and a removable table.

Not all motor homes are created equal.

As you take a closer look, you'll see that there is much more to the Winnebago Sightseer than a long list of standard features and compelling floorplans. Beneath it all you'll find a SuperStructure® foundation of strength and durability, and Winnebago Industries' recognized service and warranty support.



We are committed to service.

We back our motor homes with the best after-the-sale service in the industry.

- 12-month/15,000-mile basic limited warranty
- 36-month/36,000-mile warranty on structure
- Standard 10-year limited parts-and-labor roof skin warranty
- Complimentary 24-hour Roadside Assistance Program
- TripSaver Fast Track Parts. TripSaver guarantees that in-stock warranty parts ship directly to your dealer within 24 hours
- Nationwide dealer service network



Certified quality.

Recreation Vehicle Dealer Association members annually rate RV manufacturers on the quality of their products, and on their sales and service support. Winnebago Industries has achieved the coveted Quality Circle Award every year since its inception, the only major motor home manufacturer to do so.

Learn more about what sets Winnebago Industries apart.

Ask your dealer for this guide. It will help you learn what makes Winnebago Industries motor homes distinctly superior to other brands.



Warning: Joining WIT has been known to cause excessive fun.

Winnebago-Itasca Travelers (WIT) is a club for owners of Winnebago Industries motor homes. WIT is a great way to meet people and offers you:

- Caravans and rallies
- Local and state group activities
- Benefits for RVers



WINNEBAGO Built proudly by
WINNEBAGO
INDUSTRIES

© 2003 Winnebago Industries, Inc., Forest City, IA 50436. Printed in USA.

Seat belts are your most important hookup. Always buckle up.

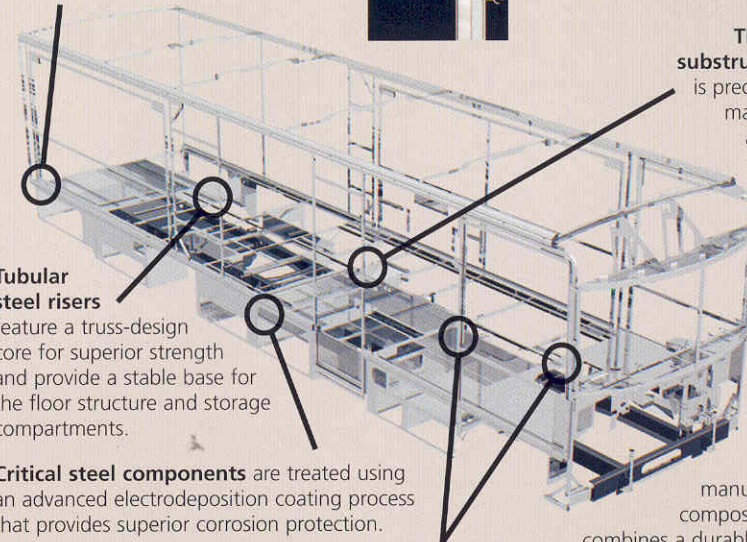
NYSE listing: WGO

Visit us at www.winnebagoind.com

SUPER STRUCTURE

is the term given to Winnebago Industries' structural motor home design and construction. Rather than a single component, it is the culmination of design integration that incorporates steel and aluminum substructures; welded tubular steel floor risers; interlocking joint technology; and Thermo-Panel® floor, roof and sidewalls to form a high-strength, durable vehicle body.

Interlocking joint construction utilizes advanced extruded aluminum structural components to create integrated floor-to-sidewall and sidewall-to-roof joints. This design effectively distributes the weight of the walls and roof, making a stronger and more durable body than competitor designs that rely on screws to carry the weight.



Tubular steel risers

feature a truss-design core for superior strength and provide a stable base for the floor structure and storage compartments.

Critical steel components are treated using an advanced electrodeposition coating process that provides superior corrosion protection.

The all-steel cab features integral A and B pillars for added strength and stability. Steel also separates the occupants from the engine compartment. Believe it or not, less advanced designs actually use wood in this critical application.

Windshields are mounted in steel with non-hardening sealants for superior strength, safety and durability. Some manufacturers actually use a rubber gasket to hold the windshield to a fiberglass cap.

The foundation substructure

assembly is precision-aligned to maximize strength and cross-coach support as well as durability.

The sidewalls

are the result of Winnebago Industries invention and perfection of Thermo-Panel manufacturing. Their composite construction

combines a durable exterior panel with welded aluminum support substructures. The substructures are embedded in a high-density block foam insulation core to create a strong, durable, yet lightweight sidewall.



One-year-old competitor's rubber roof



One-year-old Winnebago Industries fiberglass roof

Built to a higher standard.

Sightseer features a crowned, one-piece fiberglass roof skin backed with a 10-year limited parts-and-labor roof skin warranty. Fiberglass offers superior strength, attractiveness and durability over rubber roofs found on many competitive models. Over time, rubber roofs are susceptible to chalking, streaking and degradation, and have less puncture and tear resistance than fiberglass.