

2013 Sightseer



Click to Navigate

Overview	Lounge	Dining	Cab	SuperStructure	Interior Décor	Specifications	Warranty
Features	Galley	Bedroom Bath	Exterior	Floorplans	Graphics & Paint	WIT Club	



On the cover: 33C Scarlet Full-Body Paint

33C Mercury with Forest Cherry Cabinetry

Are You Ready for Class A Living?

The 2013 Winnebago Sightseer® makes it easy to say yes to the Class A lifestyle. Four floorplans, each built to Winnebago Industries'® legendary quality standards, offer value and features you would not expect at such a friendly price. These features include premium Corian® galley countertops, MCD American Duo® roller shades and soft Ultraleather™ cab seats. Choose the 36V for an exclusive sectional sofa that expands when the slideout is extended or go with the 30A for a double slideout design that incorporates a U-shaped sectional dinette and a mid-coach 42" LCD TV. The new 35G features an extendable sectional sofa/sleeper and a movable drop-leaf dining table. The 2013 Winnebago Sightseer has arrived in style. All that's left is for you to say yes.

Why Sightseer?


- Four exciting multi-slideout floorplans
- Corian galley countertops
- Swivel Ultraleather cab seats
- Powered patio awning
- Stereo system with DVD player
- Extendable sectional sofa (36V)
- MCD American Duo solar/blackout roller shades
- Extendable sectional U-shaped dinette (30A)
- Leveling jacks with 3-position controls
- Fiberglass roof



Recognized Quality The RV Dealers Association bestows its annual Quality Circle Award based on dealer ratings to the manufacturers that provide exceptional products, service and support. Only one manufacturer has received this honor for sixteen consecutive years: Winnebago Industries.®

Best in Class

See how Winnebago Industries takes motor home design and function to the next level, and why we've earned the right to be called the Most Recognized Name in Motor Homes.®

 Click on this icon throughout the brochure to link to more information on the web.



Rest and Relax The available *Comfort Sofa Sleeper* quickly converts from a sofa into a comfortable bed that features a self-inflating mattress and pump that automatically reads mattress pressure to maintain your perfect setting (33C).



Crank It Up The *Cab Stereo System* lets you listen to AM/FM, CDs and your MP3 player, plus it has a DVD player that connects to every TV in the coach.

 GoWinnebago.com



Workstation The *Dash Workstation* is the perfect place to plan your trip.



Night and Day The smoothly retracting *MCD American Duo® Solar/Blackout Roller Shades* let you control your light and privacy—no matter the time of day.



Total Control Press a button and the *MCD American Duo Front Shade* with solar and blackout shades drops partway down to act as a sunvisor or all the way down to protect your privacy.



Recline Kick back and relax in the available *Ultraleather Euro Recliner* with built-in footrest. The hoop base lets you move it to your favorite spot when parked.



Power Protector The *OnePlace® Systems Center* positions controls in an easy-to-access location and includes the *PowerLine® Energy Management System*, which minimizes tripped campground circuits during periods of heavy usage.



33C Mercury with Forest Cherry Cabinetry

The floorplan variety of the Sightseer presents several choices for relaxation, including the new 35G with a movable drop-leaf table, the 36V with extendable sectional sofa, the 30A with extendable U-shaped dinette sectional and the 33C, shown above, featuring an optional dining table that extends to comfortably seat four. When you settle in, wind down by watching movies on the large LCD TV, which is connected to the DVD stereo system in the cab.

Corian solid-surface countertops and matching sink covers provide an elegant starting point for meal preparation in a complete galley with a microwave, three-burner range top and an abundance of cabinetry. Upgrade to the microwave/convection oven to increase your cooking options. The two-door or available four-door refrigerator/freezer provide optimal storage so you can stock up for multiple meals on the road. There's no limit to the culinary delights you can create in your Sightseer.



33C Galley - Countertop Extended



Available Four-Door Refrigerator (NA 30A)



Full-Extension Drawer Slides



33C Pantry



BenchMark Full-Comfort Dinette

The Sightseer 33C and 36V come standard with the BenchMark® full-comfort dinette featuring premium innerspring seating that flips up to access storage compartments. At night, it easily converts into a cozy sleeping space. The 33C also offers an option for an extendable dining table and buffet that includes a retractable 40" LCD TV.



33C Available Dining Table/Buffer



33C Bedroom

Drift off to sleep dreaming of your next adventure in your choice of a queen or king (NA 30A) bed. The queen bed lifts up to reveal a cavernous storage compartment. The 26" LCD TV is DVD ready so you can watch movies playing on the coach DVD system (TV is standard on 35G, available on 30A, 33C, 36V).



33C Wardrobe



33C Bathroom



Underbed Storage



Dash

You will love driving your Sightseer, thanks to a six-way power Ultraleather driver seat, a rearview monitor, available sideview camera (standard on 35G) and easy-to-read controls. Your co-pilot will enjoy the ride, too, with map lights and a dash workstation. Both cab seats swivel to become an integral part of the living area.

You'll want to spend time outdoors, especially when you add the exterior entertainment center with a 32" LCD TV. Lawn chairs will be easy to access from the StoreMore® storage compartments on the 33C that actually extend with the slideroom. The Sightseer has single-paddle latches that provide easy one-handed operation of compartment doors. A color-coded service center with wash station makes hookups quick and easy.



Available Exterior Entertainment Center



StoreMore Storage Compartments



Single-Paddle Latch



Exterior Service Center

Fiberglass Roof The crowned, one-piece fiberglass roof is backed by a 10-year parts-and-labor roof skin warranty.

Rubber Can't Cut It Rubber roofs used by competitors can streak and degrade over time.

Thermo-Panel® Sidewalls By layering fiberglass and high-density block foam insulation with welded aluminum support structures, we create some of the industry's strongest, most durable and lightweight sidewalls.

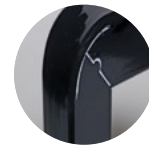
E-Coating An electrodeposition coating helps protect critical steel components.

Embedded Steel Metal substructures embedded into the sidewall provide solid attachment points to keep cabinets and appliances mounted securely in place.

Solid Framework Aluminum extruded in our own facility to our exacting standards creates an extremely strong and solid structural framework.

Laser-Cut Tubing

Precision laser cutters create precise joints in structural steel that are stronger and require less welding.



Interlocking Joints

Specially engineered interlocking joints connect the floor, sidewalls and roof where competitors often rely on simple screws to bear the weight.



SUPER STRUCTURE

BUILT TO LAST

Every coach—from our smallest Class C to our largest diesel pusher model—is built to Winnebago Industries® legendary SuperStructure construction standards. It's a process developed and refined over more than 50 years of building some of the strongest, most durable coaches in the industry.

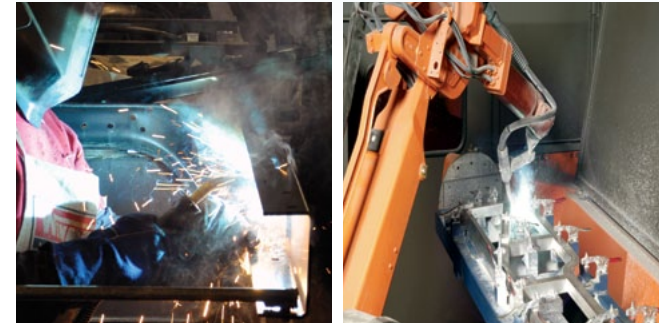
TESTING Before rolling out of our factories, every coach undergoes an extensive 113-point inspection. Each coach also passes a high-pressure water test that simulates rain at a rate of 50-inches per hour to check for leaks. During the design process, computer simulations, our physical testing center and rigorous test track ensure each model is built to last.



DETAILS At Winnebago Industries, we treat the features you can't see with the same care as the ones you can. Look in the access panels of some of our competitors' coaches and you'll see loose insulation and wires haphazardly strewn about. Winnebago Industries maintains a clean fit and finish throughout so your coach will last for the long haul.



BUILT IN-HOUSE We extrude our own aluminum. We rotocast our own plastic components. In fact, we manufacture most of our own parts so they are designed to fit the space, rather than fitting the space to an awkward off-the-shelf component size.



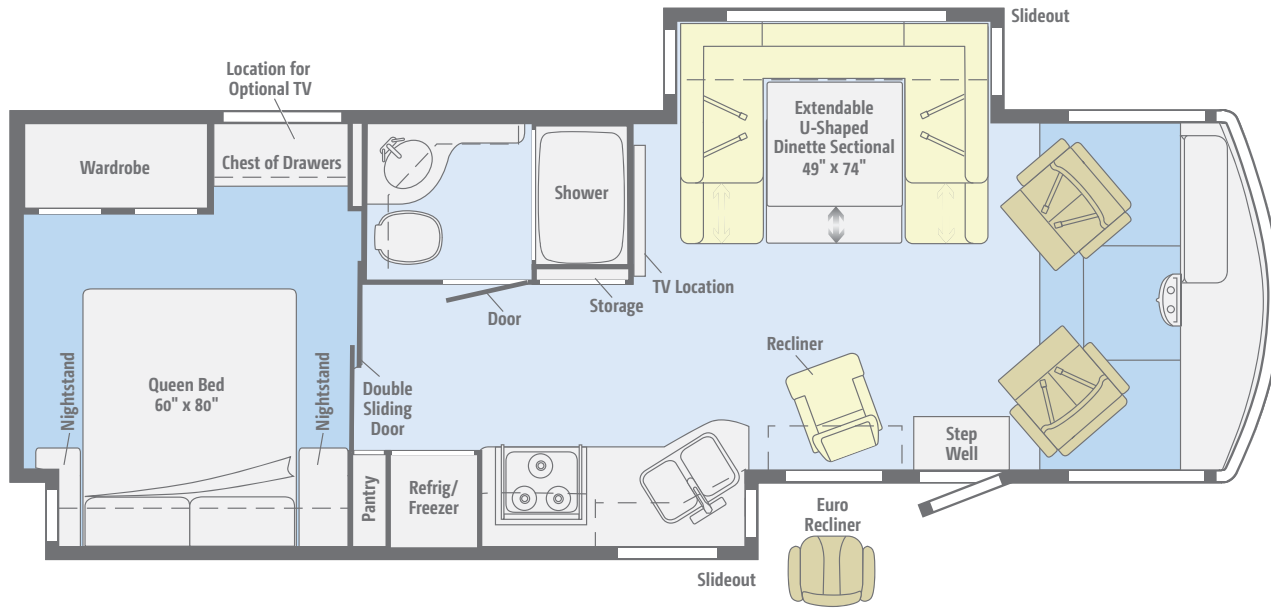
**SUPER
STRUCTURE**
BUILT TO LAST

Visit BetterBuiltRVs.com to gain real insight into what goes into a Winnebago Industries motor home.

TAKE A TOUR We're proud of our processes, state-of-the-art facilities and the people who make Winnebago Industries number one. We invite you to visit our complex in Forest City, Iowa, for a first-hand look at the dedication and technology behind every motor home we build.



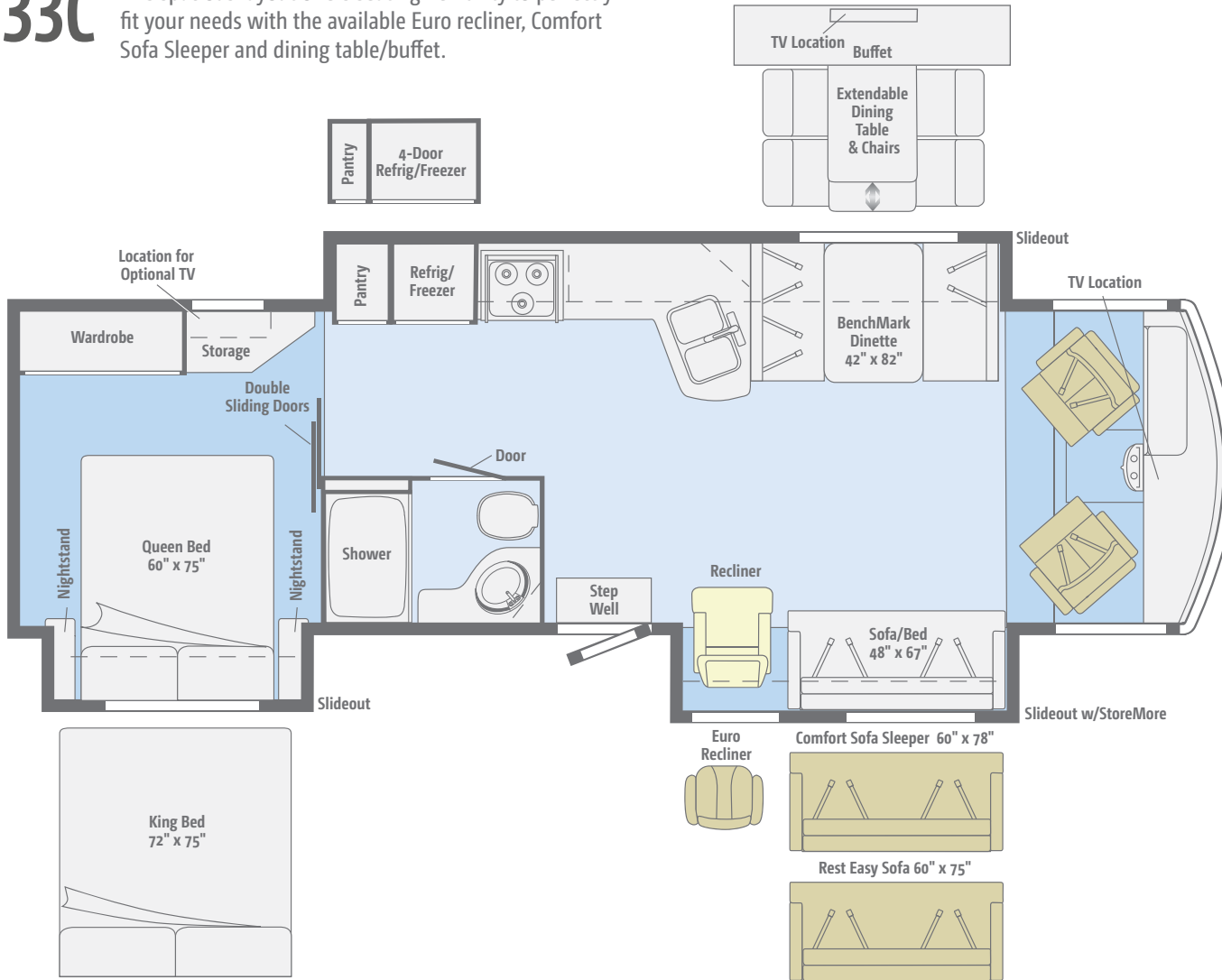
30A A galley/bedroom slideout and the U-shaped dinette combine to make an incredibly spacious interior in this campsite-friendly floorplan.


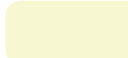

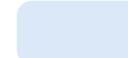


Standard Ultraleather	Optional Ultraleather	Carpet	Vinyl

Dimensions shown are for sleeping space only and may vary due to styling differences. Dashed lines denote overhead storage areas. Floorplans and specifications are also available online at GoWinnebago.com.

33C This spacious layout offers seating flexibility to perfectly fit your needs with the available Euro recliner, Comfort Sofa Sleeper and dining table/buffet.



			
Standard Ultraleather	Optional Ultraleather	Carpet	Vinyl

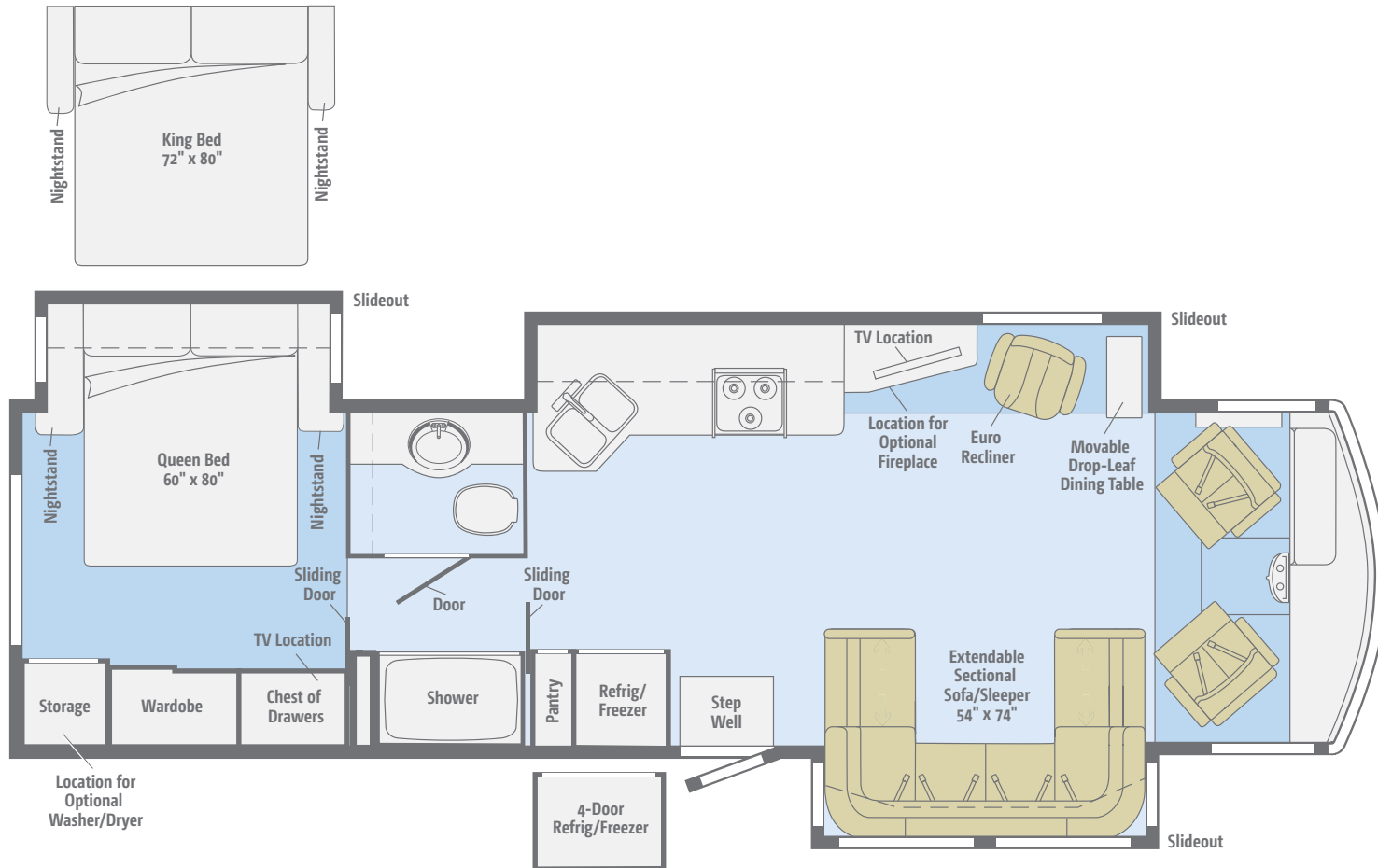
Dimensions shown are for sleeping space only and may vary due to styling differences. Dashed lines denote overhead storage areas. Floorplans and specifications are also available online at GoWinnebago.com.

Available January 2013

NEW

35G

Comfortable, spacious and innovative, the extendable sectional sofa/sleeper with movable drop-leaf dining table is the focal point of this triple-slideout floorplan.



Standard Ultraleather	Optional Ultraleather	Carpet	Vinyl

Dimensions shown are for sleeping space only and may vary due to styling differences. Dashed lines denote overhead storage areas. Floorplans and specifications are also available online at GoWinnebago.com.

36V The extendable sectional sofa, available king bed and wide double slideouts let you live large in the 36V.



Standard Ultraleather	Optional Ultraleather	Carpet	Vinyl

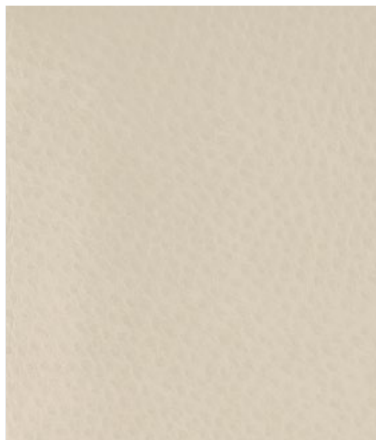
Dimensions shown are for sleeping space only and may vary due to styling differences. Dashed lines denote overhead storage areas. Floorplans and specifications are also available online at GoWinnebago.com.

Choose from three fabric collections and three cabinet woods with Satin Nickel hardware and hidden hinges.

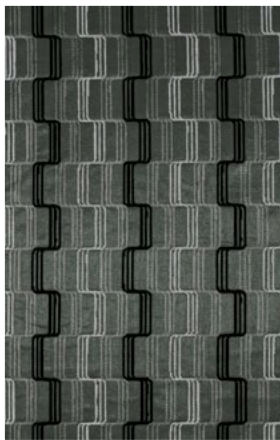
Arctic



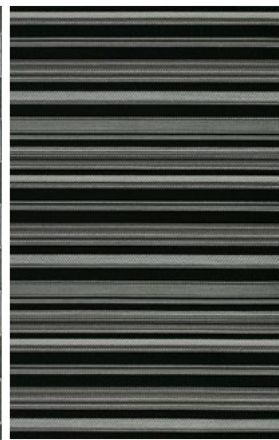
Main



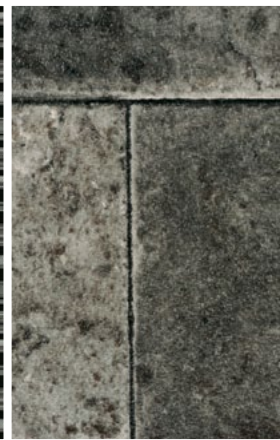
Stucco Ultraleather



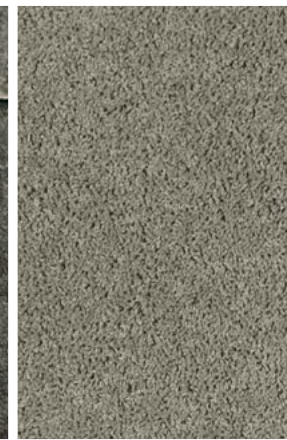
Accent



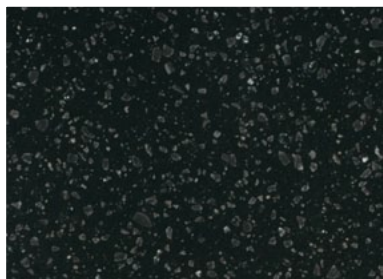
Bedsread



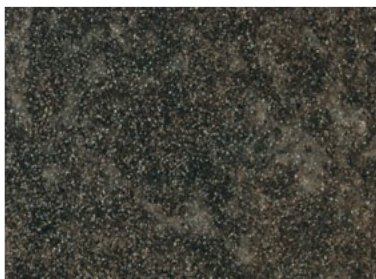
Vinyl



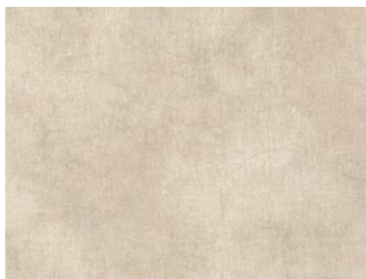
Carpet



Night Sky Corian Countertop Galley



Mineral Geode Omnova Countertop Bath



Driftwood Wall Board



Honey Cherry



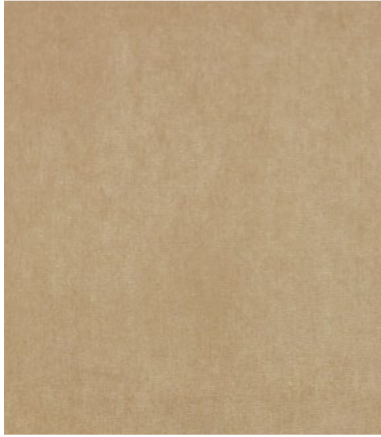
Forest Cherry



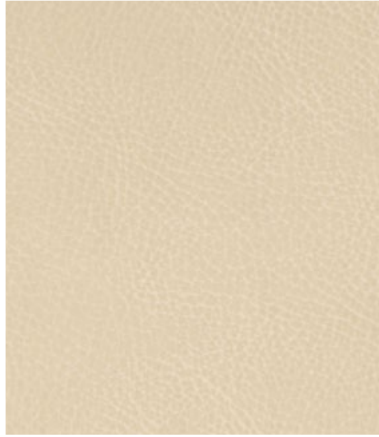
Coffee-Glazed Vienna Maple

Choose from three fabric collections and three cabinet woods with Satin Nickel hardware and hidden hinges.

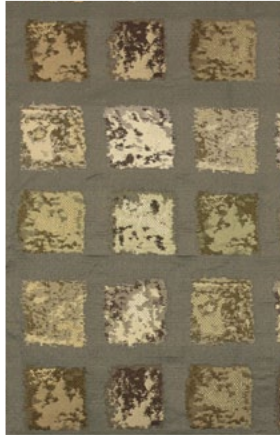
Mercury



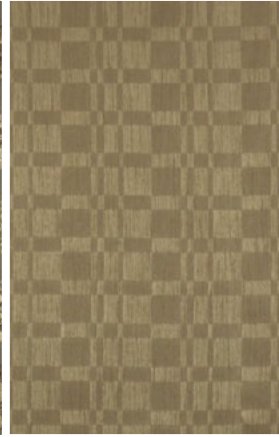
Main



Manilla Ultraleather



Accent



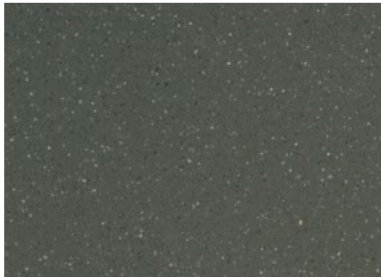
Bedsread



Vinyl



Carpet



Medea Corian Countertop
Galley



Travertine Weathered Omnova
Countertop - Bath



Mineral Wall Board



Honey Cherry



Forest Cherry



Coffee-Glazed
Vienna Maple

Choose from three fabric collections and three cabinet woods with Satin Nickel hardware and hidden hinges.

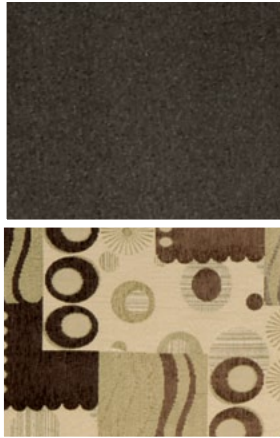
Westwood



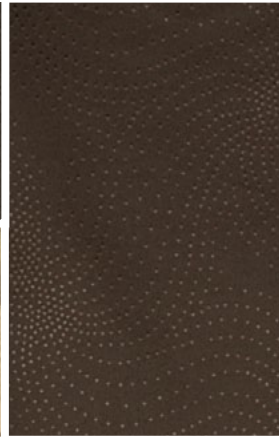
Main



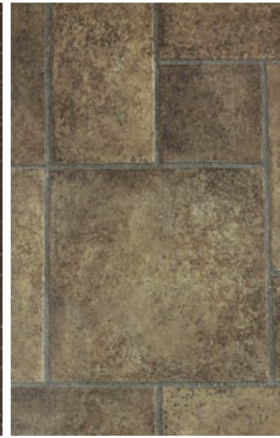
Surfside Ultraleather



Accent



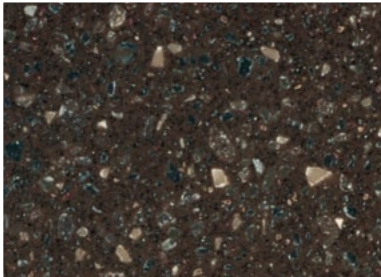
Bedsread



Vinyl



Carpet



Cocoa Brown Corian Countertop Galley



Laguna Pebble Omnova Countertop Bath



Birchwood Pecan Wall Board



Honey Cherry



Forest Cherry



Coffee-Glazed Vienna Maple

Choose from deluxe graphics or customize your look with one of four full-body paint options.



Sandstone
DELUXE GRAPHICS



Brilliant Silver
DELUXE GRAPHICS

Choose from deluxe graphics or customize your look with one of four full-body paint options.



Light Khaki
FULL-BODY PAINT



Silver Mica
FULL-BODY PAINT



Hazelnut
FULL-BODY PAINT



Scarlet
FULL-BODY PAINT

Weights & Measures

	30A	33C	35G	36V
Length	31'1"	34'7"	36'5"	37'8"
Exterior Height ¹	12'6"	12'5"	12'6"	12'6"
Exterior Width ²	8'5.5"	8'5.5"	8'5.5"	8'5.5"
Exterior Storage ³ (cu. ft.)	90.5	104.0	115.8	180.4
Awning Length	15'6'	19'	17'	20'
Interior Height	6'8"	6'8"	6'8"	6'8"
Interior Width	8'0.5"	8'0.5"	8'0.5"	8'0.5"
Freshwater Capacity w/Heater ⁴ (gal.)	86	79	90	86
Holding Tank Capacity - Black/Gray ⁴ (gal.)	38/53	39/60	38/50	38/50
LP Capacity ⁵ (gal.)	18	18	18	18
Fuel Capacity (gal.)	80	80	80	80
GCWR ⁶ (lbs.)	26,000	26,000	26,000	26,000
GVWR (lbs.)	22,000	22,000	22,000	22,000
GAWR - Front (lbs.)	8,000	8,000	8,000	8,000
GAWR - Rear (lbs.)	15,000	15,000	15,000	15,000
Wheelbase	190"	220"	228"	242"

Chassis

Ford® F53 Chassis

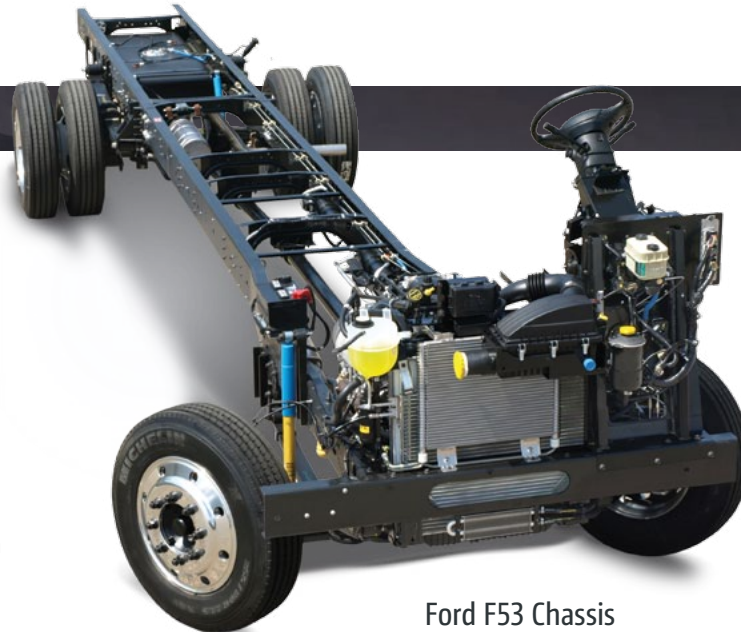
- 362-hp 6.8L Super Duty V10 SEFI Triton® engine
- TorqShift™ 5-speed automatic transmission w/tow haul
- Hydro-Max™ power brakes
- 4-wheel ABS
- 175-amp. alternator

7-pin trailer wiring

Trailer Hitch⁶ 5,000-lb. drawbar/500-lb. maximum vertical tongue weight

Automatic hydraulic leveling jacks w/3-position controls

Stylized aluminum wheels w/22.5" tires



Ford F53 Chassis

Cab Conveniences

Cab Seats adjustable armrests, lumbar support and multi-adjustable slide/recline/swivel

6-way power driver seat

Stereo System AM/FM, CD/DVD player, alarm clock, front input jack and remote

Chassis/house battery radio power switch

Power-assist steering w/tilt wheel

12-volt powerpoint

Cruise control

Power mirrors w/defrost

Map lights

C.B. wire prep

MCD American Duo® powered front shade w/solar and blackout shades, privacy curtains for driver and passenger windows

Rearview color monitor system w/one-way audio

Sideview camera system (35G)

Defroster fans (35G)

Dash workstation

OPTIONAL EQUIPMENT

Passenger seat w/footrest

Sideview color camera monitor system (30A, 33C, 36V)

Defroster fans (30A, 33C, 36V)

Interior

32" LCD TV, front overhead (33C)

42" LCD TV, mid-coach (36V)

42" LCD TV mounted to a locking extendable slide system, mid-coach (30A)

Amplified digital TV antenna system

Entertainment center w/46" LCD TV, mid-coach (35G)

Incandescent ceiling lights (30A, 33C, 36V)

LED ceiling lights (35G)

Satellite system ready (lounge and bedroom)

Soft vinyl ceiling

MCD American Duo solar/blackout roller shades (lounge, dinette and bedroom)

Mini blinds (galley) (30A, 36V)

OnePlace® systems center

Tinted, dual-glazed, thermo-insulated windows

Powered ventilator fan (bedroom) (35G)

Powered ventilator fan (lounge)

Powered roof vent (bath)

Key-activated slideroom master lock switch

OPTIONAL EQUIPMENT

Stackable washer/dryer (35G)

Electric fireplace (35G)

32" LCD TV, front overhead cabinet (36V)

Dining table/buffet/chairs w/retractable 40" LCD TV (33C)

Vinyl floor covering (cab area and slideouts carpeted)

Satellite dish antenna w/remote extender

Galley

Corian® solid-surface countertop, backsplash and sink covers

2-door refrigerator/freezer

Microwave oven w/vented range hood (30A, 33C, 36V)

Microwave/convection oven w/vented range hood (35G)

3-burner range top w/cover and storage below

OPTIONAL EQUIPMENT

Microwave/convection oven w/vented range hood (30A, 33C, 36V)

Large-capacity 2-door refrigerator/freezer w/ice maker and water filter (30A)

4-door refrigerator/freezer w/ice maker (33C, 35G, 36V)

3-burner range w/oven

Bath

Thermo-formed laminated countertop

Flexible showerhead

Sliding textured glass shower door

Skylight

Aqua Magic® V toilet (30A, 33C, 36V)

Porcelain toilet (35G)

Bedroom

Queen bed w/innerspring mattress (30A, 33C, 36V)

Queen powered bed w/Ideal Rest® Natural Reserve digital comfort control mattress w/remotes (35G)

Bedspread, pillows and shams

26" LCD TV, DVD cable ready (35G)

OPTIONAL EQUIPMENT

King bed w/innerspring mattress and underbed storage (33C, 36V)

Powered king bed w/Ideal Rest Natural Reserve digital comfort control mattress w/remotes (35G)

26" LCD TV, DVD cable ready (30A, 33C, 36V)

Exterior

Automatic entrance door steps

Porch light

Lighted storage compartments

Premium smooth high-gloss skin

KeyOne™ lock system

Front mud flaps

Ladder

Powered patio awning

OPTIONAL EQUIPMENT

Additional powered patio awning, above entrance door (30A)

Entertainment Center 32" LCD TV, AM/FM stereo, DVD player, remote

Lower front protective mask (w/full-body paint)

Heating & Cooling System

Two high-efficiency roof air conditioners w/energy management system

35,000 BTU low-profile ducted furnace (30A, 33C)

40,000 BTU low-profile ducted furnace (35G, 36V)

OPTIONAL EQUIPMENT

Two high-efficiency air conditioners w/heat pumps

Electrical System

AC/DC electrical distribution system, 55-amp. converter/charger

50-amp. power cord

5,500-watt Cummins Onan® Marquis Gold™ gas generator

Generator/shoreline automatic changeover switch

Two deep-cycle, Group 31 batteries

Chassis and coach battery disconnect systems

PowerLine® Energy Management System

Automatic dual-battery charge control

Auxiliary start circuit

Exterior antenna jack and AC duplex receptacle

1,000-watt inverter

Plumbing System

Service Center color-coded labels, cable TV input, pressurized city water hookup w/diverter valve, 3" drainage valve, portable satellite dish hookup, power cord, 10' sewer hose, QuickPort® exterior wash station w/lighted pump switch

Permanent-mount LP tank

On-demand water pump

TrueLevel™ holding-tank monitoring system

Winterization Package water heater bypass valve and siphon tube

Heated holding-tank compartment

6-gallon 110 V/LP water heater w/motoraid and auto heater (30A, 33C, 36V)

10-gallon 110 V/LP water heater w/motoraid and auto heater (35G)

Holding tank flushing system (35G)

LPG accessory connection (patio area) (35G)

Safety

Seat belts

Child seat tether anchor in forward-facing dinette seat (30A, 36V)

LP, smoke and carbon monoxide detectors

10 BC fire extinguisher

Ground fault interrupter

High-mount brake lamp

Warranty⁷

12-month/15,000-mile basic warranty⁸

36-month/36,000-mile limited warranty on structure⁸

10-year limited parts and labor warranty on roof skin⁸

- The height of each model is measured to the top of the tallest standard feature and is based on the curb weight of a typically equipped unit. The actual height of your vehicle may vary by several inches depending on chassis or equipment variations. Please contact your dealer for further information.
- Sightseer floorplans feature a wide-body design—over 96" in making your purchase decision, you should be aware that some states restrict access on some or all state roads to 96" in body width. Before making your purchase decision, you should confirm the road usage laws in the states of interest to you.
- The load capacity of your motorhome is designated by weight, not by volume, so you cannot necessarily use all available space when loading your motorhome.
- Capacities are based on measurements prior to tank installation. Slight capacity variations can result due to installation applications.
- Capacities shown are tank manufacturer's listed water capacity (W.C.). Actual filled LP capacity is 80% of listing due to overfilling prevention device on tank.
- Actual towing capacity is dependent on your particular loading and towing circumstances, which includes the GVWR, GAWR, and GCWR, as well as adequate trailer brakes. Please refer to the Operator's Manual of your vehicle for further towing information.
- See separate chassis warranty.
- See your dealer for complete warranty information.

NA Not Available

Not all items available in combination. See dealer for details.

Winnebago Industries® continuing program of product improvement makes specifications, equipment, model availability, and prices subject to change without notice. Comparisons to other motorhomes are based on the most recent information available at printing.

GoWinnebago.com Has Gone Mobile

Learn more about the 2013 Sightseer on your computer, smartphone or tablet. Visit GoWinnebago.com/Sightseer for the complete Sightseer experience.



PREFERRED CARE PROGRAM

We back our motor homes with best-in-class support both before *and* after the sale:

- 12-month/15,000-mile basic limited warranty
- 36-month/36,000-mile warranty on structure
- 10-year standard limited parts-and-labor roof skin warranty
- Complimentary 24-hour roadside assistance program



TRIPSaver
FAST TRACK PARTS

- TripSaver® Fast Track Parts guarantees that in-stock warranty parts ship directly to your dealer within 24 hours
- National dealer service network



Premium
ROADSIDE ASSISTANCE

Join the Club, Join the Fun

As a Winnebago motor home owner, you are invited to join the WIT Club. It's a great way to take full advantage of your new coach and meet fun-loving WIT Club members from across the country who make motor home adventures a way of life.



Members enjoy:

- Caravans and rallies
- Newsletters
- Local and state group activities
- RV travel benefits

See more on WITclub.com



Grand National Rally

Each year, thousands of Winnebago Industries motor home owners descend upon Forest City, Iowa, for the Grand National Rally. Rally goers connect with old friends and enjoy concerts, tours, activities and more in a weeklong celebration of the motor home lifestyle. Join us in July for a week you'll never forget.

